

# TIMBERLAND SERVICES

Telephone: (229) 407-0208

wes.shiver@gmail.com

July 17, 2020

Attn: Cameron Morris  
(229) 881-7643  
Weeks Auction Group, Inc.  
2186 Sylvester Highway  
Moultrie, GA 31768

**RE: TIMBER INVENTORY REPORT FOR THE TOM JUDGE FARM LOCATED IN  
LAND LOT 205 OF THE 16<sup>TH</sup> LAND DISTRICT OF WORTH & LAND LOT 236 OF  
THE 16<sup>TH</sup> LAND DISTRICT OF TURNER COUNTY, GEORGIA**

Mrs. Chapman,

Enclosed are the results of the timber cruise that was requested for the +/- 211 timbered acres on the Tom Judge Farm located in Worth & Turner County, Georgia. The cruise was conducted during the month of July 2020.

The merchantable timber on the tract in Worth County labeled in this report as "Tract 4" has a total estimated current value of **\$392,875 or \$3,329/timbered acre**. The merchantable timber on the tract in Turner County labeled in this report as "Tract 2" has a total estimated current value of **\$81,361 or \$875/timbered acre**.

All acreages were estimated from aerial photography incorporated into a GIS mapping computer program.

Timber stumpage values coming from comparable sales in the area and published prices from Timber Mart-South were used in the valuation.

Total volume and value summaries for each timber stand are provided.

If you have any questions, please contact our office at your convenience.

Sincerely,



Wes Shiver  
Georgia Registered Forester #2809

## **General Assumptions and Limiting Conditions**

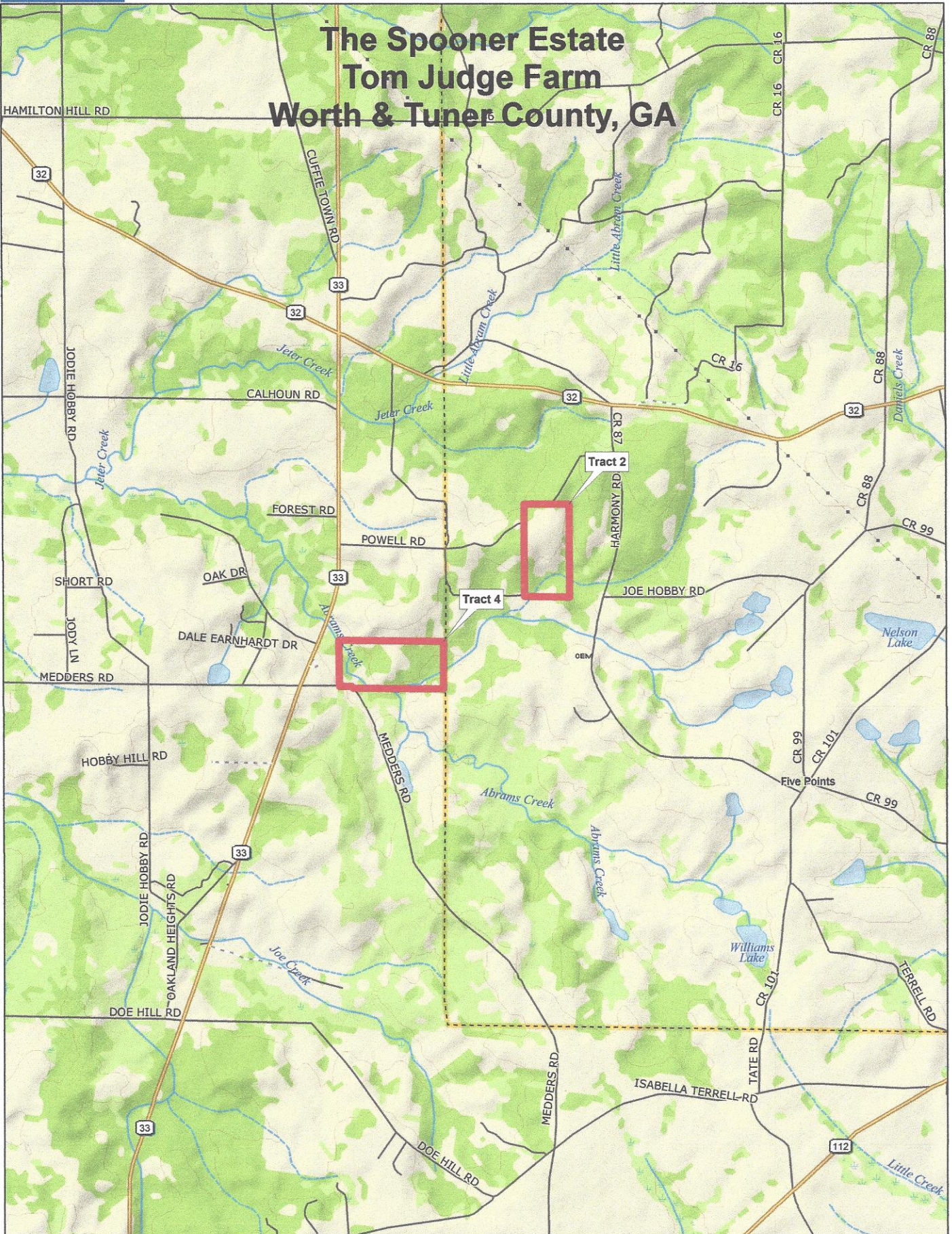
1. The timber appraiser assumes no responsibility for matters of a legal nature affecting the timber appraised or the title thereto, nor does the timber appraiser render any opinion as to the title, which is assumed to be good and marketable. The timber is appraised as though under responsible ownership.
2. Sketches in the report may show approximate dimensions and are included to assist the reader in visualizing the property. The timber appraiser has not made a survey of the property.
3. The timber appraiser is not required to give testimony or appear in court because of having made the appraisal with reference to the property in question.
4. Any distribution of the timber valuation in the report applies only under the existing program of utilization. The valuation of the timber as a pure asset should not be necessarily considered as the contributory value of the timber toward the value of the property in its entirety.
5. Information, estimates and opinions furnished to the timber appraiser, and contained in the report, were obtained from sources considered reliable and believed to be true and correct. However, the timber appraiser can assume no responsibility for the accuracy of such items furnished to the timber appraiser.
6. This report was prepared for the Client's use and the Client's sole discretion within the framework of the function stated in the report and its use for any other purpose is beyond the scope contemplated in the appraisal.
7. Where the timber appraisal conclusions are subject to satisfactory completion, repairs, or alterations, the appraisal report and value conclusion are contingent upon completion of the improvements in a workmanlike manner consistent with the plans, specification and/or scope contemplated in the appraisal.
8. Neither all nor any part of the contents of this report, especially any conclusions as to value, the identity of the appraiser or the firm with which he is connected, shall be disseminated to the public through advertising, public relations, news, sales, or other media without the prior written consent and approval of the author.
9. Acceptance of the report by the Clients constitutes acceptance of all assumptions and limiting conditions contained in the report.

## **Extraordinary Assumptions**

The estimates of timber volume for the subject area were determined from a timber inventory conducted by Timberland Services of Southwest GA LLC. A timber inventory is a small statistical sample of the area and is used to estimate the total volume of timber for the area. Timber volumes can vary by the timber product specifications used for an inventory. The timber product specifications used for this inventory are considered average for the area but can change or vary depending on utilization and particular specifications of different wood using mills. Timber volumes can also vary based on the utilization or grading skills of timber products by the harvesting (logging) operation. The estimate of timber volume for the subject should not be relied upon for the purpose other than for what it was designed for. Should the Clients or any third party use the timber volume estimates for any other proposes, they do so at their own risk,

and Timberland Services of Southwest GA assumes no responsibility for any injury to the client or any third party resulting from such use.

# The Spooner Estate Tom Judge Farm Worth & Turner County, GA



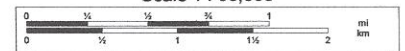
Data use subject to license.

© DeLorme. XMap® 7.

www.delorme.com



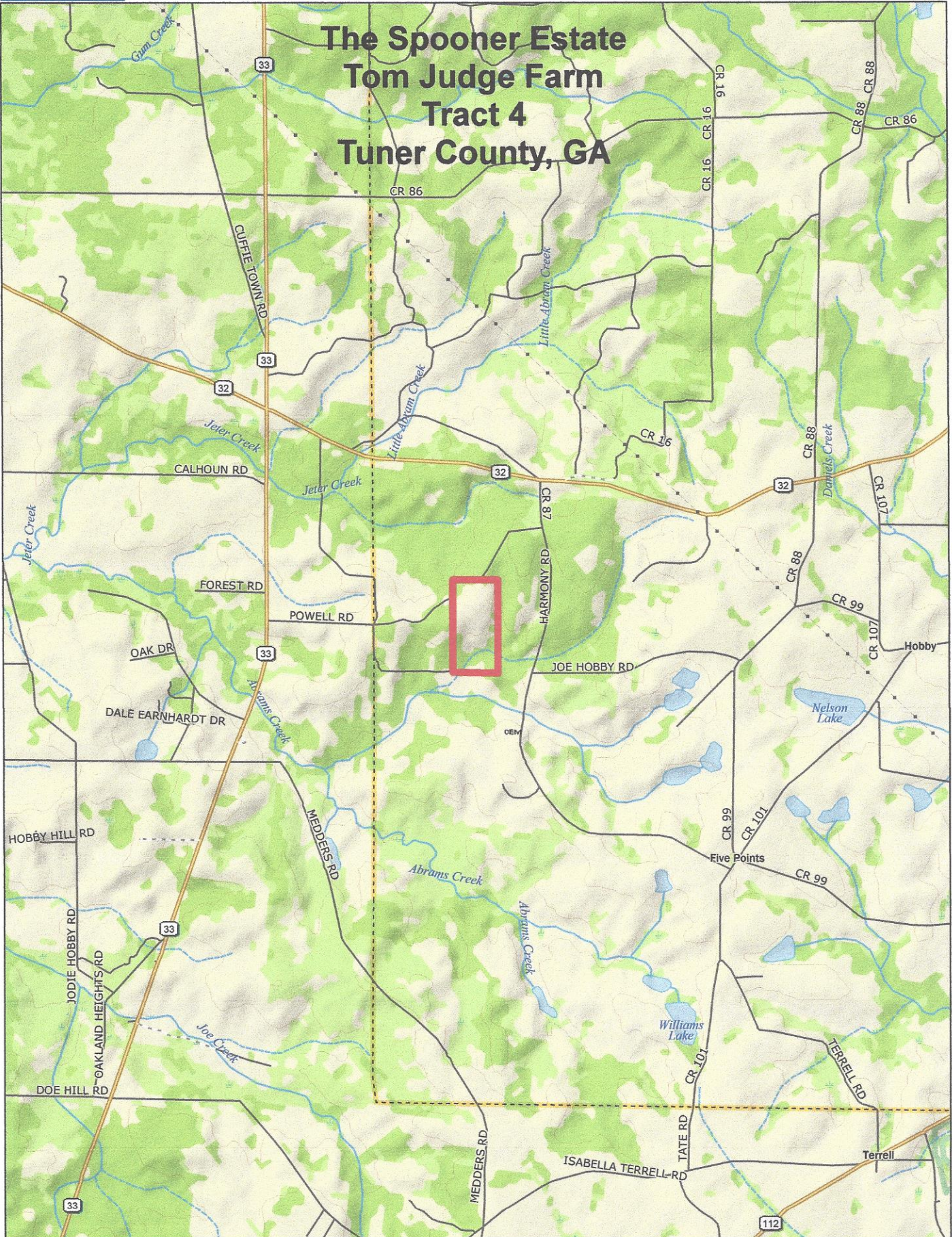
Scale 1 : 50,000



1" = 4,166.7 ft

Data Zoom 12-0

# The Spooner Estate Tom Judge Farm Tract 4 Tuner County, GA



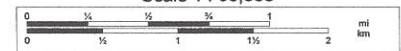
Data use subject to license.

© DeLorme. XMap® 7.

www.delorme.com



Scale 1 : 50,000



1" = 4,166.7 ft

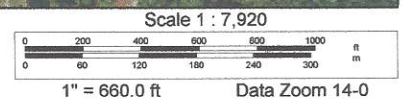
Data Zoom 12-0

# The Spooner Estate Tom Judge Farm Tract 4 Tuner County, GA



**Stand Information & Legend**

-  Planted Slash Pine +/- 41 ac.
-  Planted Longleaf Pine +/- 38 ac.
-  Hardwood Branch +/- 14 ac.
-  Pond
-  Tract Boundary



Number of Stands:	3
# Plots/points:	45
Total Acres:	93
Sawlog Vol Units:	Scrib

Tract Name:	Spooner Tom Judge Tract 2
Location:	Turner County, GA
Report Date:	7/16/2020



Tract Value Summary by Class, Group and Product

Pine ---> Pine Class

Tract Total			
Product	Trees	PW Tons	Saw Tons
Pulpwood	28,920.7	6,939.5	
Chip-n-saw	570.0	13.5	196.9
Sawlog	56.0	24.8	96.1
Top_Pulpwood		38.2	
Group Total	29,546.7	6,977.7	293.0

Per Acre			
BA	Trees	PW Tons	Saw Tons
102.2	311.0	74.6	
2.7	6.1	0.1	2.1
1.2	0.6	0.3	1.0
		0.4	
106.1	317.7	75.0	3.2

Avg. Tree		
Tons/Tree	BF/Tree	Avg DBH
0.2		7.8
0.3	35.3	9.0
1.7	320.1	19.0
0.1		
0.2	1.3	7.8

Value		
\$/Ton	Stand Tot \$	Per Acre \$
\$10.00	\$69,394.58	\$746.18
\$20.00	\$3,938.12	\$42.35
\$30.00	\$2,881.88	\$30.99
\$6.00	\$229.49	\$2.47
\$10.51	\$76,444.08	\$821.98

Pine Class

Tract Total			
Product	Trees	PW Tons	Saw Tons
Class Total	29,546.7	6,977.7	293.0

Per Acre			
BA	Trees	PW Tons	Saw Tons
106.1	317.7	75.0	3.2

Avg. Tree		
Tons/Tree	BF/Tree	Avg DBH
0.2	1.3	7.8

Value		
\$/Ton	Stand Tot \$	Per Acre \$
\$10.51	\$76,444.08	\$821.98

Oak ---> Hardwood Class

Tract Total			
Product	Trees	PW Tons	Saw Tons
Sawlog	28.0	0.0	31.8
Group Total	28.0	0.0	31.8

Per Acre			
BA	Trees	PW Tons	Saw Tons
0.5	0.3	0.0	0.3
0.5	0.3	0.0	0.3

Avg. Tree		
Tons/Tree	BF/Tree	Avg DBH
1.1	174.0	18.0
1.1	174.0	18.0

Value		
\$/Ton	Stand Tot \$	Per Acre \$
\$38.00	\$1,209.93	\$13.01
\$38.00	\$1,209.93	\$13.01

Misc. Hardwood ---> Hardwood Class

Tract Total			
Product	Trees	PW Tons	Saw Tons
Pulpwood	1,092.0	466.1	
Palletwood	28.0	0.0	10.2
Sawlog	28.0	0.0	30.3
Group Total	1,148.0	466.1	40.6

Per Acre			
BA	Trees	PW Tons	Saw Tons
7.1	11.7	5.0	
0.2	0.3	0.0	0.1
0.4	0.3	0.0	0.3
7.7	12.3	5.0	0.4

Avg. Tree		
Tons/Tree	BF/Tree	Avg DBH
0.4		10.5
0.4	51.2	11.0
1.1	182.5	16.0
0.4	5.7	10.7

Value		
\$/Ton	Stand Tot \$	Per Acre \$
\$6.00	\$2,796.32	\$30.07
\$0.08	\$0.79	\$0.01
\$30.00	\$909.76	\$9.78
\$7.32	\$3,706.87	\$39.86

Hardwood Class

Tract Total				
Product	Trees	PW Tons	Saw Tons	MBF
Class Total	1,176.0	466.1	72.4	11.4

Per Acre				
BA	Trees	PW Tons	Saw Tons	BF
8.2	12.6	5.0	0.8	122.7

Avg. Tree		
Tons/Tree	BF/Tree	Avg DBH
0.5	9.7	10.9

Value		
\$/Ton	Stand Tot \$	Per Acre \$
\$9.13	\$4,916.80	\$52.87

**All Species Groups**

Tract Total				
Product	Trees	PW Tons	Saw Tons	MBF
Grand Total	30,722.7	7,443.8	365.4	49.5

Per Acre				
BA	Trees	PW Tons	Saw Tons	BF
114.3	330.4	80.0	3.9	531.7

Avg. Tree		
Tons/Tree	BF/Tree	Avg DBH
0.3	1.6	8.0

Value		
\$/Ton	Stand Tot \$	Per Acre \$
\$10.42	\$81,360.88	\$874.85





Stand Value Summary by Class, Group and Product

Sampling Method:	Plot
BAF / Plot Size:	0.03
Stand Acres:	41.0
Cruiser:	Timberland Services

Tract Name:	Spooner Tom Judge Tract 2
Stand ID:	Planted Slash Pine
Location:	Turner County, GA
Date Cruised:	7/6/2020
Saw Volume Unit	Scrib

Pine ---> Pine Class

Product	Stand Total			MBF
	Trees	PW Tons	Saw Tons	
Pulpwood	17,151.7	3,432.7		
<b>Group Total</b>	17,151.7	3,432.7	0.0	0.0

BA	Trees	Per Acre			BF
		PW Tons	Saw Tons	BF	
120.7	418.3	83.7	83.7	0.0	0.0
120.7	418.3	83.7	0.0	0.0	0.0

Tons/Tree	Avg. Tree		Avg DBH
	BF/Tree		
0.2			7.3
0.2	0.0	0.0	7.3

\$/Ton	Value		Per Acre \$
	Stand Tot \$		
\$10.00	\$34,327.05		\$837.25
\$10.00	\$34,327.05		\$837.25

All Species Groups

Product	Stand Total			MBF
	Trees	PW Tons	Saw Tons	
Pulpwood	17,151.7	3,432.7		
<b>Grand Total</b>	17,151.7	3,432.7	0.0	0.0

BA	Trees	Per Acre			BF
		PW Tons	Saw Tons	BF	
120.7	418.3	83.7	83.7	0.0	0.0
120.7	418.3	83.7	0.0	0.0	0.0

Tons/Tree	Avg. Tree		Avg DBH
	BF/Tree		
0.2			7.3
0.2	0.0	0.0	7.3

\$/Ton	Value		Per Acre \$
	Stand Tot \$		
\$10.00	\$34,327.05		\$837.25
\$10.00	\$34,327.05		\$837.25

### Stand Summary by Class, Group, Product and Dbh

Sampling Method:	Plot
BAF / Plot Size:	0.03
Stand Acres:	41.0
Cruiser:	Timberland Services

Tract Name:	Spooner Tom Judge Tract 2
Stand ID:	Planted Slash Pine
Location:	Turner County, GA
Date Cruised:	7/6/2020
Sawlog Vol Units:	Scrib



### Pine ---> Pine Class

		Stand Total				Per Acre				Avg. Tree			Avg. Heights		
DBH	Trees	PW Tons	Saw Tons	MBF	BA	Trees	PW Tons	Saw Tons	BF	Tons/Tree	BF/Tree	Hs	Hp	Hm	
Submerch	4	34.2			0.07	0.8								35.0	
Repro/Submerch Total	34.2				0.07	0.8								35.0	
Pulpwood															
	5	1,298.3	89.5		4.32	31.7	2.18			0.069			22.4	22.4	
	6	3,006.7	346.9		14.40	73.3	8.46			0.115			27.8	27.8	
	7	6,150.0	1,120.0		40.09	150.0	27.32			0.182			34.4	34.4	
	8	4,920.0	1,243.6		41.89	120.0	30.33			0.253			37.4	37.4	
	9	1,503.3	506.1		16.20	36.7	12.34			0.337			40.2	40.2	
	10	205.0	90.1		2.73	5.0	2.20			0.439			43.5	43.5	
	11	68.3	36.5		1.10	1.7	0.89			0.534			43.5	43.5	
Pulpwood Total	17,151.7	3,432.7			120.72	418.3	83.72			0.200		0.0	33.9	33.9	

		Stand Total				Per Acre				Avg. Tree			Avg. Heights		
DBH	Trees	PW Tons	Saw Tons	MBF	BA	Trees	PW Tons	Saw Tons	BF	Tons/Tree	BF/Tree	Hs	Hp	Hm	
Merch Group Total	17,151.7	3,432.7	0.0	0.0	120.72	418.3	83.72	0.00	0.00	0.200	0.000	0.0	33.9	33.9	

### All Species Groups

		Stand Total				Per Acre				Avg. Tree			Avg. Heights		
DBH	Trees	PW Tons	Saw Tons	MBF	BA	Trees	PW Tons	Saw Tons	BF	Tons/Tree	BF/Tree	Hs	Hp	Hm	
Merch Grand Total	17,151.7	3,432.7	0.0	0.0	120.72	418.3	83.72	0.00	0.00	0.200	0.000	0.0	33.9	33.9	



Stand Value Summary by Class, Group and Product

Sampling Method:	Plot	Tract Name:	Spooner Tom Judge Tract 2
BAF / Plot Size:	0.03	Stand ID:	Planted Longleaf Pine
Stand Acres:	38.0	Location:	Turner County, GA
Cruiser:	Timberland Services	Date Cruised:	7/6/2020
		Saw Volume Unit	Scrib

Pine ----> Pine Class

Product	Stand Total			Per Acre			Avg. Tree			Value				
	Trees	PW Tons	MBF	BA	Trees	PW Tons	Saw Tons	BF	Tons/Tree	BF/Tree	Avg DBH	\$/Ton	Stand Tot \$	Per Acre \$
Pulpwood	11,685.0	3,498.0		119.5	307.5	92.1			0.3		8.4	\$10.00	\$34,979.83	\$920.52
Chip-n-saw	570.0	13.5	20.1	6.6	15.0	0.4	5.2	529.2	0.3	35.3	9.0	\$20.00	\$3,938.12	\$103.63
Top_Pulpwood		13.5				0.4			0.0			\$6.00	\$80.71	\$2.12
<b>Group Total</b>	<b>12,255.0</b>	<b>3,511.4</b>	<b>20.1</b>	<b>126.1</b>	<b>322.5</b>	<b>92.4</b>	<b>5.2</b>	<b>529.2</b>	<b>0.3</b>	<b>1.6</b>	<b>8.5</b>	<b>\$10.52</b>	<b>\$38,998.66</b>	<b>\$1,026.28</b>

All Species Groups

Product	Stand Total			Per Acre			Avg. Tree			Value				
	Trees	PW Tons	MBF	BA	Trees	PW Tons	Saw Tons	BF	Tons/Tree	BF/Tree	Avg DBH	\$/Ton	Stand Tot \$	Per Acre \$
Pulpwood	11,685.0	3,498.0		119.5	307.5	92.1			0.3		8.4	\$10.00	\$34,979.83	\$920.52
Chip-n-saw	570.0	13.5	20.1	6.6	15.0	0.4	5.2	529.2	0.3	35.3	9.0	\$20.00	\$3,938.12	\$103.63
Top_Pulpwood		13.5				0.4			0.0			\$6.00	\$80.71	\$2.12
<b>Group Total</b>	<b>12,255.0</b>	<b>3,511.4</b>	<b>20.1</b>	<b>126.1</b>	<b>322.5</b>	<b>92.4</b>	<b>5.2</b>	<b>529.2</b>	<b>0.3</b>	<b>1.6</b>	<b>8.5</b>	<b>\$10.52</b>	<b>\$38,998.66</b>	<b>\$1,026.28</b>

### Stand Summary by Class, Group, Product and Dbh

Sampling Method:	Plot
BAF / Plot Size:	0.03
Stand Acres:	38.0
Cruiser:	Timberland Services

Tract Name:	Spooner Tom Judge Tract 2
Stand ID:	Planted Longleaf Pine
Location:	Turner County, GA
Date Cruised:	7/6/2020
Sawlog Vol Units:	Scrib



### Pine ---> Pine Class

		Stand Total				Per Acre				Avg. Tree			Avg. Heights		
DBH	Trees	PW Tons	Saw Tons	MBF	BA	Trees	PW Tons	Saw Tons	BF	Tons/Tree	BF/Tree	Hs	Hp	Hm	
Submerch	3	47.5			0.06	1.3									
Repro/Submerch Total		47.5			0.06	1.3								32.0	
Pulpwood															
	5	285.0	21.1		1.02	7.5	0.56			0.074			24.5	24.5	
	6	665.0	73.5		3.44	17.5	1.94			0.111			26.2	26.2	
	7	3,040.0	600.2		21.38	80.0	15.80			0.197			39.1	39.1	
	8	3,325.0	886.7		30.54	87.5	23.33			0.267			40.9	40.9	
	9	1,805.0	635.3		20.98	47.5	16.72			0.352			43.1	43.1	
	10	1,330.0	588.4		19.09	35.0	15.48			0.442			44.0	44.0	
	11	855.0	441.8		14.85	22.5	11.63			0.517			41.5	41.5	
	12	285.0	177.2		5.89	7.5	4.66			0.622			41.8	41.8	
	13	95.0	73.6		2.30	2.5	1.94			0.775			45.5	45.5	
Pulpwood Total		11,685.0	3,498.0		119.50	307.5	92.05			0.301			40.0	40.0	

		Stand Total				Per Acre				Avg. Tree			Avg. Heights		
DBH	Trees	PW Tons	Saw Tons	MBF	BA	Trees	PW Tons	Saw Tons	BF	Tons/Tree	BF/Tree	Hs	Hp	Hm	
Chip-n-saw	9	570.0	13.5	20.1	6.63	15.0	0.35	5.18	529.22	0.345	35.281	41.8	50.4	50.4	
Chip-n-saw Total		570.0	13.5	20.1	6.63	15.0	0.35	5.18	529.22	0.345	35.281	41.8	50.4	50.4	

		Stand Total				Per Acre				Avg. Tree			Avg. Heights		
DBH	Trees	PW Tons	Saw Tons	MBF	BA	Trees	PW Tons	Saw Tons	BF	Tons/Tree	BF/Tree	Hs	Hp	Hm	
Merch Group Total		12,255.0	3,511.4	20.1	126.13	322.5	92.41	5.18	529.22	0.303	1.641	41.8	40.5	40.5	

### All Species Groups

		Stand Total				Per Acre				Avg. Tree			Avg. Heights		
DBH	Trees	PW Tons	Saw Tons	MBF	BA	Trees	PW Tons	Saw Tons	BF	Tons/Tree	BF/Tree	Hs	Hp	Hm	
Merch Grand Total		12,255.0	3,511.4	20.1	126.13	322.5	92.41	5.18	529.22	0.303	1.641	41.8	40.5	40.5	

**Stand Value Summary by Class, Group and Product**

Sampling Method:	Plot
BAF / Plot Size:	0.1
Stand Acres:	14.0
Cruiser:	Timberland Services

Tract Name:	Spooner Tom Judge Tract 2
Stand ID:	Hardwood Branch
Location:	Turner County, GA
Date Cruised:	7/6/2020
Saw Volume Unit	Scrib



**Pine ----> Pine Class**

Stand Total			
Product	Trees	PW Tons	Saw Tons
Pulpwood	84.0	8.8	
Sawlog	56.0	24.8	96.1
Top_Pulpwood		24.8	
<b>Group Total</b>	<b>140.0</b>	<b>33.6</b>	<b>96.1</b>

Per Acre			
BA	Trees	PW Tons	Saw Tons
1.1	6.0	0.6	
7.9	4.0	1.8	6.9
9.0	10.0	2.4	6.9

AVG. Tree		
Tons/Tree	BF/Tree	Avg DBH
0.1		5.7
1.7	320.1	19.0
0.4		
0.9	128.1	12.8

Value	
\$/Ton	Stand Tot \$
\$10.00	\$87.71
\$30.00	\$2,881.88
\$6.00	\$148.78
\$24.06	\$3,118.37

**Pine Class**

Stand Total			
Product	Trees	PW Tons	Saw Tons
Class Total	140.0	33.6	96.1

Per Acre			
BA	Trees	PW Tons	Saw Tons
9.0	10.0	2.4	6.9

AVG. Tree		
Tons/Tree	BF/Tree	Avg DBH
0.9	128.1	12.8

Value	
\$/Ton	Stand Tot \$
\$24.06	\$3,118.37

**Oak ----> Hardwood Class**

Stand Total			
Product	Trees	PW Tons	Saw Tons
Sawlog	28.0	0.0	31.8
Group Total	28.0	0.0	31.8

Per Acre			
BA	Trees	PW Tons	Saw Tons
3.5	2.0	0.0	2.3
3.5	2.0	0.0	2.3

AVG. Tree		
Tons/Tree	BF/Tree	Avg DBH
1.1	174.0	18.0
1.1	174.0	18.0

Value	
\$/Ton	Stand Tot \$
\$38.00	\$1,209.93
\$38.00	\$1,209.93

**Misc. Hardwood ----> Hardwood Class**

Stand Total			
Product	Trees	PW Tons	Saw Tons
Pulpwood	1,092.0	466.1	
Palletwood	28.0	0.0	10.2
Sawlog	28.0	0.0	30.3
<b>Group Total</b>	<b>1,148.0</b>	<b>466.1</b>	<b>40.6</b>

Per Acre			
BA	Trees	PW Tons	Saw Tons
46.9	78.0	33.3	
1.3	2.0	0.0	0.7
2.8	2.0	0.0	2.2
51.0	82.0	33.3	2.9

AVG. Tree		
Tons/Tree	BF/Tree	Avg DBH
0.4		10.5
0.4	51.2	11.0
1.1	182.5	16.0
0.4	5.7	10.7

Value	
\$/Ton	Stand Tot \$
\$6.00	\$2,796.32
\$0.08	\$0.79
\$30.00	\$909.76
\$7.32	\$3,706.87

**Hardwood Class**

Product	Stand Total			MBF
	Trees	PW Tons	Saw Tons	
<b>Class Total</b>	1,176.0	466.1	72.4	11.4

BA	Per Acre			BF
	Trees	PW Tons	Saw Tons	
54.5	84.0	33.3	5.2	815.3

Tons/Tree	Avg. Tree		Avg DBH
	BF/Tree		
0.5	9.7	10.9	

\$/Ton	Value	
	Stand Tot \$	Per Acre \$
\$9.13	\$4,916.80	\$351.20

**All Species Groups ---> All Secondary groups**

Product	Stand Total			MBF
	Trees	PW Tons	Saw Tons	
<b>Grand Total</b>	1,316.0	499.6	168.5	29.3

BA	Per Acre			BF
	Trees	PW Tons	Saw Tons	
63.5	94.0	35.7	12.0	2,095.8

Tons/Tree	Avg. Tree		Avg DBH
	BF/Tree		
0.5	22.3	11.1	

\$/Ton	Value	
	Stand Tot \$	Per Acre \$
\$12.03	\$8,035.17	\$573.94

Stand Summary by Class, Group, Product and Dbh

Sampling Method:	Plot
BAF / Plot Size:	0.1
Stand Acres:	14.0
Cruiser:	Timberland Services

Tract Name:	Spooner Tom Judge Tract 2
Stand ID:	Hardwood Branch
Location:	Turner County, GA
Date Cruised:	7/6/2020
Sawlog Vol Units:	Scrib



Pine ---> Pine Class

		Stand Total				Per Acre				Avg. Tree			Avg. Heights		
DBH	Trees	PW Tons	Saw Tons	MBF	BA	Trees	PW Tons	Saw Tons	BF	Tons/Tree	BF/Tree	Hs	Hp	Hm	
Pulpwood	5	56.0	3.8		0.55	4.0	0.27			0.068			22.0	22.0	
	7	28.0	4.9		0.53	2.0	0.35			0.176			32.5	32.5	
<b>Pulpwood Total</b>		<b>84.0</b>	<b>8.8</b>		<b>1.08</b>	<b>6.0</b>	<b>0.63</b>			<b>0.400</b>			<b>25.5</b>	<b>25.5</b>	
Sawlog	14	28.0	6.0	3.8	2.14	2.0	0.43	1.67	268.44	0.833	134.221	40.5	73.1	73.1	
	23	28.0	18.8	14.2	5.77	2.0	1.35	5.20	1012.08	2.598	506.042	48.5	90.9	90.9	
<b>Sawlog Total</b>		<b>56.0</b>	<b>24.8</b>	<b>17.9</b>	<b>7.91</b>	<b>4.0</b>	<b>1.77</b>	<b>6.86</b>	<b>1280.53</b>	<b>1.715</b>	<b>320.131</b>	<b>44.5</b>	<b>82.0</b>	<b>82.0</b>	
<b>Merch Group Total</b>		<b>140.0</b>	<b>33.6</b>	<b>17.9</b>	<b>8.99</b>	<b>10.0</b>	<b>2.40</b>	<b>6.86</b>	<b>1280.53</b>	<b>0.926</b>	<b>128.053</b>	<b>44.5</b>	<b>48.1</b>	<b>48.1</b>	

Pine Class

		Stand Total				Per Acre				Avg. Tree			Avg. Heights		
DBH	Trees	PW Tons	Saw Tons	MBF	BA	Trees	PW Tons	Saw Tons	BF	Tons/Tree	BF/Tree	Hs	Hp	Hm	
Merch Class Total	140.0	33.6	96.1	17.9	8.99	10.0	2.40	6.86	1280.53	0.926	128.053	44.5	48.1	48.1	

Oak ---> Hardwood Class

		Stand Total				Per Acre				Avg. Tree			Avg. Heights		
DBH	Trees	PW Tons	Saw Tons	MBF	BA	Trees	PW Tons	Saw Tons	BF	Tons/Tree	BF/Tree	Hs	Hp	Hm	
Sawlog	18	28.0	0.0	4.9	3.53	2.0	0.00	2.27	347.93	1.137	173.963	24.5	24.5	24.5	
<b>Sawlog Total</b>		<b>28.0</b>	<b>0.0</b>	<b>4.9</b>	<b>3.53</b>	<b>2.0</b>	<b>0.00</b>	<b>2.27</b>	<b>347.93</b>	<b>1.137</b>	<b>173.963</b>	<b>24.5</b>	<b>24.5</b>	<b>24.5</b>	
<b>Merch Group Total</b>		<b>28.0</b>	<b>0.0</b>	<b>4.9</b>	<b>3.53</b>	<b>2.0</b>	<b>0.00</b>	<b>2.27</b>	<b>347.93</b>	<b>1.137</b>	<b>173.963</b>	<b>24.5</b>	<b>24.5</b>	<b>24.5</b>	

Misc. Hardwood ---> Hardwood Class

		Stand Total				Per Acre				Avg. Tree			Avg. Heights		
DBH	Trees	PW Tons	Saw Tons	MBF	BA	Trees	PW Tons	Saw Tons	BF	Tons/Tree	BF/Tree	Hs	Hp	Hm	
Merch Group Total	28.0	0.0	31.8	4.9	3.53	2.0	0.00	2.27	347.93	1.137	173.963	24.5	24.5	24.5	

		Stand Total					Per Acre					Avg. Tree			Avg. Heights		
		DBH	Trees	PW Tons	Saw Tons	MBF	BA	Trees	PW Tons	Saw Tons	BF	Tons/Tree	BF/Tree	Hs	Hp	Hm	
Pulpwood		7	280.0	44.2			5.35	20.0	3.16		0.158		26.9	26.9			
		8	168.0	39.2			4.19	12.0	2.80		0.233		32.2	32.2			
		9	112.0	39.1			3.53	8.0	2.80		0.349		40.8	40.8			
		10	196.0	69.0			7.64	14.0	4.93		0.352		30.8	30.8			
		11	84.0	40.5			3.96	6.0	2.89		0.482		35.8	35.8			
		13	112.0	84.5			7.37	8.0	6.04		0.755		42.0	42.0			
		14	28.0	12.3			2.14	2.0	0.88		0.438		16.5	16.5			
		15	28.0	28.1			2.45	2.0	2.01		1.003		41.5	41.5			
		17	28.0	40.4			3.15	2.0	2.89		1.444		48.5	48.5			
		18	56.0	68.8			7.07	4.0	4.91		1.228		33.5	33.5			
Pulpwood Total			1,092.0	466.1			46.85	78.0	33.29		0.427		33.1	33.1			

		DBH	Trees	PW Tons	Saw Tons	MBF	BA	Trees	PW Tons	Saw Tons	BF	Tons/Tree	BF/Tree	Hs	Hp	Hm
Palletwood		11	28.0	0.0	10.2	1.4	1.32	2.0	0.00	0.73	102.32	0.366	51.160	24.5	24.5	24.5
Palletwood Total			28.0	0.0	10.2	1.4	1.32	2.0	0.00	0.73	102.32	0.366	51.160	24.5	24.5	24.5

		DBH	Trees	PW Tons	Saw Tons	MBF	BA	Trees	PW Tons	Saw Tons	BF	Tons/Tree	BF/Tree	Hs	Hp	Hm
Sawlog		16	28.0	0.0	30.3	5.1	2.79	2.0	0.00	2.17	365.04	1.083	182.520	38.5	38.5	38.5
Sawlog Total			28.0	0.0	30.3	5.1	2.79	2.0	0.00	2.17	365.04	1.083	182.520	38.5	38.5	38.5

		DBH	Trees	PW Tons	Saw Tons	MBF	BA	Trees	PW Tons	Saw Tons	BF	Tons/Tree	BF/Tree	Hs	Hp	Hm
Merch Group Total			1,148.0	466.1	40.6	6.5	50.96	82.0	33.29	2.90	467.36	0.441	5.700	31.5	33.0	33.0

### Hardwood Class

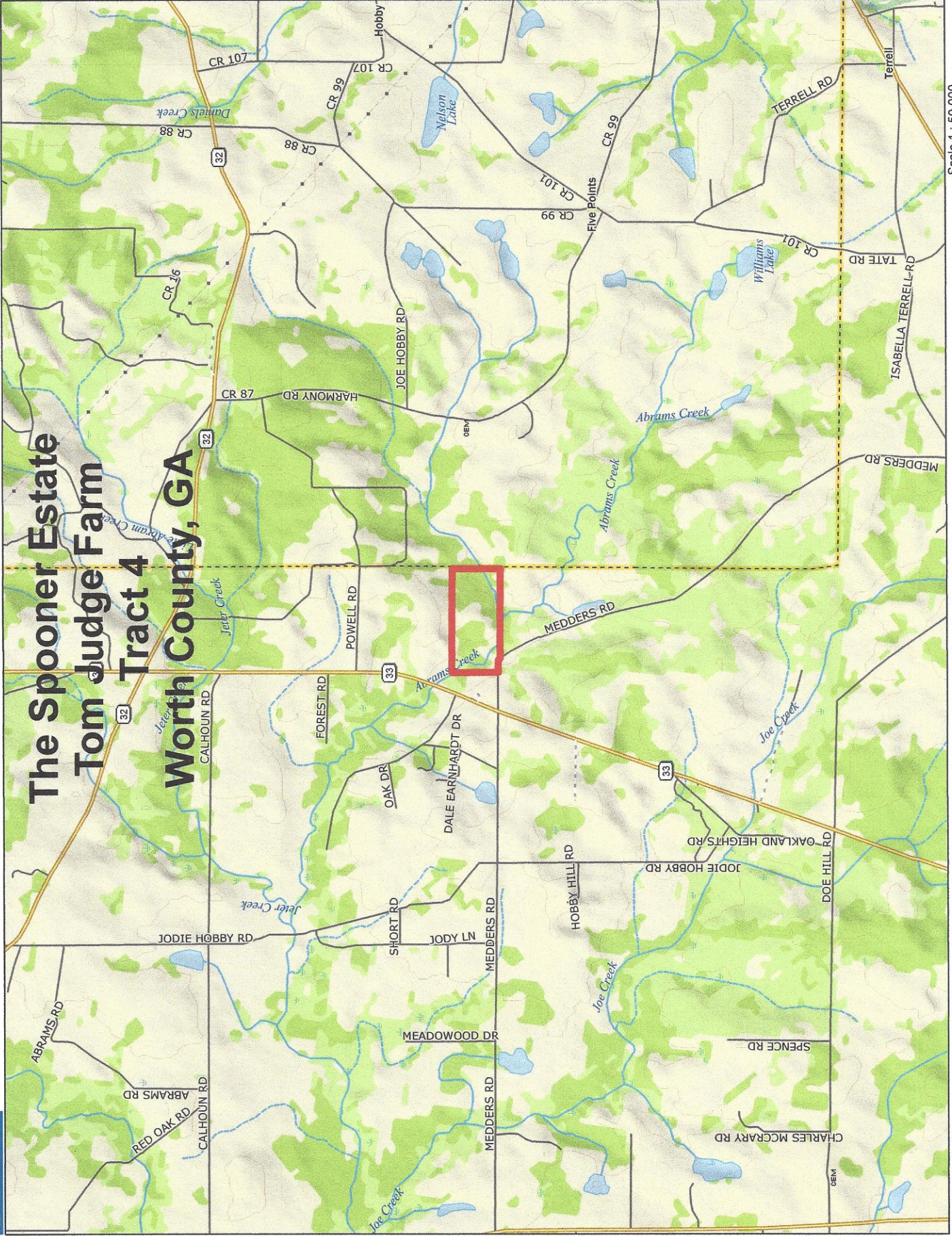
		Stand Total					Per Acre					Avg. Tree			Avg. Heights		
		DBH	Trees	PW Tons	Saw Tons	MBF	BA	Trees	PW Tons	Saw Tons	BF	Tons/Tree	BF/Tree	Hs	Hp	Hm	
Merch Class Total			1,176.0	466.1	72.4	11.4	54.50	84.0	33.29	5.17	815.29	0.458	9.706	29.2	32.8	32.8	

### All Species Groups

		Stand Total					Per Acre					Avg. Tree			Avg. Heights		
		DBH	Trees	PW Tons	Saw Tons	MBF	BA	Trees	PW Tons	Saw Tons	BF	Tons/Tree	BF/Tree	Hs	Hp	Hm	
Merch Grand Total			1,316.0	499.6	168.5	29.3	63.49	94.0	35.69	12.03	2095.81	0.508	22.296	35.3	34.4	34.4	



# The Spooner Estate Tom Judge Farm Tract 4 Worth County, GA



Data use subject to license.

© Delorme, XMap® 7.

www.delorme.com

TN  
MM (6.4"=1")

Scale 1 : 50,000






1" = 4,166.7 ft

Data Zoom 12-0

# The Spooner Estate Tom Judge Farm Tract 4 Worth County, GA



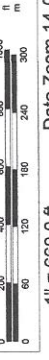
**Stand Information & Legend**

-  Natural Pine & Hdwd +/- 107 ac.
-  Planted Longleaf Pine +/- 11 ac.
-  Tract Boundary

Data use subject to license.  
© DeLorme, XMap® 7.  
www.delorme.com



Scale 1 : 7,920



1" = 660.0 ft Data Zoom 14-0

Tract Value Summary by Class, Group and Product

Number of Stands:	2
# Plots/points:	58
Total Acres:	118
Sawlog Vol Units:	Scrib

Tract Name:	Spoooner Tom Judge Tract 4
Location:	Worth County, GA
Report Date:	7/17/2020



Pine ---> Pine Class

Product	Tract Total		
	Trees	PW Tons	Saw Tons
Pulpwood	4,111.3	1,494.7	
Chip-n-saw	1,131.0	105.8	504.9
Poles	980.8	101.4	1,130.2
Sawlog	5,907.3	1,244.0	8,479.5
Top_Pulpwood		1,451.2	
Group Total	12,130.4	2,945.9	10,114.7

BA	Per Acre		
	Trees	PW Tons	Saw Tons
15.1	34.8	12.7	
5.7	9.6	0.9	4.3
9.8	8.3	0.9	9.6
75.9	50.1	10.5	71.9
106.5	102.8	25.0	85.7

Tons/Tree	Avg. Tree	
	BF/Tree	Avg DBH
0.4		8.9
0.4	56.2	10.5
1.2	181.7	14.7
1.4	245.9	16.7
0.2		
1.1	139.7	13.8

\$/Ton	Value	
	Stand Tot \$	Per Acre \$
\$10.00	\$14,947.12	\$126.67
\$20.00	\$10,098.91	\$85.58
\$60.00	\$67,814.94	\$574.70
\$32.00	\$271,343.35	\$2,299.52
\$6.00	\$8,707.30	\$73.79
\$28.55	\$372,911.63	\$3,160.27

Pine Class

Product	Tract Total		
	Trees	PW Tons	Saw Tons
Pulpwood	4,111.3	1,494.7	
Chip-n-saw	1,131.0	105.8	504.9
Poles	980.8	101.4	1,130.2
Sawlog	5,907.3	1,244.0	8,479.5
Top_Pulpwood		1,451.2	
Group Total	12,130.4	2,945.9	10,114.7

BA	Per Acre		
	Trees	PW Tons	Saw Tons
106.5	102.8	25.0	85.7

Tons/Tree	Avg. Tree	
	BF/Tree	Avg DBH
1.1		13.8

\$/Ton	Value	
	Stand Tot \$	Per Acre \$
\$28.55	\$372,911.63	\$3,160.27

Oak ---> Hardwood Class

Product	Tract Total		
	Trees	PW Tons	Saw Tons
Pulpwood	267.5	0.0	293.8
Sawlog	267.5	0.0	293.8
Group Total	535.0	0.0	587.6

BA	Per Acre		
	Trees	PW Tons	Saw Tons
3.6	2.3	0.0	2.5
3.6	2.3	0.0	2.5

Tons/Tree	Avg. Tree	
	BF/Tree	Avg DBH
1.1	162.1	17.1
1.1	162.1	17.1

\$/Ton	Value	
	Stand Tot \$	Per Acre \$
\$40.00	\$11,750.52	\$99.58
\$40.00	\$11,750.52	\$99.58

Misc. Hardwood ---> Hardwood Class

Product	Tract Total		
	Trees	PW Tons	Saw Tons
Pulpwood	3,098.5	1,109.2	
Palletwood	89.2	0.0	47.7
Sawlog	111.5	0.0	69.8
Group Total	3,299.2	1,109.2	117.5

BA	Per Acre		
	Trees	PW Tons	Saw Tons
13.0	26.3	9.4	
0.6	0.8	0.0	0.4
1.0	0.9	0.0	0.6
14.6	28.0	9.4	1.0

Tons/Tree	Avg. Tree	
	BF/Tree	Avg DBH
0.4		9.5
0.5	74.4	11.8
0.6	97.5	13.6
0.4	5.3	9.8

\$/Ton	Value	
	Stand Tot \$	Per Acre \$
\$5.00	\$5,546.04	\$47.00
\$12.00	\$572.35	\$4.85
\$30.00	\$2,094.70	\$17.75
\$6.70	\$8,213.09	\$69.60

### Hardwood Class

Product	Tract Total			
	Trees	PW Tons	Saw Tons	MBF
Class Total	3,566.7	1,109.2	411.3	60.9

BA	Per Acre			
	Trees	PW Tons	Saw Tons	BF
18.2	30.2	9.4	3.5	515.7

Tons/Tree	Avg. Tree	
	Bf/Tree	Avg DBH
0.4	17.1	10.5

\$/Ton	Value	
	Stand Tot \$	Per Acre \$
\$13.13	\$19,963.61	\$169.18

### All Species Groups

Product	Tract Total			
	Trees	PW Tons	Saw Tons	MBF
Grand Total	15,697.1	4,055.1	10,526.0	1,755.2

BA	Per Acre			
	Trees	PW Tons	Saw Tons	BF
124.6	133.0	34.4	89.2	14,874.8

Tons/Tree	Avg. Tree	
	Bf/Tree	Avg DBH
0.9	111.8	13.1

\$/Ton	Value	
	Stand Tot \$	Per Acre \$
\$26.94	\$392,875.23	\$3,329.45

**Stand Value Summary by Class, Group and Product**

Sampling Method:	Plot
BAF / Plot Size:	0.1
Stand Acres:	107.0
Cruiser:	Timberland Services

Tract Name:	Spooner Tom Judge Tract 4
Stand ID:	Natural Pine & Hardwood
Location:	Worth County, GA
Date Cruised:	7/16/2020
Saw Volume Unit	Scrib



**Pine ---> Pine Class**

Product	Stand Total			Per Acre					
	Trees	PW Tons	Saw Tons	BA	Trees	PW Tons	Saw Tons	BF	MBF
Pulpwood	1,471.3	532.7		5.8	13.8	5.0			
Chip-n-saw	691.0	50.8	331.5	3.9	6.5	0.5	3.1	385.2	41.2
Poles	980.8	101.4	1,130.2	10.8	9.2	0.9	10.6	1,665.3	178.2
Sawlog	5,907.3	1,244.0	8,479.5	83.7	55.2	11.6	79.2	13,576.1	1,452.6
<b>Top_Pulpwood</b>		<b>1,396.3</b>				<b>13.0</b>			
<b>Group Total</b>	<b>9,050.4</b>	<b>1,928.9</b>	<b>9,941.2</b>	<b>104.2</b>	<b>84.6</b>	<b>18.0</b>	<b>92.9</b>	<b>15,626.6</b>	<b>1,672.0</b>

Avg. Tree			Value		
Tons/Tree	BF/Tree	Avg DBH	\$/Ton	Stand Tot \$	Per Acre \$
0.4		8.8	\$10.00	\$5,326.53	\$49.78
0.5	59.7	10.5	\$20.00	\$6,630.16	\$61.96
1.2	181.7	14.7	\$60.00	\$67,814.94	\$633.78
1.4	245.9	16.7	\$32.00	\$271,343.35	\$2,535.92
0.2			\$6.00	\$8,377.51	\$78.29
1.3	184.7	15.0	\$30.29	\$359,492.50	\$3,359.74

**Pine Class**

Product	Stand Total			Per Acre				
	Trees	PW Tons	Saw Tons	BA	Trees	PW Tons	Saw Tons	BF
Class Total	9,050.4	1,928.9	9,941.2	104.2	84.6	18.0	92.9	15,626.6

Avg. Tree			Value		
Tons/Tree	BF/Tree	Avg DBH	\$/Ton	Stand Tot \$	Per Acre \$
1.3	184.7	15.0	\$30.29	\$359,492.50	\$3,359.74

**Oak ---> Hardwood Class**

Product	Stand Total			Per Acre					
	Trees	PW Tons	Saw Tons	BA	Trees	PW Tons	Saw Tons	BF	MBF
Sawlog	267.5	0.0	293.8	4.0	2.5	0.0	2.7	405.2	43.4
<b>Group Total</b>	<b>267.5</b>	<b>0.0</b>	<b>293.8</b>	<b>4.0</b>	<b>2.5</b>	<b>0.0</b>	<b>2.7</b>	<b>405.2</b>	<b>43.4</b>

Avg. Tree			Value		
Tons/Tree	BF/Tree	Avg DBH	\$/Ton	Stand Tot \$	Per Acre \$
1.1	162.1	17.1	\$40.00	\$11,750.52	\$109.82
1.1	162.1	17.1	\$40.00	\$11,750.52	\$109.82

**Misc. Hardwood ---> Hardwood Class**

Product	Stand Total			Per Acre					
	Trees	PW Tons	Saw Tons	BA	Trees	PW Tons	Saw Tons	BF	MBF
Pulpwood	3,098.5	1,109.2		14.4	29.0	10.4			
Palletwood	89.2	0.0	47.7	0.6	0.8	0.0	0.4	62.0	6.6
Sawlog	111.5	0.0	69.8	1.1	1.0	0.0	0.7	101.5	10.9
<b>Group Total</b>	<b>3,299.2</b>	<b>1,109.2</b>	<b>117.5</b>	<b>16.0</b>	<b>30.8</b>	<b>10.4</b>	<b>1.1</b>	<b>163.6</b>	<b>17.5</b>

Avg. Tree			Value		
Tons/Tree	BF/Tree	Avg DBH	\$/Ton	Stand Tot \$	Per Acre \$
0.4		9.5	\$5.00	\$5,546.04	\$51.83
0.5	74.4	11.8	\$12.00	\$572.35	\$5.35
0.6	97.5	13.6	\$30.00	\$2,094.70	\$19.58
0.4	5.3	9.8	\$6.70	\$8,213.09	\$76.76

### Hardwood Class

Product	Stand Total			MBF
	Trees	PW Tons	Saw Tons	
Class Total	3,566.7	1,109.2	411.3	60.9

Per Acre				
BA	Trees	PW Tons	Saw Tons	BF
20.0	33.3	10.4	3.8	568.7

Avg. Tree		
Tons/Tree	BF/Tree	Avg DBH
0.4	17.1	10.5

Value		
\$/Ton	Stand Tot \$	Per Acre \$
\$13.13	\$19,963.61	\$186.58

### All Species Groups

Product	Stand Total			MBF
	Trees	PW Tons	Saw Tons	
Grand Total	12,617.1	3,038.1	10,352.5	1,732.9

Per Acre				
BA	Trees	PW Tons	Saw Tons	BF
124.3	117.9	28.4	96.8	16,195.3

Avg. Tree		
Tons/Tree	BF/Tree	Avg DBH
1.1	137.3	13.9

Value		
\$/Ton	Stand Tot \$	Per Acre \$
\$28.34	\$379,456.11	\$3,546.32

Sampling Method:	Plot
BAF / Plot Size:	0.1
Stand Acres:	107.0
Cruiser:	Timberland Services

Tract Name:	Spoooner Tom Judge Tract 4
Stand ID:	Natural Pine & Hardwood
Location:	Worth County, GA
Date Cruised:	7/16/2020
Sawlog Vol Units:	Scrib



Stand Summary by Class, Group, Product and Dbh

Pine ---> Pine Class

		Stand Total				Per Acre				Avg. Tree		Avg. Heights		
DBH	Trees	PW Tons	Saw Tons	MBF	BA	Trees	PW Tons	Saw Tons	BF	Tons/Tree	BF/Tree	Hs	Hp	Him
<b>Pulpwood</b>														
5	111.5	7.8			0.14	1.0	0.07			0.070			22.9	22.9
6	312.1	36.4			0.57	2.9	0.34			0.117			28.5	28.5
7	312.1	58.3			0.78	2.9	0.55			0.187			36.5	36.5
8	156.0	43.2			0.51	1.5	0.40			0.277			43.6	43.6
9	245.2	93.3			1.01	2.3	0.87			0.381			49.8	49.8
10	89.2	43.5			0.45	0.8	0.41			0.488			53.5	53.5
11	66.9	46.7			0.41	0.6	0.44			0.699			69.5	69.5
12	44.6	27.8			0.33	0.4	0.26			0.623			42.0	42.0
13	22.3	16.5			0.19	0.2	0.15			0.740			42.5	42.5
14	44.6	53.5			0.45	0.4	0.50			1.199			73.5	73.5
15	22.3	25.5			0.26	0.2	0.24			1.142			52.5	52.5
17	22.3	40.9			0.33	0.2	0.38			1.834			74.5	74.5
19	22.3	39.2			0.41	0.2	0.37			1.759			48.5	48.5
<b>Pulpwood Total</b>	<b>1,471.3</b>	<b>532.7</b>			<b>5.84</b>	<b>13.8</b>	<b>4.98</b>			<b>1.311</b>			<b>41.7</b>	<b>41.7</b>

<b>Chip-n-saw</b>														
9	44.6	2.9	14.1	1.5	0.18	0.4	0.03	0.13	13.86	0.316	33.270	36.5	57.3	57.3
10	267.5	18.8	111.3	13.2	1.36	2.5	0.18	1.04	123.54	0.416	49.414	40.3	59.8	59.8
11	356.7	27.5	191.9	24.6	2.20	3.3	0.26	1.79	230.34	0.538	69.102	44.5	63.7	63.7
12	22.3	1.7	14.2	1.9	0.15	0.2	0.02	0.13	17.51	0.638	84.025	48.5	69.2	69.2
<b>Chip-n-saw Total</b>	<b>691.0</b>	<b>50.8</b>	<b>331.5</b>	<b>41.2</b>	<b>3.90</b>	<b>6.5</b>	<b>0.48</b>	<b>3.10</b>	<b>385.24</b>	<b>0.480</b>	<b>59.651</b>	<b>42.5</b>	<b>62.0</b>	<b>62.0</b>

<b>Poles</b>														
12	66.9	3.8	47.3	6.4	0.49	0.6	0.04	0.44	59.76	0.707	95.616	51.2	65.7	65.7
13	200.6	17.3	169.1	24.6	1.73	1.9	0.16	1.58	229.49	0.843	122.392	52.1	72.0	72.0
14	178.3	22.2	174.5	26.8	1.78	1.7	0.21	1.63	250.91	0.978	150.546	51.6	76.7	76.7
15	334.4	31.4	412.8	65.2	3.83	3.1	0.29	3.86	608.90	1.235	194.847	59.7	79.5	79.5
16	66.9	8.6	94.1	15.5	0.87	0.6	0.08	0.88	144.98	1.407	231.972	59.2	83.1	83.1
17	89.2	11.9	147.2	24.9	1.31	0.8	0.11	1.38	232.48	1.651	278.980	62.5	85.9	85.9
18	44.6	6.3	85.4	14.8	0.74	0.4	0.06	0.80	138.74	1.915	332.968	65.5	88.6	88.6
<b>Poles Total</b>	<b>980.8</b>	<b>101.4</b>	<b>1,130.2</b>	<b>178.2</b>	<b>10.76</b>	<b>9.2</b>	<b>0.95</b>	<b>10.56</b>	<b>1665.25</b>	<b>1.152</b>	<b>181.664</b>	<b>56.6</b>	<b>77.7</b>	<b>77.7</b>

<b>Sawlog</b>														
12	512.7	52.7	329.4	45.5	3.76	4.8	0.49	3.08	425.12	0.642	88.720	45.1	65.6	65.6
13	668.8	54.7	561.9	80.8	5.76	6.3	0.51	5.25	755.26	0.840	120.842	52.7	69.1	69.1
14	869.4	75.3	888.1	134.6	8.69	8.1	0.70	8.30	1257.70	1.022	154.794	55.8	72.4	72.4
15	468.1	59.6	552.7	87.7	5.37	4.4	0.56	5.17	819.76	1.181	187.374	56.0	79.3	79.3
16	713.3	107.5	974.6	160.8	9.31	6.7	1.00	9.11	1502.73	1.366	225.409	56.9	81.4	81.4

17	535.0	100.2	822.3	140.8	7.88	5.0	0.94	7.69	1316.30	1.537	263.261	56.3	83.1	83.1
18	713.3	184.2	1,195.2	210.2	11.78	6.7	1.72	11.17	1964.25	1.675	294.638	54.2	84.2	84.2
19	468.1	126.2	919.1	165.7	8.61	4.4	1.18	8.59	1548.49	1.963	353.941	57.4	88.1	88.1
20	379.0	160.6	741.5	137.2	7.73	3.5	1.50	6.93	1282.25	1.957	362.048	49.7	85.4	85.4
21	156.0	69.7	357.7	67.5	3.51	1.5	0.65	3.34	630.78	2.293	432.536	53.4	90.0	90.0
22	178.3	94.6	442.9	85.4	4.40	1.7	0.88	4.14	797.78	2.484	478.670	52.1	90.8	90.8
23	133.8	86.6	345.2	67.5	3.61	1.3	0.81	3.23	630.73	2.581	504.587	48.7	89.4	89.4
24	89.2	54.3	278.2	54.8	2.62	0.8	0.51	2.60	512.55	3.120	615.060	55.8	95.0	95.0
25	22.3	17.8	70.7	14.2	0.71	0.2	0.17	0.66	132.34	3.171	635.235	50.5	94.0	94.0
<b>Sawlog Total</b>	<b>5,907.3</b>	<b>1,244.0</b>	<b>8,479.5</b>	<b>1,452.6</b>	<b>83.73</b>	<b>55.2</b>	<b>11.63</b>	<b>79.25</b>	<b>13576.06</b>	<b>1.435</b>	<b>245.906</b>	<b>53.9</b>	<b>79.4</b>	<b>79.4</b>

DBH	Trees	PW Tons	Saw Tons	MBF	BA	Trees	PW Tons	Saw Tons	BF	Tons/Tree	BF/Tree	Hs	Hp	Him
<b>Merch Group Total</b>	<b>9,050.4</b>	<b>1,928.9</b>	<b>9,941.2</b>	<b>1,672.0</b>	<b>104.23</b>	<b>84.6</b>	<b>18.03</b>	<b>92.91</b>	<b>15626.56</b>	<b>1.312</b>	<b>184.748</b>	<b>53.2</b>	<b>71.7</b>	<b>71.7</b>

**Pine Class**

<b>Stand Total</b>														
<b>Per Acre</b>														
DBH	Trees	PW Tons	Saw Tons	MBF	BA	Trees	PW Tons	Saw Tons	BF	Tons/Tree	BF/Tree	Hs	Hp	Him
<b>Merch Class Total</b>	<b>9,050.4</b>	<b>1,928.9</b>	<b>9,941.2</b>	<b>1,672.0</b>	<b>104.23</b>	<b>84.6</b>	<b>18.03</b>	<b>92.91</b>	<b>15626.56</b>	<b>1.312</b>	<b>184.748</b>	<b>53.2</b>	<b>71.7</b>	<b>71.7</b>
<b>All Class Total</b>	<b>9,050.4</b>	<b>1,928.9</b>	<b>9,941.2</b>	<b>1,672.0</b>	<b>104.23</b>	<b>84.6</b>	<b>18.03</b>	<b>92.91</b>	<b>15626.56</b>	<b>1.312</b>	<b>184.748</b>	<b>53.2</b>	<b>71.7</b>	<b>71.7</b>

**Oak ---> Hardwood Class**

<b>Stand Total</b>														
<b>Per Acre</b>														
DBH	Trees	PW Tons	Saw Tons	MBF	BA	Trees	PW Tons	Saw Tons	BF	Tons/Tree	BF/Tree	Hs	Hp	Him
<b>Sawlog</b>	<b>14</b>	<b>66.9</b>	<b>0.0</b>	<b>51.3</b>	<b>6.9</b>	<b>0.67</b>	<b>0.6</b>	<b>0.00</b>	<b>64.94</b>	<b>0.767</b>	<b>103.902</b>	<b>28.5</b>	<b>28.5</b>	<b>28.5</b>
	<b>15</b>	<b>89.2</b>	<b>0.0</b>	<b>87.0</b>	<b>11.8</b>	<b>1.02</b>	<b>0.8</b>	<b>0.00</b>	<b>110.61</b>	<b>0.975</b>	<b>132.734</b>	<b>34.5</b>	<b>34.5</b>	<b>34.5</b>
	<b>16</b>	<b>22.3</b>	<b>0.0</b>	<b>17.6</b>	<b>2.6</b>	<b>0.29</b>	<b>0.2</b>	<b>0.00</b>	<b>23.89</b>	<b>0.788</b>	<b>114.668</b>	<b>20.5</b>	<b>20.5</b>	<b>20.5</b>
	<b>18</b>	<b>44.6</b>	<b>0.0</b>	<b>44.1</b>	<b>6.7</b>	<b>0.74</b>	<b>0.4</b>	<b>0.00</b>	<b>62.39</b>	<b>0.989</b>	<b>149.746</b>	<b>20.5</b>	<b>20.5</b>	<b>20.5</b>
	<b>23</b>	<b>22.3</b>	<b>0.0</b>	<b>60.6</b>	<b>10.0</b>	<b>0.60</b>	<b>0.2</b>	<b>0.00</b>	<b>93.56</b>	<b>2.718</b>	<b>449.104</b>	<b>40.5</b>	<b>40.5</b>	<b>40.5</b>
	<b>24</b>	<b>22.3</b>	<b>0.0</b>	<b>33.3</b>	<b>5.3</b>	<b>0.65</b>	<b>0.2</b>	<b>0.00</b>	<b>49.76</b>	<b>1.494</b>	<b>238.836</b>	<b>16.5</b>	<b>16.5</b>	<b>16.5</b>
<b>Sawlog Total</b>	<b>267.5</b>	<b>0.0</b>	<b>293.8</b>	<b>43.4</b>	<b>3.97</b>	<b>2.5</b>	<b>0.00</b>	<b>2.75</b>	<b>405.15</b>	<b>1.098</b>	<b>162.062</b>	<b>28.5</b>	<b>28.5</b>	<b>28.5</b>

DBH	Trees	PW Tons	Saw Tons	MBF	BA	Trees	PW Tons	Saw Tons	BF	Tons/Tree	BF/Tree	Hs	Hp	Him
<b>Merch Group Total</b>	<b>267.5</b>	<b>0.0</b>	<b>293.8</b>	<b>43.4</b>	<b>3.97</b>	<b>2.5</b>	<b>0.00</b>	<b>2.75</b>	<b>405.15</b>	<b>1.098</b>	<b>162.062</b>	<b>28.5</b>	<b>28.5</b>	<b>28.5</b>
<b>All Group Total</b>	<b>267.5</b>	<b>0.0</b>	<b>293.8</b>	<b>43.4</b>	<b>3.97</b>	<b>2.5</b>	<b>0.00</b>	<b>2.75</b>	<b>405.15</b>	<b>1.098</b>	<b>162.062</b>	<b>28.5</b>	<b>28.5</b>	<b>28.5</b>

**Misc. Hardwood ---> Hardwood Class**

<b>Stand Total</b>														
<b>Per Acre</b>														
DBH	Trees	PW Tons	Saw Tons	MBF	BA	Trees	PW Tons	Saw Tons	BF	Tons/Tree	BF/Tree	Hs	Hp	Him
<b>Pulpwood</b>	<b>6</b>	<b>379.0</b>	<b>43.4</b>		<b>0.70</b>	<b>3.5</b>	<b>0.41</b>			<b>0.114</b>			<b>26.4</b>	<b>26.4</b>
	<b>7</b>	<b>780.2</b>	<b>125.4</b>		<b>1.95</b>	<b>7.3</b>	<b>1.17</b>			<b>0.161</b>			<b>27.8</b>	<b>27.8</b>
	<b>8</b>	<b>646.5</b>	<b>154.6</b>		<b>2.11</b>	<b>6.0</b>	<b>1.44</b>			<b>0.239</b>			<b>33.2</b>	<b>33.2</b>
	<b>9</b>	<b>468.1</b>	<b>150.2</b>		<b>1.93</b>	<b>4.4</b>	<b>1.40</b>			<b>0.321</b>			<b>36.2</b>	<b>36.2</b>
	<b>10</b>	<b>133.8</b>	<b>54.9</b>		<b>0.68</b>	<b>1.3</b>	<b>0.51</b>			<b>0.410</b>			<b>37.7</b>	<b>37.7</b>



11	222.9	116.1					1.37	2.1	1.08					0.521		40.5	40.5
12	44.6	27.7					0.33	0.4	0.26					0.621		40.5	40.5
13	44.6	33.4					0.38	0.4	0.31					0.749		41.5	41.5
14	133.8	110.7					1.34	1.3	1.03					0.828		39.0	39.0
15	89.2	89.1					1.02	0.8	0.83					0.999		42.0	42.0
16	89.2	109.1					1.16	0.8	1.02					1.224		46.3	46.3
17	22.3	30.8					0.33	0.2	0.29					1.381		45.5	45.5
19	22.3	30.1					0.41	0.2	0.28					1.349		32.5	32.5
24	22.3	34.0					0.65	0.2	0.32					1.524		20.5	20.5
<b>Pulpwood Total</b>	<b>3,098.5</b>	<b>1,109.2</b>					<b>14.37</b>	<b>29.0</b>	<b>10.37</b>					<b>0.358</b>		<b>33.3</b>	<b>33.3</b>

DBH	Trees	PW Tons	Saw Tons	MBF	BA	Trees	PW Tons	Saw Tons	BF	Tons/Tree	BF/Tree	Hs	Hp	Hm
11	22.3	0.0	12.1	1.5	0.14	0.2	0.00	0.11	14.46	0.542	69.419	42.5	42.5	42.5
12	66.9	0.0	35.6	5.1	0.49	0.6	0.00	0.33	47.55	0.533	76.086	32.5	32.5	32.5
<b>Palletwood Total</b>	<b>89.2</b>	<b>0.0</b>	<b>47.7</b>	<b>6.6</b>	<b>0.63</b>	<b>0.8</b>	<b>0.00</b>	<b>0.45</b>	<b>62.02</b>	<b>0.535</b>	<b>74.419</b>	<b>35.0</b>	<b>35.0</b>	<b>35.0</b>

DBH	Trees	PW Tons	Saw Tons	MBF	BA	Trees	PW Tons	Saw Tons	BF	Tons/Tree	BF/Tree	Hs	Hp	Hm
13	44.6	0.0	24.0	3.6	0.38	0.4	0.00	0.22	34.05	0.539	81.716	26.5	26.5	26.5
14	66.9	0.0	45.8	7.2	0.67	0.6	0.00	0.43	67.50	0.685	107.994	29.8	29.8	29.8
<b>Sawlog Total</b>	<b>111.5</b>	<b>0.0</b>	<b>69.8</b>	<b>10.9</b>	<b>1.05</b>	<b>1.0</b>	<b>0.00</b>	<b>0.65</b>	<b>101.54</b>	<b>0.626</b>	<b>97.482</b>	<b>28.5</b>	<b>28.5</b>	<b>28.5</b>

DBH	Trees	PW Tons	Saw Tons	MBF	BA	Trees	PW Tons	Saw Tons	BF	Tons/Tree	BF/Tree	Hs	Hp	Hm
<b>Merch Group Total</b>	<b>3,299.2</b>	<b>1,109.2</b>	<b>117.5</b>	<b>17.5</b>	<b>16.05</b>	<b>30.8</b>	<b>10.37</b>	<b>1.10</b>	<b>163.56</b>	<b>0.372</b>	<b>5.305</b>	<b>31.4</b>	<b>33.1</b>	<b>33.1</b>

**Hardwood Class**

DBH	Trees	PW Tons	Saw Tons	MBF	BA	Trees	PW Tons	Saw Tons	BF	Tons/Tree	BF/Tree	Hs	Hp	Hm
<b>Merch Class Total</b>	<b>3,566.7</b>	<b>1,109.2</b>	<b>411.3</b>	<b>60.9</b>	<b>20.02</b>	<b>33.3</b>	<b>10.37</b>	<b>3.84</b>	<b>568.71</b>	<b>0.426</b>	<b>17.061</b>	<b>29.7</b>	<b>32.8</b>	<b>32.8</b>

**All Species Groups**

DBH	Trees	PW Tons	Saw Tons	MBF	BA	Trees	PW Tons	Saw Tons	BF	Tons/Tree	BF/Tree	Hs	Hp	Hm
<b>Merch Grand Total</b>	<b>12,617.1</b>	<b>3,098.1</b>	<b>10,352.5</b>	<b>1,732.9</b>	<b>124.26</b>	<b>117.9</b>	<b>28.39</b>	<b>96.75</b>	<b>16195.28</b>	<b>1.061</b>	<b>137.345</b>	<b>51.8</b>	<b>60.7</b>	<b>60.7</b>

**Stand Value Summary by Class, Group and Product**

Sampling Method:	Plot
BAF / Plot Size:	0.03
Stand Acres:	11.0
Cruiser:	Timberland Services

Tract Name:	Spooner Tom Judge Tract 4
Stand ID:	Planted Longleaf Pine
Location:	Worth County, GA
Date Cruised:	7/16/2020
Saw Volume Unit	Scrib



**Pine ----> Pine Class**

Stand Total			
Product	Trees	PW Tons	Saw Tons
Pulpwood	2,640.0	962.1	
Chip-n-saw	440.0	55.0	173.4
Top_Pulpwood		55.0	
Group Total	3,080.0	1,017.0	173.4

Per Acre			
BA	Trees	PW Tons	Saw Tons
104.7	240.0	87.5	
23.7	40.0	5.0	15.8
128.5	280.0	92.5	15.8

Avg. Tree		
Tons/Tree	BF/Tree	Avg DBH
0.4	0.4	8.9
0.4	50.7	10.4
0.1		
0.4	7.2	9.2

Value		
\$/Ton	Stand Tot \$	Per Acre \$
\$10.00	\$9,620.59	\$874.60
\$20.00	\$3,468.75	\$315.34
\$6.00	\$329.79	\$29.98
\$11.27	\$13,419.13	\$1,219.92

**Pine Class**

Stand Total			
Product	Trees	PW Tons	Saw Tons
Class Total	3,080.0	1,017.0	173.4

Per Acre			
BA	Trees	PW Tons	Saw Tons
128.5	280.0	92.5	15.8

Avg. Tree		
Tons/Tree	BF/Tree	Avg DBH
0.4	7.2	9.2

Value		
\$/Ton	Stand Tot \$	Per Acre \$
\$11.27	\$13,419.13	\$1,219.92

**All Species Groups**

Stand Total			
Product	Trees	PW Tons	Saw Tons
Grand Total	3,080.0	1,017.0	173.4

Per Acre			
BA	Trees	PW Tons	Saw Tons
128.5	280.0	92.5	15.8

Avg. Tree		
Tons/Tree	BF/Tree	Avg DBH
0.4	7.2	9.2

Value		
\$/Ton	Stand Tot \$	Per Acre \$
\$11.27	\$13,419.13	\$1,219.92

Stand Summary by Class, Group, Product and Dbh

Sampling Method:	Plot
BAF / Plot Size:	0.03
Stand Acres:	11.0
Cruiser:	Timberland Services

Tract Name:	Spooner Tom Judge Tract 4
Stand ID:	Planted Longleaf Pine
Location:	Worth County, GA
Date Cruised:	7/16/2020
Sawlog Vol Units:	Scrib



Pine ---> Pine Class

		Stand Total				Per Acre				Avg. Tree		Avg. Heights		
DBH	Trees	PW Tons	Saw Tons	MBF	BA	Trees	PW Tons	Saw Tons	BF	Tons/Tree	BF/Tree	Hs	Hp	Him
Pulpwood	264.0	32.1			4.71	24.0	2.92			0.122		29.8	29.8	
	352.0	64.4			8.55	32.0	5.85			0.183		34.5	34.5	
	968.0	250.9			30.72	88.0	22.81			0.259		39.0	39.0	
	352.0	132.8			14.14	32.0	12.07			0.377		49.8	49.8	
	88.0	45.1			4.36	8.0	4.10			0.512		56.5	56.5	
	352.0	206.1			21.12	32.0	18.74			0.586		50.5	50.5	
	176.0	132.2			12.57	16.0	12.02			0.751		56.5	56.5	
	88.0	98.6			8.55	8.0	8.96			1.120		64.5	64.5	
<b>Pulpwood Total</b>	<b>2,640.0</b>	<b>962.1</b>			<b>104.72</b>	<b>240.0</b>	<b>87.46</b>			<b>0.385</b>		<b>43.1</b>	<b>43.1</b>	

DBH	Trees	PW Tons	Saw Tons	MBF
9	88.0	7.2	25.8	2.8
10	88.0	9.8	31.9	3.9
11	264.0	38.0	115.8	15.7
<b>Chip-n-saw Total</b>	<b>440.0</b>	<b>55.0</b>	<b>173.4</b>	<b>22.3</b>

BA	Trees	PW Tons	Saw Tons	BF
3.53	8.0	0.65	2.34	251.33
4.36	8.0	0.89	2.90	355.70
15.84	24.0	3.45	10.53	1422.79
<b>23.74</b>	<b>40.0</b>	<b>5.00</b>	<b>15.77</b>	<b>2029.82</b>

Hs	Hp	Him
32.5	56.8	56.8
32.5	59.7	59.7
32.5	62.4	62.4
<b>32.5</b>	<b>60.7</b>	<b>60.7</b>

DBH	Trees	PW Tons	Saw Tons	MBF
<b>Merch Group Total</b>	<b>3,080.0</b>	<b>1,017.0</b>	<b>173.4</b>	<b>22.3</b>

BA	Trees	PW Tons	Saw Tons	BF
<b>128.45</b>	<b>280.0</b>	<b>92.46</b>	<b>15.77</b>	<b>2029.82</b>

Hs	Hp	Him
<b>32.5</b>	<b>45.6</b>	<b>45.6</b>

Pine Class

		Stand Total				Per Acre				Avg. Tree		Avg. Heights		
DBH	Trees	PW Tons	Saw Tons	MBF	BA	Trees	PW Tons	Saw Tons	BF	Tons/Tree	BF/Tree	Hs	Hp	Him
<b>Merch Class Total</b>	<b>3,080.0</b>	<b>1,017.0</b>	<b>173.4</b>	<b>22.3</b>	<b>128.45</b>	<b>280.0</b>	<b>92.46</b>	<b>15.77</b>	<b>2029.82</b>	<b>0.387</b>	<b>7.249</b>	<b>32.5</b>	<b>45.6</b>	<b>45.6</b>

All Species Groups

		Stand Total				Per Acre				Avg. Tree		Avg. Heights		
DBH	Trees	PW Tons	Saw Tons	MBF	BA	Trees	PW Tons	Saw Tons	BF	Tons/Tree	BF/Tree	Hs	Hp	Him
<b>Merch Grand Total</b>	<b>3,080.0</b>	<b>1,017.0</b>	<b>173.4</b>	<b>22.3</b>	<b>128.45</b>	<b>280.0</b>	<b>92.46</b>	<b>15.77</b>	<b>2029.82</b>	<b>0.387</b>	<b>7.249</b>	<b>32.5</b>	<b>45.6</b>	<b>45.6</b>

		Stand Total				Per Acre				Avg. Tree		Avg. Heights		
DBH	Trees	PW Tons	Saw Tons	MBF	BA	Trees	PW Tons	Saw Tons	BF	Tons/Tree	BF/Tree	Hs	Hp	Him
<b>Merch Grand Total</b>	<b>3,080.0</b>	<b>1,017.0</b>	<b>173.4</b>	<b>22.3</b>	<b>128.45</b>	<b>280.0</b>	<b>92.46</b>	<b>15.77</b>	<b>2029.82</b>	<b>0.387</b>	<b>7.249</b>	<b>32.5</b>	<b>45.6</b>	<b>45.6</b>