

# TIMBERLAND SERVICES

Telephone: (229) 407-0208

wes.shiver@gmail.com

July 21, 2020

Attn: Cameron Morris  
(229) 881-7643  
Weeks Auction Group, Inc.  
2186 Sylvester Highway  
Moultrie, GA 31768

## RE: TIMBER INVENTORY REPORT FOR THE PRIMROSE FARM LOCATED IN LAND LOT 135 OF THE 14<sup>TH</sup> LAND DISTRICT OF WORTH & LAND LOT 136 OF THE 14<sup>TH</sup> LAND DISTRICT OF CRISP COUNTY, GEORGIA

Mrs. Chapman,

Enclosed are the results of the timber cruise that was requested for the +/- 143 timbered acres on the Primrose Farm located in Worth & Crisp County, Georgia. The cruise was conducted during the month of July 2020.

The merchantable timber on the tract in Worth County labeled in this report as "Tract 1" has a total estimated current value of **\$215,777 or \$1,944/timbered acre**. The merchantable timber on the tract in Worth County labeled in this report as "Tract 2" has a total estimated current value of **\$9,138 or \$1,015/timbered acre**. The merchantable timber on the tract in Crisp County labeled in this report as "Tract 3" has a total estimated current value of **\$52,615 or \$2,288/timbered acre**.

All acreages were estimated from aerial photography incorporated into a GIS mapping computer program.

Timber stumpage values coming from comparable sales in the area and published prices from Timber Mart-South were used in the valuation.

Total volume and value summaries for each timber stand are provided.

If you have any questions, please contact our office at your convenience.

Sincerely,



Wes Shiver  
Georgia Registered Forester #2809

## **General Assumptions and Limiting Conditions**

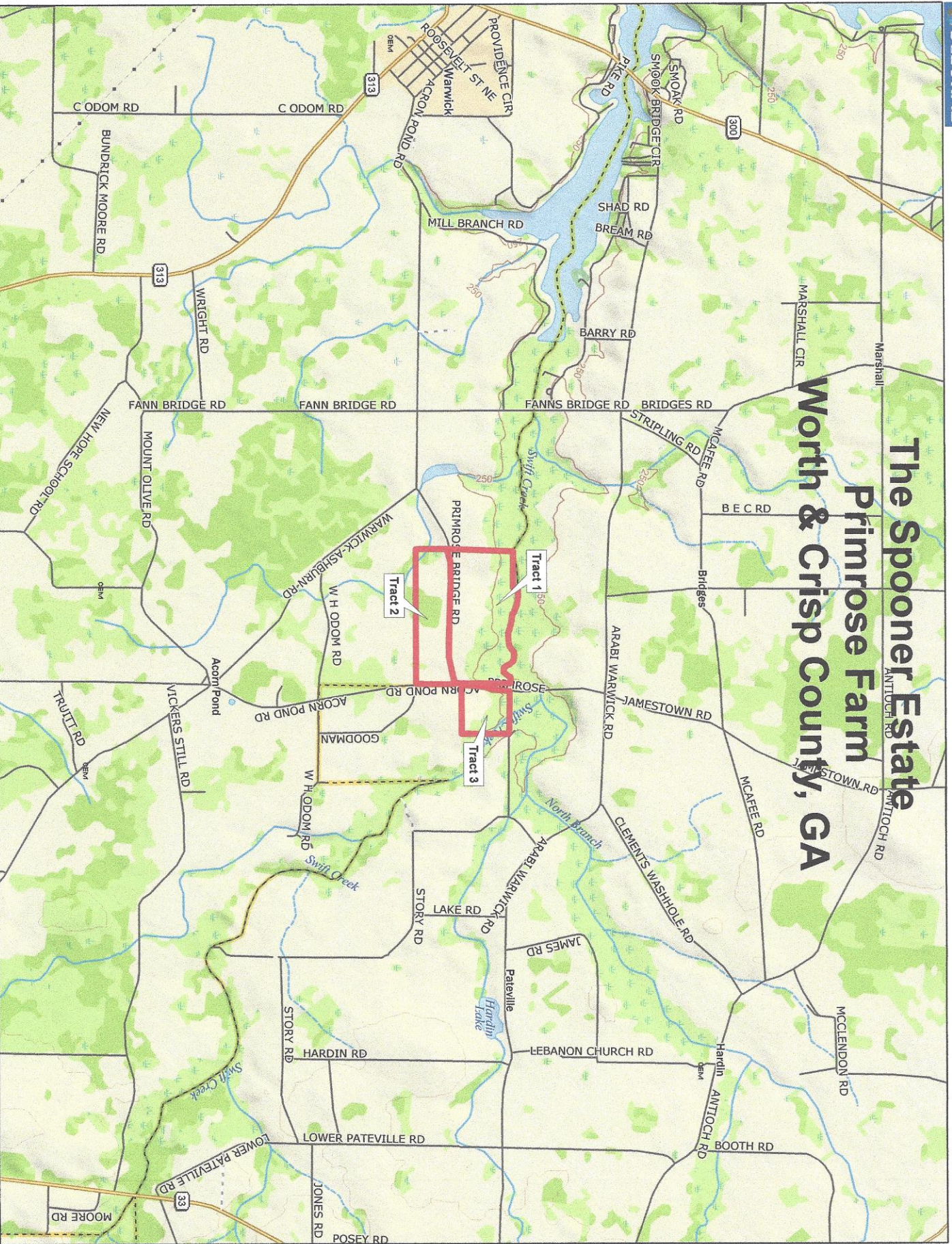
1. The timber appraiser assumes no responsibility for matters of a legal nature affecting the timber appraised or the title thereto, nor does the timber appraiser render any opinion as to the title, which is assumed to be good and marketable. The timber is appraised as though under responsible ownership.
2. Sketches in the report may show approximate dimensions and are included to assist the reader in visualizing the property. The timber appraiser has not made a survey of the property.
3. The timber appraiser is not required to give testimony or appear in court because of having made the appraisal with reference to the property in question.
4. Any distribution of the timber valuation in the report applies only under the existing program of utilization. The valuation of the timber as a pure asset should not be necessarily considered as the contributory value of the timber toward the value of the property in its entirety.
5. Information, estimates and opinions furnished to the timber appraiser, and contained in the report, were obtained from sources considered reliable and believed to be true and correct. However, the timber appraiser can assume no responsibility for the accuracy of such items furnished to the timber appraiser.
6. This report was prepared for the Client's use and the Client's sole discretion within the framework of the function stated in the report and its use for any other purpose is beyond the scope contemplated in the appraisal.
7. Where the timber appraisal conclusions are subject to satisfactory completion, repairs, or alterations, the appraisal report and value conclusion are contingent upon completion of the improvements in a workmanlike manner consistent with the plans, specification and/or scope contemplated in the appraisal.
8. Neither all nor any part of the contents of this report, especially any conclusions as to value, the identity of the appraiser or the firm with which he is connected, shall be disseminated to the public through advertising, public relations, news, sales, or other media without the prior written consent and approval of the author.
9. Acceptance of the report by the Clients constitutes acceptance of all assumptions and limiting conditions contained in the report.

## **Extraordinary Assumptions**

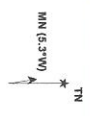
The estimates of timber volume for the subject area were determined from a timber inventory conducted by Timberland Services of Southwest GA LLC. A timber inventory is a small statistical sample of the area and is used to estimate the total volume of timber for the area. Timber volumes can vary by the timber product specifications used for an inventory. The timber product specifications used for this inventory are considered average for the area but can change or vary depending on utilization and particular specifications of different wood using mills. Timber volumes can also vary based on the utilization or grading skills of timber products by the harvesting (logging) operation. The estimate of timber volume for the subject should not be relied upon for the purpose other than for what it was designed for. Should the Clients or any

third party use the timber volume estimates for any other proposes, they do so at their own risk, and Timberland Services of Southwest GA assumes no responsibility for any injury to the client or any third party resulting from such use.

# The Spooner Estate Primrose Farm Worth & Crisp County, GA

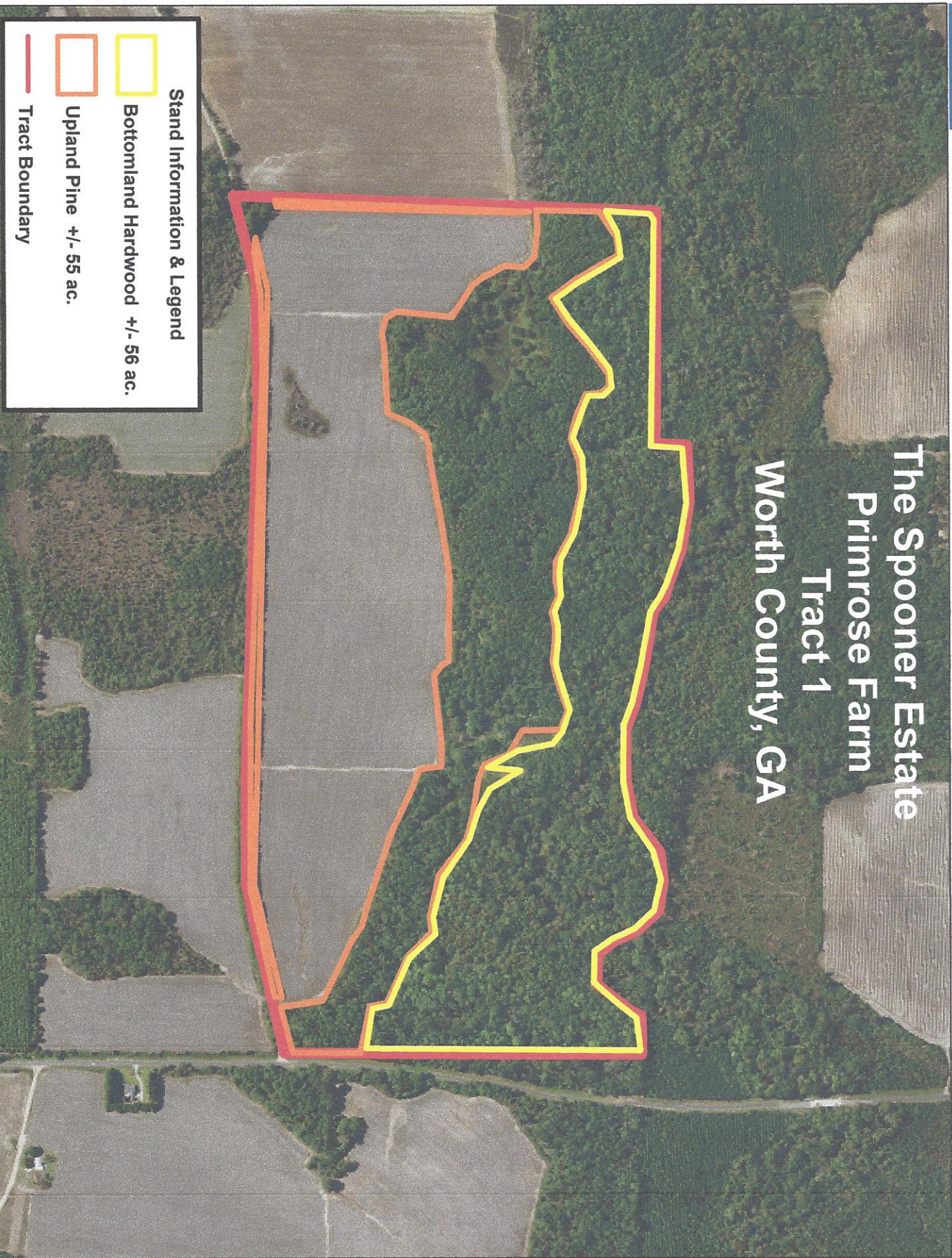


Data use subject to license.  
© Delorme, XMap® 7.  
www.delorme.com



Scale 1 : 50,000  
1" = 4,166.7 ft  
Data Zoom 12-0

# The Spooner Estate Primrose Farm Tract 1 Worth County, GA



### Stand Information & Legend

 Bottomland Hardwood +/- 56 ac.

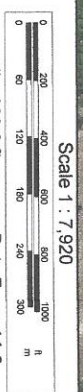
 Upland Pine +/- 55 ac.

 Tract Boundary

Data use subject to license.

© Delorme, XMap® 7.

www.delorme.com



**Tract Value Summary by Class, Group and Product**

Number of Stands:	2
# Plots/points:	54
Total Acres:	111
Sawlog Vol Units:	Scrib

Tract Name:	Spoonor Primrose Farm Tract 1
Location:	Worth County, GA
Report Date:	7/21/2020



**Pine ----> Pine Class**

Tract Total			
Product	Trees	PW Tons	Saw Tons
Pulpwood	4,011.1	2,837.3	
Chip-n-saw	517.8	34.9	260.5
Sawlog	2,866.6	788.8	2,913.2
Top Pulpwood	7,395.5	823.7	
Group Total	7,395.5	3,661.0	3,173.7

Per Acre			
BA	Trees	PW Tons	Saw Tons
	24.6	36.1	25.6
	2.9	4.7	0.3
	34.2	25.8	7.1
	61.7	66.6	33.0

Avg. Tree		
Tons/Tree	Bf/Tree	Avg DBH
0.7		11.2
0.5		62.8
1.0		171.6
0.2		
0.9		70.9
		13.0

\$/Ton		Value	
Tons	Stand Tot \$	Per Acre \$	
\$10.00	\$28,372.85	\$255.61	
\$20.00	\$5,209.63	\$46.93	
\$30.00	\$87,395.11	\$787.34	
\$6.00	\$4,942.49	\$44.53	
\$18.42	\$125,920.08	\$1,134.42	

**Pine Class**

Tract Total			
Product	Trees	PW Tons	Saw Tons
Class Total	7,395.5	3,661.0	3,173.7

Per Acre			
BA	Trees	PW Tons	Saw Tons
	61.7	66.6	33.0
		28.6	

Avg. Tree		
Tons/Tree	Bf/Tree	Avg DBH
0.9		70.9
		13.0

\$/Ton		Value	
Tons	Stand Tot \$	Per Acre \$	
\$18.42	\$125,920.08	\$1,134.42	

**Oak ----> Hardwood Class**

Tract Total			
Product	Trees	PW Tons	Saw Tons
Sawlog	473.0	0.0	849.0
Group Total	473.0	0.0	849.0

Per Acre			
BA	Trees	PW Tons	Saw Tons
	10.3	4.3	0.0
	10.3	4.3	0.0

Avg. Tree		
Tons/Tree	Bf/Tree	Avg DBH
1.8		287.1
1.8		287.1
		21.0

\$/Ton		Value	
Tons	Stand Tot \$	Per Acre \$	
\$40.00	\$33,958.57	\$305.93	
\$40.00	\$33,958.57	\$305.93	

**Hickory ----> Hardwood Class**

Tract Total			
Product	Trees	PW Tons	Saw Tons
Sawlog	73.0	0.0	101.0
Group Total	73.0	0.0	101.0

Per Acre			
BA	Trees	PW Tons	Saw Tons
	1.2	0.7	0.0
	1.2	0.7	0.0

Avg. Tree		
Tons/Tree	Bf/Tree	Avg DBH
1.4		211.9
1.4		211.9
		18.3

\$/Ton		Value	
Tons	Stand Tot \$	Per Acre \$	
\$30.00	\$3,029.21	\$27.29	
\$30.00	\$3,029.21	\$27.29	

**Gum ----> Hardwood Class**

Tract Total			
-------------	--	--	--

Per Acre			
----------	--	--	--

Avg. Tree		
-----------	--	--

Value	
Stand Tot \$	Per Acre \$

Product	Trees	PW Tons	Saw Tons	MBF
Sawlog	146.1	0.0	131.3	19.7
Group Total	146.1	0.0	131.3	19.7

BA	Trees	PW Tons	Saw Tons	BF
	1.8	1.3	0.0	1.2
	1.8	1.3	0.0	1.2

Tons/Tree	Bf/Tree	Avg DBH
0.9	134.9	15.7
0.9	134.9	15.7

\$/Ton	Tons
\$30.00	Tons
\$30.00	Tons

Stand Tot \$	Per Acre \$
\$3,939.48	\$35.49
\$3,939.48	\$35.49

**Poplar ----> Hardwood Class**

Tract Total				
Product	Trees	PW Tons	Saw Tons	MBF
Palletwood	24.3	0.0	12.1	1.8
Sawlog	402.5	0.0	578.2	113.4
Group Total	426.8	0.0	590.3	115.2

Per Acre				
BA	Trees	PW Tons	Saw Tons	BF
	0.2	0.2	0.0	0.1
	7.6	3.6	0.0	5.2
	7.8	3.8	0.0	5.3

Avg. Tree		
Tons/Tree	Bf/Tree	Avg DBH
0.5	75.7	12.0
1.4	281.8	19.6
1.4	270.0	19.2

\$/Ton	Tons
\$12.00	Tons
\$25.00	Tons
\$24.73	Tons

Value	
Stand Tot \$	Per Acre \$
\$145.43	\$1.31
\$14,455.66	\$130.23
\$14,601.09	\$131.54

**Misc. Hardwood ----> Hardwood Class**

Tract Total				
Product	Trees	PW Tons	Saw Tons	MBF
Pulpwood	4,842.2	2,670.8		
Palletwood	170.4	0.0	89.0	11.8
Sawlog	298.9	0.0	249.5	41.0
Group Total	5,311.5	2,670.8	338.5	52.7

Per Acre				
BA	Trees	PW Tons	Saw Tons	BF
	29.0	43.6	24.1	
	1.1	1.5	0.0	0.8
	3.4	2.7	0.0	2.2
	33.5	47.9	24.1	3.0

Avg. Tree		
Tons/Tree	Bf/Tree	Avg DBH
0.6		11.0
0.5	69.1	11.3
0.8	137.1	15.2
0.6	9.9	11.3

\$/Ton	Tons
\$5.00	Tons
\$12.00	Tons
\$30.00	Tons
\$7.28	Tons

Value	
Stand Tot \$	Per Acre \$
\$13,354.10	\$120.31
\$1,068.02	\$9.62
\$7,484.44	\$67.43
\$21,906.56	\$197.36

**Hardwood Class**

Tract Total				
Product	Trees	PW Tons	Saw Tons	MBF
Class Total	6,430.5	2,670.8	2,010.1	339.0

Per Acre				
BA	Trees	PW Tons	Saw Tons	BF
	54.5	57.9	24.1	18.1
				3,053.8

Avg. Tree		
Tons/Tree	Bf/Tree	Avg DBH
0.7	52.7	13.1

\$/Ton	Tons
\$16.54	Tons
\$77,434.92	
\$697.61	

Value	
Stand Tot \$	Per Acre \$
\$77,434.92	\$697.61

**Cypress ----> Cypress Class**

Tract Total				
Product	Trees	PW Tons	Saw Tons	MBF
Pulpwood	850.3	640.4		
Sawlog	389.6	0.0	414.1	73.3
Group Total	1,239.9	640.4	414.1	73.3

Per Acre				
BA	Trees	PW Tons	Saw Tons	BF
	6.1	7.7	5.8	
	5.5	3.5	0.0	3.7
	11.6	11.2	5.8	3.7

Avg. Tree		
Tons/Tree	Bf/Tree	Avg DBH
0.8		12.1
1.1	188.0	17.0
0.9	59.1	13.8

\$/Ton	Tons
\$0.00	Tons
\$30.00	Tons
\$11.78	Tons

Value	
Stand Tot \$	Per Acre \$
\$0.00	\$0.00
\$12,421.89	\$111.91
\$12,421.89	\$111.91

**All Species Groups**

Tract Total				
Product	Trees	PW Tons	Saw Tons	MBF
Grand Total	15,065.9	6,972.3	5,597.8	936.8

Per Acre				
BA	Trees	PW Tons	Saw Tons	BF
	127.9	135.7	62.8	50.4
				8,439.3

Avg. Tree		
Tons/Tree	Bf/Tree	Avg DBH
0.8	62.2	13.1

\$/Ton	Tons
\$17.17	Tons
\$215,776.88	
\$1,943.94	

Value	
Stand Tot \$	Per Acre \$
\$215,776.88	\$1,943.94

**Stand Value Summary by Class, Group and Product**

Sampling Method:	Plot	Tract Name:	Spooner Primrose Farm Tract 1
BAF / Plot Size:	0.1	Stand ID:	Bortomland Hardwood
Stand Acres:	56.0	Location:	Worth County, GA
Cruiser:	Timberland Services	Date Cruised:	7/21/2020
		Saw Volume Unit	Scrib



**Pine ---> Pine Class**

Stand Total				Per Acre				Avg. Tree				Value				
Product	Trees	PW Tons	Saw Tons	MBF	BA	Trees	PW Tons	Saw Tons	BF	Tons/Tree	Bf/Tree	Avg DBH	\$/Ton	Tons	Stand Tot \$	Per Acre \$
Pulpwood	267.8	199.8			3.8	4.8	3.6			0.7		12.1	\$10.00	Tons	\$1,997.51	\$35.67
Sawlog	389.6	104.6	435.0	74.5	9.6	7.0	1.9	7.8	1,330.2	1.1	191.2	15.9	\$30.00	Tons	\$13,049.27	\$233.02
Top_Pulpwood		104.6					1.9			0.3			\$6.00	Tons	\$627.82	\$11.21
<b>Group Total</b>	<b>657.4</b>	<b>304.4</b>	<b>435.0</b>	<b>74.5</b>	<b>13.4</b>	<b>11.7</b>	<b>5.4</b>	<b>7.8</b>	<b>1,330.2</b>	<b>1.1</b>	<b>113.3</b>	<b>14.5</b>	<b>\$21.20</b>	<b>Tons</b>	<b>\$15,674.60</b>	<b>\$279.90</b>

**Pine Class**

Stand Total				Per Acre				Avg. Tree				Value				
Product	Trees	PW Tons	Saw Tons	MBF	BA	Trees	PW Tons	Saw Tons	BF	Tons/Tree	Bf/Tree	Avg DBH	\$/Ton	Tons	Stand Tot \$	Per Acre \$
Class Total	657.4	304.4	435.0	74.5	13.4	11.7	5.4	7.8	1,330.2	1.1	113.3	14.5	\$21.20	Tons	\$15,674.60	\$279.90

**Oak ---> Hardwood Class**

Stand Total				Per Acre				Avg. Tree				Value				
Product	Trees	PW Tons	Saw Tons	MBF	BA	Trees	PW Tons	Saw Tons	BF	Tons/Tree	Bf/Tree	Avg DBH	\$/Ton	Tons	Stand Tot \$	Per Acre \$
Sawlog	462.6	0.0	832.1	133.1	19.8	8.3	0.0	14.9	2,376.5	1.8	287.7	20.9	\$40.00	Tons	\$33,283.79	\$594.35
<b>Group Total</b>	<b>462.6</b>	<b>0.0</b>	<b>832.1</b>	<b>133.1</b>	<b>19.8</b>	<b>8.3</b>	<b>0.0</b>	<b>14.9</b>	<b>2,376.5</b>	<b>1.8</b>	<b>287.7</b>	<b>20.9</b>	<b>\$40.00</b>	<b>Tons</b>	<b>\$33,283.79</b>	<b>\$594.35</b>

**Hickory ---> Hardwood Class**

Stand Total				Per Acre				Avg. Tree				Value				
Product	Trees	PW Tons	Saw Tons	MBF	BA	Trees	PW Tons	Saw Tons	BF	Tons/Tree	Bf/Tree	Avg DBH	\$/Ton	Tons	Stand Tot \$	Per Acre \$
Sawlog	73.0	0.0	101.0	15.5	2.4	1.3	0.0	1.8	276.3	1.4	211.9	18.3	\$30.00	Tons	\$3,029.21	\$54.09
<b>Group Total</b>	<b>73.0</b>	<b>0.0</b>	<b>101.0</b>	<b>15.5</b>	<b>2.4</b>	<b>1.3</b>	<b>0.0</b>	<b>1.8</b>	<b>276.3</b>	<b>1.4</b>	<b>211.9</b>	<b>18.3</b>	<b>\$30.00</b>	<b>Tons</b>	<b>\$3,029.21</b>	<b>\$54.09</b>

**Gum ---> Hardwood Class**

Stand Total				Per Acre				Avg. Tree				Value				
Product	Trees	PW Tons	Saw Tons	MBF	BA	Trees	PW Tons	Saw Tons	BF	Tons/Tree	Bf/Tree	Avg DBH	\$/Ton	Tons	Stand Tot \$	Per Acre \$
Product																



Sawlog	146.1	0.0	131.3	19.7
Group Total	146.1	0.0	131.3	19.7

	3.5	2.6	0.0	2.3	351.9
	3.5	2.6	0.0	2.3	351.9

	0.9	134.9	15.7
	0.9	134.9	15.7

\$30.00	Tons	\$3,939.48	\$70.35
\$30.00	Tons	\$3,939.48	\$70.35

		\$3,939.48	\$70.35
		\$3,939.48	\$70.35

**Poplar ----> Hardwood Class**

Stand Total				
Product	Trees	PW Tons	Saw Tons	MBF
Palletwood	24.3	0.0	12.1	1.8
Sawlog	365.2	0.0	525.5	103.2
Group Total	389.6	0.0	537.6	105.0

Per Acre				
BA	Trees	PW Tons	Saw Tons	BF
	0.3	0.4	0.0	0.2
	13.8	6.5	0.0	9.4
	14.1	7.0	0.0	9.6

Avg. Tree			
Tons/Tree	Bf/Tree	Avg DBH	
0.5	75.7	12.0	
1.4	282.5	19.7	
1.4	269.6	19.3	

\$/Ton	Tons	Stand Tot \$	Per Acre \$
\$12.00	Tons	\$145.43	\$2.60
\$25.00	Tons	\$13,136.37	\$224.58
\$24.71	Tons	\$13,281.80	\$237.18

		Stand Tot \$	Per Acre \$
		\$145.43	\$2.60
		\$13,136.37	\$224.58
		\$13,281.80	\$237.18

**Misc. Hardwood ----> Hardwood Class**

Stand Total				
Product	Trees	PW Tons	Saw Tons	MBF
Pulpwood	3,676.5	2,146.6		
Palletwood	170.4	0.0	89.0	11.8
Sawlog	219.1	0.0	167.0	27.3
Group Total	4,066.1	2,146.6	256.0	39.1

Per Acre				
BA	Trees	PW Tons	Saw Tons	BF
	45.5	65.7	38.3	
	2.1	3.0	0.0	1.6
	4.8	3.9	0.0	3.0
	52.5	72.6	38.3	4.6

Avg. Tree			
Tons/Tree	Bf/Tree	Avg DBH	
0.6		11.3	
0.5	69.1	11.3	
0.8	124.8	15.1	
0.6	9.6	11.5	

\$/Ton	Tons	Stand Tot \$	Per Acre \$
\$5.00	Tons	\$10,732.83	\$191.66
\$12.00	Tons	\$1,068.02	\$19.07
\$30.00	Tons	\$5,011.27	\$89.49
\$7.00	Tons	\$16,812.12	\$300.22

		Stand Tot \$	Per Acre \$
		\$10,732.83	\$191.66
		\$1,068.02	\$19.07
		\$5,011.27	\$89.49
		\$16,812.12	\$300.22

**Hardwood Class**

Stand Total				
Product	Trees	PW Tons	Saw Tons	MBF
Class Total	5,137.4	2,146.6	1,858.0	312.4

Per Acre				
BA	Trees	PW Tons	Saw Tons	BF
	92.2	91.7	38.3	33.2
				5,578.4

Avg. Tree			
Tons/Tree	Bf/Tree	Avg DBH	
0.8	60.8	13.6	

\$/Ton	Tons	Stand Tot \$	Per Acre \$
\$17.57	Tons	\$70,346.41	\$1,256.19

		Stand Tot \$	Per Acre \$
		\$70,346.41	\$1,256.19

**Cypress ----> Cypress Class**

Stand Total				
Product	Trees	PW Tons	Saw Tons	MBF
Pulpwood	827.8	601.6		
Sawlog	389.6	0.0	414.1	73.3
Group Total	1,217.4	601.6	414.1	73.3

Per Acre				
BA	Trees	PW Tons	Saw Tons	BF
	11.5	14.8	10.7	
	11.0	7.0	0.0	7.4
	22.5	21.7	10.7	7.4

Avg. Tree			
Tons/Tree	Bf/Tree	Avg DBH	
0.7		11.9	
1.1	188.0	17.0	
0.8	60.2	13.8	

\$/Ton	Tons	Stand Tot \$	Per Acre \$
\$0.00	Tons	\$0.00	\$0.00
\$30.00	Tons	\$12,421.89	\$221.82
\$12.23	Tons	\$12,421.89	\$221.82

		Stand Tot \$	Per Acre \$
		\$0.00	\$0.00
		\$12,421.89	\$221.82
		\$12,421.89	\$221.82

**All Species Groups**

Stand Total				
Product	Trees	PW Tons	Saw Tons	MBF
Grand Total	7,012.2	3,052.5	2,707.0	460.1

Per Acre				
BA	Trees	PW Tons	Saw Tons	BF
	128.1	125.2	54.5	48.3

Avg. Tree			
Tons/Tree	Bf/Tree	Avg DBH	
0.8	65.6	13.7	

\$/Ton	Tons	Stand Tot \$	Per Acre \$
\$17.09	Tons	\$98,442.90	\$1,757.91

		Stand Tot \$	Per Acre \$
		\$98,442.90	\$1,757.91

Sampling Method: Plot  
 BAF / Plot Size: 0.1  
 Stand Acres: 56.0  
 Cruiser: Timberland Services

Tract Name: Spooner Primrose Farm Tract 1  
 Stand ID: Bottomland Hardwood  
 Location: Worth County, GA  
 Date Cruised: 7/21/2020  
 Sawlog Vol Units: Scrib

Stand Summary by Class, Group, Product and Dbh



Pine ----> Pine Class

Stand Total					Per Acre					Avg. Tree					Avg. Heights				
DBH	Trees	PW/Tons	Saw Tons	MBF	BA	Trees	PW/Tons	Saw Tons	BF	Tons/Tree	BF/Tree	Hs	Hp	Hm	Hs	Hp	Hm		
Pulpwood	6	24.3	2.6		0.09	0.4	0.05	0.80	124.06	0.107	95.113	33.2	24.5	24.5					
	8	73.0	18.8		0.46	1.3	0.34	1.12	174.11	0.257	133.488	44.5	38.5	38.5					
	10	24.3	10.4		0.24	0.4	0.19	2.60	424.49	0.427	162.722	43.7	41.5	41.5					
	11	48.7	28.0		0.57	0.9	0.50	3.24	607.57	0.575	349.354	45.5	49.0	49.0					
	14	24.3	24.1		0.46	0.4	0.43			0.990		45.5	52.5	52.5					
	16	48.7	65.1		1.21	0.9	1.16			1.336		54.5	54.5	54.5					
	18	24.3	50.8		0.77	0.4	0.91			2.087		75.5	75.5	75.5					
<b>Pulpwood Total</b>	<b>267.8</b>	<b>199.8</b>			<b>3.80</b>	<b>4.8</b>	<b>3.57</b>			<b>1.137</b>		<b>47.0</b>	<b>47.0</b>	<b>47.0</b>					

Stand Total					Per Acre					Avg. Tree					Avg. Heights				
DBH	Trees	PW/Tons	Saw Tons	MBF	BA	Trees	PW/Tons	Saw Tons	BF	Tons/Tree	BF/Tree	Hs	Hp	Hm	Hs	Hp	Hm		
Sawlog	13	73.0	14.5	45.0	1.20	1.3	0.26	0.80	124.06	0.616	95.113	33.2	64.4	64.4					
	14	73.0	11.1	62.9	1.39	1.3	0.20	1.12	174.11	0.861	133.488	44.5	69.4	69.4					
	15	146.1	30.8	145.7	3.20	2.6	0.55	2.60	424.49	0.997	162.722	43.7	74.1	74.1					
	20	97.4	48.2	181.4	3.79	1.7	0.86	3.24	607.57	1.863	349.354	45.5	85.4	85.4					
<b>Sawlog Total</b>	<b>389.6</b>	<b>104.6</b>	<b>435.0</b>	<b>74.5</b>	<b>9.59</b>	<b>7.0</b>	<b>1.87</b>	<b>7.77</b>	<b>1330.24</b>	<b>1.117</b>	<b>191.222</b>	<b>42.3</b>	<b>74.2</b>	<b>74.2</b>					

Stand Total					Per Acre					Avg. Tree					Avg. Heights				
DBH	Trees	PW/Tons	Saw Tons	MBF	BA	Trees	PW/Tons	Saw Tons	BF	Tons/Tree	BF/Tree	Hs	Hp	Hm	Hs	Hp	Hm		
Merch Group Total	657.4	304.4	435.0	74.5	13.39	11.7	5.44	7.77	1330.24	1.125	113.317	42.3	63.1	63.1					

Pine Class

Stand Total					Per Acre					Avg. Tree					Avg. Heights				
DBH	Trees	PW/Tons	Saw Tons	MBF	BA	Trees	PW/Tons	Saw Tons	BF	Tons/Tree	BF/Tree	Hs	Hp	Hm	Hs	Hp	Hm		
Merch Class Total	657.4	304.4	435.0	74.5	13.39	11.7	5.44	7.77	1330.24	1.125	113.317	42.3	63.1	63.1					

Oak ----> Hardwood Class

Stand Total					Per Acre					Avg. Tree					Avg. Heights				
DBH	Trees	PW/Tons	Saw Tons	MBF	BA	Trees	PW/Tons	Saw Tons	BF	Tons/Tree	BF/Tree	Hs	Hp	Hm	Hs	Hp	Hm		
Sawlog	14	48.7	0.0	38.9	0.93	0.9	0.00	0.69	94.48	0.799	108.656	30.5	30.5	30.5					
	15	24.3	0.0	22.6	0.53	0.4	0.00	0.40	57.07	0.930	131.254	30.5	30.5	30.5					
	16	24.3	0.0	21.9	0.61	0.4	0.00	0.39	57.39	0.899	132.008	24.5	24.5	24.5					
	17	48.7	0.0	63.8	1.37	0.9	0.00	1.14	169.08	1.310	194.446	34.5	34.5	34.5					
	18	24.3	0.0	40.3	0.77	0.4	0.00	0.72	109.71	1.656	252.339	40.5	40.5	40.5					

19	48.7	0.0	77.4	12.0	1.71	0.9	0.00	1.38	214.69	1.590	246.889	33.5	33.5	33.5
22	48.7	0.0	117.6	19.2	2.30	0.9	0.00	2.10	342.68	2.415	394.078	39.0	39.0	39.0
23	48.7	0.0	86.2	14.0	2.51	0.9	0.00	1.54	249.68	1.770	287.133	23.0	23.0	23.0
24	48.7	0.0	118.3	19.6	2.73	0.9	0.00	2.11	350.16	2.430	402.683	31.5	31.5	31.5
25	48.7	0.0	86.3	14.0	2.96	0.9	0.00	1.54	250.08	1.772	287.593	18.5	18.5	18.5
26	24.3	0.0	81.5	13.9	1.60	0.4	0.00	1.46	247.89	3.349	570.139	38.5	38.5	38.5
27	24.3	0.0	77.2	13.1	1.73	0.4	0.00	1.38	233.54	3.172	537.150	32.5	32.5	32.5
<b>Sawlog Total</b>	<b>462.6</b>	<b>0.0</b>	<b>832.1</b>	<b>133.1</b>	<b>19.75</b>	<b>8.3</b>	<b>0.00</b>	<b>14.86</b>	<b>2376.45</b>	<b>1.799</b>	<b>287.676</b>	<b>30.9</b>	<b>30.9</b>	<b>30.9</b>

<b>Merch Group Total</b>	<b>DBH</b>	<b>Trees</b>	<b>PW Tons</b>	<b>Saw Tons</b>	<b>MBF</b>	<b>BA</b>	<b>Trees</b>	<b>PW Tons</b>	<b>Saw Tons</b>	<b>BF</b>	<b>Tons/Tree</b>	<b>BF/Tree</b>	<b>Hs</b>	<b>Hp</b>	<b>Hm</b>
		462.6	0.0	832.1	133.1	19.75	8.3	0.00	14.86	2376.45	1.799	287.676	30.9	30.9	30.9

**Hickory ----> Hardwood Class**

<b>Stand Total</b>															
<b>Sawlog</b>	DBH	Trees	PW Tons	Saw Tons	MBF	BA	Trees	PW Tons	Saw Tons	BF	Tons/Tree	BF/Tree	Hs	Hp	Hm
	15	24.3	0.0	28.8	4.0	0.53	0.4	0.00	0.51	71.70	1.184	164.916	42.5	42.5	42.5
	16	24.3	0.0	16.2	2.3	0.61	0.4	0.00	0.29	41.54	0.664	95.552	16.5	16.5	16.5
	23	24.3	0.0	56.0	9.1	1.25	0.4	0.00	1.00	163.09	2.299	375.098	32.5	32.5	32.5
<b>Sawlog Total</b>		<b>73.0</b>	<b>0.0</b>	<b>101.0</b>	<b>15.5</b>	<b>2.40</b>	<b>1.3</b>	<b>0.00</b>	<b>1.80</b>	<b>276.33</b>	<b>1.382</b>	<b>211.855</b>	<b>30.5</b>	<b>30.5</b>	<b>30.5</b>

<b>Merch Group Total</b>	<b>DBH</b>	<b>Trees</b>	<b>PW Tons</b>	<b>Saw Tons</b>	<b>MBF</b>	<b>BA</b>	<b>Trees</b>	<b>PW Tons</b>	<b>Saw Tons</b>	<b>BF</b>	<b>Tons/Tree</b>	<b>BF/Tree</b>	<b>Hs</b>	<b>Hp</b>	<b>Hm</b>
		73.0	0.0	101.0	15.5	2.40	1.3	0.00	1.80	276.33	1.382	211.855	30.5	30.5	30.5

**Gum ----> Hardwood Class**

<b>Stand Total</b>															
<b>Sawlog</b>	DBH	Trees	PW Tons	Saw Tons	MBF	BA	Trees	PW Tons	Saw Tons	BF	Tons/Tree	BF/Tree	Hs	Hp	Hm
	15	73.0	0.0	62.8	9.2	1.60	1.3	0.00	1.12	164.56	0.859	126.163	29.8	29.8	29.8
	16	48.7	0.0	51.2	7.8	1.21	0.9	0.00	0.91	139.50	1.051	160.426	32.5	32.5	32.5
	17	24.3	0.0	17.4	2.7	0.69	0.4	0.00	0.31	47.85	0.715	110.053	16.5	16.5	16.5
<b>Sawlog Total</b>		<b>146.1</b>	<b>0.0</b>	<b>131.3</b>	<b>19.7</b>	<b>3.50</b>	<b>2.6</b>	<b>0.00</b>	<b>2.34</b>	<b>351.91</b>	<b>0.899</b>	<b>134.899</b>	<b>28.5</b>	<b>28.5</b>	<b>28.5</b>

<b>Merch Group Total</b>	<b>DBH</b>	<b>Trees</b>	<b>PW Tons</b>	<b>Saw Tons</b>	<b>MBF</b>	<b>BA</b>	<b>Trees</b>	<b>PW Tons</b>	<b>Saw Tons</b>	<b>BF</b>	<b>Tons/Tree</b>	<b>BF/Tree</b>	<b>Hs</b>	<b>Hp</b>	<b>Hm</b>
		146.1	0.0	131.3	19.7	3.50	2.6	0.00	2.34	351.91	0.899	134.899	28.5	28.5	28.5

**Poplar ----> Hardwood Class**

<b>Stand Total</b>															
<b>Palletwood</b>	DBH	Trees	PW Tons	Saw Tons	MBF	BA	Trees	PW Tons	Saw Tons	BF	Tons/Tree	BF/Tree	Hs	Hp	Hm
	12	24.3	0.0	12.1	1.8	0.34	0.4	0.00	0.22	32.93	0.498	75.749	32.5	32.5	32.5
<b>Palletwood Total</b>		<b>24.3</b>	<b>0.0</b>	<b>12.1</b>	<b>1.8</b>	<b>0.34</b>	<b>0.4</b>	<b>0.00</b>	<b>0.22</b>	<b>32.93</b>	<b>0.498</b>	<b>75.749</b>	<b>32.5</b>	<b>32.5</b>	<b>32.5</b>

<b>Sawlog</b>	DBH	Trees	PW Tons	Saw Tons	MBF	BA	Trees	PW Tons	Saw Tons	BF	Tons/Tree	BF/Tree	Hs	Hp	Hm
	14	24.3	0.0	13.4	2.3	0.46	0.4	0.00	0.24	41.54	0.550	95.548	24.5	24.5	24.5

15	24.3	0.0	22.3	3.9	0.53	0.4	0.00	0.40	69.72	0.915	160.355	40.5	40.5	40.5
17	73.0	0.0	67.0	12.3	2.06	1.3	0.00	1.20	219.26	0.918	168.099	29.8	29.8	29.8
18	48.7	0.0	57.2	10.9	1.54	0.9	0.00	1.02	194.01	1.176	223.115	34.5	34.5	34.5
19	73.0	0.0	108.7	20.9	2.57	1.3	0.00	1.94	372.73	1.488	285.761	41.2	41.2	41.2
22	24.3	0.0	47.5	9.7	1.15	0.4	0.00	0.85	173.02	1.951	397.940	39.5	39.5	39.5
23	24.3	0.0	51.0	10.5	1.25	0.4	0.00	0.91	187.86	2.093	432.087	38.5	38.5	38.5
24	48.7	0.0	105.4	21.7	2.73	0.9	0.00	1.88	387.50	2.165	445.627	36.5	36.5	36.5
25	24.3	0.0	52.9	11.0	1.48	0.4	0.00	0.95	196.77	2.174	452.577	32.5	32.5	32.5
<b>Sawlog Total</b>	<b>365.2</b>	<b>0.0</b>	<b>525.5</b>	<b>103.2</b>	<b>13.78</b>	<b>6.5</b>	<b>0.00</b>	<b>9.38</b>	<b>1842.42</b>	<b>1.439</b>	<b>282.505</b>	<b>35.4</b>	<b>35.4</b>	<b>35.4</b>

<b>Merch Group Total</b>	<b>DBH</b>	<b>Trees</b>	<b>PW Tons</b>	<b>Saw Tons</b>	<b>MBF</b>	<b>BA</b>	<b>Trees</b>	<b>PW Tons</b>	<b>Saw Tons</b>	<b>BF</b>	<b>Tons/Tree</b>	<b>BF/Tree</b>	<b>Hs</b>	<b>Hp</b>	<b>Hm</b>
		389.6	0.0	537.6	105.0	14.12	7.0	0.00	9.60	1875.36	1.380	269.582	35.2	35.2	35.2

Misc. Hardwood ----> Hardwood Class

Stand Total

<b>Pulpwood</b>	<b>DBH</b>	<b>Trees</b>	<b>PW Tons</b>	<b>Saw Tons</b>	<b>MBF</b>	<b>BA</b>	<b>Trees</b>	<b>PW Tons</b>	<b>Saw Tons</b>	<b>BF</b>	<b>Tons/Tree</b>	<b>BF/Tree</b>	<b>Hs</b>	<b>Hp</b>	<b>Hm</b>
	5	24.3	1.8			0.06	0.4	0.03			0.076			24.5	24.5
	6	316.5	36.4			1.11	5.7	0.65			0.115			26.7	26.7
	7	511.3	89.2			2.44	9.1	1.59			0.174			31.2	31.2
	8	462.6	117.9			2.88	8.3	2.11			0.255			36.7	36.7
	9	389.6	137.7			3.07	7.0	2.46			0.354			41.9	41.9
	10	340.9	143.8			3.32	6.1	2.57			0.422			39.9	39.9
	11	389.6	219.3			4.59	7.0	3.92			0.563			45.5	45.5
	12	316.5	219.6			4.44	5.7	3.92			0.694			47.3	47.3
	13	121.7	99.9			2.00	2.2	1.78			0.820			48.3	48.3
	14	292.2	282.0			5.58	5.2	5.04			0.965			48.8	48.8
	15	146.1	154.8			3.20	2.6	2.76			1.060			45.0	45.0
	16	146.1	195.6			3.64	2.6	3.49			1.339			52.2	52.2
	17	24.3	32.0			0.69	0.4	0.57			1.315			42.5	42.5
	18	24.3	41.8			0.77	0.4	0.75			1.716			52.5	52.5
	19	48.7	87.4			1.71	0.9	1.56			1.795			48.0	48.0
	21	73.0	148.3			3.14	1.3	2.65			2.030			44.2	44.2
	23	24.3	63.2			1.25	0.4	1.13			2.596			46.5	46.5
	26	24.3	75.7			1.60	0.4	1.35			3.110			42.5	42.5
<b>Pulpwood Total</b>		<b>3,676.5</b>	<b>2,146.6</b>			<b>45.50</b>	<b>65.7</b>	<b>38.33</b>			<b>0.584</b>			<b>40.5</b>	<b>40.5</b>

Per Acre

<b>Palletwood</b>	<b>DBH</b>	<b>Trees</b>	<b>PW Tons</b>	<b>Saw Tons</b>	<b>MBF</b>	<b>BA</b>	<b>Trees</b>	<b>PW Tons</b>	<b>Saw Tons</b>	<b>BF</b>	<b>Tons/Tree</b>	<b>BF/Tree</b>	<b>Hs</b>	<b>Hp</b>	<b>Hm</b>
	11	121.7	0.0	60.7	7.8	1.43	2.2	0.00	1.08	138.99	0.499	63.936	38.1	38.1	38.1
	12	48.7	0.0	28.3	4.0	0.68	0.9	0.00	0.51	71.16	0.581	81.837	36.5	36.5	36.5
<b>Palletwood Total</b>		<b>170.4</b>	<b>0.0</b>	<b>89.0</b>	<b>11.8</b>	<b>2.12</b>	<b>3.0</b>	<b>0.00</b>	<b>1.59</b>	<b>210.15</b>	<b>0.522</b>	<b>69.050</b>	<b>37.6</b>	<b>37.6</b>	<b>37.6</b>

<b>Sawlog</b>	<b>DBH</b>	<b>Trees</b>	<b>PW Tons</b>	<b>Saw Tons</b>	<b>MBF</b>	<b>BA</b>	<b>Trees</b>	<b>PW Tons</b>	<b>Saw Tons</b>	<b>BF</b>	<b>Tons/Tree</b>	<b>BF/Tree</b>	<b>Hs</b>	<b>Hp</b>	<b>Hm</b>
	13	48.7	0.0	32.0	4.8	0.80	0.9	0.00	0.57	85.66	0.657	98.506	34.5	34.5	34.5
	14	48.7	0.0	25.1	4.0	0.93	0.9	0.00	0.45	71.75	0.515	82.510	20.5	20.5	20.5
	15	24.3	0.0	16.6	2.8	0.53	0.4	0.00	0.30	49.17	0.680	113.091	24.5	24.5	24.5
	16	48.7	0.0	53.4	8.8	1.21	0.9	0.00	0.95	157.98	1.098	181.674	39.5	39.5	39.5
	17	48.7	0.0	39.9	6.9	1.37	0.9	0.00	0.71	123.66	0.820	142.213	22.5	22.5	22.5
<b>Sawlog Total</b>		<b>219.1</b>	<b>0.0</b>	<b>167.0</b>	<b>27.3</b>	<b>4.85</b>	<b>3.9</b>	<b>0.00</b>	<b>2.98</b>	<b>488.22</b>	<b>0.762</b>	<b>124.766</b>	<b>28.7</b>	<b>28.7</b>	<b>28.7</b>

Merch Group Total	DBH	Trees	PW Tons	Saw Tons	MBF	BA	Trees	PW Tons	Saw Tons	BF	Tons/Tree	BF/Tree	Hs	Hp	Hm
		4,066.1	2,146.6	256.0	39.1	52.47	72.6	38.33	4.57	698.37	0.591	9.618	32.6	39.8	39.8

### Hardwood Class

Stand Total						Per Acre						Avg. Tree			Avg. Heights		
DBH	Trees	PW Tons	Saw Tons	MBF		BA	Trees	PW Tons	Saw Tons	BF	Tons/Tree	BF/Tree	Hs	Hp	Hm		
	5,137.4	2,146.6	1,958.0	312.4		92.23	91.7	38.33	33.18	5578.42	0.779	60.807	32.3	38.2	38.2		

### Cypress ---> Cypress Class

Stand Total						Per Acre						Avg. Tree			Avg. Heights		
DBH	Trees	PW Tons	Saw Tons	MBF		BA	Trees	PW Tons	Saw Tons	BF	Tons/Tree	BF/Tree	Hs	Hp	Hm		
Pulpwood	6	24.3	3.2			0.09	0.4	0.06			0.130			32.5	32.5		
	7	48.7	9.0			0.23	0.9	0.16			0.185			34.5	34.5		
	8	48.7	12.5			0.30	0.9	0.22			0.256			37.5	37.5		
	9	121.7	43.7			0.96	2.2	0.78			0.359			44.7	44.7		
	10	170.4	74.4			1.66	3.0	1.33			0.436			42.8	42.8		
	11	48.7	28.4			0.57	0.9	0.51			0.583			49.0	49.0		
	12	146.1	106.9			2.05	2.6	1.91			0.732			54.0	54.0		
	13	48.7	44.4			0.80	0.9	0.79			0.911			58.0	58.0		
	14	48.7	50.1			0.93	0.9	0.89			1.029			55.0	55.0		
	15	24.3	26.7			0.53	0.4	0.48			1.097			48.5	48.5		
	18	73.0	146.0			2.30	1.3	2.61			1.999			69.2	69.2		
	21	24.3	56.3			1.05	0.4	1.01			2.313			52.5	52.5		
Pulpwood Total		827.8	601.6			11.48	14.8	10.74			0.727			48.7	48.7		

Stand Total						Per Acre						Avg. Tree			Avg. Heights		
DBH	Trees	PW Tons	Saw Tons	MBF		BA	Trees	PW Tons	Saw Tons	BF	Tons/Tree	BF/Tree	Hs	Hp	Hm		
Sawlog	13	48.7	0.0	26.7	4.1	0.80	0.9	0.00	0.48	72.95	0.547	83.894	28.5	28.5	28.5		
	14	48.7	0.0	20.9	3.4	0.93	0.9	0.00	0.37	60.41	0.430	69.471	16.5	16.5	16.5		
	15	24.3	0.0	16.3	2.8	0.53	0.4	0.00	0.29	49.17	0.668	113.091	24.5	24.5	24.5		
	16	48.7	0.0	46.3	7.9	1.21	0.9	0.00	0.83	141.95	0.951	163.240	33.5	33.5	33.5		
	17	48.7	0.0	60.4	10.4	1.37	0.9	0.00	1.08	185.72	1.240	213.581	40.5	40.5	40.5		
	18	97.4	0.0	114.1	20.2	3.07	1.7	0.00	2.04	360.80	1.171	207.459	32.5	32.5	32.5		
	19	24.3	0.0	26.1	4.8	0.86	0.4	0.00	0.47	85.65	1.072	197.001	24.5	24.5	24.5		
	21	24.3	0.0	46.6	8.9	1.05	0.4	0.00	0.83	158.21	1.914	363.879	40.5	40.5	40.5		
	22	24.3	0.0	56.7	10.8	1.15	0.4	0.00	1.01	193.24	2.330	444.453	46.5	46.5	46.5		
Sawlog Total		389.6	0.0	414.1	73.3	10.97	7.0	0.00	7.39	1308.10	1.063	188.040	31.5	31.5	31.5		

Merch Group Total	DBH	Trees	PW Tons	Saw Tons	MBF	BA	Trees	PW Tons	Saw Tons	BF	Tons/Tree	BF/Tree	Hs	Hp	Hm
		1,217.4	601.6	414.1	73.3	22.45	21.7	10.74	7.39	1308.10	0.834	60.173	31.5	43.2	43.2

### All Species Groups

Stand Total	Per Acre	Avg. Tree	Avg. Heights

Merch Grand Total	DBH	Trees	PW/Tons	Saw Tons	MBF
		7,012.2	3,052.5	2,707.0	460.1

BA	Trees	PW/Tons	Saw Tons	BF
128.08	125.2	54.51	48.34	8216.76

Tons/Tree	BF/Tree
0.821	65.620

Hs	Hp	Hm
33.9	41.4	41.4

**Stand Value Summary by Class, Group and Product**



Sampling Method:	Point	Tract Name:	Spooner Primrose Farm Tract 1
BAF / Plot Size:	20	Stand ID:	Upland Pine
Stand Acres:	55.0	Location:	Worth County, GA
Cruiser:	Timberland Services	Date Cruised:	7/21/2020
		Saw Volume Unit	Scrib

**Pine ---> Pine Class**

Stand Total				Per Acre				Avg. Tree				Value				
Product	Trees	PW Tons	Saw Tons	MBF	BA	Trees	PW Tons	Saw Tons	BF	Tons/Tree	Bf/Tree	Avg DBH	\$/Ton	Tons	Stand Tot \$	Per Acre \$
Pulpwood	3,743.3	2,637.5			45.8	68.1	48.0			0.7		11.1	\$10.00	Tons	\$26,375.33	\$479.55
Chip-n-saw	517.8	34.9	260.5	32.5	5.8	9.4	0.6	4.7	590.8	0.5	62.8	10.6	\$20.00	Tons	\$5,209.63	\$94.72
Sawlog	2,477.1	684.2	2,478.2	417.5	59.4	45.0	12.4	45.1	7,591.8	1.0	168.6	15.5	\$30.00	Tons	\$74,345.84	\$1,351.74
Top_Pulpwood		719.1					13.1			0.2			\$6.00	Tons	\$4,314.67	\$78.45
<b>Group Total</b>	<b>6,738.1</b>	<b>3,356.6</b>	<b>2,738.7</b>	<b>450.0</b>	<b>111.0</b>	<b>122.5</b>	<b>61.0</b>	<b>49.8</b>	<b>8,182.6</b>	<b>0.9</b>	<b>66.8</b>	<b>12.9</b>	<b>\$18.09</b>	<b>Tons</b>	<b>\$110,245.47</b>	<b>\$2,004.46</b>

**Pine Class**

Stand Total				Per Acre				Avg. Tree				Value				
Product	Trees	PW Tons	Saw Tons	MBF	BA	Trees	PW Tons	Saw Tons	BF	Tons/Tree	Bf/Tree	Avg DBH	\$/Ton	Tons	Stand Tot \$	Per Acre \$
<b>Class Total</b>	<b>6,738.1</b>	<b>3,356.6</b>	<b>2,738.7</b>	<b>450.0</b>	<b>111.0</b>	<b>122.5</b>	<b>61.0</b>	<b>49.8</b>	<b>8,182.6</b>	<b>0.9</b>	<b>66.8</b>	<b>12.9</b>	<b>\$18.09</b>	<b>Tons</b>	<b>\$110,245.47</b>	<b>\$2,004.46</b>

**Oak ---> Hardwood Class**

Stand Total				Per Acre				Avg. Tree				Value				
Product	Trees	PW Tons	Saw Tons	MBF	BA	Trees	PW Tons	Saw Tons	BF	Tons/Tree	Bf/Tree	Avg DBH	\$/Ton	Tons	Stand Tot \$	Per Acre \$
Sawlog	10.4	0.0	16.9	2.7	0.6	0.2	0.0	0.3	49.4	1.6	261.1	25.0	\$40.00	Tons	\$674.78	\$12.27
<b>Group Total</b>	<b>10.4</b>	<b>0.0</b>	<b>16.9</b>	<b>2.7</b>	<b>0.6</b>	<b>0.2</b>	<b>0.0</b>	<b>0.3</b>	<b>49.4</b>	<b>1.6</b>	<b>261.1</b>	<b>25.0</b>	<b>\$40.00</b>	<b>Tons</b>	<b>\$674.78</b>	<b>\$12.27</b>

**Poplar ---> Hardwood Class**

Stand Total				Per Acre				Avg. Tree				Value				
Product	Trees	PW Tons	Saw Tons	MBF	BA	Trees	PW Tons	Saw Tons	BF	Tons/Tree	Bf/Tree	Avg DBH	\$/Ton	Tons	Stand Tot \$	Per Acre \$
Sawlog	37.3	0.0	52.8	10.2	1.3	0.7	0.0	1.0	185.9	1.4	274.4	18.7	\$25.00	Tons	\$1,319.29	\$23.99
<b>Group Total</b>	<b>37.3</b>	<b>0.0</b>	<b>52.8</b>	<b>10.2</b>	<b>1.3</b>	<b>0.7</b>	<b>0.0</b>	<b>1.0</b>	<b>185.9</b>	<b>1.4</b>	<b>274.4</b>	<b>18.7</b>	<b>\$25.00</b>	<b>Tons</b>	<b>\$1,319.29</b>	<b>\$23.99</b>

**Misc. Hardwood ---> Hardwood Class**

Stand Total				Per Acre				Avg. Tree				Value				
Product	Trees	PW Tons	Saw Tons	MBF	BA	Trees	PW Tons	Saw Tons	BF	Tons/Tree	Bf/Tree	Avg DBH	\$/Ton	Tons	Stand Tot \$	Per Acre \$
<b>Stand Total</b>																

Product	Trees	PW Tons	Saw Tons	MBF
Pulpwood	1,165.6	524.3		
Sawlog	79.7	0.0	82.4	13.6
<b>Group Total</b>	<b>1,245.4</b>	<b>524.3</b>	<b>82.4</b>	<b>13.6</b>

BA	Trees	PW Tons	Saw Tons	BF
	12.3	21.2	9.5	
	1.9	1.4	0.0	1.5
	14.2	22.6	9.5	1.5
				247.8

Tons/tree	Bf/tree	Avg DBH
0.4		10.3
1.0	170.9	15.6
0.5	10.9	10.7

\$/Ton	Tons
\$5.00	Tons
\$30.00	Tons
\$8.40	Tons

Stand Tot \$	Per Acre \$
\$2,621.27	\$47.66
\$2,473.18	\$44.97
\$5,094.44	\$92.63

**Hardwood Class**

Stand Total				
Product	Trees	PW Tons	Saw Tons	MBF
<b>Class Total</b>	<b>1,293.1</b>	<b>524.3</b>	<b>152.1</b>	<b>26.6</b>

Per Acre				
BA	Trees	PW Tons	Saw Tons	BF
	16.1	23.5	9.5	2.8
				483.2

Avg. Tree			
Tons/tree	Bf/tree	Avg DBH	
0.5	20.6	11.2	

\$/Ton	Tons
\$10.48	Tons

Value	
Stand Tot \$	Per Acre \$
\$7,088.51	\$128.88

**Cypress ---> Cypress Class**

Stand Total				
Product	Trees	PW Tons	Saw Tons	MBF
<b>Group Total</b>	<b>22.5</b>	<b>38.9</b>	<b>0.0</b>	<b>0.0</b>

Per Acre				
BA	Trees	PW Tons	Saw Tons	BF
	0.6	0.4	0.7	
	0.6	0.4	0.7	
				0.0

Avg. Tree			
Tons/tree	Bf/tree	Avg DBH	
1.7		17.0	
1.7	0.0	17.0	

\$/Ton	Tons
\$0.00	Tons
\$0.00	Tons

Value	
Stand Tot \$	Per Acre \$
\$0.00	\$0.00
\$0.00	\$0.00

**All Species Groups**

Stand Total				
Product	Trees	PW Tons	Saw Tons	MBF
<b>Grand Total</b>	<b>8,053.7</b>	<b>3,919.8</b>	<b>2,890.8</b>	<b>476.6</b>

Per Acre				
BA	Trees	PW Tons	Saw Tons	BF
	127.7	146.4	71.3	52.6
				8,665.8

Avg. Tree			
Tons/tree	Bf/tree	Avg DBH	
0.8	59.2	12.6	

\$/Ton	Tons
\$17.23	Tons

Value	
Stand Tot \$	Per Acre \$
\$117,333.98	\$2,133.35



### Stand Summary by Class, Group, Product and Doh

Sampling Method:	Point
BAF / Plot Size:	20
Stand Acres:	55.0
Cruiser:	Timberland Services

Tract Name:	Spooner Primrose Farm Tract 1
Stand ID:	Upland Pine
Location:	Worth County, GA
Date Cruised:	7/21/2020
Sawlog Vol Units:	Scrib



#### Pine ----> Pine Class

Stand Total					Per Acre					Avg. Tree					Avg. Heights				
DBH	Trees	PW/Tons	Saw Tons	MBF	BA	Trees	PW/Tons	Saw Tons	BF	Tons/Tree	BF/Tree	Hs	Hp	Hm	Hs	Hp	Hm		
Pulpwood	5	520.5	46.3		1.29	9.5	0.84			0.089			33.5	33.5					
	7	398.3	102.6		1.94	7.2	1.87			0.258			63.8	63.8					
	8	508.3	184.2		3.23	9.2	3.35			0.362			71.3	71.3					
	9	562.2	264.2		4.52	10.2	4.80			0.470			73.1	73.1					
	10	260.2	147.7		2.58	4.7	2.69			0.568			69.3	69.3					
	11	483.9	368.5		5.81	8.8	6.70			0.762			80.8	80.8					
	12	90.4	83.2		1.29	1.6	1.51			0.921			82.0	82.0					
	13	154.0	163.4		2.58	2.8	2.97			1.061			78.0	78.0					
	14	232.4	292.5		4.52	4.2	5.32			1.259			79.8	79.8					
	15	86.7	127.1		1.94	1.6	2.31			1.466			80.5	80.5					
	16	25.4	43.3		0.65	0.5	0.79			1.706			82.5	82.5					
	17	67.5	125.4		1.94	1.2	2.28			1.856			77.2	77.2					
	18	180.7	311.3		5.81	3.3	5.66			1.723			57.1	57.1					
	19	54.1	107.1		1.94	1.0	1.95			1.981			59.8	59.8					
	20	32.5	61.5		1.29	0.6	1.12			1.889			47.5	47.5					
	21	14.8	27.9		0.65	0.3	0.51			1.893			40.5	40.5					
	22	26.9	61.3		1.29	0.5	1.11			2.280			46.0	46.0					
	23	12.3	30.5		0.65	0.2	0.55			2.479			45.5	45.5					
	24	22.6	57.5		1.29	0.4	1.05			2.547			42.0	42.0					
	26	9.6	32.1		0.65	0.2	0.58			3.333			48.5	48.5					
<b>Pulpwood Total</b>		<b>3,743.3</b>	<b>2,637.5</b>		<b>45.81</b>	<b>68.1</b>	<b>47.96</b>			<b>0.897</b>			<b>66.4</b>	<b>66.4</b>					

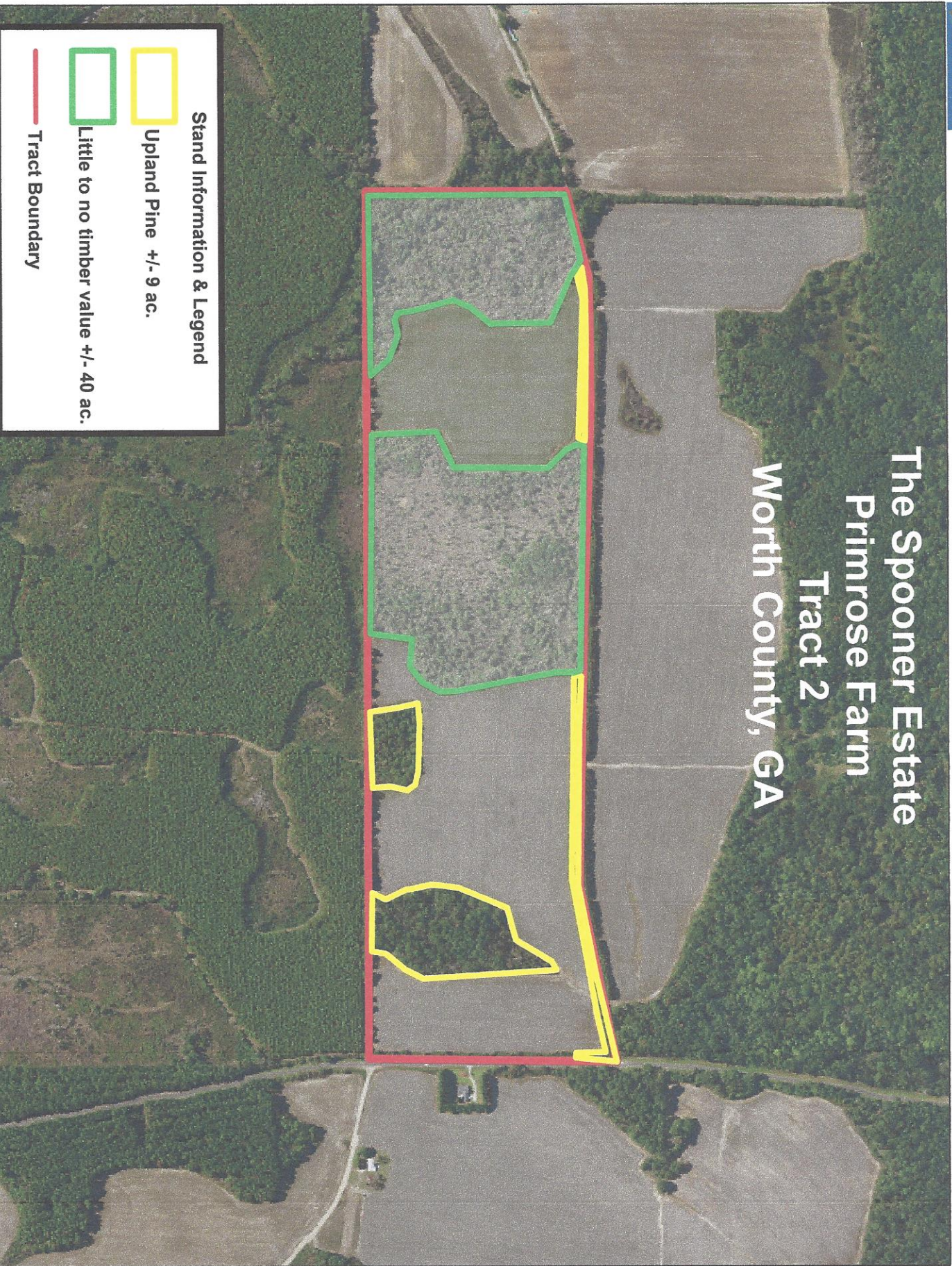
DBH	Trees	PW/Tons	Saw Tons	MBF	BA	Trees	PW/Tons	Saw Tons	BF	Tons/Tree	BF/Tree	Hs	Hp	Hm
Chip-n-saw	10	195.2	9.5	85.2	9.9	1.94	3.5	0.17	1.55	0.436	50.891	43.2	57.7	57.7
	11	322.6	25.4	175.3	22.6	3.87	5.9	0.46	3.19	0.543	69.936	44.8	66.3	66.3
<b>Chip-n-saw Total</b>		<b>517.8</b>	<b>34.9</b>	<b>260.5</b>	<b>32.5</b>	<b>5.81</b>	<b>9.4</b>	<b>0.63</b>	<b>4.74</b>	<b>0.503</b>	<b>62.757</b>	<b>44.2</b>	<b>63.0</b>	<b>63.0</b>

DBH	Trees	PW/Tons	Saw Tons	MBF	BA	Trees	PW/Tons	Saw Tons	BF	Tons/Tree	BF/Tree	Hs	Hp	Hm
Sawlog	12	361.4	38.5	233.6	32.1	5.16	6.6	0.70	4.25	0.646	88.739	46.5	66.5	66.5
	13	538.9	94.0	371.7	56.4	9.03	9.8	1.71	6.76	0.690	104.713	38.9	68.7	68.7
	14	431.5	105.5	317.1	50.5	8.39	7.8	1.92	5.76	0.735	116.931	35.0	67.7	67.7
	15	173.5	43.8	151.5	25.0	3.87	3.2	0.80	2.75	0.873	143.966	36.7	68.5	68.5
	16	279.5	69.9	329.8	55.9	7.10	5.1	1.27	6.00	1.180	199.811	45.8	78.2	78.2
	17	180.1	62.6	208.3	36.6	5.16	3.3	1.14	3.79	1.157	203.006	37.8	73.0	73.0
	18	160.6	62.4	222.4	39.8	5.16	2.9	1.13	4.04	1.384	247.590	41.5	77.6	77.6
	19	144.2	59.7	234.6	42.8	5.16	2.6	1.09	4.27	1.627	296.560	44.5	80.7	80.7
	20	32.5	23.2	42.8	8.0	1.29	0.6	0.42	0.78	1.315	245.134	29.0	72.7	72.7





# The Spooner Estate Primrose Farm Tract 2 Worth County, GA



**Stand Information & Legend**

-  Upland Pine +/- 9 ac.
-  Little to no timber value +/- 40 ac.
-  Tract Boundary

Data use subject to license.

© Delorme. XMap® 7.

www.delorme.com



Tract Value Summary by Class, Group and Product

Number of Stands:	1
# Plots/points:	6
Total Acres:	9
Sawlog Vol Units:	Scrib

Tract Name:	Spooner Primrose Farm Tract 2
Location:	Worth County, GA
Report Date:	7/21/2020



Pine ----> Pine Class

Tract Total			
Product	Trees	PW Tons	Saw Tons
Pulpwood	105.0	76.2	
Chip-n-saw	15.0	1.0	6.4
Sawlog	120.0	79.6	147.7
Top_Pulpwood		80.7	
Group Total	240.0	156.8	154.1

Per Acre			
BA	Trees	PW Tons	Saw Tons
	9.1	11.7	8.5
	0.9	1.7	0.1
	29.7	13.3	8.8
		9.0	
	39.7	26.7	17.4

Avg. Tree			
Tons/Tree	Bf/Tree	Avg DBH	
0.7		12.0	
0.4		51.0	10.0
1.2		226.9	20.2
0.6			
1.3		116.6	16.5

Value			
\$/Ton	Tons	Stand Tot \$	Per Acre \$
\$10.00	Tons	\$761.67	\$84.63
\$20.00	Tons	\$127.95	\$14.22
\$30.00	Tons	\$4,430.94	\$492.33
\$6.00	Tons	\$483.96	\$53.77
\$18.67	Tons	\$5,804.53	\$644.95

Oak ----> Hardwood Class

Tract Total			
Product	Trees	PW Tons	Saw Tons
Sawlog	15.0	0.0	11.2
Group Total	15.0	0.0	11.2

Per Acre			
BA	Trees	PW Tons	Saw Tons
	2.6	1.7	0.0
	2.6	1.7	0.0
		0.0	1.2
			1.2
			183.4

Avg. Tree			
Tons/Tree	Bf/Tree	Avg DBH	
0.7		110.1	17.0
0.7		110.1	17.0

Value			
\$/Ton	Tons	Stand Tot \$	Per Acre \$
\$40.00	Tons	\$449.62	\$49.96
\$40.00	Tons	\$449.62	\$49.96

Gum ----> Hardwood Class

Tract Total			
Product	Trees	PW Tons	Saw Tons
Sawlog	15.0	0.0	7.3
Group Total	15.0	0.0	7.3

Per Acre			
BA	Trees	PW Tons	Saw Tons
	1.8	1.7	0.0
	1.8	1.7	0.0
		0.0	0.8
			0.8
			115.8

Avg. Tree			
Tons/Tree	Bf/Tree	Avg DBH	
0.5		69.5	14.0
0.5		69.5	14.0

Value			
\$/Ton	Tons	Stand Tot \$	Per Acre \$
\$30.00	Tons	\$218.15	\$24.24
\$30.00	Tons	\$218.15	\$24.24

Misc. Hardwood ----> Hardwood Class

Tract Total			
Product	Trees	PW Tons	Saw Tons
Pulpwood	480.0	269.1	
Sawlog	60.0	0.0	44.0
Group Total	540.0	269.1	44.0

Per Acre			
BA	Trees	PW Tons	Saw Tons
	41.9	53.3	29.9
	8.2	6.7	0.0
	50.1	60.0	29.9
			4.9
			4.9
			796.1

Avg. Tree			
Tons/Tree	Bf/Tree	Avg DBH	
0.6		12.0	
0.7		119.4	15.0
0.6		13.3	12.4

Value			
\$/Ton	Tons	Stand Tot \$	Per Acre \$
\$5.00	Tons	\$1,345.69	\$149.52
\$30.00	Tons	\$1,320.33	\$146.70
\$8.51	Tons	\$2,666.02	\$296.22

Hardwood Class

Tract Total				
Product	Trees	PW Tons	Saw Tons	MBF
Class Total	570.0	269.1	62.5	9.9

Per Acre				
BA	Trees	PW Tons	Saw Tons	BF
54.5	63.3	29.9	6.9	1,095.3

Avg. Tree		
Tons/Tree	Bf/Tree	Avg DBH
0.6	17.3	12.6

Value			
\$/Ton	Stand Tot \$	Per Acre \$	
\$10.05	Tons	\$3,333.79	\$370.42

**All Species Groups**

Tract Total				
Product	Trees	PW Tons	Saw Tons	MBF
Grand Total	810.0	425.0	216.6	37.8

Per Acre				
BA	Trees	PW Tons	Saw Tons	BF
94.2	90.0	47.3	24.1	4,205.4

Avg. Tree		
Tons/Tree	Bf/Tree	Avg DBH
0.8	46.7	13.9

Value			
\$/Ton	Stand Tot \$	Per Acre \$	
\$14.22	Tons	\$9,138.32	\$1,015.37

Stand Summary by Class, Group, Product and Dbh

Sampling Method:	Plot
BAF / Plot Size:	0.1
Stand Acres:	9.0
Cruiser:	Timberland Services

Tract Name:	Spooner Primrose Farm Tract 2
Stand ID:	Upland Pine
Location:	Worth County, GA
Date Cruised:	7/21/2020
Sawlog Vol Units:	Scrib



Pine ----> Pine Class

Stand Total					Per Acre					Avg. Tree			Avg. Heights		
DBH	Trees	PW Tons	Saw Tons	MBF	BA	Trees	PW Tons	Saw Tons	BF	Tons/Tree	BF/Tree	Hs	Hp	Hm	
Pulpwood	7	15.0	2.9		0.45	1.7	0.33			0.196			38.5	38.5	
	8	15.0	4.2		0.58	1.7	0.46			0.278			43.5	43.5	
	9	15.0	4.4		0.74	1.7	0.49			0.293			32.5	32.5	
	10	15.0	4.4		0.91	1.7	0.49			0.296			24.5	24.5	
	14	15.0	18.3		1.78	1.7	2.04			1.222			75.5	75.5	
	16	30.0	41.9		4.65	3.3	4.66			1.397			61.0	61.0	
<b>Pulpwood Total</b>		<b>105.0</b>	<b>76.2</b>		<b>9.11</b>	<b>11.7</b>	<b>8.46</b>			<b>1.494</b>			<b>48.1</b>	<b>48.1</b>	

Stand Total					Per Acre					Avg. Tree			Avg. Heights		
DBH	Trees	PW Tons	Saw Tons	MBF	BA	Trees	PW Tons	Saw Tons	BF	Tons/Tree	BF/Tree	Hs	Hp	Hm	
Chip-n-saw	10	15.0	1.0	6.4	0.91	1.7	0.11	0.71	84.99	0.427	50.995	41.5	62.4	62.4	
Chip-n-saw Total		<b>15.0</b>	<b>1.0</b>	<b>6.4</b>	<b>0.91</b>	<b>1.7</b>	<b>0.11</b>	<b>0.71</b>	<b>84.99</b>	<b>0.427</b>	<b>50.995</b>	<b>41.5</b>	<b>62.4</b>	<b>62.4</b>	

Stand Total					Per Acre					Avg. Tree			Avg. Heights		
DBH	Trees	PW Tons	Saw Tons	MBF	BA	Trees	PW Tons	Saw Tons	BF	Tons/Tree	BF/Tree	Hs	Hp	Hm	
Sawlog	16	15.0	4.4	16.9	2.33	1.7	0.49	1.88	324.52	1.130	194.713	42.5	78.4	78.4	
	17	15.0	6.4	15.8	2.63	1.7	0.72	1.75	309.15	1.053	185.492	32.5	72.3	72.3	
	18	15.0	10.7	10.7	2.95	1.7	1.19	1.19	209.73	0.715	125.838	16.5	61.4	61.4	
	19	15.0	7.9	21.5	3.28	1.7	0.88	2.39	443.73	1.434	266.241	36.5	77.7	77.7	
	20	15.0	9.5	21.9	3.64	1.7	1.05	2.43	454.27	1.459	272.564	32.5	75.1	75.1	
	22	15.0	10.1	18.9	4.40	1.7	1.12	2.10	395.83	1.261	237.499	20.5	55.9	55.9	
	23	15.0	17.5	17.5	4.81	1.7	1.95	1.95	363.39	1.168	218.033	16.5	63.1	63.1	
	25	15.0	13.1	24.4	5.68	1.7	1.45	2.71	524.45	1.628	314.669	20.5	56.6	56.6	
<b>Sawlog Total</b>		<b>120.0</b>	<b>79.6</b>	<b>147.7</b>	<b>29.71</b>	<b>13.3</b>	<b>8.85</b>	<b>16.41</b>	<b>3025.08</b>	<b>1.231</b>	<b>226.881</b>	<b>27.3</b>	<b>67.6</b>	<b>67.6</b>	

Stand Total					Per Acre					Avg. Tree			Avg. Heights		
DBH	Trees	PW Tons	Saw Tons	MBF	BA	Trees	PW Tons	Saw Tons	BF	Tons/Tree	BF/Tree	Hs	Hp	Hm	
Merch Group Total		<b>240.0</b>	<b>156.8</b>	<b>154.1</b>	<b>39.72</b>	<b>26.7</b>	<b>17.43</b>	<b>17.12</b>	<b>3110.07</b>	<b>1.296</b>	<b>116.628</b>	<b>28.8</b>	<b>58.7</b>	<b>58.7</b>	

Pine Class

Stand Total					Per Acre					Avg. Tree			Avg. Heights		
DBH	Trees	PW Tons	Saw Tons	MBF	BA	Trees	PW Tons	Saw Tons	BF	Tons/Tree	BF/Tree	Hs	Hp	Hm	
Merch Class Total		<b>240.0</b>	<b>156.8</b>	<b>154.1</b>	<b>39.72</b>	<b>26.7</b>	<b>17.43</b>	<b>17.12</b>	<b>3110.07</b>	<b>1.296</b>	<b>116.628</b>	<b>28.8</b>	<b>58.7</b>	<b>58.7</b>	

Oak ----> Hardwood Class

Stand Total					Per Acre					Avg. Tree			Avg. Heights		
DBH	Trees	PW Tons	Saw Tons	MBF	BA	Trees	PW Tons	Saw Tons	BF	Tons/Tree	BF/Tree	Hs	Hp	Hm	
Merch Class Total		<b>240.0</b>	<b>156.8</b>	<b>154.1</b>	<b>39.72</b>	<b>26.7</b>	<b>17.43</b>	<b>17.12</b>	<b>3110.07</b>	<b>1.296</b>	<b>116.628</b>	<b>28.8</b>	<b>58.7</b>	<b>58.7</b>	

Stand Total					Per Acre					Avg. Tree			Avg. Heights		
DBH	Trees	PW/Tons	Saw/Tons	MBF	BA	Trees	PW/Tons	Saw/Tons	BF	Tons/Tree	BF/Tree	Hs	Hp	Hm	
Sawlog	17	15.0	0.0	11.2	1.7	1.7	0.00	1.25	183.42	0.749	110.053	16.5	16.5	16.5	
Sawlog Total	15.0	0.0	11.2	1.7	2.63	1.7	0.00	1.25	183.42	0.749	110.053	16.5	16.5	16.5	

Stand Total					Per Acre					Avg. Tree			Avg. Heights		
DBH	Trees	PW/Tons	Saw/Tons	MBF	BA	Trees	PW/Tons	Saw/Tons	BF	Tons/Tree	BF/Tree	Hs	Hp	Hm	
Merch Group Total	15.0	0.0	11.2	1.7	2.63	1.7	0.00	1.25	183.42	0.749	110.053	16.5	16.5	16.5	

**Gum ----> Hardwood Class**

Stand Total					Per Acre					Avg. Tree			Avg. Heights		
DBH	Trees	PW/Tons	Saw/Tons	MBF	BA	Trees	PW/Tons	Saw/Tons	BF	Tons/Tree	BF/Tree	Hs	Hp	Hm	
Sawlog	14	15.0	0.0	7.3	1.0	1.78	1.7	0.00	0.81	115.79	69.471	16.5	16.5	16.5	
Sawlog Total	15.0	0.0	7.3	1.0	1.78	1.7	0.00	0.81	115.79	0.485	69.471	16.5	16.5	16.5	

Stand Total					Per Acre					Avg. Tree			Avg. Heights		
DBH	Trees	PW/Tons	Saw/Tons	MBF	BA	Trees	PW/Tons	Saw/Tons	BF	Tons/Tree	BF/Tree	Hs	Hp	Hm	
Merch Group Total	15.0	0.0	7.3	1.0	1.78	1.7	0.00	0.81	115.79	0.485	69.471	16.5	16.5	16.5	

**Misc. Hardwood ----> Hardwood Class**

Stand Total					Per Acre					Avg. Tree			Avg. Heights		
DBH	Trees	PW/Tons	Saw/Tons	MBF	BA	Trees	PW/Tons	Saw/Tons	BF	Tons/Tree	BF/Tree	Hs	Hp	Hm	
Pulpwood	6	30.0	3.3		0.65	3.3	0.36			0.109		24.5	24.5	24.5	
	7	15.0	2.2		0.45	1.7	0.25			0.148		24.5	24.5	24.5	
	8	75.0	16.9		2.91	8.3	1.88			0.225		30.5	30.5	30.5	
	9	30.0	10.0		1.47	3.3	1.11			0.332		38.0	38.0	38.0	
	10	30.0	10.8		1.82	3.3	1.20			0.360		31.5	31.5	31.5	
	11	75.0	39.1		5.50	8.3	4.34			0.521		40.3	40.3	40.3	
	12	45.0	26.0		3.93	5.0	2.89			0.578		36.2	36.2	36.2	
	13	45.0	30.3		4.61	5.0	3.37			0.674		36.2	36.2	36.2	
	14	45.0	31.7		5.35	5.0	3.52			0.704		31.8	31.8	31.8	
	15	15.0	15.3		2.05	1.7	1.70			1.020		42.5	42.5	42.5	
	16	15.0	16.8		2.33	1.7	1.87			1.123		40.5	40.5	40.5	
	17	45.0	52.1		7.88	5.0	5.79			1.158		35.8	35.8	35.8	
	18	15.0	14.7		2.95	1.7	1.63			0.979		24.5	24.5	24.5	
Pulpwood Total	480.0	269.1			41.88	53.3	29.90			0.561		34.2	34.2	34.2	

Stand Total					Per Acre					Avg. Tree			Avg. Heights		
DBH	Trees	PW/Tons	Saw/Tons	MBF	BA	Trees	PW/Tons	Saw/Tons	BF	Tons/Tree	BF/Tree	Hs	Hp	Hm	
Sawlog	14	15.0	0.0	7.8	1.2	1.78	1.7	0.00	0.87	138.79	83.272	20.5	20.5	20.5	
	15	30.0	0.0	27.6	4.5	4.09	3.3	0.00	3.07	498.04	149.413	37.0	37.0	37.0	
	16	15.0	0.0	8.6	1.4	2.33	1.7	0.00	0.95	159.25	95.552	16.5	16.5	16.5	
Sawlog Total	60.0	0.0	44.0	7.2	8.20	6.7	0.00	4.89	796.08	0.734	119.413	27.8	27.8	27.8	

Stand Total					Per Acre					Avg. Tree			Avg. Heights		
DBH	Trees	PW/Tons	Saw/Tons	MBF	BA	Trees	PW/Tons	Saw/Tons	BF	Tons/Tree	BF/Tree	Hs	Hp	Hm	
Merch Group Total	540.0	269.1	44.0	7.2	50.08	60.0	29.90	4.89	796.08	0.580	13.268	27.8	33.5	33.5	



**Hardwood Class**

Stand Total					Per Acre					Avg. Tree		Avg. Heights		
DBH	Trees	PW/Tons	Saw Tons	MBF	BA	Trees	PW/Tons	Saw Tons	BF	Tons/Tree	BF/Tree	Hs	Hp	Hm
Merch Class Total	570.0	269.1	62.5	9.9	54.49	63.3	29.90	6.95	1095.29	0.582	17.294	24.0	32.6	32.6

**All Species Groups**

Stand Total					Per Acre					Avg. Tree		Avg. Heights		
DBH	Trees	PW/Tons	Saw Tons	MBF	BA	Trees	PW/Tons	Saw Tons	BF	Tons/Tree	BF/Tree	Hs	Hp	Hm
Merch Grand Total	810.0	426.0	216.6	37.8	94.21	90.0	47.33	24.07	4205.37	0.793	46.726	26.9	40.3	40.3

# The Spooner Estate Primrose Farm Tract 3 Crisp County, GA



### Stand Information & Legend



Bottomland Hardwood +/- 23 ac.



Tract Boundary

Data use subject to license.

© Delorme, XMap® 7.

www.delorme.com

MN (S.4°W)

TN

Scale 1 : 7,920



1" = 660.0 ft Data Zoom 14-0

Tract Value Summary by Class, Group and Product

Number of Stands:	1
# Plots/points:	13
Total Acres:	23
Sawlog Vol Units:	Scrib

Tract Name:	Spooner Primrose Farm Tract 3
Location:	Crisp County, GA
Report Date:	7/21/2020



Pine ----> Pine Class

Tract Total			
Product	Trees	PW Tons	Saw Tons
Pulpwood	88.5	54.5	
Sawlog	176.9	73.1	360.4
Top_Pulpwood		73.1	
Group Total	265.4	127.7	360.4

Per Acre			
BA	Trees	PW Tons	Saw Tons
	2.5	3.8	2.4
	17.1	7.7	3.2
	19.6	11.5	5.6

Avg. Tree			
Tons/Tree	Bf/Tree	Avg DBH	
0.6		10.8	
2.0	384.6	20.2	
0.4			
1.8	256.4	17.6	

\$/Ton		Value	
Tons	Stand Tot \$	Tons	Per Acre \$
\$10.00	\$545.28	\$545.28	\$23.71
\$30.00	\$10,812.16	\$10,812.16	\$470.09
\$6.00	\$438.83	\$438.83	\$19.08
\$24.17	\$11,796.28	\$11,796.28	\$512.88

Oak ----> Hardwood Class

Tract Total			
Product	Trees	PW Tons	Saw Tons
Sawlog	442.3	0.0	719.1
Group Total	442.3	0.0	719.1

Per Acre			
BA	Trees	PW Tons	Saw Tons
	39.6	19.2	0.0
	39.6	19.2	0.0

Avg. Tree			
Tons/Tree	Bf/Tree	Avg DBH	
1.6	254.7	19.4	
1.6	254.7	19.4	

\$/Ton		Value	
Tons	Stand Tot \$	Tons	Per Acre \$
\$40.00	\$28,765.47	\$28,765.47	\$1,250.67
\$40.00	\$28,765.47	\$28,765.47	\$1,250.67

Hickory ----> Hardwood Class

Tract Total			
Product	Trees	PW Tons	Saw Tons
Sawlog	88.5	0.0	144.1
Group Total	88.5	0.0	144.1

Per Acre			
BA	Trees	PW Tons	Saw Tons
	6.9	3.8	0.0
	6.9	3.8	0.0

Avg. Tree			
Tons/Tree	Bf/Tree	Avg DBH	
1.6	248.4	18.1	
1.6	248.4	18.1	

\$/Ton		Value	
Tons	Stand Tot \$	Tons	Per Acre \$
\$30.00	\$4,323.13	\$4,323.13	\$187.96
\$30.00	\$4,323.13	\$4,323.13	\$187.96

Misc. Hardwood ----> Hardwood Class

Tract Total			
Product	Trees	PW Tons	Saw Tons
Pulpwood	1,309.2	728.9	
Palletwood	35.4	0.0	18.8
Sawlog	159.2	0.0	128.7
Group Total	1,503.8	728.9	147.5

Per Acre			
BA	Trees	PW Tons	Saw Tons
	37.0	56.9	31.7
	1.1	1.5	0.0
	9.2	6.9	0.0
	47.3	65.4	31.7

Avg. Tree			
Tons/Tree	Bf/Tree	Avg DBH	
0.6		10.9	
0.5	71.9	11.5	
0.8	132.9	15.6	
0.6	15.8	11.5	

\$/Ton		Value	
Tons	Stand Tot \$	Tons	Per Acre \$
\$5.00	\$3,644.73	\$3,644.73	\$158.47
\$12.00	\$225.18	\$225.18	\$9.79
\$30.00	\$3,860.78	\$3,860.78	\$167.86
\$8.82	\$7,730.69	\$7,730.69	\$336.12

Hardwood Class

Tract Total				
Product	Trees	PW Tons	Saw Tons	MBF
Class Total	2,034.6	728.9	1,010.7	158.4

Per Acre				
BA	Trees	PW Tons	Saw Tons	BF
93.8	88.5	31.7	43.9	6,884.9

Avg. Tree		
Tons/tree	bf/tree	Avg DBH
0.9	77.8	13.9

Value	
\$/ton	Tons
\$23.46	Tons

Value	
Stand Tot \$	Per Acre \$
\$40,819.29	\$1,774.75

**All Species Groups**

Tract Total				
Product	Trees	PW Tons	Saw Tons	MBF
Grand Total	2,300.0	856.6	1,371.1	226.4

Per Acre				
BA	Trees	PW Tons	Saw Tons	BF
113.3	100.0	37.2	59.6	9,843.1

Avg. Tree		
Tons/tree	bf/tree	Avg DBH
1.0	98.4	14.4

Value	
\$/ton	Tons
\$23.62	Tons

Value	
Stand Tot \$	Per Acre \$
\$52,615.57	\$2,287.63





Palletwood	11	17.7	0.0	9.3	1.2
	12	17.7	0.0	9.5	1.3
<b>Palletwood Total</b>	<b>35.4</b>	<b>0.0</b>	<b>18.8</b>	<b>2.5</b>	

	0.51	0.8	0.00	0.40	52.41
	0.60	0.8	0.00	0.41	58.27
	<b>1.11</b>	<b>1.5</b>	<b>0.00</b>	<b>0.82</b>	<b>110.68</b>

	0.525	68.129	40.5	40.5	40.5
	0.536	75.749	32.5	32.5	32.5
	<b>0.530</b>	<b>71.939</b>	<b>36.5</b>	<b>36.5</b>	<b>36.5</b>

Sawlog	13	53.1	0.0	30.2	4.6
	14	70.8	0.0	47.0	7.4
	18	17.7	0.0	28.7	4.9
	24	17.7	0.0	22.8	4.2
<b>Sawlog Total</b>	<b>159.2</b>	<b>0.0</b>	<b>128.7</b>	<b>21.2</b>	

	2.13	2.3	0.00	1.31	198.10
	3.29	3.1	0.00	2.04	323.15
	1.36	0.8	0.00	1.25	214.96
	2.42	0.8	0.00	0.99	183.72
	<b>9.19</b>	<b>6.9</b>	<b>0.00</b>	<b>5.60</b>	<b>919.92</b>

	0.569	85.842	28.5	28.5	28.5
	0.664	105.023	29.0	29.0	29.0
	1.624	279.444	48.5	48.5	48.5
	1.287	238.836	16.5	16.5	16.5
	<b>0.808</b>	<b>132.878</b>	<b>29.6</b>	<b>29.6</b>	<b>29.6</b>

Merch Group Total	DBH	Trees	PW Tons	Saw Tons	MBF
		1,503.8	728.9	147.5	23.7

	BA	Trees	PW Tons	Saw Tons	BF
		47.27	65.4	31.69	6.41
					1030.60

	Tons/Tree	BF/Tree	Hs	HP	Hm
			30.9	37.8	37.8
	0.583	15.762			

### Hardwood Class

Merch Class Total	Stand Total				
	DBH	Trees	PW Tons	Saw Tons	MBF
		2,034.6	728.9	1,010.7	158.4

	BA	Trees	PW Tons	Saw Tons	BF
		93.75	88.5	31.69	43.94
					6884.87

	Tons/Tree	BF/Tree	Hs	HP	Hm
			32.6	36.6	36.6
	0.855	77.829			

### All Species Groups

Merch Grand Total	Stand Total				
	DBH	Trees	PW Tons	Saw Tons	MBF
		2,300.0	856.6	1,371.1	226.4

	BA	Trees	PW Tons	Saw Tons	BF
		113.30	100.0	37.24	59.61
					9843.15

	Tons/Tree	BF/Tree	Hs	HP	Hm
			35.4	40.6	40.6
	0.969	98.431			