

# TIMBERLAND SERVICES

Telephone: (229) 407-0208

wes.shiver@gmail.com

August 30, 2022

Pioneer Farms Inc.  
Mr. Keith A. O'Daniel  
9040 Roswell Road, Suite 500  
Sandy Springs, GA 30350

## **RE: TIMBER INVENTORY REPORT PIONEER FARMS INC. LOCATED IN JASPER COUNTY, GEORGIA**

Mr. O'Daniel,

Enclosed are the results of the timber cruise that was requested for the +/- 559 timbered acres on the Pioneer Farms Inc. tract located in Jasper County, Georgia. The tract was cruised for estimated timber volume and value. The merchantable timber was inventoried using fixed area tenth acre plots. On each sample plot merchantable trees were measured for diameter at breast height, classified by species (pine or hardwood) and product class. One sample plot was installed for every two acres of merchantable timber. Winyield growth and yield software was used to project the growth of the pre-merchantable planted pine stands and discount future harvest revenues into an estimate of net present value using a 7% discount rate. The cruise was conducted during the month of August 2022.

**Tract 1** has a total estimated current merchantable value of **\$121,088 or \$1,275/ acre.**

**Tract 2** has a total estimated current merchantable value of **\$447,551 or \$2,356/ acre.** The +/- 20 acres of pre-merchantable 2020 planted loblolly pine has a net present value of **\$10,200 or \$510/timbered acre.**

**Tract 3** has a total estimated current merchantable value of **\$3,411 or \$682/ acre.** The +/- 42 acres of pre-merchantable 2010 planted longleaf pine has a net present value of **\$35,280 or \$840/timbered acre.**

**Tract 4** has no merchantable timber value.

**Tract 5** has a total estimated current merchantable value of **\$32,091 or \$1,070/ acre.** The +/- 65 acres of pre-merchantable 2020 planted loblolly pine has a net present value of **\$35,750 or \$550/timbered acre.**

**Tract 6** has a total estimated current merchantable value of **\$52,615 or \$2,288/ acre.** The +/- 37 acres of pre-merchantable 2020 planted loblolly pine has a net present value of **\$21,090 or \$570/timbered acre.**

**Tract 7** has no merchantable timber value. The +/- 35 acres of pre-merchantable 2020 planted loblolly pine has a net present value of **\$18,375 or \$525/timbered acre.**

All acreages were estimated from aerial photography incorporated into a GIS mapping computer program.

Timber stumpage values coming from comparable sales in the area and published prices from Timber Mart-South were used in the valuation.

Total volume and value summaries for each timber stand are provided.

If you have any questions, please contact our office at your convenience.

Sincerely,

A handwritten signature in black ink, appearing to read "Wes Shiver". The signature is fluid and cursive, written in a professional style.

Wes Shiver  
Georgia Registered Forester #2809

## **General Assumptions and Limiting Conditions**

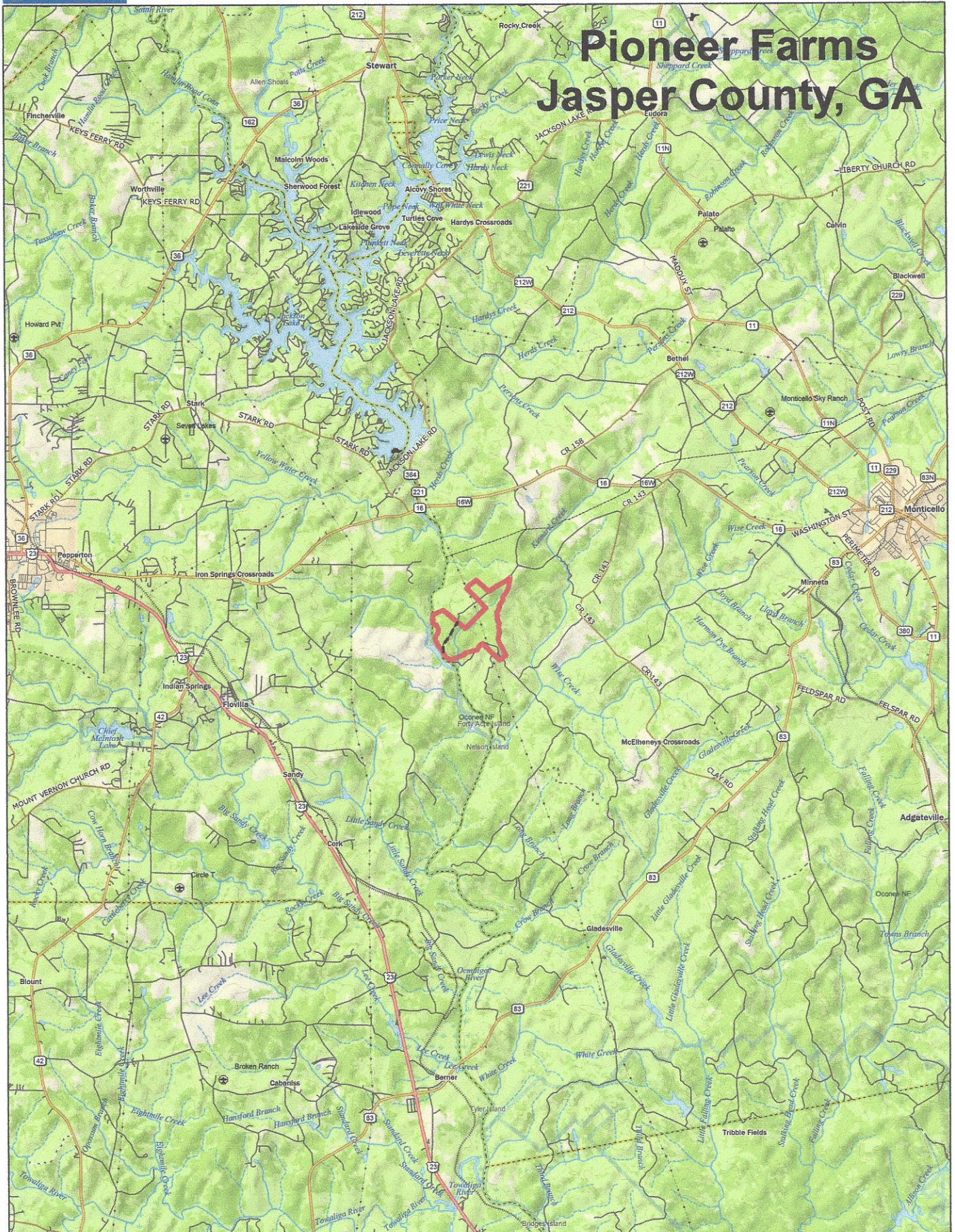
1. The timber appraiser assumes no responsibility for matters of a legal nature affecting the timber appraised or the title thereto, nor does the timber appraiser render any opinion as to the title, which is assumed to be good and marketable. The timber is appraised as though under responsible ownership.
2. Sketches in the report may show approximate dimensions and are included to assist the reader in visualizing the property. The timber appraiser has not made a survey of the property.
3. The timber appraiser is not required to give testimony or appear in court because of having made the appraisal with reference to the property in question.
4. Any distribution of the timber valuation in the report applies only under the existing program of utilization. The valuation of the timber as a pure asset should not be necessarily considered as the contributory value of the timber toward the value of the property in its entirety.
5. Information, estimates and opinions furnished to the timber appraiser, and contained in the report, were obtained from sources considered reliable and believed to be true and correct. However, the timber appraiser can assume no responsibility for the accuracy of such items furnished to the timber appraiser.
6. This report was prepared for the Client's use and the Client's sole discretion within the framework of the function stated in the report and its use for any other purpose is beyond the scope contemplated in the appraisal.
7. Where the timber appraisal conclusions are subject to satisfactory completion, repairs, or alterations, the appraisal report and value conclusion are contingent upon completion of the improvements in a workmanlike manner consistent with the plans, specification and/or scope contemplated in the appraisal.
8. Neither all nor any part of the contents of this report, especially any conclusions as to value, the identity of the appraiser or the firm with which he is connected, shall be disseminated to the public through advertising, public relations, news, sales, or other media without the prior written consent and approval of the author.
9. Acceptance of the report by the Clients constitutes acceptance of all assumptions and limiting conditions contained in the report.

## **Extraordinary Assumptions**

The estimates of timber volume for the subject area were determined from a timber inventory conducted by Timberland Services of Southwest GA LLC. A timber inventory is a small statistical sample of the area and is used to estimate the total volume of timber for the area. Timber volumes can vary by the timber product specifications used for an inventory. The timber product specifications used for this inventory are considered average for the area but can change or vary depending on utilization and particular specifications of different wood using mills. Timber volumes can also vary based on the utilization or grading skills of timber products by the harvesting (logging) operation. The estimate of timber volume for the subject should not be relied upon for the purpose other than for what it was designed for. Should the Clients or any third party use the timber volume estimates for any other proposes, they do so at their own risk,

and Timberland Services of Southwest GA assumes no responsibility for any injury to the client or any third party resulting from such use.

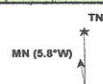
# Pioneer Farms Jasper County, GA



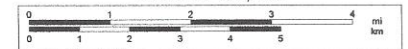
Data use subject to license.

© DeLorme. XMap® 7.

www.delorme.com








Scale 1 : 150,000

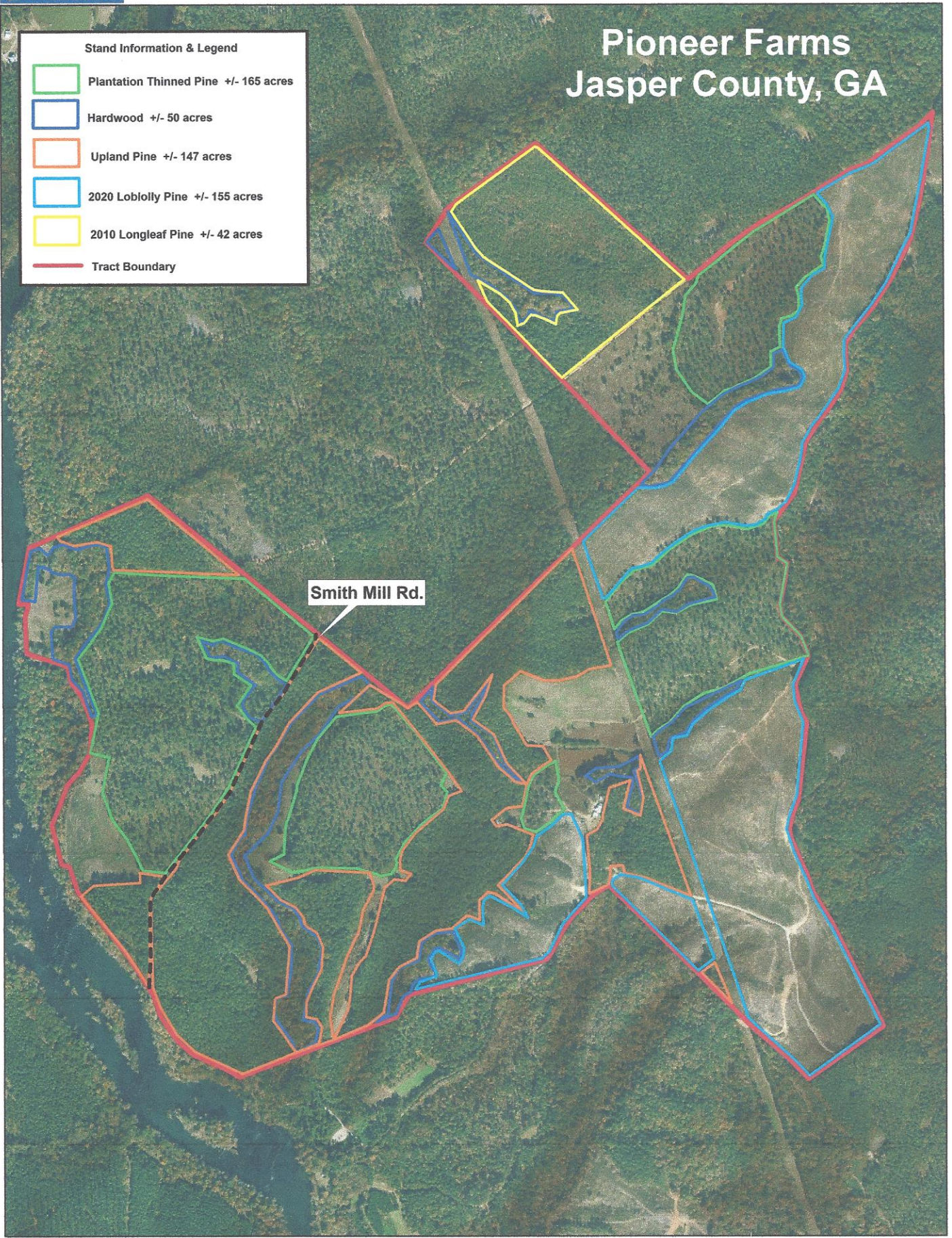


1" = 2.37 mi

Data Zoom 11-0

# Pioneer Farms Jasper County, GA

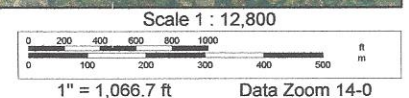
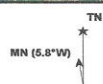
Stand Information & Legend	
	Plantation Thinned Pine +/- 165 acres
	Hardwood +/- 50 acres
	Upland Pine +/- 147 acres
	2020 Loblolly Pine +/- 155 acres
	2010 Longleaf Pine +/- 42 acres
	Tract Boundary



Data use subject to license.

© DeLorme. XMap® 7.

www.delorme.com



**Tract Value Summary by Group and Product**

Number of Stands:	11
# plots/points:	178
Total Acres:	362
Sawlog Vol Units:	Scrib

Tract Name:	Pioneer Farms
Location:	Jasper County
Report Date:	8/30/2022



**Pine**

Tract Total				
Product	Trees	PW Tons	Saw Tons	MBF
Pulpwood	2,098.9	755.8		
Chip-n-saw	1,083.2	86.9	435.5	52.2
Poles	137.6	26.1	167.5	27.7
Sawlog	13,612.2	4,277.4	15,837.0	2,744.3
Top_Pulpwood	4,390.3			
All Merchantable	16,931.9	5,146.1	16,440.0	2,824.2

Per Acre				
BA	Trees	PW Tons	Saw Tons	BF
	2.7	5.8	2.1	
	1.6	3.0	0.2	1.2
	0.5	0.4	0.1	0.5
	55.2	37.6	11.8	43.7
	60.1	46.8	14.2	45.4
				7,801.6

Avg. Tree		
Tons/Tree	BF/Tree	Avg DBH
0.4		9.3
0.4		48.2
1.2		201.4
1.2		201.6
0.3		
1.3		166.8
		15.3

\$/Ton		Value	
	Tons	Stand Tot \$	Per Acre \$
\$9.00	Tons	\$6,802.18	\$18.79
\$24.00	Tons	\$10,452.03	\$28.87
\$45.00	Tons	\$7,538.92	\$20.83
\$35.00	Tons	\$554,294.72	\$1,531.20
\$4.00	Tons	\$17,561.28	\$48.51
\$27.64	Tons	\$596,649.12	\$1,648.20

**Oak**

Tract Total				
Product	Trees	PW Tons	Saw Tons	MBF
Sawlog	385.3	0.0	469.1	71.3
All Merchantable	385.3	0.0	469.1	71.3

Per Acre				
BA	Trees	PW Tons	Saw Tons	BF
	1.8	1.1	0.0	1.3
	1.8	1.1	0.0	1.3
				196.9
				196.9

Avg. Tree		
Tons/Tree	BF/Tree	Avg DBH
1.2		185.0
1.2		185.0
		17.8

\$/Ton		Value	
	Tons	Stand Tot \$	Per Acre \$
\$42.00	Tons	\$19,702.18	\$54.43
\$42.00	Tons	\$19,702.18	\$54.43

**Poplar**

Tract Total				
Product	Trees	PW Tons	Saw Tons	MBF
Sawlog	151.6	0.0	201.7	38.9
All Merchantable	151.6	0.0	201.7	38.9

Per Acre				
BA	Trees	PW Tons	Saw Tons	BF
	0.8	0.4	0.0	0.6
	0.8	0.4	0.0	0.6
				107.5
				107.5

Avg. Tree		
Tons/Tree	BF/Tree	Avg DBH
1.3		256.7
1.3		256.7
		18.4

\$/Ton		Value	
	Tons	Stand Tot \$	Per Acre \$
\$35.00	Tons	\$7,061.09	\$19.51
\$35.00	Tons	\$7,061.09	\$19.51

**Misc. Hardwood**

Tract Total				
Product	Trees	PW Tons	Saw Tons	MBF

Per Acre				
BA	Trees	PW Tons	Saw Tons	BF

Avg. Tree		
Tons/Tree	BF/Tree	Avg DBH

\$/Ton		Value	
	Tons	Stand Tot \$	Per Acre \$

Pulpwood	3,296.5	1,191.7		
Palletwood	375.3	0.0	214.4	30.6
Sawlog	243.1	0.0	318.6	55.4
All Merchantable	3,914.9	1,191.7	533.0	86.0

	4.9	9.1	3.3	
	0.8	1.0	0.0	0.6
	1.1	0.7	0.0	0.9
	6.8	10.8	3.3	1.5

	0.4			9.9
	0.6		81.6	12.2
	1.3		227.7	17.4
	0.4		22.0	10.7

	\$10.00	Tons	\$11,916.58	\$32.92
	\$23.00	Tons	\$4,930.94	\$13.62
	\$23.00	Tons	\$7,326.98	\$20.24
	\$14.02	Tons	\$24,174.50	\$66.78


**All Species Group**

Tract Total				
Product	Trees	PW Tons	Saw Tons	MBF
Pulpwood	5,395.4	1,947.5		
Chip-n-saw	1,458.5	86.9	649.9	82.8
Poles	137.6	26.1	167.5	27.7
Sawlog	14,392.2	4,277.4	16,826.4	2,909.8
Top_Pulpwood		4,390.3		
All Merchantable	21,383.7	6,337.8	17,643.8	3,020.4

Per Acre				
BA	Trees	PW Tons	Saw Tons	BF
7.6	14.9	5.4		
2.5	4.0	0.2	1.8	228.7
0.5	0.4	0.1	0.5	76.6
58.9	39.8	11.8	46.5	8,038.2
		12.1		
69.5	59.1	17.5	48.7	8,343.5

Avg. Tree			
Tons/Tree	BF/Tree	Avg DBH	
0.4		9.7	
0.4	56.8	10.6	
1.2	201.4	15.6	
1.2	202.2	16.5	
0.3			
1.1	141.2	14.7	

Value	
\$/Ton	Tons
\$9.61	Tons
\$23.67	Tons
\$45.00	Tons
\$34.97	Tons
\$4.00	Tons
\$27.00	Tons

Value	
Stand Tot \$	Per Acre \$
\$18,718.75	\$51.71
\$15,382.97	\$42.49
\$7,538.92	\$20.83
\$588,384.97	\$1,625.37
\$17,561.28	\$48.51
\$647,586.90	\$1,788.91



**Stand Value Summary by Group and Product**

Sampling Method:	Plot	Tract Name:	Pioneer Tract 1
BAF / Plot Size:	0.1	Stand ID:	Plantation Pine
Stand Acres:	66.0	Location:	Jasper County
Cruiser:	TS	Date Cruised:	8/30/2022
		Saw Volume Unit	Scrib



**Pine**

Stand Total				Per Acre				Avg. Tree			Value					
Product	Trees	PW Tons	Saw Tons	MBF	BA	Trees	PW Tons	Saw Tons	BF	Tons/Tree	bf/tree	Avg DBH	\$/Ton	Tons	Stand Tot \$	Per Acre \$
Poles	80.0	15.2	86.9	14.0	1.5	1.2	0.2	1.3	212.8	1.1	175.5	15.0	\$45.00	Tons	\$3,911.81	\$59.27
Sawlog	1,520.0	565.0	1,788.5	313.7	36.3	23.0	8.6	27.1	4,752.6	1.2	206.4	17.0	\$35.00	Tons	\$62,599.09	\$948.47
Top_Pulpwood		580.1					8.8			0.4			\$4.00	Tons	\$2,320.60	\$35.16
All Merchantable	1,600.0	580.1	1,875.5	327.7	37.8	24.2	8.8	28.4	4,965.3	1.5	204.8	16.9	\$28.03	Tons	\$68,831.50	\$1,042.90

**All Species Group**

Stand Total				Per Acre				Avg. Tree			Value					
Product	Trees	PW Tons	Saw Tons	MBF	BA	Trees	PW Tons	Saw Tons	BF	Tons/Tree	bf/tree	Avg DBH	\$/Ton	Tons	Stand Tot \$	Per Acre \$
Poles	80.0	15.2	86.9	14.0	1.5	1.2	0.2	1.3	212.8	1.1	175.5	15.0	\$45.00	Tons	\$3,911.81	\$59.27
Sawlog	1,520.0	565.0	1,788.5	313.7	36.3	23.0	8.6	27.1	4,752.6	1.2	206.4	17.0	\$35.00	Tons	\$62,599.09	\$948.47
Top_Pulpwood		580.1					8.8			0.4			\$4.00	Tons	\$2,320.60	\$35.16
All Merchantable	1,600.0	580.1	1,875.5	327.7	37.8	24.2	8.8	28.4	4,965.3	1.5	204.8	16.9	\$28.03	Tons	\$68,831.50	\$1,042.90

**Stand Value Summary by Group and Product**

Sampling Method:	Plot	Tract Name:	Pioneer Tract 1
BAF / Plot Size:	0.1	Stand ID:	Upland Pine
Stand Acres:	17.0	Location:	Jasper County
Cruiser:	TS	Date Cruised:	8/30/2022
		Saw Volume Unit	Scrib



**Pine**

Stand Total				Per Acre				Avg. Tree			Value					
Product	Trees	PW Tons	Saw Tons	MBF	BA	Trees	PW Tons	Saw Tons	BF	Tons/Tree	bf/tree	Avg DBH	\$/Ton	Tons	Stand Tot \$	Per Acre \$
Pulpwood	642.2	235.4			18.3	37.8	13.8		0.4	0.4	174.9	9.4	\$9.00	Tons	\$2,118.74	\$124.63
Poles	18.9	3.6	20.5	3.3	1.4	1.1	0.2	1.2	1.1	1.1	190.7	15.0	\$45.00	Tons	\$921.45	\$54.20
Sawlog	906.7	308.2	994.0	172.9	78.1	53.3	18.1	58.5	1.1	1.1	16.4	16.4	\$35.00	Tons	\$34,789.59	\$2,046.45
Top_Pulpwood		311.8					18.3		0.3	0.3			\$4.00	Tons	\$1,247.10	\$73.36
All Merchantable	1,567.8	547.2	1,014.5	176.2	97.8	92.2	32.2	59.7	1.0	1.0	112.4	13.9	\$25.02	Tons	\$39,076.88	\$2,298.64

**Misc. Hardwood**

Stand Total				Per Acre				Avg. Tree			Value					
Product	Trees	PW Tons	Saw Tons	MBF	BA	Trees	PW Tons	Saw Tons	BF	Tons/Tree	bf/tree	Avg DBH	\$/Ton	Tons	Stand Tot \$	Per Acre \$
Pulpwood	94.4	15.0			1.6	5.6	0.9		0.2	0.2	0.0	7.2	\$10.00	Tons	\$149.65	\$8.80
All Merchantable	94.4	15.0	0.0	0.0	1.6	5.6	0.9	0.0	0.2	0.2	0.0	7.2	\$10.00	Tons	\$149.65	\$8.80

**All Species Group**

Stand Total				Per Acre				Avg. Tree			Value					
Product	Trees	PW Tons	Saw Tons	MBF	BA	Trees	PW Tons	Saw Tons	BF	Tons/Tree	bf/tree	Avg DBH	\$/Ton	Tons	Stand Tot \$	Per Acre \$
Pulpwood	736.7	250.4			19.9	43.3	14.7		0.3	0.3	174.9	9.2	\$9.06	Tons	\$2,268.39	\$133.43
Poles	18.9	3.6	20.5	3.3	1.4	1.1	0.2	1.2	1.1	1.1	190.7	15.0	\$45.00	Tons	\$921.45	\$54.20
Sawlog	906.7	308.2	994.0	172.9	78.1	53.3	18.1	58.5	1.1	1.1	16.4	16.4	\$35.00	Tons	\$34,789.59	\$2,046.45
Top_Pulpwood		311.8					18.3		0.3	0.3			\$4.00	Tons	\$1,247.10	\$73.36
All Merchantable	1,662.2	562.2	1,014.5	176.2	99.4	97.8	33.1	59.7	1.0	1.0	106.0	13.7	\$24.88	Tons	\$39,226.53	\$2,307.44

**Stand Value Summary by Group and Product**

Sampling Method:	Plot	Tract Name:	Pioneer Tract 1
BAF / Plot Size:	0.1	Stand ID:	Hardwood
Stand Acres:	12.0	Location:	Jasper County
Cruiser:	TS	Date Cruised:	8/30/2022
		Saw Volume Unit	Scrib



**Oak**

Stand Total				Per Acre				Avg. Tree				Value				
Product	Trees	PW Tons	Saw Tons	MBF	BA	Trees	PW Tons	Saw Tons	BF	Tons/Tree	Bf/Tree	Avg DBH	\$/Ton	Tons	Stand Tot \$	Per Acre \$
Product	Trees	PW Tons	Saw Tons	MBF	BA	Trees	PW Tons	Saw Tons	BF	Tons/Tree	Bf/Tree	Avg DBH	\$/Ton	Tons	Stand Tot \$	Per Acre \$
Sawlog	192.0	0.0	201.2	30.3	27.2	16.0	0.0	16.8	2,522.9	1.0	157.7	17.7	\$42.00	Tons	\$8,448.77	\$704.06
All Merchantable	192.0	0.0	201.2	30.3	27.2	16.0	0.0	16.8	2,522.9	1.0	157.7	17.7	\$42.00	Tons	\$8,448.77	\$704.06

**Poplar**

Stand Total				Per Acre				Avg. Tree				Value				
Product	Trees	PW Tons	Saw Tons	MBF	BA	Trees	PW Tons	Saw Tons	BF	Tons/Tree	Bf/Tree	Avg DBH	\$/Ton	Tons	Stand Tot \$	Per Acre \$
Product	Trees	PW Tons	Saw Tons	MBF	BA	Trees	PW Tons	Saw Tons	BF	Tons/Tree	Bf/Tree	Avg DBH	\$/Ton	Tons	Stand Tot \$	Per Acre \$
Sawlog	48.0	0.0	69.7	13.6	7.7	4.0	0.0	5.8	1,136.5	1.5	284.1	18.8	\$35.00	Tons	\$2,439.41	\$203.28
All Merchantable	48.0	0.0	69.7	13.6	7.7	4.0	0.0	5.8	1,136.5	1.5	284.1	18.8	\$35.00	Tons	\$2,439.41	\$203.28

**Misc. Hardwood**

Stand Total				Per Acre				Avg. Tree				Value				
Product	Trees	PW Tons	Saw Tons	MBF	BA	Trees	PW Tons	Saw Tons	BF	Tons/Tree	Bf/Tree	Avg DBH	\$/Ton	Tons	Stand Tot \$	Per Acre \$
Product	Trees	PW Tons	Saw Tons	MBF	BA	Trees	PW Tons	Saw Tons	BF	Tons/Tree <td>Bf/Tree</td> <td>Avg DBH</td> <td>\$/Ton</td> <td>Tons</td> <td>Stand Tot \$</td> <td>Per Acre \$</td>	Bf/Tree	Avg DBH	\$/Ton	Tons	Stand Tot \$	Per Acre \$
Pulpwood	528.0	214.2			25.0	44.0	17.8			0.4	0.0	10.2	\$10.00	Tons	\$2,141.62	\$178.47
All Merchantable	528.0	214.2	0.0	0.0	25.0	44.0	17.8	0.0	0.0	0.4	0.0	10.2	\$10.00	Tons	\$2,141.62	\$178.47

**All Species Group**

Stand Total				Per Acre				Avg. Tree				Value				
Product	Trees	PW Tons	Saw Tons	MBF	BA	Trees	PW Tons	Saw Tons	BF	Tons/Tree	Bf/Tree	Avg DBH	\$/Ton	Tons	Stand Tot \$	Per Acre \$
Product	Trees	PW Tons	Saw Tons	MBF	BA	Trees	PW Tons	Saw Tons	BF	Tons/Tree <td>Bf/Tree</td> <td>Avg DBH</td> <td>\$/Ton</td> <td>Tons</td> <td>Stand Tot \$</td> <td>Per Acre \$</td>	Bf/Tree	Avg DBH	\$/Ton	Tons	Stand Tot \$	Per Acre \$
Pulpwood	528.0	214.2			25.0	44.0	17.8			0.4	0.0	10.2	\$10.00	Tons	\$2,141.62	\$178.47
Sawlog	240.0	0.0	270.9	43.9	35.0	20.0	0.0	22.6	3,659.4	1.1	183.0	17.9	\$40.20	Tons	\$10,888.18	\$907.35
All Merchantable	768.0	214.2	270.9	43.9	60.0	64.0	17.8	22.6	3,659.4	0.6	57.2	13.1	\$26.86	Tons	\$13,029.79	\$1,085.82

Stand Value Summary by Group and Product

Sampling Method:	Plot	Tract Name:	Pioneer Tract 2
BAF / Plot Size:	0.1	Stand ID:	Upland Pine
Stand Acres:	130.0	Location:	Jasper
Cruiser:	TS	Date Cruised:	8/30/2022
		Saw Volume Unit	Scrib



Pine

Stand Total				Per Acre				Avg. Tree			Value				
Product	Trees	PW Tons	Saw Tons	MBF	BA	Trees	PW Tons	Saw Tons	BF	Tons/Tree	Bf/Tree	Avg DBH	\$/Ton	Stand Tot \$	Per Acre \$
Pulpwood	1,351.0	490.3			4.9	10.4	3.8			0.4		9.3	\$9.00	\$4,413.00	\$33.95
Chip-n-saw	1,019.6	80.2	410.7	49.1	4.3	7.8	0.6	3.2	377.5	0.4	48.1	10.0	\$24.00	\$9,856.44	\$75.82
Sawlog	8,768.6	2,620.8	9,810.6	1,684.8	95.2	67.5	20.2	75.5	12,959.7	1.1	192.1	16.1	\$35.00	\$343,370.30	\$2,641.31
Top_Pulpwood		2,700.9					20.8			0.3			\$4.00	\$10,803.72	\$83.11
All Merchandable	11,139.2	3,191.3	10,221.3	1,733.8	104.4	85.7	24.5	78.6	13,337.2	1.2	155.7	14.9	\$27.47	\$368,443.47	\$2,834.18

Oak

Stand Total				Per Acre				Avg. Tree			Value				
Product	Trees	PW Tons	Saw Tons	MBF	BA	Trees	PW Tons	Saw Tons	BF	Tons/Tree	Bf/Tree	Avg DBH	\$/Ton	Stand Tot \$	Per Acre \$
Sawlog	25.5	0.0	28.3	4.1	0.3	0.2	0.0	0.2	31.3	1.1	159.8	16.0	\$42.00	\$1,187.86	\$9.14
All Merchandable	25.5	0.0	28.3	4.1	0.3	0.2	0.0	0.2	31.3	1.1	159.8	16.0	\$42.00	\$1,187.86	\$9.14

Misc. Hardwood

Stand Total				Per Acre				Avg. Tree			Value				
Product	Trees	PW Tons	Saw Tons	MBF	BA	Trees	PW Tons	Saw Tons	BF	Tons/Tree	Bf/Tree	Avg DBH	\$/Ton	Stand Tot \$	Per Acre \$
Pulpwood	1,249.0	453.3			5.1	9.6	3.5			0.4		9.9	\$10.00	\$4,532.80	\$34.87
Palletwood	127.5	0.0	78.0	11.6	0.9	1.0	0.0	0.6	89.5	0.6	91.3	12.8	\$23.00	\$1,793.81	\$13.80
Sawlog	51.0	0.0	61.2	10.1	0.5	0.4	0.0	0.5	77.6	1.2	197.9	16.0	\$23.00	\$1,406.82	\$10.82
All Merchandable	1,427.5	453.3	139.2	21.7	6.6	11.0	3.5	1.1	167.2	0.4	15.2	10.5	\$13.05	\$7,733.42	\$59.49

All Species Group

Stand Total				Per Acre				Avg. Tree			Value				
Product	Trees	PW Tons	Saw Tons	MBF	BA	Trees	PW Tons	Saw Tons	BF	Tons/Tree	Bf/Tree	Avg DBH	\$/Ton	Stand Tot \$	Per Acre \$
Pulpwood	2,600.0	943.6			10.0	20.0	7.3			0.4		9.6	\$9.48	\$8,945.80	\$68.81
Chip-n-saw	1,147.1	80.2	488.7	60.7	5.2	8.8	0.6	3.8	467.1	0.4	52.9	10.4	\$23.84	\$11,650.26	\$89.62
Sawlog	8,845.1	2,620.8	9,900.0	1,698.9	96.1	68.0	20.2	76.2	13,068.7	1.1	192.1	16.1	\$34.95	\$345,964.97	\$2,661.27

Top_Pulpwood		2,700.9		
All Merchantable	12,592.2	3,644.5	10,388.7	1,759.6

			20.8	
111.3	96.9	28.0	79.9	13,535.7

	0.3		
1.1	139.7		14.5

\$4.00	Tons
\$26.89	Tons

\$10,803.72	\$83.11
\$377,364.75	\$2,902.81

**Stand Value Summary by Group and Product**

Sampling Method:	Plot	Tract Name:	Pioneer Tract 2
BAF / Plot Size:	0.1	Stand ID:	Plantation Pine
Stand Acres:	35.0	Location:	Jasper
Cruiser:	TS	Date Cruised:	8/30/2022
		Saw Volume Unit	Scrib



**Pine**

Stand Total				
Product	Trees	PW Tons	Saw Tons	MBF
Sawlog	1,050.0	337.7	1,144.6	197.8
Top_Pulpwood		337.7		
All Merchantable	1,050.0	337.7	1,144.6	197.8

Per Acre				
BA	Trees	PW Tons	Saw Tons	BF
	42.7	30.0	9.6	32.7
			9.6	
	42.7	30.0	9.6	32.7

Avg. Tree		
Tons/Tree	Bf/Tree	Avg DBH
1.1	188.4	16.2
0.3		
1.4	188.4	16.2

\$/Ton		Value	
	Tons	Stand Tot \$	Per Acre \$
\$35.00	Tons	\$40,060.56	\$1,144.59
\$4.00	Tons	\$1,350.76	\$38.59
\$27.94	Tons	\$41,411.32	\$1,183.18

**All Species Group**

Stand Total				
Product	Trees	PW Tons	Saw Tons	MBF
Sawlog	1,050.0	337.7	1,144.6	197.8
Top_Pulpwood		337.7		
All Merchantable	1,050.0	337.7	1,144.6	197.8

Per Acre				
BA	Trees	PW Tons	Saw Tons	BF
	42.7	30.0	9.6	32.7
			9.6	
	42.7	30.0	9.6	32.7

Avg. Tree		
Tons/Tree	Bf/Tree	Avg DBH
1.1	188.4	16.2
0.3		
1.4	188.4	16.2

\$/Ton		Value	
	Tons	Stand Tot \$	Per Acre \$
\$35.00	Tons	\$40,060.56	\$1,144.59
\$4.00	Tons	\$1,350.76	\$38.59
\$27.94	Tons	\$41,411.32	\$1,183.18

**Stand Value Summary by Group and Product**

Sampling Method:	Plot	Tract Name:	Pioneer Tract 2
BAF / Plot Size:	0.1	Stand ID:	Hardwood
Stand Acres:	25.0	Location:	Jasper
Cruiser:	TS	Date Cruised:	8/30/2022
		Saw Volume Unit	Scrib



**Pine**

Stand Total				Per Acre				Avg. Tree			Value					
Product	Trees	PW Tons	Saw Tons	MBF	BA	Trees	PW Tons	Saw Tons	BF	Tons/Tree	bf/Tree	Avg DBH	\$/Ton	Tons	Stand Tot \$	Per Acre \$
Pulpwood	35.7	8.9			0.5	1.4	0.4			0.2		8.0	\$9.00	Tons	\$79.87	\$3.19
Chip-n-saw	53.6	5.3	20.4	2.5	1.2	2.1	0.2	0.8	99.7	0.4	46.5	10.0	\$24.00	Tons	\$490.31	\$19.61
Sawlog	232.1	76.2	288.6	50.5	14.2	9.3	3.0	11.5	2,020.7	1.2	217.6	16.7	\$35.00	Tons	\$10,102.18	\$404.09
Top_Pulpwood		81.4					3.3			0.3			\$4.00	Tons	\$325.78	\$13.03
All Merchantable	321.4	90.3	309.1	53.0	15.9	12.9	3.6	12.4	2,120.3	1.2	164.9	15.0	\$27.54	Tons	\$10,998.14	\$439.93

**Oak**

Stand Total				Per Acre				Avg. Tree			Value					
Product	Trees	PW Tons	Saw Tons	MBF	BA	Trees	PW Tons	Saw Tons	BF	Tons/Tree	bf/Tree	Avg DBH	\$/Ton	Tons	Stand Tot \$	Per Acre \$
Pulpwood	142.9	0.0	191.5	29.3	10.2	5.7	0.0	7.7	1,172.2	1.3	205.1	18.1	\$42.00	Tons	\$8,041.68	\$321.67
Sawlog	142.9	0.0	191.5	29.3	10.2	5.7	0.0	7.7	1,172.2	1.3	205.1	18.1	\$42.00	Tons	\$8,041.68	\$321.67

**Poplar**

Stand Total				Per Acre				Avg. Tree			Value					
Product	Trees	PW Tons	Saw Tons	MBF	BA	Trees	PW Tons	Saw Tons	BF	Tons/Tree	bf/Tree	Avg DBH	\$/Ton	Tons	Stand Tot \$	Per Acre \$
Pulpwood	53.6	0.0	55.7	10.5	3.5	2.1	0.0	2.2	418.6	1.0	195.4	17.4	\$35.00	Tons	\$1,951.23	\$78.05
Sawlog	53.6	0.0	55.7	10.5	3.5	2.1	0.0	2.2	418.6	1.0	195.4	17.4	\$35.00	Tons	\$1,951.23	\$78.05

**Misc. Hardwood**

Stand Total				Per Acre				Avg. Tree			Value					
Product	Trees	PW Tons	Saw Tons	MBF	BA	Trees	PW Tons	Saw Tons	BF	Tons/Tree	bf/Tree	Avg DBH	\$/Ton	Tons	Stand Tot \$	Per Acre \$
Pulpwood	1,000.0	354.1			22.0	40.0	14.2			0.4		10.0	\$10.00	Tons	\$3,540.54	\$141.62
Palletwood	142.9	0.0	76.0	10.9	4.5	5.7	0.0	3.0	435.0	0.5	76.1	12.0	\$23.00	Tons	\$1,748.68	\$69.95
Sawlog	107.1	0.0	108.5	17.9	5.8	4.3	0.0	4.3	714.1	1.0	166.6	15.7	\$23.00	Tons	\$2,494.39	\$99.78
All Merchantable	1,250.0	354.1	184.5	28.7	32.2	50.0	14.2	7.4	1,149.1	0.4	23.0	10.9	\$14.45	Tons	\$7,783.61	\$311.34

**All Species Group**

Stand Total				
Product	Trees	PW Tons	Saw Tons	MBF
Pulpwood	1,035.7	362.9		
Chip-n-saw	196.4	5.3	96.5	13.4
Sawlog	535.7	76.2	644.3	108.1
Top_Pulpwood		81.4		
All Merchantable	1,767.9	444.4	740.8	121.5

Per Acre				
BA	Trees	PW Tons	Saw Tons	BF
22.5	41.4	14.5		
5.7	7.9	0.2	3.9	534.7
33.7	21.4	3.0	25.8	4,325.6
		3.3		
61.8	70.7	17.8	29.6	4,860.3

Avg. Tree		
Tons/Tree	Bf/Tree	Avg DBH
0.4		10.0
0.5	68.0	11.5
1.2	201.9	17.0
0.1		
0.7	68.7	12.7

\$ / Ton		Value	
	Tons	Stand Tot \$	Per Acre \$
\$9.98	Tons	\$3,620.41	\$144.82
\$23.21	Tons	\$2,238.98	\$89.56
\$35.06	Tons	\$22,589.47	\$903.58
\$4.00	Tons	\$325.78	\$13.03
\$24.28	Tons	\$28,774.65	\$1,150.99



Stand Value Summary by Group and Product

Sampling Method:	Plot	Tract Name:	Pioneer Tract 3
BAF / Plot Size:	0.1	Stand ID:	Hardwood
Stand Acres:	5.0	Location:	Jasper County
Cruiser:	TS	Date Cruised:	8/30/2022
		Saw Volume Unit	Scrib



Pine

Stand Total				Per Acre				Avg. Tree			Value			
Product	Trees	PW Tons	Saw Tons	MBF	BA	Trees	PW Tons	Saw Tons	BF	Avg DBH	\$/Ton	Tons	Stand Tot \$	Per Acre \$
Pulpwood	60.0	20.3			5.2	12.0	4.1		0.3	8.9	\$9.00	Tons	\$182.52	\$36.50
Chip-n-saw	10.0	1.4	4.4	0.6	1.3	2.0	0.3	0.9	0.4	59.3	\$24.00	Tons	\$105.28	\$21.06
Sawlog	40.0	12.6	59.2	10.5	13.5	8.0	2.5	11.8	1.5	262.1	\$35.00	Tons	\$2,072.64	\$414.53
Top_Pulpwood		14.1					2.8		0.3		\$4.00	Tons	\$56.24	\$11.25
All Merchantable	110.0	34.3	63.6	11.1	20.0	22.0	6.9	12.7	0.9	100.7	\$24.67	Tons	\$2,416.68	\$483.34

Misc. Hardwood

Stand Total				Per Acre				Avg. Tree			Value			
Product	Trees	PW Tons	Saw Tons	MBF	BA	Trees	PW Tons	Saw Tons	BF	Avg DBH	\$/Ton	Tons	Stand Tot \$	Per Acre \$
Pulpwood	70.0	28.7			7.2	14.0	5.7		0.4	9.7	\$10.00	Tons	\$287.05	\$57.41
Palletwood	30.0	0.0	18.3	2.4	4.5	6.0	0.0	3.7	0.6	80.5	\$23.00	Tons	\$421.95	\$84.39
Sawlog	10.0	0.0	12.4	2.0	2.8	2.0	0.0	2.5	1.2	203.6	\$23.00	Tons	\$285.03	\$57.01
All Merchantable	110.0	28.7	30.7	4.5	14.4	22.0	5.7	6.1	0.5	40.5	\$16.72	Tons	\$994.03	\$198.81

All Species Group

Stand Total				Per Acre				Avg. Tree			Value			
Product	Trees	PW Tons	Saw Tons	MBF	BA	Trees	PW Tons	Saw Tons	BF	Avg DBH	\$/Ton	Tons	Stand Tot \$	Per Acre \$
Pulpwood	130.0	49.0			12.4	26.0	9.8		0.4	9.3	\$9.59	Tons	\$469.58	\$93.92
Chip-n-saw	40.0	1.4	22.7	3.0	5.8	8.0	0.3	4.5	0.6	75.2	\$23.19	Tons	\$527.23	\$105.45
Sawlog	50.0	12.6	71.6	12.5	16.3	10.0	2.5	14.3	1.4	250.4	\$32.92	Tons	\$2,357.67	\$471.53
Top_Pulpwood		14.1					2.8		0.2		\$4.00	Tons	\$56.24	\$11.25
All Merchantable	220.0	63.0	94.3	15.5	34.4	44.0	12.6	18.9	0.7	70.6	\$21.67	Tons	\$3,410.72	\$682.14

**Stand Value Summary by Group and Product**

Sampling Method:	Plot	Tract Name:	Pioneer Tract 5
BAF / Plot Size:	0.1	Stand ID:	Plantation Pine
Stand Acres:	27.0	Location:	Jasper County
Cruiser:	TS	Date Cruised:	8/30/2022
		Saw Volume Unit	Scrib



**Pine**

Stand Total					Per Acre					Avg. Tree			Value			
Product	Trees	PW Tons	Saw Tons	MBF	BA	Trees	PW Tons	Saw Tons	BF	Tons/Tree	Bf/Tree	Avg DBH	\$/Ton	Tons	Stand Tot \$	Per Acre \$
Poles	19.3	3.6	29.9	5.2	1.1	0.7	0.1	1.1	191.3	1.6	267.8	17.0	\$45.00	Tons	\$1,346.27	\$49.86
Sawlog	405.0	108.7	618.0	109.0	24.7	15.0	4.0	22.9	4,036.0	1.5	269.1	17.4	\$35.00	Tons	\$21,630.52	\$801.13
Top_Pulpwood		112.3					4.2			0.3			\$4.00	Tons	\$449.28	\$16.64
All Merchantable	424.3	112.3	647.9	114.1	25.9	15.7	4.2	24.0	4,227.3	1.8	269.0	17.4	\$30.81	Tons	\$23,426.07	\$867.63

**All Species Group**

Stand Total					Per Acre					Avg. Tree			Value			
Product	Trees	PW Tons	Saw Tons	MBF	BA	Trees	PW Tons	Saw Tons	BF	Tons/Tree	Bf/Tree	Avg DBH	\$/Ton	Tons	Stand Tot \$	Per Acre \$
Poles	19.3	3.6	29.9	5.2	1.1	0.7	0.1	1.1	191.3	1.6	267.8	17.0	\$45.00	Tons	\$1,346.27	\$49.86
Sawlog	405.0	108.7	618.0	109.0	24.7	15.0	4.0	22.9	4,036.0	1.5	269.1	17.4	\$35.00	Tons	\$21,630.52	\$801.13
Top_Pulpwood		112.3					4.2			0.3			\$4.00	Tons	\$449.28	\$16.64
All Merchantable	424.3	112.3	647.9	114.1	25.9	15.7	4.2	24.0	4,227.3	1.8	269.0	17.4	\$30.81	Tons	\$23,426.07	\$867.63

Stand Value Summary by Group and Product

Sampling Method:	Plot
BAF / Plot Size:	0.1
Stand Acres:	3.0
Cruiser:	TS

Tract Name:	Pioneer Tract 5
Stand ID:	Hardwood
Location:	Jasper County
Date Crused:	8/30/2022
Saw Volume Unit	Scrib



Pine

Stand Total				
Product	Trees	PW Tons	Saw Tons	MBF
Sawlog	15.0	4.3	8.7	1.4
Top_Pulpwood		4.3		
All Merchantable	15.0	4.3	8.7	1.4

Per Acre				
BA	Trees	PW Tons	Saw Tons	BF
	5.3	5.0	1.4	2.9
		1.4		
	5.3	5.0	1.4	2.9

Avg. Tree			
Tons/Tree	Bf/Tree	Avg DBH	
0.6	95.7	14.0	
0.3			
0.9	95.7	14.0	

\$/Ton		Value	
Tons		Stand Tot \$	Per Acre \$
\$35.00	Tons	\$304.82	\$101.61
\$4.00	Tons	\$17.21	\$5.74
\$24.75	Tons	\$322.03	\$107.34

Oak

Stand Total				
Product	Trees	PW Tons	Saw Tons	MBF
Sawlog	15.0	0.0	41.3	6.7
All Merchantable	15.0	0.0	41.3	6.7

Per Acre				
BA	Trees	PW Tons	Saw Tons	BF
	13.2	5.0	0.0	13.8
		0.0		
	13.2	5.0	0.0	13.8

Avg. Tree			
Tons/Tree	Bf/Tree	Avg DBH	
2.8	444.5	22.0	
2.8	444.5	22.0	

\$/Ton		Value	
Tons		Stand Tot \$	Per Acre \$
\$42.00	Tons	\$1,734.92	\$578.31
\$42.00	Tons	\$1,734.92	\$578.31

Poplar

Stand Total				
Product	Trees	PW Tons	Saw Tons	MBF
Sawlog	30.0	0.0	59.0	11.8
All Merchantable	30.0	0.0	59.0	11.8

Per Acre				
BA	Trees	PW Tons	Saw Tons	BF
	25.2	10.0	0.0	19.7
		0.0		
	25.2	10.0	0.0	19.7

Avg. Tree			
Tons/Tree	Bf/Tree	Avg DBH	
2.0	394.0	21.5	
2.0	394.0	21.5	

\$/Ton		Value	
Tons		Stand Tot \$	Per Acre \$
\$35.00	Tons	\$2,065.71	\$688.57
\$35.00	Tons	\$2,065.71	\$688.57

Misc. Hardwood

Stand Total				
Product	Trees	PW Tons	Saw Tons	MBF
Pulpwood	195.0	78.3		
Palletwood	45.0	0.0	26.9	3.7
Sawlog	75.0	0.0	136.6	25.4
All Merchantable	315.0	78.3	163.5	29.1

Per Acre				
BA	Trees	PW Tons	Saw Tons	BF
	37.6	65.0	26.1	
		0.0		
	11.2	15.0	0.0	9.0
	56.7	25.0	0.0	45.5
	105.5	105.0	26.1	54.5

Avg. Tree			
Tons/Tree	Bf/Tree	Avg DBH	
0.4		10.3	
0.6	81.8	11.7	
1.8	338.3	20.4	
0.8	92.2	13.6	

\$/Ton		Value	
Tons		Stand Tot \$	Per Acre \$
\$10.00	Tons	\$782.65	\$260.88
\$23.00	Tons	\$619.07	\$206.36
\$23.00	Tons	\$3,140.75	\$1,046.92
\$18.79	Tons	\$4,542.47	\$1,514.16

All Species Group

Stand Total				
Product	Trees	PW Tons	Saw Tons	MBF
Pulpwood	195.0	78.3		
Chip-n-saw	45.0	0.0	26.9	3.7
Sawlog	135.0	4.3	245.6	45.3
Top_Pulpwood		4.3		
All Merchantable	375.0	82.6	272.5	49.0

Per Acre					
BA	Trees	PW Tons	Saw Tons	BF	
37.6	65.0	26.1			
11.2	15.0	0.0	9.0	1,226.4	
100.5	45.0	1.4	81.9	15,099.5	
		1.4			
149.3	125.0	27.5	90.8	16,325.9	

Avg. Tree			
Tons/Tree	Bf/Tree	Avg DBH	
0.4		10.3	
0.6	81.8	11.7	
1.8	335.5	20.2	
0.0			
0.9	130.6	14.8	

Value			
\$/Ton	Tons	Stand Tot \$	Per Acre \$
\$10.00	Tons	\$782.65	\$260.88
\$23.00	Tons	\$619.07	\$206.36
\$29.51	Tons	\$7,246.20	\$2,415.40
\$4.00	Tons	\$17.21	\$5.74
\$24.40	Tons	\$8,665.14	\$2,888.38

**Stand Value Summary by Group and Product**

Sampling Method:	Plot	Tract Name:	Pioneer Tract 6
BAF / Plot Size:	0.1	Stand ID:	Plantation Pine
Stand Acres:	37.0	Location:	Jasper County
Cruiser:	TS	Date Cruised:	8/26/2022
		Saw Volume Unit	Scrib



**Pine**

Stand Total				Per Acre				Avg. Tree			Value				
Product	Trees	PW Tons	Saw Tons	MBF	BA	Trees	PW Tons	Saw Tons	BF	Tons/Tree	Bf/Tree	Avg DBH	\$/Ton	Stand Tot \$	Per Acre \$
Poles	19.5	3.7	30.2	5.2	0.8	0.5	0.1	0.8	140.9	1.6	267.8	17.0	\$45.00	\$1,359.39	\$36.74
Sawlog	564.7	206.9	937.1	169.8	28.6	15.3	5.6	25.3	4,589.5	1.7	300.7	18.5	\$35.00	\$32,800.01	\$886.49
Top_Pulpwood		210.6					5.7			0.4			\$4.00	\$842.54	\$22.77
All Merchantable	584.2	210.6	967.4	175.0	29.5	15.8	5.7	26.1	4,730.4	2.0	299.6	18.5	\$29.71	\$35,001.94	\$946.00

**All Species Group**

Stand Total				Per Acre				Avg. Tree			Value				
Product	Trees	PW Tons	Saw Tons	MBF	BA	Trees	PW Tons	Saw Tons	BF	Tons/Tree	Bf/Tree	Avg DBH	\$/Ton	Stand Tot \$	Per Acre \$
Poles	19.5	3.7	30.2	5.2	0.8	0.5	0.1	0.8	140.9	1.6	267.8	17.0	\$45.00	\$1,359.39	\$36.74
Sawlog	564.7	206.9	937.1	169.8	28.6	15.3	5.6	25.3	4,589.5	1.7	300.7	18.5	\$35.00	\$32,800.01	\$886.49
Top_Pulpwood		210.6					5.7			0.4			\$4.00	\$842.54	\$22.77
All Merchantable	584.2	210.6	967.4	175.0	29.5	15.8	5.7	26.1	4,730.4	2.0	299.6	18.5	\$29.71	\$35,001.94	\$946.00

Stand Value Summary by Group and Product

Sampling Method:	Plot	Tract Name:	Pioneer Tract 6
BAF / Plot Size:	0.1	Stand ID:	Hardwood
Stand Acres:	5.0	Location:	Jasper County
Cruiser:	TS	Date Cruised:	8/26/2022
		Saw Volume Unit	Scrib



Pine

Stand Total				Per Acre				Avg. Tree				Value				
Product	Trees	PW Tons	Saw Tons	MBF	BA	Trees	PW Tons	Saw Tons	BF	Tons/Tree	Bf/Tree	Avg DBH	\$/Ton	Tons	Stand Tot \$	Per Acre \$
Pulpwood	10.0	0.9			0.3	2.0	0.2			0.1		5.0	\$9.00	Tons	\$8.04	\$1.61
Sawlog	110.0	37.0	187.6	33.9	40.9	22.0	7.4	37.5	6,778.6	1.7	308.1	18.5	\$35.00	Tons	\$6,565.01	\$1,313.00
Top_Pulpwood		37.0					7.4			0.3			\$4.00	Tons	\$148.04	\$29.61
All Merchantable	120.0	37.9	187.6	33.9	41.1	24.0	7.6	37.5	6,778.6	1.9	282.4	17.7	\$29.81	Tons	\$6,721.10	\$1,344.22

Oak

Stand Total				Per Acre				Avg. Tree				Value				
Product	Trees	PW Tons	Saw Tons	MBF	BA	Trees	PW Tons	Saw Tons	BF	Tons/Tree	Bf/Tree	Avg DBH	\$/Ton	Tons	Stand Tot \$	Per Acre \$
Pulpwood	10.0	0.0	6.9	1.0	2.1	2.0	0.0	1.4	191.1	0.7	95.5	14.0	\$42.00	Tons	\$288.95	\$57.79
Sawlog																
All Merchantable	10.0	0.0	6.9	1.0	2.1	2.0	0.0	1.4	191.1	0.7	95.5	14.0	\$42.00	Tons	\$288.95	\$57.79

Poplar

Stand Total				Per Acre				Avg. Tree				Value				
Product	Trees	PW Tons	Saw Tons	MBF	BA	Trees	PW Tons	Saw Tons	BF	Tons/Tree	Bf/Tree	Avg DBH	\$/Ton	Tons	Stand Tot \$	Per Acre \$
Pulpwood	20.0	0.0	17.3	3.0	4.6	4.0	0.0	3.5	597.5	0.9	149.4	14.6	\$35.00	Tons	\$604.75	\$120.95
Sawlog																
All Merchantable	20.0	0.0	17.3	3.0	4.6	4.0	0.0	3.5	597.5	0.9	149.4	14.6	\$35.00	Tons	\$604.75	\$120.95

Misc. Hardwood

Stand Total				Per Acre				Avg. Tree				Value				
Product	Trees	PW Tons	Saw Tons	MBF	BA	Trees	PW Tons	Saw Tons	BF	Tons/Tree	Bf/Tree	Avg DBH	\$/Ton	Tons	Stand Tot \$	Per Acre \$
Pulpwood	160.0	48.2			13.4	32.0	9.6			0.3		8.8	\$10.00	Tons	\$482.27	\$96.45
Palletwood	30.0	0.0	15.1	2.0	4.2	6.0	0.0	3.0	406.1	0.5	67.7	11.3	\$23.00	Tons	\$347.43	\$69.49
All Merchantable	190.0	48.2	15.1	2.0	17.6	38.0	9.6	3.0	406.1	0.3	10.7	9.2	\$13.10	Tons	\$829.70	\$165.94

All Species Group

Stand Total				
Product	Trees	PW Tons	Saw Tons	MBF
Pulpwood	170.0	49.1		
Chip-n-saw	30.0	0.0	15.1	2.0
Sawlog	140.0	37.0	211.7	37.8
Top_Pulpwood		37.0		
All Merchantable	340.0	86.1	226.8	39.9

Per Acre				
BA	Trees	PW Tons	Saw Tons	BF
13.7	34.0	9.8		
4.2	6.0	0.0	3.0	406.1
47.6	28.0	7.4	42.3	7,567.2
		7.4		
65.5	68.0	17.2	45.4	7,973.3

Avg. Tree			
Tons/Tree	Bf/Tree	Avg DBH	
0.3		8.6	
0.5	67.7	11.3	
1.5	270.3	17.7	
0.2			
0.9	117.3	13.3	

Value			
\$/Ton	Tons	Stand Tot \$	Per Acre \$
\$9.98	Tons	\$490.31	\$98.06
\$23.00	Tons	\$347.43	\$69.49
\$35.23	Tons	\$7,458.71	\$1,491.74
\$4.00	Tons	\$148.04	\$29.61
\$26.98	Tons	\$8,444.50	\$1,688.90