

# TIMBERLAND SERVICES

Telephone: (229) 407-0208  
408 S. Westover Blvd. Albany, GA 31707  
wes.shiver@gmail.com  
March 7, 2022

Beauchamp Family Holding LLC.  
5017 7<sup>th</sup> Avenue S.  
Birmingham Al, 35212

## **RE: TIMBER INVENTORY REPORT FOR BEAUCHAMP PROPERTY LOCATED IN LEE COUNTY, GEORGIA**

Enclosed are the results of the timber cruise that was requested for the +/- 142 timbered acres on the Beauchamp tract located in Lee County, Georgia. The tract was cruised for estimated timber volume and value. The timber was inventoried using fixed area tenth acre plots. On each sample plot merchantable trees were measured for diameter at breast height, classified by species (pine or hardwood) and product class. One sample plot was installed for every two acres of merchantable timber.

The merchantable timber on the tract has a total estimated value of +/- \$362,452 (\$2,552/acre).

The Upland Pine stand has a total estimated timber value of \$349,666 (\$2,649/acre).

The Natural Pine and Hardwood has a total estimated timber value of \$12,786 (\$1,277/acre)

The cruise was conducted during the months of February and March 2022. Average current timber stumpage values for the area were used in the valuation. Total volume and value summaries for each tract and timber stand are provided.

The acreages were estimated from aerial photography incorporated into a GIS mapping computer program.

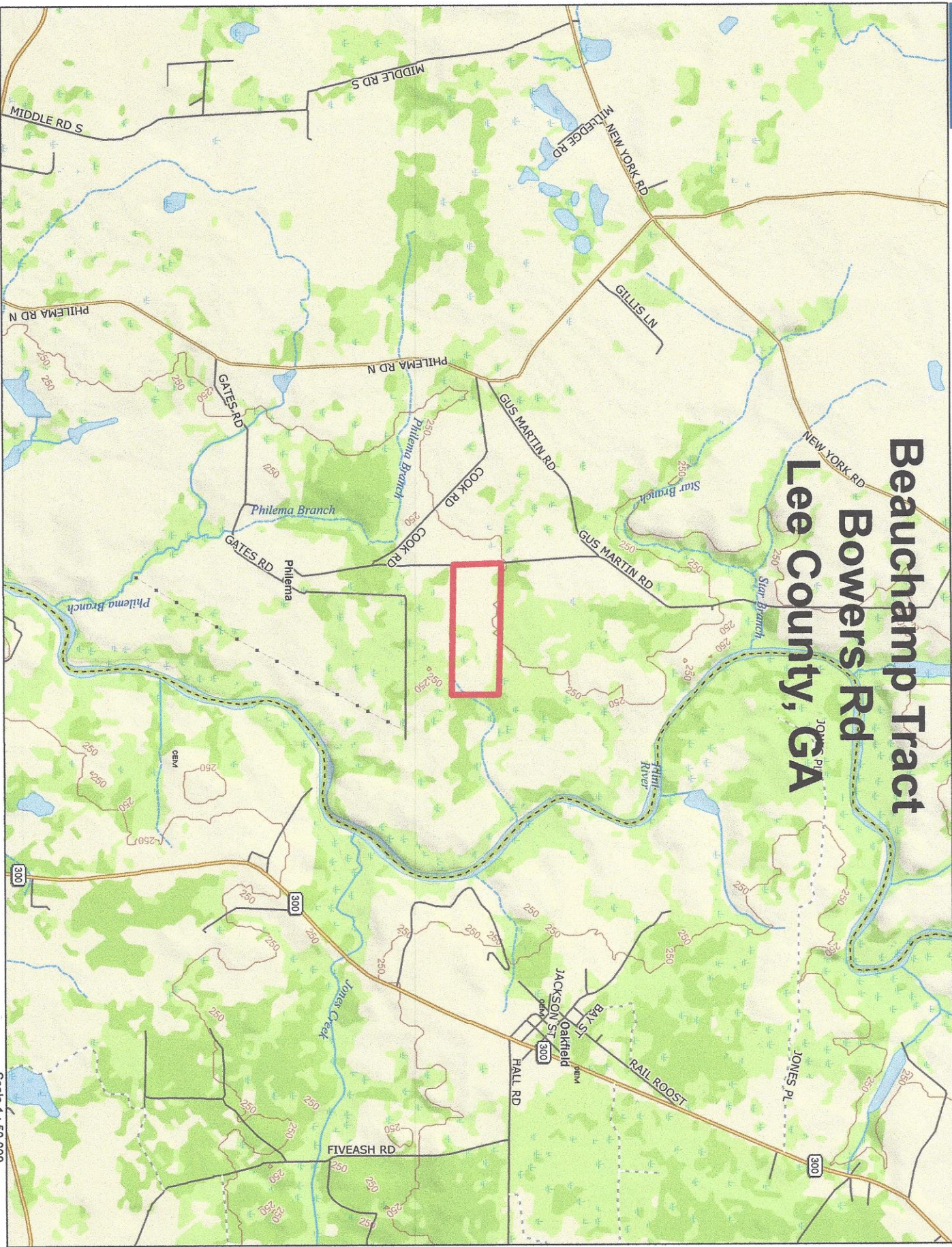
If you have any questions, please contact our office at your convenience.

Sincerely,



Wes Shiver  
Georgia Registered Forester #2809

# Bauchamp Tract Bowers Rd Lee County, GA



Data use subject to license:

© Delorme, XMap® 7.

www.delorme.com

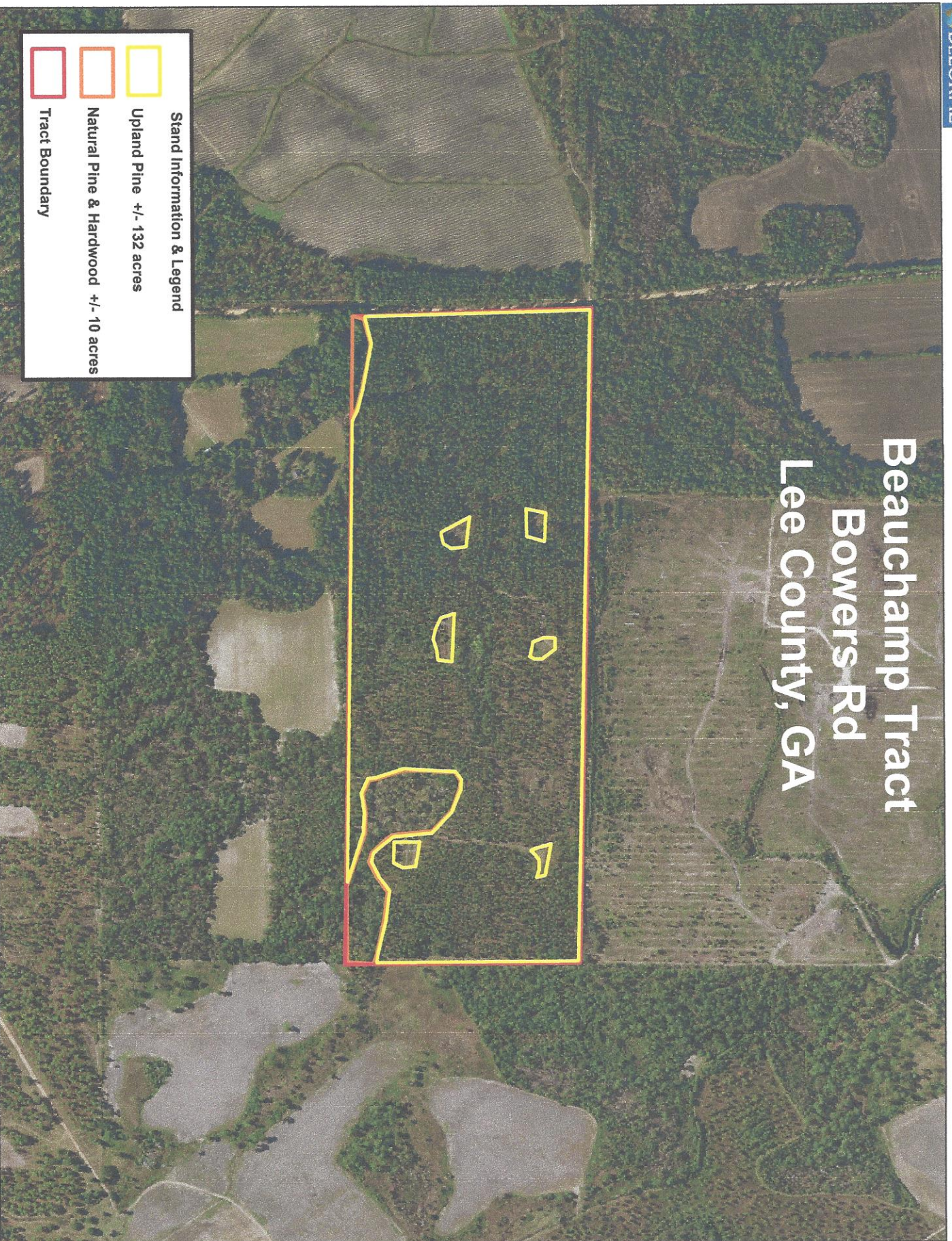


Data Zoom 12-0

# Bauchamp Tract Bowers Rd Lee County, GA

**Stand Information & Legend**

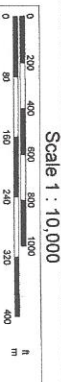
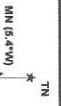
-  Upland Pine +/- 132 acres
-  Natural Pine & Hardwood +/- 10 acres
-  Tract Boundary



Data use subject to license:

© Delorme, XMap® 7.

www.delorme.com



### Tract Value Summary by Group and Product

Number of Stands:	2
Total Acres:	142
Sawlog Vol Units:	Scrib

Tract Name:	Beauchamp
Location:	Lee County, GA
Report Date:	3/7/2022



#### Pine

Tract Total				
Product	Trees	PW Tons	Saw Tons	MBF
Pulpwood	256.0	237.6		
Chip-n-saw	1,078.8	98.1	550.1	71.5
Poles	212.9	24.3	248.8	39.7
Sawlog	7,743.2	1,169.8	6,947.1	1,078.9
Top_Pulpwood		1,292.2		
All Merchantable	9,291.0	1,529.8	7,746.0	1,190.1

Per Acre				
BA	Trees	PW Tons	Saw Tons	BF
1.7	1.8	1.7		
4.9	7.6	0.7	3.9	503.7
1.8	1.5	0.2	1.8	279.3
56.7	54.5	8.2	48.9	7,597.8
		9.1		
65.1	65.4	10.8	54.5	8,380.8

Avg. Tree			
Tons/Tree	BF/Tree	Avg DBH	
0.9		13.2	
0.5		66.3	10.9
1.2		186.3	14.8
0.9		139.3	13.8
0.1			
1.0		128.1	13.5

\$/Ton		Value	
Tons	Value	Stand Tot \$	Per Acre \$
\$12.00	Tons	\$2,850.73	\$20.08
\$35.00	Tons	\$19,253.54	\$135.59
\$55.00	Tons	\$13,681.97	\$96.35
\$45.00	Tons	\$312,621.69	\$2,201.56
\$7.00	Tons	\$9,045.41	\$63.70
\$38.54	Tons	\$357,453.31	\$2,517.28

#### Oak

Tract Total				
Product	Trees	PW Tons	Saw Tons	MBF
Sawlog	14.3	0.0	22.4	3.4
All Merchantable	14.3	0.0	22.4	3.4

Per Acre				
BA	Trees	PW Tons	Saw Tons	BF
0.2	0.1	0.0	0.2	24.3
0.2	0.1	0.0	0.2	24.3

Avg. Tree			
Tons/Tree	BF/Tree	Avg DBH	
1.6		241.4	19.0
1.6		241.4	19.0

\$/Ton		Value	
Tons	Value	Stand Tot \$	Per Acre \$
\$30.00	Tons	\$671.55	\$4.73
\$30.00	Tons	\$671.55	\$4.73

#### Misc. Hardwood

Tract Total				
Product	Trees	PW Tons	Saw Tons	MBF
Pulpwood	428.6	159.5		
Palletwood	14.3	0.0	10.0	1.6
Sawlog	42.9	0.0	64.2	11.7
All Merchantable	485.7	159.5	74.2	13.3

Per Acre				
BA	Trees	PW Tons	Saw Tons	BF
1.5	3.0	1.1		
0.1	0.1	0.0	0.1	11.1
0.6	0.3	0.0	0.5	82.7
2.2	3.4	1.1	0.5	93.8

Avg. Tree			
Tons/Tree	BF/Tree	Avg DBH	
0.4		9.6	
0.7		110.4	14.0
1.5		273.9	19.1
0.5		27.4	10.9

\$/Ton		Value	
Tons	Value	Stand Tot \$	Per Acre \$
\$7.00	Tons	\$1,116.65	\$7.86
\$12.00	Tons	\$119.55	\$0.84
\$30.00	Tons	\$1,925.98	\$13.56
\$13.53	Tons	\$3,162.18	\$22.27

#### Cypress

Tract Total				
Product	Trees	PW Tons	Saw Tons	MBF
Pulpwood	171.4	93.7		
Sawlog	42.9	0.0	46.6	8.0
All Merchantable	214.3	93.7	46.6	8.0

Per Acre				
BA	Trees	PW Tons	Saw Tons	BF
0.8	1.2	0.7		
0.4	0.3	0.0	0.3	56.2
1.3	1.5	0.7	0.3	56.2

Avg. Tree			
Tons/Tree	BF/Tree	Avg DBH	
0.5		11.3	
1.1	186.3	16.4	
0.7	37.3	12.5	

\$/Ton		Value	
	Tons	Stand Tot \$	Per Acre \$
\$0.00	Tons	\$0.00	\$0.00
\$25.00	Tons	\$1,165.28	\$8.21
\$8.31	Tons	\$1,165.28	\$8.21

**All Species Group**

Tract Total				
Product	Trees	PW Tons	Saw Tons	MBF
Pulpwood	856.0	490.7		
Chip-n-saw	1,093.1	98.1	560.1	73.1
Poles	212.9	24.3	248.8	39.7
Sawlog	7,843.2	1,169.8	7,080.3	1,102.1
Top_Pulpwood		1,292.2		
All Merchantable	10,005.3	1,782.9	7,889.2	1,214.8

Per Acre				
BA	Trees	PW Tons	Saw Tons	BF
4.1	6.0	3.5		
5.0	7.7	0.7	3.9	514.8
1.8	1.5	0.2	1.8	279.3
57.9	55.2	8.2	49.9	7,760.9
		9.1		
68.8	70.5	12.6	55.6	8,555.1

Avg. Tree			
Tons/Tree	BF/Tree	Avg DBH	
0.6		11.1	
0.5	66.9	11.0	
1.2	186.3	14.8	
0.9	140.5	13.9	
0.1			
1.0	121.4	13.4	

\$/Ton		Value	
	Tons	Stand Tot \$	Per Acre \$
\$8.08	Tons	\$3,967.38	\$27.94
\$34.59	Tons	\$19,373.06	\$136.43
\$55.00	Tons	\$13,681.97	\$96.35
\$44.68	Tons	\$316,384.50	\$2,228.06
\$7.00	Tons	\$9,045.41	\$63.70
\$37.47	Tons	\$362,452.32	\$2,552.48

**Stand Value Summary by Group and Product**

Sampling Method:	Plot	Tract Name:	Beauchamp
BAF / Plot Size:	0.1	Stand ID:	Upland Pine
Stand Acres:	132.0	Location:	Lee County, GA
Cruiser:	Timberland Services	Date Cruised:	3/3/2022
		Saw Volume Unit	Scrib



**Pine**

Stand Total				Per Acre				Avg. Tree				Value				
Product	Trees	PW Tons	Saw Tons	MBF	BA	Trees	PW Tons	Saw Tons	BF	Tons/Tree	BF/Tree	Avg DBH	\$/Ton	Tons	Stand Tot \$	Per Acre \$
Pulpwood	170.3	147.5			1.2	1.3	1.1			0.9		12.8	\$12.00	Tons	\$1,769.71	\$13.41
Chip-n-saw	1,064.5	95.3	543.1	70.5	5.2	8.1	0.7	4.1	534.1	0.5	66.2	10.9	\$35.00	Tons	\$19,009.69	\$144.01
Poles	212.9	24.3	248.8	39.7	1.9	1.6	0.2	1.9	300.5	1.2	186.3	14.8	\$55.00	Tons	\$13,681.97	\$103.65
Sawlog	7,643.2	1,151.8	6,806.8	1,054.7	59.9	57.9	8.7	51.6	7,990.5	0.9	138.0	13.8	\$45.00	Tons	\$306,305.56	\$2,320.50
Top_Pulpwood		1,271.3					9.6			0.1			\$7.00	Tons	\$8,899.36	\$67.42
All Merchantable	9,091.0	1,418.8	7,598.7	1,164.9	68.2	68.9	10.7	57.6	8,825.1	1.0	128.1	13.5	\$38.78	Tons	\$349,666.29	\$2,648.99

**All Species Group**

Stand Total				Per Acre				Avg. Tree				Value				
Product	Trees	PW Tons	Saw Tons	MBF	BA	Trees	PW Tons	Saw Tons	BF	Tons/Tree	BF/Tree	Avg DBH	\$/Ton	Tons	Stand Tot \$	Per Acre \$
Pulpwood	170.3	147.5			1.2	1.3	1.1			0.9		12.8	\$12.00	Tons	\$1,769.71	\$13.41
Chip-n-saw	1,064.5	95.3	543.1	70.5	5.2	8.1	0.7	4.1	534.1	0.5	66.2	10.9	\$35.00	Tons	\$19,009.69	\$144.01
Poles	212.9	24.3	248.8	39.7	1.9	1.6	0.2	1.9	300.5	1.2	186.3	14.8	\$55.00	Tons	\$13,681.97	\$103.65
Sawlog	7,643.2	1,151.8	6,806.8	1,054.7	59.9	57.9	8.7	51.6	7,990.5	0.9	138.0	13.8	\$45.00	Tons	\$306,305.56	\$2,320.50
Top_Pulpwood		1,271.3					9.6			0.1			\$7.00	Tons	\$8,899.36	\$67.42
All Merchantable	9,091.0	1,418.8	7,598.7	1,164.9	68.2	68.9	10.7	57.6	8,825.1	1.0	128.1	13.5	\$38.78	Tons	\$349,666.29	\$2,648.99

### Stand Summary by Group, Product and DBH

Sampling Method:	Plot
BAF / Plot Size:	0.1
Stand Acres:	132.0
Cruiser:	Timberland Services

Tract Name:	Beauchamp
Stand ID:	Upland Pine
Location:	Lee County, GA
Date Cruised:	3/3/2022
Sawlog Vol Units:	Scrib



#### Pine

Stand Total				
DBH	Trees	PW Tons	Saw Tons	MBF
11	21.3	11.7		
12	42.6	30.3		
13	85.2	79.7		
15	21.3	25.7		
<b>Pulpwood Total</b>	<b>170.3</b>	<b>147.5</b>		

Per Acre				
BA	Trees	PW Tons	Saw Tons	BF
0.11	0.2	0.09		
0.25	0.3	0.23		
0.59	0.6	0.60		
0.20	0.2	0.20		
<b>1.15</b>	<b>1.3</b>	<b>1.12</b>		

Avg. Tree	
Tons/Tree	BF/Tree
0.550	
0.712	
0.936	
1.209	
<b>8.330</b>	

Avg. Heights		
Hs	Hp	Hm
	45.5	45.5
	53.0	53.0
	62.0	62.0
	57.5	57.5
	<b>57.1</b>	<b>57.1</b>

Stand Total				
DBH	Trees	PW Tons	Saw Tons	MBF
9	21.3	1.0	7.2	0.7
10	85.2	6.1	35.6	4.2
11	958.1	88.1	500.3	65.5
<b>Chip-n-saw Total</b>	<b>1,064.5</b>	<b>95.3</b>	<b>543.1</b>	<b>70.5</b>

Per Acre				
BA	Trees	PW Tons	Saw Tons	BF
0.07	0.2	0.01	0.05	5.67
0.35	0.6	0.05	0.27	31.82
4.80	7.3	0.67	3.79	496.57
<b>5.22</b>	<b>8.1</b>	<b>0.72</b>	<b>4.11</b>	<b>534.06</b>

Tons/Tree		BF/Tree
0.339		35.123
0.418		49.327
0.522		68.416
<b>0.510</b>		<b>66.223</b>

Hs	Hp	Hm
40.5	57.8	57.8
40.8	61.6	61.6
42.1	65.3	65.3
<b>42.0</b>	<b>64.8</b>	<b>64.8</b>

Stand Total				
DBH	Trees	PW Tons	Saw Tons	MBF
14	127.7	12.6	129.9	19.9
15	21.3	3.0	24.6	4.0
16	42.6	5.5	59.8	9.9
17	21.3	3.2	34.5	5.9
<b>Poles Total</b>	<b>212.9</b>	<b>24.3</b>	<b>248.8</b>	<b>39.7</b>

Per Acre				
BA	Trees	PW Tons	Saw Tons	BF
1.03	1.0	0.10	0.98	151.03
0.20	0.2	0.02	0.19	30.10
0.45	0.3	0.04	0.45	74.79
0.25	0.2	0.02	0.26	44.54
<b>1.94</b>	<b>1.6</b>	<b>0.18</b>	<b>1.88</b>	<b>300.47</b>

Tons/Tree		BF/Tree
1.017		156.062
1.156		186.649
1.404		221.845
1.620		276.173
<b>1.168</b>		<b>186.289</b>

Hs	Hp	Hm
54.8	77.1	77.1
53.5	79.4	79.4
59.0	82.7	82.7
60.5	85.6	85.6
<b>56.1</b>	<b>79.3</b>	<b>79.3</b>

Stand Total				
DBH	Trees	PW Tons	Saw Tons	MBF
12	1,490.3	147.4	986.9	137.5
13	2,448.4	313.7	1,918.3	284.7
14	1,958.7	297.2	1,830.6	285.0
15	872.9	156.7	947.3	153.6
16	553.5	129.3	676.8	114.4
17	149.0	46.6	198.8	35.0
18	149.0	54.1	208.1	37.3
19	21.3	6.8	40.1	7.3
<b>Sawlog Total</b>	<b>7,643.2</b>	<b>1,151.8</b>	<b>6,806.8</b>	<b>1,054.7</b>

Per Acre				
BA	Trees	PW Tons	Saw Tons	BF
8.87	11.3	1.12	7.48	1041.35
17.10	18.5	2.38	14.53	2156.84
15.86	14.8	2.25	13.87	2158.95
8.12	6.6	1.19	7.18	1163.75
5.86	4.2	0.98	5.13	867.01
1.78	1.1	0.35	1.51	264.82
2.00	1.1	0.41	1.58	282.36
0.32	0.2	0.05	0.30	55.45
<b>59.89</b>	<b>57.9</b>	<b>8.73</b>	<b>51.57</b>	<b>7990.53</b>

Tons/Tree		BF/Tree
0.662		92.234
0.783		116.282
0.935		145.495
1.085		175.981
1.223		206.749
1.334		234.552
1.396		250.094
1.882		343.780
<b>0.991</b>		<b>137.998</b>

Hs	Hp	Hm
46.1	69.7	69.7
46.4	72.6	72.6
48.1	75.8	75.8
49.0	77.6	77.6
47.9	79.7	79.7
45.2	80.7	80.7
41.8	76.9	76.9
53.5	87.5	87.5
<b>47.1</b>	<b>74.2</b>	<b>74.2</b>

Group Total				
	9,091.0	1,418.8	7,598.7	1,164.9

Per Acre				
BA	Trees	PW Tons	Saw Tons	BF
68.20	68.9	10.75	57.57	8825.05

Avg. Tree	
Tons/Tree	BF/Tree
0.852	128.139

Avg. Heights		
Hs	Hp	Hm
46.7	72.9	72.9

#### All Species Groups

Stand Total				
-------------	--	--	--	--

Per Acre				
----------	--	--	--	--

Avg. Tree	
-----------	--

Avg. Heights		
--------------	--	--

	DBH	Trees	PW Tons	Saw Tons	MBF
Pulpwood	11	21.3	11.7		
	12	42.6	30.3		
	13	85.2	79.7		
	15	21.3	25.7		
<b>Pulpwood Total</b>		<b>170.3</b>	<b>147.5</b>		

	BA	Trees	PW Tons	Saw Tons	BF
	0.11	0.2	0.09		
	0.25	0.3	0.23		
	0.59	0.6	0.60		
	0.20	0.2	0.20		
	<b>1.15</b>	<b>1.3</b>	<b>1.12</b>		

	Tons/Tree	BF/Tree
	0.550	
	0.712	
	0.936	
	1.209	
	<b>8.330</b>	

	Hs	Hp	Hm
		45.5	45.5
		53.0	53.0
		62.0	62.0
		57.5	57.5
		<b>57.1</b>	<b>57.1</b>

	DBH	Trees	PW Tons	Saw Tons	MBF
Chip-n-saw	9	21.3	1.0	7.2	0.7
	10	85.2	6.1	35.6	4.2
	11	958.1	88.1	500.3	65.5
<b>Chip-n-saw Total</b>		<b>1,064.5</b>	<b>95.3</b>	<b>543.1</b>	<b>70.5</b>

	BA	Trees	PW Tons	Saw Tons	BF
	0.07	0.2	0.01	0.05	5.67
	0.35	0.6	0.05	0.27	31.82
	4.80	7.3	0.67	3.79	496.57
	<b>5.22</b>	<b>8.1</b>	<b>0.72</b>	<b>4.11</b>	<b>534.06</b>

	Tons/Tree	BF/Tree
	0.339	35.123
	0.418	49.327
	0.522	68.416
	<b>0.510</b>	<b>66.223</b>

	Hs	Hp	Hm
	40.5	57.8	57.8
	40.8	61.6	61.6
	42.1	65.3	65.3
	<b>42.0</b>	<b>64.8</b>	<b>64.8</b>

	DBH	Trees	PW Tons	Saw Tons	MBF
Poles	14	127.7	12.6	129.9	19.9
	15	21.3	3.0	24.6	4.0
	16	42.6	5.5	59.8	9.9
	17	21.3	3.2	34.5	5.9
<b>Poles Total</b>		<b>212.9</b>	<b>24.3</b>	<b>248.8</b>	<b>39.7</b>

	BA	Trees	PW Tons	Saw Tons	BF
	1.03	1.0	0.10	0.98	151.03
	0.20	0.2	0.02	0.19	30.10
	0.45	0.3	0.04	0.45	74.79
	0.25	0.2	0.02	0.26	44.54
	<b>1.94</b>	<b>1.6</b>	<b>0.18</b>	<b>1.88</b>	<b>300.47</b>

	Tons/Tree	BF/Tree
	1.017	156.062
	1.156	186.649
	1.404	231.845
	1.620	276.173
	<b>1.168</b>	<b>186.289</b>

	Hs	Hp	Hm
	54.8	77.1	77.1
	53.5	79.4	79.4
	59.0	82.7	82.7
	60.5	85.6	85.6
	<b>56.1</b>	<b>79.3</b>	<b>79.3</b>

	DBH	Trees	PW Tons	Saw Tons	MBF
Sawlog	12	1,490.3	147.4	986.9	137.5
	13	2,448.4	313.7	1,918.3	284.7
	14	1,958.7	297.2	1,830.6	285.0
	15	872.9	156.7	947.3	153.6
	16	553.5	129.3	676.8	114.4
	17	149.0	46.6	198.8	35.0
Sawlog Total	18	149.0	54.1	208.1	37.3
	19	21.3	6.8	40.1	7.3
		<b>7,643.2</b>	<b>1,151.8</b>	<b>6,806.8</b>	<b>1,054.7</b>

	BA	Trees	PW Tons	Saw Tons	BF
	8.87	11.3	1.12	7.48	1041.35
	17.10	18.5	2.38	14.53	2156.84
	15.86	14.8	2.25	13.87	2158.95
	8.12	6.6	1.19	7.18	1163.75
	5.86	4.2	0.98	5.13	867.01
	1.78	1.1	0.35	1.51	264.82
	2.00	1.1	0.41	1.58	282.36
	0.32	0.2	0.05	0.30	55.45
	<b>59.89</b>	<b>57.9</b>	<b>8.73</b>	<b>51.57</b>	<b>7990.53</b>

	Tons/Tree	BF/Tree
	0.662	92.234
	0.783	116.282
	0.935	145.495
	1.085	175.981
	1.223	206.749
	1.334	234.552
	1.396	250.094
	1.882	343.780
	<b>0.891</b>	<b>137.998</b>

	Hs	Hp	Hm
	46.1	69.7	69.7
	46.4	72.6	72.6
	48.1	75.8	75.8
	49.0	77.6	77.6
	47.9	79.7	79.7
	45.2	80.7	80.7
	41.8	76.9	76.9
	53.5	87.5	87.5
	<b>47.1</b>	<b>74.2</b>	<b>74.2</b>

	DBH	Trees	PW Tons	Saw Tons	MBF
<b>Grand Total</b>		<b>9,091.0</b>	<b>1,418.8</b>	<b>7,598.7</b>	<b>1,164.9</b>

	BA	Trees	PW Tons	Saw Tons	BF
	<b>68.20</b>	<b>68.9</b>	<b>10.75</b>	<b>57.57</b>	<b>8825.05</b>

	Tons/Tree	BF/Tree
	<b>0.852</b>	<b>128.139</b>

	Hs	Hp	Hm
	<b>46.7</b>	<b>72.9</b>	<b>72.9</b>



**Stand Value Summary by Group and Product**

Sampling Method:	Plot	Tract Name:	Beauchamp
BAF / Plot Size:	0.1	Stand ID:	Natural Pine & Hardwood
Stand Acres:	10.0	Location:	Lee County, GA
Cruiser:	Timberland Services	Date Cruised:	3/3/2022
		Saw Volume Unit	Scrib



**Pine**

Stand Total				Per Acre				Avg. Tree			Value					
Product	Trees	PW Tons	Saw Tons	MBF	BA	Trees	PW Tons	Saw Tons	BF	Tons/Tree	Bf/Tree	Avg DBH	\$/Ton	Tons	Stand Tot \$	Per Acre \$
Pulpwood	85.7	90.1			9.2	8.6	9.0			1.1		14.0	\$12.00	Tons	\$1,081.01	\$108.10
Chip-n-saw	14.3	2.8	7.0	1.0	1.1	1.4	0.3	0.7	103.6	0.5		12.0	\$35.00	Tons	\$243.82	\$24.38
Sawlog	100.0	18.1	140.4	24.1	14.4	10.0	1.8	14.0	2,413.1	1.4		16.3	\$45.00	Tons	\$6,316.14	\$631.61
Top_Pulpwood		20.9					2.1			0.2			\$7.00	Tons	\$146.05	\$14.61
All Merchantable	200.0	110.9	147.3	25.2	24.7	20.0	11.1	14.7	2,516.7	1.3		15.1	\$30.15	Tons	\$7,787.02	\$778.70

**Oak**

Stand Total				Per Acre				Avg. Tree			Value					
Product	Trees	PW Tons	Saw Tons	MBF	BA	Trees	PW Tons	Saw Tons	BF	Tons/Tree	Bf/Tree	Avg DBH	\$/Ton	Tons	Stand Tot \$	Per Acre \$
Pulpwood	14.3	0.0	22.4	3.4	2.8	1.4	0.0	2.2	344.9	1.6		19.0	\$30.00	Tons	\$671.55	\$67.15
Sawlog					2.8	1.4	0.0	2.2	344.9	1.6		19.0	\$30.00	Tons	\$671.55	\$67.15
All Merchantable	14.3	0.0	22.4	3.4	2.8	1.4	0.0	2.2	344.9	1.6		19.0	\$30.00	Tons	\$671.55	\$67.15

**Misc. Hardwood**

Stand Total				Per Acre				Avg. Tree			Value					
Product	Trees	PW Tons	Saw Tons	MBF	BA	Trees	PW Tons	Saw Tons	BF	Tons/Tree	Bf/Tree	Avg DBH	\$/Ton	Tons	Stand Tot \$	Per Acre \$
Pulpwood	428.6	159.5			21.4	42.9	16.0			0.4		9.6	\$7.00	Tons	\$1,116.65	\$111.67
Palletwood	14.3	0.0	10.0	1.6	1.5	1.4	0.0	1.0	157.7	0.7		14.0	\$12.00	Tons	\$119.55	\$11.96
Sawlog	42.9	0.0	64.2	11.7	8.5	4.3	0.0	6.4	1,173.7	1.5		19.1	\$30.00	Tons	\$1,925.98	\$192.60
All Merchantable	485.7	159.5	74.2	13.3	31.5	48.6	16.0	7.4	1,331.4	0.5		10.9	\$13.53	Tons	\$3,162.18	\$316.22

**Cypress**

Stand Total				Per Acre				Avg. Tree			Value					
Product	Trees	PW Tons	Saw Tons	MBF	BA	Trees	PW Tons	Saw Tons	BF	Tons/Tree	Bf/Tree	Avg DBH	\$/Ton	Tons	Stand Tot \$	Per Acre \$
Pulpwood	171.4	93.7			12.0	17.1	9.4			0.5		11.3	\$0.00	Tons	\$0.00	\$0.00
Sawlog	42.9	0.0	46.6	8.0	6.3	4.3	0.0	4.7	798.4	1.1		16.4	\$25.00	Tons	\$1,165.28	\$116.53
All Merchantable	214.3	93.7	46.6	8.0	18.3	21.4	9.4	4.7	798.4	0.7		12.5	\$8.31	Tons	\$1,165.28	\$116.53

**All Species Group**

Stand Total				
Product	Trees	PW Tons	Saw Tons	MIBF
Pulpwood	685.7	343.3		
Chip-n-saw	28.6	2.8	16.9	2.6
Sawlog	200.0	18.1	273.6	47.3
Top_Pulpwood		20.9		
All Merchantable	914.3	364.1	290.5	49.9

Per Acre				
BA	Trees	PW Tons	Saw Tons	BF
42.6	68.6	34.3		
2.6	2.9	0.3	1.7	261.3
32.1	20.0	1.8	27.4	4,730.1
		2.1		
77.3	91.4	36.4	29.0	4,991.4

Avg. Tree			
Tons/Tree	bf/Tree	Avg DBH	
0.5		10.7	
0.6	91.4	13.0	
1.4	236.5	17.1	
0.1			
0.7	54.6	12.5	

\$/Ton	Value	
	Stand Tot \$	Per Acre \$
\$6.40	\$2,197.67	\$219.77
\$21.46	\$363.37	\$36.34
\$36.84	\$10,078.95	\$1,007.89
\$7.00	\$146.05	\$14.61
\$19.53	\$12,786.04	\$1,278.60

Sampling Method: Plot  
 BAF / Plot Size: 0.1  
 Stand Acres: 10.0  
 Cruiser: Timberland Services

Tract Name: Beauchamp  
 Stand ID: Natural Pine & Hardwood  
 Location: Lee County, GA  
 Date Cruised: 3/3/2022  
 Sawlog Vol Units: Scrib



Stand Summary by Group, Product and DBH

Pine

Stand Total					Per Acre					Avg. Tree			Avg. Heights		
DBH	Trees	PW Tons	Saw Tons	MBF	BA	Trees	PW Tons	Saw Tons	BF	Tons/Tree	BF/Tree	Hs	Hp	Hm	
Pulpwood	6	14.3	1.5		0.28	1.4	0.15			0.107			24.5	24.5	
	8	28.6	8.1		1.00	2.9	0.81			0.283		29.5	62.7	62.7	
	14	14.3	14.8		1.53	1.4	1.48			1.036		42.5	72.0	72.0	
	17	14.3	24.3		2.25	1.4	2.43			1.701		42.5	74.3	74.3	
	23	14.3	41.4		4.12	1.4	4.14			2.895		42.5	78.4	78.4	
<b>Pulpwood Total</b>		<b>85.7</b>	<b>90.1</b>		<b>9.18</b>	<b>8.6</b>	<b>9.01</b>			<b>1.294</b>		<b>51.8</b>	<b>77.9</b>	<b>77.9</b>	

Stand Total					Per Acre					Avg. Tree			Avg. Heights		
DBH	Trees	PW Tons	Saw Tons	MBF	BA	Trees	PW Tons	Saw Tons	BF	Tons/Tree	BF/Tree	Hs	Hp	Hm	
Chip-n-saw	12	14.3	2.8	7.0	1.12	1.4	0.28	0.70	103.61	0.488	72.527	29.5	62.7	62.7	
<b>Chip-n-saw Total</b>		<b>14.3</b>	<b>2.8</b>	<b>7.0</b>	<b>1.12</b>	<b>1.4</b>	<b>0.28</b>	<b>0.70</b>	<b>103.61</b>	<b>0.488</b>	<b>72.527</b>	<b>29.5</b>	<b>62.7</b>	<b>62.7</b>	

Stand Total					Per Acre					Avg. Tree			Avg. Heights		
DBH	Trees	PW Tons	Saw Tons	MBF	BA	Trees	PW Tons	Saw Tons	BF	Tons/Tree	BF/Tree	Hs	Hp	Hm	
Sawlog	12	14.3	2.8	7.0	1.12	1.4	0.28	0.70	103.61	0.488	72.527	29.5	62.7	62.7	
	13	14.3	2.3	10.6	1.32	1.4	0.23	1.06	161.11	0.740	112.777	42.5	72.0	72.0	
	14	14.3	2.8	12.3	1.53	1.4	0.28	1.23	196.88	0.861	137.814	42.5	74.3	74.3	
	16	14.3	4.2	16.1	1.99	1.4	0.42	1.61	278.16	1.130	194.713	42.5	78.4	78.4	
	18	28.6	1.8	57.7	5.05	2.9	0.18	5.77	988.08	2.019	345.828	71.5	82.4	82.4	
	21	14.3	4.2	36.7	3.44	1.4	0.42	3.67	685.29	2.569	479.701	62.5	93.5	93.5	
<b>Sawlog Total</b>		<b>100.0</b>	<b>18.1</b>	<b>140.4</b>	<b>14.45</b>	<b>10.0</b>	<b>1.81</b>	<b>14.04</b>	<b>2413.13</b>	<b>1.404</b>	<b>241.313</b>	<b>51.8</b>	<b>77.9</b>	<b>77.9</b>	
<b>Group Total</b>	<b>200.0</b>	<b>110.9</b>	<b>147.3</b>	<b>25.2</b>	<b>24.75</b>	<b>20.0</b>	<b>11.09</b>	<b>14.73</b>	<b>2516.74</b>	<b>1.187</b>	<b>125.837</b>	<b>49.0</b>	<b>64.4</b>	<b>64.4</b>	

Oak

Stand Total					Per Acre					Avg. Tree			Avg. Heights		
DBH	Trees	PW Tons	Saw Tons	MBF	BA	Trees	PW Tons	Saw Tons	BF	Tons/Tree	BF/Tree	Hs	Hp	Hm	
Sawlog	19	14.3	0.0	22.4	2.81	1.4	0.00	2.24	344.88	1.567	241.418	32.5	32.5	32.5	
<b>Sawlog Total</b>		<b>14.3</b>	<b>0.0</b>	<b>22.4</b>	<b>2.81</b>	<b>1.4</b>	<b>0.00</b>	<b>2.24</b>	<b>344.88</b>	<b>1.567</b>	<b>241.418</b>	<b>32.5</b>	<b>32.5</b>	<b>32.5</b>	
<b>Group Total</b>	<b>14.3</b>	<b>0.0</b>	<b>22.4</b>	<b>3.4</b>	<b>2.81</b>	<b>1.4</b>	<b>0.00</b>	<b>2.24</b>	<b>344.88</b>	<b>1.567</b>	<b>241.418</b>	<b>32.5</b>	<b>32.5</b>	<b>32.5</b>	

Misc. Hardwood

Stand Total		Per Acre		Avg. Tree		Avg. Heights	
Stand Total		Per Acre		Avg. Tree		Avg. Heights	

Pulpwood	DBH	Trees	PW Tons	Saw Tons	MBF	BA	Trees	PW Tons	Saw Tons	BF	Tons/Tree	BF/Tree	Hs	Hp	Hm
	7	85.7	14.1			2.29	8.6	1.41			0.164			28.5	28.5
	8	114.3	27.4			3.99	11.4	2.74			0.239			34.0	34.0
	9	57.1	16.3			2.52	5.7	1.63			0.285			30.5	30.5
	10	85.7	35.6			4.67	8.6	3.56			0.416			38.5	38.5
	12	28.6	16.0			2.24	2.9	1.60			0.561			35.5	35.5
	13	42.9	33.3			3.95	4.3	3.33			0.777			43.8	43.8
	15	14.3	16.8			1.75	1.4	1.68			1.178			52.5	52.5
<b>Pulpwood Total</b>		<b>428.6</b>	<b>159.5</b>			<b>21.43</b>	<b>42.9</b>	<b>15.95</b>			<b>0.372</b>			<b>35.0</b>	<b>35.0</b>

Palletwood	DBH	Trees	PW Tons	Saw Tons	MBF	BA	Trees	PW Tons	Saw Tons	BF	Tons/Tree	BF/Tree	Hs	Hp	Hm
	14	14.3	0.0	10.0	1.6	1.53	1.4	0.00	1.00	157.68	0.697	110.373	30.5	30.5	30.5
<b>Palletwood Total</b>		<b>14.3</b>	<b>0.0</b>	<b>10.0</b>	<b>1.6</b>	<b>1.53</b>	<b>1.4</b>	<b>0.00</b>	<b>1.00</b>	<b>157.68</b>	<b>0.697</b>	<b>110.373</b>	<b>30.5</b>	<b>30.5</b>	<b>30.5</b>

Sawlog	DBH	Trees	PW Tons	Saw Tons	MBF	BA	Trees	PW Tons	Saw Tons	BF	Tons/Tree	BF/Tree	Hs	Hp	Hm
	14	14.3	0.0	10.4	1.6	1.53	1.4	0.00	1.04	163.17	0.731	114.216	32.5	32.5	32.5
	18	14.3	0.0	17.3	3.0	2.52	1.4	0.00	1.73	303.47	1.211	212.431	32.5	32.5	32.5
	24	14.3	0.0	36.5	7.1	4.49	1.4	0.00	3.65	707.11	2.552	494.975	40.5	40.5	40.5
<b>Sawlog Total</b>		<b>42.9</b>	<b>0.0</b>	<b>64.2</b>	<b>11.7</b>	<b>8.54</b>	<b>4.3</b>	<b>0.00</b>	<b>6.42</b>	<b>1173.75</b>	<b>1.498</b>	<b>273.874</b>	<b>35.2</b>	<b>35.2</b>	<b>35.2</b>

Group Total	DBH	Trees	PW Tons	Saw Tons	MBF	BA	Trees	PW Tons	Saw Tons	BF	Tons/Tree	BF/Tree	Hs	Hp	Hm
		485.7	159.5	74.2	13.3	31.49	48.6	15.95	7.42	1331.42	0.481	27.412	34.0	34.9	34.9

**Cypress**

Pulpwood	DBH	Trees	PW Tons	Saw Tons	MBF	BA	Trees	PW Tons	Saw Tons	BF	Tons/Tree	BF/Tree	Hs	Hp	Hm
	7	28.6	4.2			0.76	2.9	0.42			0.146			24.5	24.5
	8	14.3	3.8			0.50	1.4	0.38			0.269			40.5	40.5
	11	42.9	24.0			2.83	4.3	2.40			0.561			46.2	46.2
	12	28.6	17.9			2.24	2.9	1.79			0.625			41.5	41.5
	13	28.6	17.5			2.63	2.9	1.75			0.613			32.5	32.5
	14	28.6	26.3			3.05	2.9	2.63			0.919			46.0	46.0
<b>Pulpwood Total</b>		<b>171.4</b>	<b>93.7</b>			<b>12.02</b>	<b>17.1</b>	<b>9.37</b>			<b>0.546</b>			<b>39.0</b>	<b>39.0</b>

Sawlog	DBH	Trees	PW Tons	Saw Tons	MBF	BA	Trees	PW Tons	Saw Tons	BF	Tons/Tree	BF/Tree	Hs	Hp	Hm
	15	14.3	0.0	11.8	1.9	1.75	1.4	0.00	1.18	194.44	0.825	136.110	32.5	32.5	32.5
	17	28.6	0.0	34.8	6.0	4.50	2.9	0.00	3.48	603.93	1.219	211.377	39.5	39.5	39.5
<b>Sawlog Total</b>		<b>42.9</b>	<b>0.0</b>	<b>46.6</b>	<b>8.0</b>	<b>6.26</b>	<b>4.3</b>	<b>0.00</b>	<b>4.66</b>	<b>798.38</b>	<b>1.088</b>	<b>186.288</b>	<b>37.2</b>	<b>37.2</b>	<b>37.2</b>

**All Species Groups**

Pulpwood	DBH	Trees	PW Tons	Saw Tons	MBF	BA	Trees	PW Tons	Saw Tons	BF	Tons/Tree	BF/Tree	Hs	Hp	Hm
	6	14.3	1.5			0.28	1.4	0.15			0.107			24.5	24.5
	7	114.3	18.3			3.05	11.4	1.83			0.160			27.5	27.5
	8	157.1	39.3			5.49	15.7	3.93			0.250			36.6	36.6

	9	57.1	16.3		
	10	85.7	35.6		
	11	42.9	24.0		
	12	57.1	33.9		
	13	71.4	50.8		
	14	42.9	41.1		
	15	14.3	16.8		
	17	14.3	24.3		
	23	14.3	41.4		
<b>Pulpwood Total</b>		<b>685.7</b>	<b>343.3</b>		

	2.52	5.7	1.63		
	4.67	8.6	3.56		
	2.83	4.3	2.40		
	4.49	5.7	3.39		
	6.58	7.1	5.08		
	4.58	4.3	4.11		
	1.75	1.4	1.68		
	2.25	1.4	2.43		
	4.12	1.4	4.14		
	<b>42.63</b>	<b>68.6</b>	<b>34.33</b>		

	0.285				
	0.416				
	0.561				
	0.593				
	0.711				
	0.958				
	1.178				
	1.701				
	2.895				
	<b>0.531</b>				

		30.5	30.5		
		38.5	38.5		
		46.2	46.2		
		38.5	38.5		
		39.3	39.3		
		49.5	49.5		
		52.5	52.5		
		65.5	65.5		
		56.5	56.5		
		<b>37.8</b>	<b>37.8</b>		

	DBH	Trees	PW Tons	Saw Tons	MBF
Chip-n-saw	12	14.3	2.8	7.0	1.0
	14	14.3	0.0	10.0	1.6
<b>Chip-n-saw Total</b>		<b>28.6</b>	<b>2.8</b>	<b>16.9</b>	<b>2.6</b>

	BA	Trees	PW Tons	Saw Tons	BF
	1.12	1.4	0.28	0.70	103.61
	1.53	1.4	0.00	1.00	157.68
	<b>2.65</b>	<b>2.9</b>	<b>0.28</b>	<b>1.69</b>	<b>261.29</b>

	Tons/Tree	BF/Tree
	0.488	72.527
	0.697	110.373
	<b>0.593</b>	<b>91.450</b>

	Hs	Hp	Hm
	29.5	62.7	62.7
	30.5	30.5	30.5
	<b>30.0</b>	<b>46.6</b>	<b>46.6</b>

	DBH	Trees	PW Tons	Saw Tons	MBF
Sawlog	12	14.3	2.8	7.0	1.0
	13	14.3	2.3	10.6	1.6
	14	28.6	2.8	22.7	3.6
	15	14.3	0.0	11.8	1.9
	16	14.3	4.2	16.1	2.8
	17	28.6	0.0	34.8	6.0
	18	42.9	1.8	75.0	12.9
	19	14.3	0.0	22.4	3.4
	21	14.3	4.2	36.7	6.9
	24	14.3	0.0	36.5	7.1
<b>Sawlog Total</b>		<b>200.0</b>	<b>18.1</b>	<b>273.6</b>	<b>47.3</b>

	BA	Trees	PW Tons	Saw Tons	BF
	1.12	1.4	0.28	0.70	103.61
	1.32	1.4	0.23	1.06	161.11
	3.05	2.9	0.28	2.27	360.04
	1.75	1.4	0.00	1.18	194.44
	1.99	1.4	0.42	1.61	278.16
	4.50	2.9	0.00	3.48	603.93
	7.57	4.3	0.18	7.50	1291.55
	2.81	1.4	0.00	2.24	344.88
	3.44	1.4	0.42	3.67	685.29
	4.49	1.4	0.00	3.65	707.11
	<b>32.05</b>	<b>20.0</b>	<b>1.81</b>	<b>27.36</b>	<b>4730.13</b>

	Tons/Tree	BF/Tree
	0.488	72.527
	0.740	112.777
	0.796	126.015
	0.825	136.110
	1.130	194.713
	1.219	211.377
	1.750	301.362
	1.567	241.418
	2.569	479.701
	2.552	494.975
	<b>1.368</b>	<b>236.507</b>

	Hs	Hp	Hm
	29.5	62.7	62.7
	42.5	72.0	72.0
	37.5	53.4	53.4
	32.5	32.5	32.5
	42.5	78.4	78.4
	39.5	39.5	39.5
	58.5	65.7	65.7
	32.5	32.5	32.5
	62.5	93.5	93.5
	40.5	40.5	40.5
	<b>43.7</b>	<b>56.8</b>	<b>56.8</b>

	DBH	Trees	PW Tons	Saw Tons	MBF
<b>Grand Total</b>		<b>914.3</b>	<b>364.1</b>	<b>290.5</b>	<b>49.9</b>

	BA	Trees	PW Tons	Saw Tons	BF
	<b>77.33</b>	<b>91.4</b>	<b>36.41</b>	<b>29.05</b>	<b>4991.42</b>

	Tons/Tree	BF/Tree
	<b>0.693</b>	<b>54.594</b>

	Hs	Hp	Hm
	<b>42.0</b>	<b>42.2</b>	<b>42.2</b>