

# TIMBERLAND SERVICES

Telephone: (229) 407-0208  
408 S. Westover Blvd. Albany, GA 31707  
wes.shiver@gmail.com  
February 18, 2022

Seaton Family Trust  
Mr. Keith A. O'Daniel  
9040 Roswell Road, Suite 500  
Sandy Springs, GA 30350

## **RE: TIMBER INVENTORY REPORT FOR SEATON FAMILY TRUST PROPERTY LOCATED IN LEE COUNTY, GEORGIA**

Mr O'Daniel,

Enclosed are the results of the timber cruise that was requested for the +/- 281 timbered acres on the Seaton Family Trust tract located in Lee County, Georgia. The tract was cruised for estimated timber volume and value. The timber was inventoried using fixed area tenth acre plots. On each sample plot merchantable trees were measured for diameter at breast height, classified by species (pine or hardwood) and product class. One sample plot was installed for every two acres of merchantable timber.

The merchantable timber on the tract has a total estimated value of +/- \$334,881.

Tract 1 has an estimated merchantable timber value of +/- \$69,208.

Tract 2 has an estimated merchantable timber value of +/- \$61,333. Tract 2 has +/- 3 acres of pre-merchantable planted slash pine with an estimated net present value of +/- \$2,457. Wynyield growth and yield model was used to project the growth of the pre-merchantable pine stand and discount future harvest revenues into an estimate of net present value. A pre tax discount rate of 7% and current stumpage values were used in the valuation. Tract 2 has a substantial amount of hardwood bottom that was not cruised. These stands are comprised primarily of live oak and have little to no timber value.

Tract 3 has an estimated merchantable timber value of +/- \$162,595.

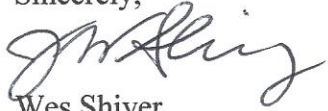
Tracts 4-7 were cruised as one tract due to their size. They have a combined estimated merchantable timber value of +/- \$41,745.

The cruise was conducted during the month of February 2022. Average current timber stumpage values for the area were used in the valuation. Total volume and value summaries for each tract and timber stand are provided.

The acreages were estimated from aerial photography incorporated into a GIS mapping computer program.

If you have any questions, please contact our office at your convenience.

Sincerely,

A handwritten signature in black ink, appearing to read 'Wes Shiver', written in a cursive style.

Wes Shiver

Georgia Registered Forester #2809

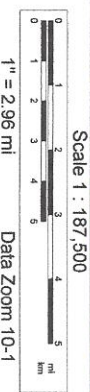
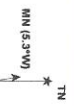
# Seaton Family Trust Lee County, GA



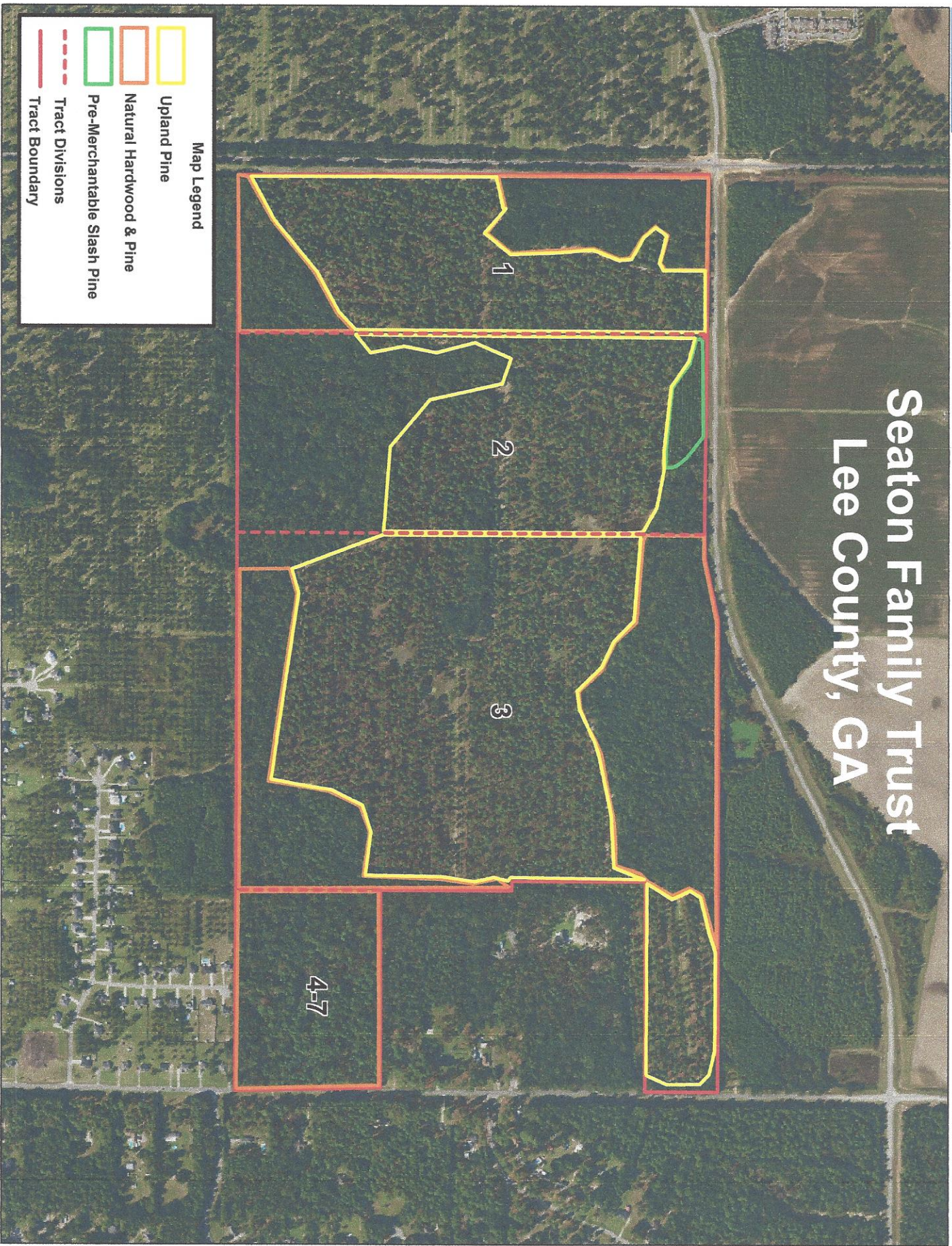
Data use subject to license.

© Delorme, XMap® 7.

www.delorme.com



# Seaton Family Trust Lee County, GA



**Map Legend**

- Upland Pine
- Natural Hardwood & Pine
- Pre-Merchantable Slash Pine
- Tract Divisions
- Tract Boundary

Data use subject to license.

© DeLorme, XMap® 7.

www.delorme.com



Scale 1 : 10,000



Number of Stands:	2
# Plots/points:	35
Total Acres:	69
Sawlog Vol Units:	Scrib

Tract Name:	Seaton Family Trust Tract 1
Location:	Lee County, GA
Report Date:	2/18/2022

**Tract Value Summary by Group and Product**



**Pine**

Tract Total			
Product	Trees	PW Tons	Saw Tons
Pulpwood	237.8	236.0	
Sawlog	1,177.0	634.6	1,137.7
Top Pulpwood		634.6	
All Merchantable	1,414.8	870.5	1,137.7

Per Acre			
BA	Trees	PW Tons	Saw Tons
BA	3.8	3.4	3.4
	29.0	17.1	9.2
		9.2	16.5
	32.8	20.5	12.6
			16.5

Avg. Tree		
Tons/Tree	BF/Tree	Avg DBH
1.0		14.3
1.0		17.6
0.5		
1.4		17.1

\$/Ton		Value	
Tons	Stand Tot \$	Tons	Per Acre \$
\$12.00	\$2,831.80	\$50.00	\$41.04
\$50.00	\$56,882.88	\$8.00	\$824.39
\$8.00	\$5,076.49	\$32.26	\$73.57
			\$939.00

**Oak**

Tract Total			
Product	Trees	PW Tons	Saw Tons
Sawlog	20.0	0.0	67.4
All Merchantable	20.0	0.0	67.4

Per Acre			
BA	Trees	PW Tons	Saw Tons
BA	1.5	0.3	0.0
	1.5	0.3	0.0
			1.0
			1.0

Avg. Tree		
Tons/Tree	BF/Tree	Avg DBH
3.4		31.0
3.4		31.0

\$/Ton		Value	
Tons	Stand Tot \$	Tons	Per Acre \$
\$35.00	\$2,360.60	\$35.00	\$34.21
			\$2,360.60

**Misc. Hardwood**

Tract Total			
Product	Trees	PW Tons	Saw Tons
Pulpwood	440.0	228.5	
Palletwood	40.0	0.0	16.0
Sawlog	20.0	0.0	7.6
All Merchantable	500.0	228.5	23.6

Per Acre			
BA	Trees	PW Tons	Saw Tons
BA	4.3	6.4	3.3
	0.4	0.6	0.0
	0.3	0.3	0.0
	5.0	7.2	3.3
			0.3

Avg. Tree		
Tons/Tree	BF/Tree	Avg DBH
0.5		11.2
0.4		11.5
0.4		13.0
0.5		11.3

\$/Ton		Value	
Tons	Stand Tot \$	Tons	Per Acre \$
\$7.00	\$1,599.57	\$12.00	\$23.18
\$12.00	\$192.36	\$35.00	\$2.79
\$35.00	\$264.28	\$8.16	\$3.83
			\$2,056.20
			\$29.80

**All Species Group**

Tract Total			
Product	Trees	PW Tons	Saw Tons

Per Acre			
BA	Trees	PW Tons	Saw Tons
BA			

Avg. Tree		
Tons/Tree	BF/Tree	Avg DBH

\$/Ton		Value	
Tons	Stand Tot \$	Tons	Per Acre \$

Pulpwood	677.8	464.5			
Chip-n-saw	40.0	0.0	16.0		2.3
Sawlog	1,217.0	634.6	1,212.7		214.7
Top_Pulpwood		634.6			
All Merchantable	1,934.8	1,099.1	1,228.7		217.1

	8.2	9.8	6.7		
	0.4	0.6	0.0	0.2	33.5
	30.8	17.6	9.2	17.6	3,112.2
			9.2		
	39.3	28.0	15.9	17.8	3,145.8

	0.7			12.4	
	0.4	57.9		11.5	
	1.0	176.5		17.9	
	0.5				
	1.2	112.2		16.0	

	\$9.54			Tons	
	\$12.00			Tons	
	\$49.07			Tons	
	\$8.00			Tons	
	\$29.73			Tons	

	\$4,431.37	\$64.22
	\$192.36	\$2.79
	\$59,507.75	\$862.43
	\$5,076.49	\$73.57
	\$69,207.96	\$1,003.01

**Stand Value Summary by Group and Product**

Sampling Method:	Pilot	Tract Name:	Seaton Family Trust Tract 1
BAF / Plot Size:	0.1	Stand ID:	Upland Pine
# Plots/points:	23	Location:	Lee County, GA
Stand Acres:	45.0	Date Cruised:	2/18/2022
Cruiser:	Timberland Services	Saw Volume Unit	Scrib



**Pine**

Stand Total				Per Acre				Avg. Tree			Value					
Product	Trees	PW Tons	Saw Tons	MBF	BA	Trees	PW Tons	Saw Tons	BF	Tons/Tree	BF/Tree	Avg DBH	\$/Ton	Tons	Stand Tot \$	Per Acre \$
Pulpwood	97.8	103.6			2.8	2.2	2.3			1.1		15.3	\$12.00	Tons	\$1,242.94	\$27.62
Sawlog	1,037.0	588.5	1,018.6	182.4	40.5	23.0	13.1	22.6	4,052.7	1.0	175.9	17.9	\$50.00	Tons	\$50,931.22	\$1,131.80
Top_Pulpwood		588.5					13.1			0.6			\$8.00	Tons	\$4,707.67	\$104.61
All Merchantable	1,134.8	692.0	1,018.6	182.4	43.3	25.2	15.4	22.6	4,052.7	1.5	160.7	17.7	\$33.25	Tons	\$56,881.82	\$1,264.04

**All Species Group**

Stand Total				Per Acre				Avg. Tree			Value					
Product	Trees	PW Tons	Saw Tons	MBF	BA	Trees	PW Tons	Saw Tons	BF	Tons/Tree	BF/Tree	Avg DBH	\$/Ton	Tons	Stand Tot \$	Per Acre \$
Pulpwood	97.8	103.6			2.8	2.2	2.3			1.1		15.3	\$12.00	Tons	\$1,242.94	\$27.62
Sawlog	1,037.0	588.5	1,018.6	182.4	40.5	23.0	13.1	22.6	4,052.7	1.0	175.9	17.9	\$50.00	Tons	\$50,931.22	\$1,131.80
Top_Pulpwood		588.5					13.1			0.6			\$8.00	Tons	\$4,707.67	\$104.61
All Merchantable	1,134.8	692.0	1,018.6	182.4	43.3	25.2	15.4	22.6	4,052.7	1.5	160.7	17.7	\$33.25	Tons	\$56,881.82	\$1,264.04

**Stand Value Summary by Group and Product**

Sampling Method:	Plot	Tract Name:	Seaton Family Trust Tract 1
BAF / Plot Size:	0.1	Stand ID:	Natural Hardwood & Pine
# Plots/points:	12	Location:	Lee County, GA
Stand Acres:	24.0	Date Cruised:	2/18/2022
Cruiser:	Timberland Services	Saw Volume Unit	Scrib



**Pine**

Stand Total				Per Acre				Avg. Tree				Value				
Product	Trees	PW Tons	Saw Tons	MBF	BA	Trees	PW Tons	Saw Tons	BF	Tons/Tree	Bf/Tree	Avg DBH	\$/Ton	Tons	Stand Tot \$	Per Acre \$
Pulpwood	140.0	132.4			5.8	5.8	5.5			0.9		13.5	\$12.00	Tons	\$1,588.86	\$66.20
Sawlog	140.0	46.1	119.0	19.6	7.4	5.8	1.9	5.0	816.7	0.9	140.0	15.3	\$50.00	Tons	\$5,951.66	\$247.99
Top_Pulpwood		46.1					1.9			0.3			\$8.00	Tons	\$368.82	\$15.37
All Merchantable	280.0	178.5	119.0	19.6	13.2	11.7	7.4	5.0	816.7	1.1	70.0	14.4	\$26.58	Tons	\$7,909.34	\$329.56

**Oak**

Stand Total				Per Acre				Avg. Tree				Value				
Product	Trees	PW Tons	Saw Tons	MBF	BA	Trees	PW Tons	Saw Tons	BF	Tons/Tree	Bf/Tree	Avg DBH	\$/Ton	Tons	Stand Tot \$	Per Acre \$
Sawlog	20.0	0.0	67.4	11.6	4.4	0.8	0.0	2.8	483.8	3.4	580.6	31.0	\$35.00	Tons	\$2,360.60	\$98.36
All Merchantable	20.0	0.0	67.4	11.6	4.4	0.8	0.0	2.8	483.8	3.4	580.6	31.0	\$35.00	Tons	\$2,360.60	\$98.36

**Misc. Hardwood**

Stand Total				Per Acre				Avg. Tree				Value				
Product	Trees	PW Tons	Saw Tons	MBF	BA	Trees	PW Tons	Saw Tons	BF	Tons/Tree	Bf/Tree	Avg DBH	\$/Ton	Tons	Stand Tot \$	Per Acre \$
Pulpwood	440.0	228.5			12.4	18.3	9.5			0.5		11.2	\$7.00	Tons	\$1,599.57	\$66.65
Palletwood	40.0	0.0	16.0	2.3	1.2	1.7	0.0	0.7	96.5	0.4	57.9	11.5	\$12.00	Tons	\$192.36	\$8.01
Sawlog	20.0	0.0	7.6	1.2	0.8	0.8	0.0	0.3	48.2	0.4	57.9	13.0	\$35.00	Tons	\$164.28	\$11.01
All Merchantable	500.0	228.5	23.6	3.5	14.4	20.8	9.5	1.0	144.7	0.5	6.9	11.3	\$8.16	Tons	\$2,056.20	\$85.68

**All Species Group**

Stand Total				Per Acre				Avg. Tree				Value				
Product	Trees	PW Tons	Saw Tons	MBF	BA	Trees	PW Tons	Saw Tons	BF	Tons/Tree	Bf/Tree	Avg DBH	\$/Ton	Tons	Stand Tot \$	Per Acre \$
Pulpwood	580.0	360.9			18.3	24.2	15.0			0.6		11.8	\$8.83	Tons	\$3,188.43	\$132.85
Chip-n-saw	40.0	0.0	16.0	2.3	1.2	1.7	0.0	0.7	96.5	0.4	57.9	11.5	\$12.00	Tons	\$192.36	\$8.01
Sawlog	180.0	46.1	194.0	32.4	12.5	7.5	1.9	8.1	1,348.7	1.1	179.8	17.5	\$44.20	Tons	\$8,576.53	\$357.36
Top_Pulpwood		46.1					1.9			0.2			\$8.00	Tons	\$368.82	\$15.37



All Merchantable	800.0	407.0	210.1	34.7	32.0	33.3	17.0	8.8	1,445.2	0.8	43.4	13.3	\$19.98	Tons	\$12,326.14	\$513.59
------------------	-------	-------	-------	------	------	------	------	-----	---------	-----	------	------	---------	------	-------------	----------

**Tract Value Summary by Group and Product**

Number of Stands:	1
# Plots/points:	24
Total Acres:	47
Sawlog Vol Units:	Scrib

Tract Name:	Seaton Family Trust Tract 2
Location:	Lee County, GA
Report Date:	2/18/2022



**Pine**

Tract Total				
Product	Trees	PW Tons	Saw Tons	MBF
Pulpwood	78.3	99.8		
Sawlog	1,135.8	542.2	1,114.5	196.8
Top_Pulpwood		542.2		
All Merchantable	1,214.2	642.1	1,114.5	196.8

Per Acre				
BA	Trees	PW Tons	Saw Tons	BF
	2.3	1.7	2.1	
	38.7	24.1	11.5	23.7
			11.5	
	41.0	25.8	13.6	23.7
				4,177.4

Avg. Tree			
Tons/Tree	BF/Tree	Avg DBH	
1.3		16.0	
1.0		173.2	17.2
0.5			
1.4		162.1	17.1

\$/Ton		Value	
	Tons	Stand Tot \$	Per Acre \$
\$12.00	Tons	\$1,198.13	\$25.44
\$50.00	Tons	\$55,726.05	\$1,183.14
\$8.00	Tons	\$4,337.75	\$92.10
\$34.88	Tons	\$61,261.93	\$1,300.68

**Misc. Hardwood**

Tract Total			
Product	Trees	PW Tons	Saw Tons
Pulpwood	19.6	10.2	
All Merchantable	19.6	10.2	0.0

Per Acre				
BA	Trees	PW Tons	Saw Tons	BF
	0.4	0.4	0.2	
	0.4	0.4	0.2	0.0

Avg. Tree			
Tons/Tree	BF/Tree	Avg DBH	
0.5		14.0	
0.5		0.0	14.0

\$/Ton		Value	
	Tons	Stand Tot \$	Per Acre \$
\$7.00	Tons	\$71.15	\$1.51
\$7.00	Tons	\$71.15	\$1.51

**All Species Group**

Tract Total				
Product	Trees	PW Tons	Saw Tons	MBF
Pulpwood	97.9	110.0		
Sawlog	1,135.8	542.2	1,114.5	196.8
Top_Pulpwood		542.2		
All Merchantable	1,233.8	652.2	1,114.5	196.8

Per Acre				
BA	Trees	PW Tons	Saw Tons	BF
	2.8	2.1	2.3	
	38.7	24.1	11.5	23.7
			11.5	
	41.5	26.2	13.8	23.7
				4,177.4

Avg. Tree			
Tons/Tree	BF/Tree	Avg DBH	
1.1		15.6	
1.0		173.2	17.2
0.5			
1.4		159.5	17.0

\$/Ton		Value	
	Tons	Stand Tot \$	Per Acre \$
\$11.54	Tons	\$1,269.27	\$26.95
\$50.00	Tons	\$55,726.05	\$1,183.14
\$8.00	Tons	\$4,337.75	\$92.10
\$34.72	Tons	\$61,333.08	\$1,302.19

Pulpwood	2,133.5	1,240.8			
Chip-n-saw	20.0	0.0	9.4		1.0
Sawlog	2,440.6	1,049.0	2,902.2		520.4
Top_Pulpwood		1,049.0			
All Merchantable	4,594.1	2,289.8	2,911.5		521.4

	11.5	15.1	8.8		
	0.1	0.1	0.0	0.1	7.3
	29.8	17.3	7.4	20.6	3,690.6
			7.4		
	41.3	32.6	16.2	20.6	3,697.9

	0.6		11.8		
	0.5	51.6	10.0		
	1.2	213.2	17.8		
	0.4				
	1.1	113.5	15.3		

	\$8.10	Tons		
	\$35.00	Tons		
	\$49.56	Tons		
	\$8.00	Tons		
	\$31.26	Tons		

	\$10,053.60	\$71.30
	\$328.75	\$2.33
	\$143,820.36	\$1,020.00
	\$8,392.18	\$59.52
	\$162,594.89	\$1,153.16

**Tract Value Summary by Group and Product**

Number of Stands:	2
# Plots/points:	71
Total Acres:	141
Sawlog Vol Units:	Scrib

Tract Name:	Seaton Family Trust Tract 3
Location:	Lee County, GA
Report Date:	2/18/2022



**Pine**

Tract Total			
Product	Trees	PW Tons	Saw Tons
Pulpwood	239.1	273.6	
Chip-n-saw	20.0	0.0	9.4
Sawlog	2,360.6	1,049.0	2,816.3
Top Pulpwood		1,049.0	
All Merchantable	2,619.6	1,322.6	2,825.7

Per Acre			
BA	Trees	PW Tons	Saw Tons
BA	2.0	1.7	1.9
	0.1	0.1	0.0
	28.7	16.7	7.4
		7.4	
	30.8	18.6	9.4

Avg. Tree		
Tons/Tree	BF/Tree	Avg DBH
1.1		14.7
0.5		51.6
1.2		214.9
0.4		
1.6		194.0

\$/Ton		Value	
Tons	Stand Tot \$	Tons	Per Acre \$
\$12.00	\$3,283.34		\$23.29
\$35.00	\$328.75		\$2.33
\$50.00	\$140,817.02		\$998.70
\$8.00	\$8,392.18		\$59.52
\$36.84	\$152,821.29		\$1,083.84

**Oak**

Tract Total			
Product	Trees	PW Tons	Saw Tons
Sawlog	60.0	0.0	75.4
All Merchantable	60.0	0.0	75.4

Per Acre			
BA	Trees	PW Tons	Saw Tons
BA	1.0	0.4	0.0
	1.0	0.4	0.5
		0.5	
	1.0	0.4	0.5

Avg. Tree		
Tons/Tree	BF/Tree	Avg DBH
1.3		191.7
1.3		191.7
1.3		191.7

\$/Ton		Value	
Tons	Stand Tot \$	Tons	Per Acre \$
\$35.00	\$2,639.61		\$18.72
\$35.00	\$2,639.61		\$18.72

**Misc. Hardwood**

Tract Total			
Product	Trees	PW Tons	Saw Tons
Pulpwood	1,894.4	967.2	
Sawlog	20.0	0.0	10.4
All Merchantable	1,914.4	967.2	10.4

Per Acre			
BA	Trees	PW Tons	Saw Tons
BA	9.5	13.4	6.9
	0.2	0.1	0.0
	9.6	13.6	6.9

Avg. Tree		
Tons/Tree	BF/Tree	Avg DBH
0.5		11.4
0.5		83.3
0.5		14.0
0.5		0.9
0.5		11.4

\$/Ton		Value	
Tons	Stand Tot \$	Tons	Per Acre \$
\$7.00	\$6,770.26		\$48.02
\$35.00	\$363.73		\$2.58
\$7.30	\$7,133.99		\$50.60

**All Species Group**

Tract Total			
Product	Trees	PW Tons	Saw Tons

Per Acre			
BA	Trees	PW Tons	Saw Tons
BA			

Avg. Tree		
Tons/Tree	BF/Tree	Avg DBH

\$/Ton		Value	
Tons	Stand Tot \$	Tons	Per Acre \$

Pulpwood	2,133.5	1,240.8		
Chip-n-saw	20.0	0.0	9.4	1.0
Sawlog	2,440.6	1,049.0	2,902.2	520.4
Top_Pulpwood		1,049.0		
All Merchantable	4,594.1	2,289.8	2,911.5	521.4

	11.5	15.1	8.8	
	0.1	0.1	0.0	0.1
	29.8	17.3	7.4	20.6
			7.4	3,690.6
	41.3	32.6	16.2	20.6
				3,697.9

	0.6		11.8
	0.5	51.6	10.0
	1.2	213.2	17.8
	0.4		
	1.1	113.5	15.3

	\$8.10	Tons
	\$35.00	Tons
	\$49.56	Tons
	\$8.00	Tons
	\$31.26	Tons

	\$10,053.60	\$71.30
	\$328.75	\$2.33
	\$143,820.36	\$1,020.00
	\$8,392.18	\$59.52
	\$162,594.89	\$1,153.16

**Stand Value Summary by Group and Product**

Sampling Method:	Pilot	Tract Name:	Seaton Family Trust Tract 3
BAF / Plot Size:	0.1	Stand ID:	Upland Pine
# Plots/points:	54	Location:	Lee County, GA
Stand Acres:	107.0	Date Cruised:	2/18/2022
Cruiser:	Timberland Services	Saw Volume Unit:	Scrib



**Pine**

Stand Total				Per Acre				Avg. Tree			Value					
Product	Trees	PW Tons	Saw Tons	MBF	BA	Trees	PW Tons	Saw Tons	BF	Tons/Tree	Bf/Tree	Avg DBH	\$/Ton	Tons	Stand Tot \$	Per Acre \$
Pulpwood	99.1	146.8			1.5	0.9	1.4			1.5		17.1	\$12.00	Tons	\$1,761.20	\$16.46
Sawlog	2,080.6	966.6	2,421.0	437.4	33.6	19.4	9.0	22.6	4,087.6	1.2	210.2	17.8	\$50.00	Tons	\$121,051.20	\$1,131.32
Top_Pulpwood		966.6					9.0			0.5			\$8.00	Tons	\$7,732.83	\$72.27
All Merchantable	2,179.6	1,113.4	2,421.0	437.4	35.1	20.4	10.4	22.6	4,087.6	1.6	200.7	17.8	\$36.94	Tons	\$130,545.23	\$1,220.05

**Misc. Hardwood**

Stand Total				Per Acre				Avg. Tree			Value					
Product	Trees	PW Tons	Saw Tons	MBF	BA	Trees	PW Tons	Saw Tons	BF	Tons/Tree	Bf/Tree	Avg DBH	\$/Ton	Tons	Stand Tot \$	Per Acre \$
Pulpwood	594.4	312.8			4.8	5.6	2.9			0.5		12.6	\$7.00	Tons	\$2,189.95	\$20.47
All Merchantable	594.4	312.8	0.0	0.0	4.8	5.6	2.9	0.0	0.0	0.5	0.0	12.6	\$7.00	Tons	\$2,189.95	\$20.47

**All Species Group**

Stand Total				Per Acre				Avg. Tree			Value					
Product	Trees	PW Tons	Saw Tons	MBF	BA	Trees	PW Tons	Saw Tons	BF	Tons/Tree	Bf/Tree	Avg DBH	\$/Ton	Tons	Stand Tot \$	Per Acre \$
Pulpwood	693.5	459.6			6.3	6.5	4.3			0.7		13.3	\$8.60	Tons	\$3,951.15	\$36.93
Sawlog	2,080.6	966.6	2,421.0	437.4	33.6	19.4	9.0	22.6	4,087.6	1.2	210.2	17.8	\$50.00	Tons	\$121,051.20	\$1,131.32
Top_Pulpwood		966.6					9.0			0.5			\$8.00	Tons	\$7,732.83	\$72.27
All Merchantable	2,774.1	1,426.2	2,421.0	437.4	39.9	25.9	13.3	22.6	4,087.6	1.4	157.7	16.8	\$34.50	Tons	\$132,735.17	\$1,240.52

**Stand Value Summary by Group and Product**

Sampling Method:	Plot	Tract Name:	Seaton Family Trust Tract 3
BAF / Plot Size:	0.1	Stand ID:	Natural Hardwood & Pine
# Plots/points:	17	Location:	Lee County, GA
Stand Acres:	34.0	Date Cruised:	2/18/2022
Cruiser:	Timberland Services	Saw Volume Unit	Scrib



**Pine**

Stand Total				Per Acre				Avg. Tree			Value					
Product	Trees	PW Tons	Saw Tons	MBF	BA	Trees	PW Tons	Saw Tons	BF	Tons/Tree	Bf/Tree	Avg DBH	\$/Ton	Tons	Stand Tot \$	Per Acre \$
Pulpwood	140.0	126.8			3.6	4.1	3.7			0.9		12.6	\$12.00	Tons	\$1,522.13	\$44.77
Chip-n-saw	20.0	0.0	9.4	1.0	0.3	0.6	0.0	0.3	30.3	0.5	51.6	10.0	\$35.00	Tons	\$328.75	\$9.67
Sawlog	280.0	82.4	395.3	69.8	13.2	8.2	2.4	11.6	2,053.7	1.4	249.4	17.1	\$50.00	Tons	\$19,765.83	\$581.35
Top_Pulpwood		82.4					2.4			0.3			\$8.00	Tons	\$659.36	\$19.39
All Merchantable	440.0	209.3	404.7	70.9	17.1	12.9	6.2	11.9	2,084.1	1.4	161.0	15.6	\$36.28	Tons	\$22,276.06	\$655.18

**Oak**

Stand Total				Per Acre				Avg. Tree			Value					
Product	Trees	PW Tons	Saw Tons	MBF	BA	Trees	PW Tons	Saw Tons	BF	Tons/Tree	Bf/Tree	Avg DBH	\$/Ton	Tons	Stand Tot \$	Per Acre \$
Sawlog	60.0	0.0	75.4	11.5	4.0	1.8	0.0	2.2	338.3	1.3	191.7	20.3	\$35.00	Tons	\$2,639.61	\$77.64
All Merchantable	60.0	0.0	75.4	11.5	4.0	1.8	0.0	2.2	338.3	1.3	191.7	20.3	\$35.00	Tons	\$2,639.61	\$77.64

**Misc. Hardwood**

Stand Total				Per Acre				Avg. Tree			Value					
Product	Trees	PW Tons	Saw Tons	MBF	BA	Trees	PW Tons	Saw Tons	BF	Tons/Tree	Bf/Tree	Avg DBH	\$/Ton	Tons	Stand Tot \$	Per Acre \$
Pulpwood	1,300.0	654.3			24.1	38.2	19.2			0.5		10.8	\$7.00	Tons	\$4,580.31	\$134.72
Sawlog	20.0	0.0	10.4	1.7	0.6	0.6	0.0	0.3	49.0	0.5	83.3	14.0	\$35.00	Tons	\$363.73	\$10.70
All Merchantable	1,320.0	654.3	10.4	1.7	24.7	38.8	19.2	0.3	49.0	0.5	1.3	10.8	\$7.44	Tons	\$4,944.04	\$145.41

**All Species Group**

Stand Total				Per Acre				Avg. Tree			Value					
Product	Trees	PW Tons	Saw Tons	MBF	BA	Trees	PW Tons	Saw Tons	BF	Tons/Tree	Bf/Tree	Avg DBH	\$/Ton	Tons	Stand Tot \$	Per Acre \$
Pulpwood	1,440.0	781.2			27.7	42.4	23.0			0.5		10.9	\$7.81	Tons	\$6,102.45	\$179.48
Chip-n-saw	20.0	0.0	9.4	1.0	0.3	0.6	0.0	0.3	30.3	0.5	51.6	10.0	\$35.00	Tons	\$328.75	\$9.67
Sawlog	360.0	82.4	481.1	83.0	17.8	10.6	2.4	14.2	2,441.0	1.3	230.5	17.6	\$47.32	Tons	\$22,769.17	\$669.68
Top_Pulpwood		82.4					2.4			0.2			\$8.00	Tons	\$659.36	\$19.39

All Merchandise	1,820.0	863.6	490.5	84.0	45.8	53.5	25.4	14.4	2,471.3	0.7	46.2	12.5	\$22.05	Tons	\$29,859.72	\$878.23
-----------------	---------	-------	-------	------	------	------	------	------	---------	-----	------	------	---------	------	-------------	----------



**Tract Value Summary by Group and Product**

Number of Stands:	1
# Plots/points:	17
Total Acres:	24
Sawlog Vol Units:	Scrib

Tract Name:	Seaton Family Trust Tracts 4-7
Location:	Lee County, GA
Report Date:	2/18/2022



**Pine**

Tract Total				
Product	Trees	PW Tons	Saw Tons	MBF
Pulpwood	56.5	42.5		
Chip-n-saw	14.1	2.2	5.8	0.8
Sawlog	367.1	149.6	557.0	101.5
Top_Pulpwood		151.9		
All Merchantable	437.6	194.4	562.8	102.3

Per Acre					
BA	Trees	PW Tons	Saw Tons	BF	
1.7	2.3	1.8			
0.4	0.6	0.1	0.2	33.4	
29.0	15.2	6.2	23.1	4,212.9	
		6.3			
31.1	18.2	8.1	23.4	4,246.3	

Avg. Tree			
Tons/Tree	BF/Tree	Avg DBH	
0.8		11.6	
0.4	57.0	11.0	
1.5	276.6	18.7	
0.4			
1.7	233.8	17.7	

\$/Ton		Value	
	Tons	Stand Tot \$	Per Acre \$
\$12.00	Tons	\$509.89	\$21.16
\$35.00	Tons	\$202.36	\$8.40
\$50.00	Tons	\$27,849.46	\$1,155.58
\$8.00	Tons	\$1,214.90	\$50.41
\$39.33	Tons	\$29,776.60	\$1,235.54

**Oak**

Tract Total				
Product	Trees	PW Tons	Saw Tons	MBF
Pulpwood	14.1	29.7		
Sawlog	155.3	0.0	221.8	34.5
All Merchantable	169.4	29.7	221.8	34.5

Per Acre					
BA	Trees	PW Tons	Saw Tons	BF	
1.2	0.6	1.2			
13.3	6.4	0.0	9.2	1,430.9	
14.5	7.0	1.2	9.2	1,430.9	

Avg. Tree			
Tons/Tree	BF/Tree	Avg DBH	
2.1		19.0	
1.4	222.1	19.5	
1.5	203.6	19.4	

\$/Ton		Value	
	Tons	Stand Tot \$	Per Acre \$
\$7.00	Tons	\$208.02	\$8.63
\$35.00	Tons	\$7,761.89	\$322.07
\$31.69	Tons	\$7,969.91	\$330.70

**Misc. Hardwood**

Tract Total				
Product	Trees	PW Tons	Saw Tons	MBF
Pulpwood	734.1	399.7		
Palletwood	14.1	0.0	7.6	1.0
Sawlog	28.2	0.0	31.7	5.7
All Merchantable	776.5	399.7	39.3	6.6

Per Acre					
BA	Trees	PW Tons	Saw Tons	BF	
20.2	30.5	16.6			
0.4	0.6	0.0	0.3	40.7	
2.1	1.2	0.0	1.3	234.9	
22.6	32.2	16.6	1.6	275.6	

Avg. Tree			
Tons/Tree	BF/Tree	Avg DBH	
0.5		11.0	
0.5	69.4	11.0	
1.1	200.5	18.1	
0.6	8.6	11.4	

\$/Ton		Value	
	Tons	Stand Tot \$	Per Acre \$
\$7.00	Tons	\$2,798.18	\$116.11
\$12.00	Tons	\$91.77	\$3.81
\$35.00	Tons	\$1,108.81	\$46.01
\$9.11	Tons	\$3,998.76	\$165.92

**All Species Group**

Tract Total				
Product	Trees	PW Tons	Saw Tons	MBF
Pulpwood	804.7	471.9		
Chip-n-saw	28.2	2.2	13.4	1.8
Sawlog	550.6	149.6	810.4	141.7
Top_Pulpwood		151.9		
All Merchantable	1,383.5	623.8	823.9	143.5

Per Acre				
BA	Trees	PW Tons	Saw Tons	BF
23.0	33.4	19.6		
0.8	1.2	0.1	0.6	74.1
44.4	22.8	6.2	33.6	5,878.7
		6.3		
68.2	57.4	25.9	34.2	5,952.8

Avg. Tree			
Tons/Tree	BF/Tree	Avg DBH	
0.6		11.2	
0.5		63.2	11.0
1.5		257.3	18.9
0.3			
1.0		103.7	14.8

\$/Ton		Value	
	Tons	Stand Tot \$	Per Acre \$
\$7.45	Tons	\$3,516.09	\$145.90
\$21.90	Tons	\$294.13	\$12.20
\$45.31	Tons	\$36,720.15	\$1,523.66
\$8.00	Tons	\$1,214.90	\$50.41
\$28.84	Tons	\$41,745.27	\$1,732.17