

TIMBERLAND SERVICES

Telephone: (229) 407-0208
408 S. Westover Blvd. Albany, GA 31707
wes.shiver@gmail.com
January 26, 2022

Mrs. Deborah L. Brigulio
5715 Caboose Court
Charlotte, NC 28226

RE: TIMBER INVENTORY REPORT FOR HAGAN TRACT LOCATED IN WORTH COUNTY, GEORGIA

Mrs. Brigulio,

Enclosed are the results of the timber cruise that was requested for the +/- 55 timbered acres on the Hagan tract located in Worth County, Georgia. The tract was cruised for estimated timber volume and value.

The merchantable timber on the tract has a total estimated value of \$47,970.

The cruise was conducted during the month of January 2022. Average current timber stumpage values for the area were used in the valuation. Total volume and value summaries for each timber stand are provided.

The acreages were estimated from aerial photography incorporated into a GIS mapping computer program.

If you have any questions, please contact our office at your convenience.

Sincerely,

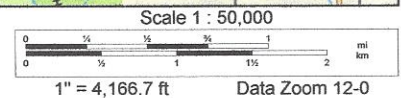
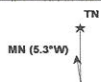


Wes Shiver
Georgia Registered Forester #2809

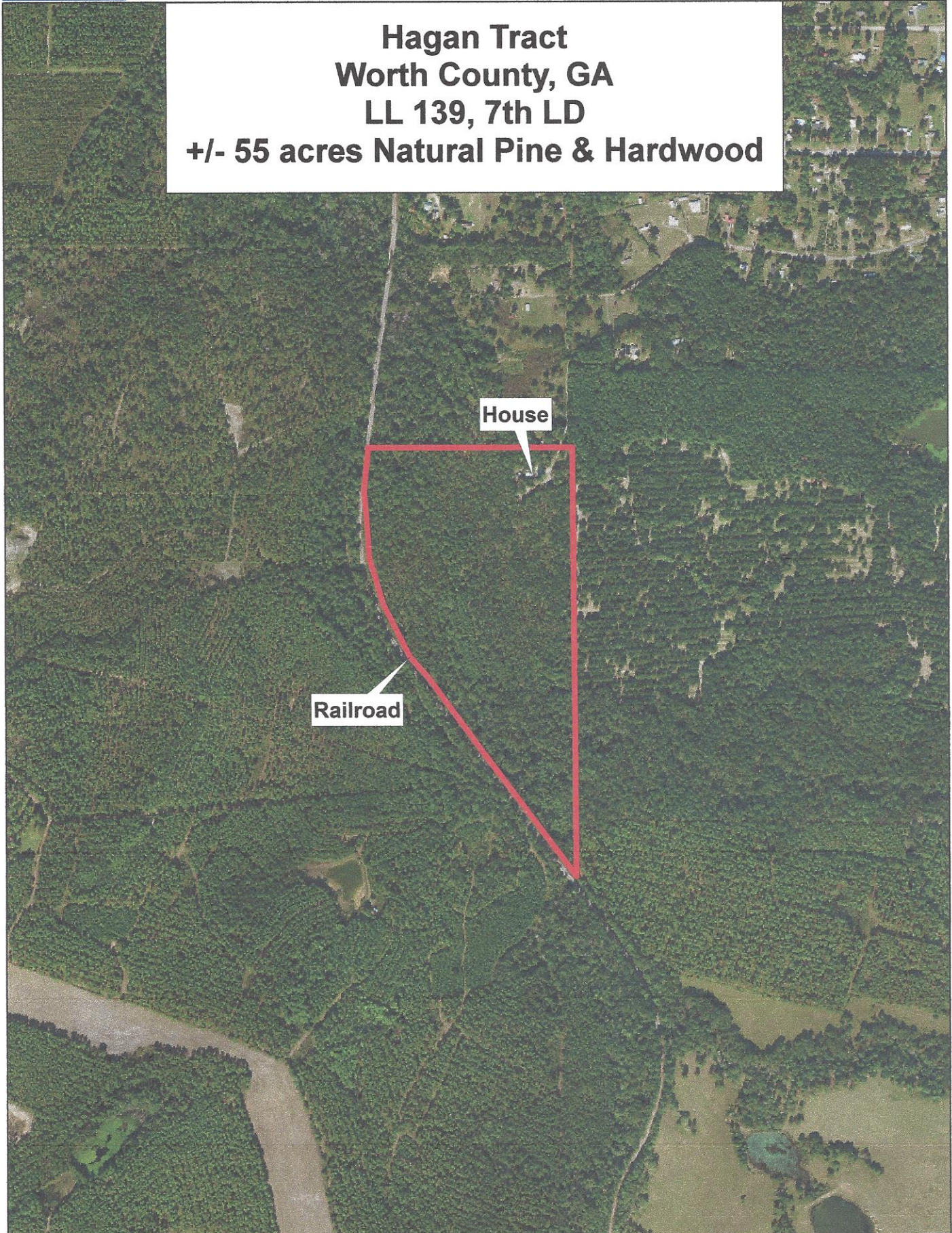
Hagan Tract Worth County, GA



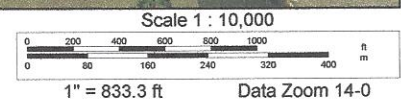
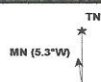
Data use subject to license.
 © DeLorme. XMap® 7.
 www.delorme.com



**Hagan Tract
Worth County, GA
LL 139, 7th LD
+/- 55 acres Natural Pine & Hardwood**



Data use subject to license.
© DeLorme. XMap® 7.
www.delorme.com



Tract Value Summary by Group and Product

Number of Stands:	1
Total Acres:	55
Sawlog Vol Units:	Scrib

Tract Name:	Hagan Tract
Location:	Worth County, GA
Report Date:	1/26/2022



Pine

Tract Total				
Product	Trees	PW Tons	Saw Tons	MBF
Pulpwood	63.5	71.8		
Chip-n-saw	169.2	11.3	65.7	7.6
Sawlog	253.8	120.9	306.4	55.5
Top Pulpwood		132.2		
All Merchantable	486.5	204.0	372.1	63.0

Per Acre					
BA	Trees	PW Tons	Saw Tons	BF	
1.3	1.2	1.3			
1.6	3.1	0.2	1.2	137.4	
8.1	4.6	2.2	5.6	1,008.7	
		2.4			
10.9	8.8	3.7	6.8	1,146.1	

Avg. Tree			
Tons/Tree	BF/Tree	Avg DBH	
1.1		14.3	
0.4		44.7	9.7
1.2		218.5	17.9
0.3			
1.2		129.6	15.1

\$/Ton		Value	
	Tons	Stand Tot \$	Per Acre \$
\$14.00	Tons	\$1,004.85	\$18.27
\$35.00	Tons	\$2,300.63	\$41.83
\$48.00	Tons	\$14,706.22	\$267.39
\$10.00	Tons	\$1,322.31	\$24.04
\$33.56	Tons	\$19,334.02	\$351.53

Oak

Tract Total				
Product	Trees	PW Tons	Saw Tons	MBF
Sawlog	126.9	0.0	167.4	25.8
All Merchantable	126.9	0.0	167.4	25.8

Per Acre					
BA	Trees	PW Tons	Saw Tons	BF	
4.5	2.3	0.0	3.0	469.0	
4.5	2.3	0.0	3.0	469.0	

Avg. Tree			
Tons/Tree	BF/Tree	Avg DBH	
1.3		203.2	18.9
1.3		203.2	18.9

\$/Ton		Value	
	Tons	Stand Tot \$	Per Acre \$
\$35.00	Tons	\$5,858.63	\$106.52
\$35.00	Tons	\$5,858.63	\$106.52

Misc. Hardwood

Tract Total				
Product	Trees	PW Tons	Saw Tons	MBF
Pulpwood	4,230.8	1,495.3		
Palletwood	401.9	0.0	234.9	33.3
Sawlog	190.4	0.0	221.7	39.8
All Merchantable	4,823.1	1,495.3	456.7	73.1

Per Acre					
BA	Trees	PW Tons	Saw Tons	BF	
35.1	76.9	27.2			
6.1	7.3	0.0	4.3	605.2	
5.7	3.5	0.0	4.0	723.4	
46.8	87.7	27.2	8.3	1,328.5	

Avg. Tree			
Tons/Tree	BF/Tree	Avg DBH	
0.4		9.1	
0.6		82.8	12.4
1.2		209.0	17.3
0.4		15.1	9.9

\$/Ton		Value	
	Tons	Stand Tot \$	Per Acre \$
\$8.00	Tons	\$11,962.59	\$217.50
\$13.00	Tons	\$3,054.20	\$55.53
\$35.00	Tons	\$7,760.89	\$141.11
\$11.67	Tons	\$22,777.68	\$414.14

All Species Group

Tract Total

Per Acre

Avg. Tree

Value

Product	Trees	PW Tons	Saw Tons	MBF
Pulpwood	4,294.2	1,567.1		
Chip-n-saw	571.2	11.3	300.7	40.8
Sawlog	571.2	120.9	695.5	121.1
Top_Pulpwood		132.2		
All Merchantable	5,436.5	1,699.3	996.2	161.9

BA	Trees	PW Tons	Saw Tons	BF
36.4	78.1	28.5		
7.7	10.4	0.2	5.5	742.6
18.2	10.4	2.2	12.6	2,201.0
		2.4		
62.3	98.8	30.9	18.1	2,943.6

Tons/tree	BF/tree	Avg DBH
0.4		9.2
0.5	71.5	11.6
1.2	211.9	17.9
0.1		
0.5	29.8	10.7

\$/Ton	Tons
\$8.27	Tons
\$17.81	Tons
\$40.73	Tons
\$10.00	Tons
\$17.80	Tons

Stand Tot \$	Per Acre \$
\$12,967.44	\$235.77
\$5,354.83	\$97.36
\$28,325.74	\$515.01
\$1,322.31	\$24.04
\$47,970.32	\$872.19

Tract Summary by Group, Product and DBH

Number of Stands:	1
Total Acres:	55
Sawlog Vol Units:	Scrib

Tract Name:	Hagan Tract
Stand:	Natural Pine & Hardwood
Location:	Worth County, GA
Report Date:	1/26/2022



Pine					
Total Tract					
Per Acre					
Avg. Tree					
Avg. Heights					
Pulpwood	DBH	Trees	PW Tons	Saw Tons	MBF
	7	21.2	3.7		
	9	21.2	6.9		
	22	21.2	61.1		
Pulpwood Total		63.5	71.8		
	BA	Trees	PW Tons	Saw Tons	BF
	0.10	0.4	0.07		
	0.17	0.4	0.13		
	1.02	0.4	1.11		
	1.29	1.2	1.31		
	Tons/Tree	BF/Tree			
	0.176				
	0.423				
	2.889				
	3.215				
	Hs	Hp	Hm		
		32.5	32.5		
		38.5	38.5		
		64.5	64.5		
		45.2	45.2		

Chip-n-saw	DBH	Trees	PW Tons	Saw Tons	MBF
	8	21.2	0.0	6.6	0.5
	9	42.3	2.0	14.3	1.5
	10	84.6	7.3	33.8	4.1
	11	21.2	2.0	11.0	1.5
Chip-n-saw Total		169.2	11.3	65.7	7.6
	BA	Trees	PW Tons	Saw Tons	BF
	0.13	0.4	0.00	0.12	8.94
	0.34	0.8	0.04	0.26	27.02
	0.84	1.5	0.13	0.61	74.97
	0.25	0.4	0.04	0.20	26.51
	1.57	3.1	0.21	1.20	137.43
	Tons/Tree	BF/Tree			
	0.314	23.234			
	0.339	35.123			
	0.399	48.729			
	0.518	68.931			
	0.388	44.666			
	Hs	Hp	Hm		
	54.5	54.5	54.5		
	40.5	57.8	57.8		
	37.8	61.4	61.4		
	41.5	65.9	65.9		
	41.0	60.2	60.2		

Sawlog	DBH	Trees	PW Tons	Saw Tons	MBF						
	13	21.2	3.6	15.2	2.3						
	14	42.3	12.1	24.6	4.1						
	16	42.3	13.0	44.5	7.6						
	17	21.2	7.6	26.6	4.7						
	19	21.2	10.5	32.7	6.1						
	20	84.6	55.6	122.0	22.8						
	23	21.2	18.4	40.9	7.9						
Sawlog Total		253.8	120.9	306.4	55.5						
	BA	Trees	PW Tons	Saw Tons	BF						
	0.35	0.4	0.07	0.28	42.33						
	0.82	0.8	0.22	0.45	73.64						
	1.07	0.8	0.24	0.81	137.72						
	0.61	0.4	0.14	0.48	85.87						
	0.76	0.4	0.19	0.59	110.65						
	3.36	1.5	1.01	2.22	413.98						
	1.11	0.4	0.33	0.74	144.47						
	8.08	4.6	2.20	5.57	1008.65						
	Tons/Tree	BF/Tree									
	0.717	110.051									
	0.581	95.730									
	1.053	179.035									
	1.256	223.273									
	1.547	287.693									
	1.441	269.084									
	1.931	375.614									
	1.207	218.542									
	Hs	Hp	Hm								
	40.5	70.9	70.9								
	24.5	59.1	59.1								
	39.0	74.0	74.0								
	41.5	79.3	79.3								
	40.5	81.5	81.5								
	32.5	75.3	75.3								
	32.5	77.6	77.6								
	34.3	73.1	73.1								
Group Total		486.5	204.0	372.1	63.0						
		10.94	8.8	3.71	6.77	1146.09	0.912	129.558	37.0	65.0	65.0

Oak															
Total Tract															
Per Acre															
Avg. Tree															
Avg. Heights															
Sawlog	DBH	Trees	PW Tons	Saw Tons	MBF	BA	Trees	PW Tons	Saw Tons	BF	Tons/Tree	BF/Tree	Hs	Hp	Hm
	14	21.2	0.0	14.6	2.0	0.41	0.4	0.00	0.26	36.75	0.688	95.548	24.5	24.5	24.5
	18	42.3	0.0	56.5	8.6	1.36	0.8	0.00	1.03	156.83	1.335	203.880	30.5	30.5	30.5
	19	21.2	0.0	37.6	5.9	0.76	0.4	0.00	0.68	106.55	1.779	277.039	38.5	38.5	38.5
	20	21.2	0.0	29.7	4.7	0.84	0.4	0.00	0.54	85.16	1.404	221.412	24.5	24.5	24.5
	23	21.2	0.0	29.0	4.6	1.11	0.4	0.00	0.53	83.66	1.372	217.516	16.5	16.5	16.5
Sawlog Total		126.9	0.0	167.4	25.8	4.48	2.3	0.00	3.04	488.95	1.319	203.213	27.5	27.5	27.5

Group Total	126.9	0.0	167.4	25.8	4.48	2.3	0.00	3.04	468.95	1.319	203.213	27.5	27.5	27.5
-------------	-------	-----	-------	------	------	-----	------	------	--------	-------	---------	------	------	------

Misc. Hardwood

Total Tract					Per Acre					Avg. Tree		Avg. Heights		
DBH	Trees	PW Tons	Saw Tons	MBF	BA	Trees	PW Tons	Saw Tons	BF	Tons/Tree	Bf/Tree	Hs	Hp	Hm
Pulpwood	359.6	40.4			1.28	6.5	0.73			0.112			25.7	25.7
	1,142.3	197.1			5.55	20.8	3.58			0.173			30.7	30.7
	994.2	250.1			6.31	18.1	4.55			0.252			36.0	36.0
	507.7	175.7			4.08	9.2	3.19			0.346			40.6	40.6
	401.9	187.2			3.99	7.3	3.40			0.466			45.7	45.7
	359.6	195.0			4.32	6.5	3.55			0.542			42.9	42.9
	148.1	95.3			2.11	2.7	1.73			0.644			42.4	42.4
	105.8	82.3			1.77	1.9	1.50			0.778			43.9	43.9
	42.3	25.1			0.82	0.8	0.46			0.592			24.5	24.5
	42.3	51.4			0.94	0.8	0.94			1.216			55.5	55.5
	84.6	86.5			2.15	1.5	1.57			1.023			36.0	36.0
	21.2	51.8			0.84	0.4	0.94			2.449			64.5	64.5
	21.2	57.4			0.93	0.4	1.04			2.711			64.5	64.5
Pulpwood Total	4,230.8	1,495.3			35.09	76.9	27.19			0.353			36.5	36.5

Total Tract					Per Acre					Avg. Tree		Avg. Heights		
DBH	Trees	PW Tons	Saw Tons	MBF	BA	Trees	PW Tons	Saw Tons	BF	Tons/Tree	Bf/Tree	Hs	Hp	Hm
Palletwood	84.6	0.0	88.5	5.9	1.02	1.5	0.00	0.88	108.10	0.573	70.263	46.5	46.5	46.5
	169.2	0.0	99.1	13.8	2.42	3.1	0.00	1.80	250.63	0.585	81.455	37.3	37.3	37.3
	84.6	0.0	45.4	7.0	1.42	1.5	0.00	0.83	126.56	0.537	82.261	26.5	26.5	26.5
	63.5	0.0	41.9	6.6	1.23	1.2	0.00	0.76	119.89	0.660	103.902	28.5	28.5	28.5
Palletwood Total	401.9	0.0	234.9	33.3	6.08	7.3	0.00	4.27	605.17	0.585	82.813	35.6	35.6	35.6

Total Tract					Per Acre					Avg. Tree		Avg. Heights		
DBH	Trees	PW Tons	Saw Tons	MBF	BA	Trees	PW Tons	Saw Tons	BF	Tons/Tree	Bf/Tree	Hs	Hp	Hm
Sawlog	21.2	0.0	10.8	1.7	0.35	0.4	0.00	0.20	30.53	0.511	79.378	24.5	24.5	24.5
	42.3	0.0	31.7	5.0	0.82	0.8	0.00	0.58	90.76	0.748	117.985	34.0	34.0	34.0
	42.3	0.0	29.9	5.0	0.94	0.8	0.00	0.54	90.15	0.707	117.190	27.5	27.5	27.5
	21.2	0.0	16.4	2.8	0.54	0.4	0.00	0.30	50.77	0.774	132.008	24.5	24.5	24.5
	21.2	0.0	22.8	3.9	0.61	0.4	0.00	0.42	71.24	1.080	185.218	32.5	32.5	32.5
	21.2	0.0	33.7	6.1	0.76	0.4	0.00	0.61	110.52	1.591	287.346	40.5	40.5	40.5
	21.2	0.0	76.5	15.4	1.64	0.4	0.00	1.39	279.39	3.614	726.422	42.5	42.5	42.5
Sawlog Total	190.4	0.0	221.7	39.8	5.67	3.5	0.00	4.03	723.35	1.165	208.969	31.9	31.9	31.9
Group Total	4,823.1	1,495.3	456.7	73.1	46.84	87.7	27.19	8.30	1328.52	0.405	15.150	34.4	36.3	36.3

All Species Groups

Total Tract					Per Acre					Avg. Tree		Avg. Heights		
DBH	Trees	PW Tons	Saw Tons	MBF	BA	Trees	PW Tons	Saw Tons	BF	Tons/Tree	Bf/Tree	Hs	Hp	Hm
Pulpwood	359.6	40.4			1.28	6.5	0.73			0.112		25.7	25.7	25.7
	1,163.5	200.8			5.65	21.2	3.65			0.173		30.7	30.7	30.7
	994.2	250.1			6.31	18.1	4.55			0.252		36.0	36.0	36.0
	528.8	182.6			4.25	9.6	3.32			0.349		40.5	40.5	40.5

