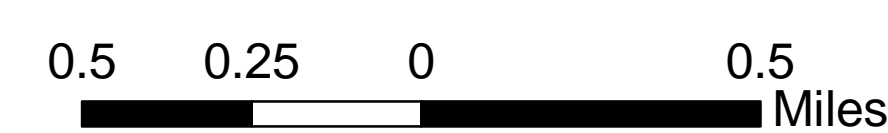
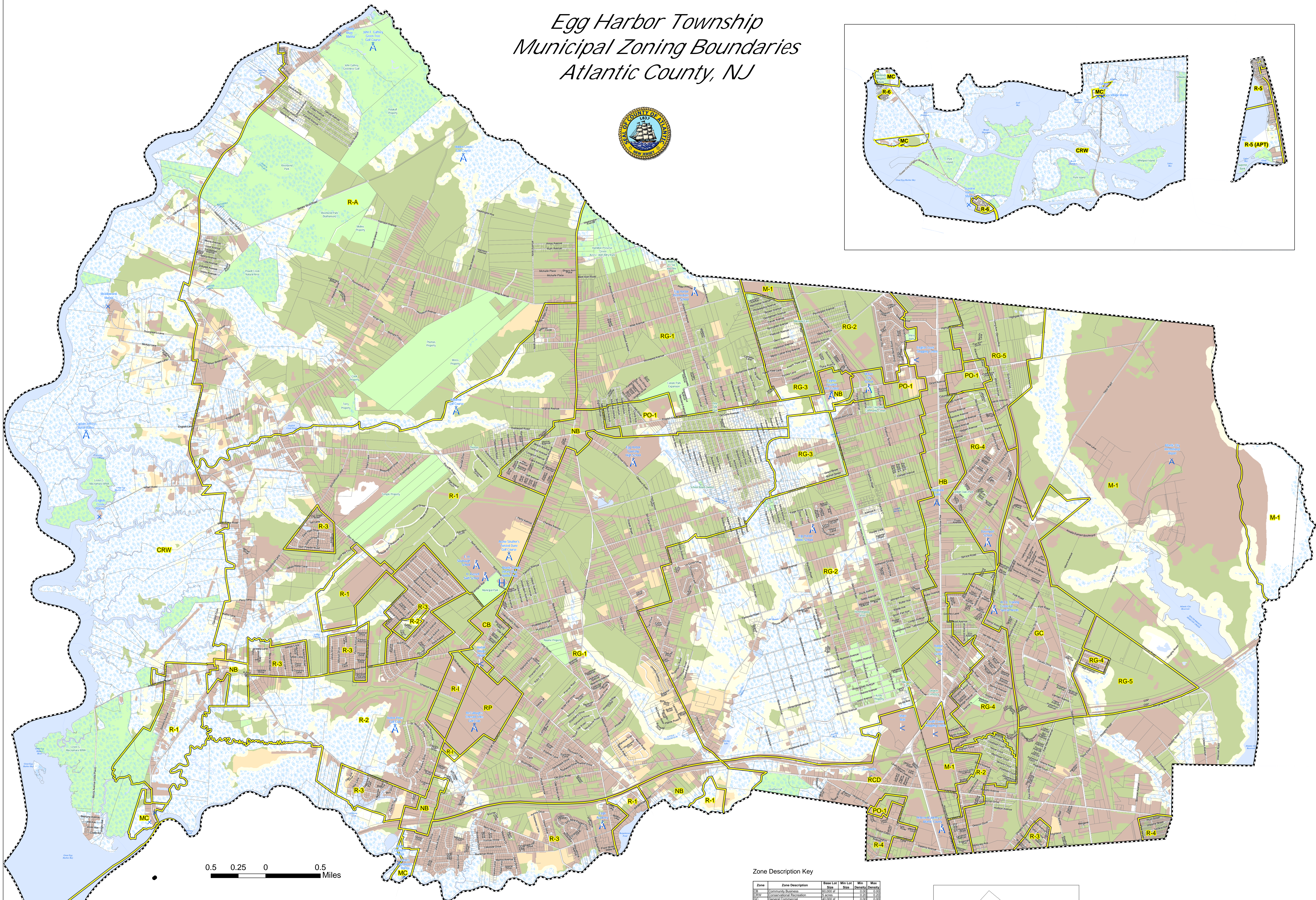
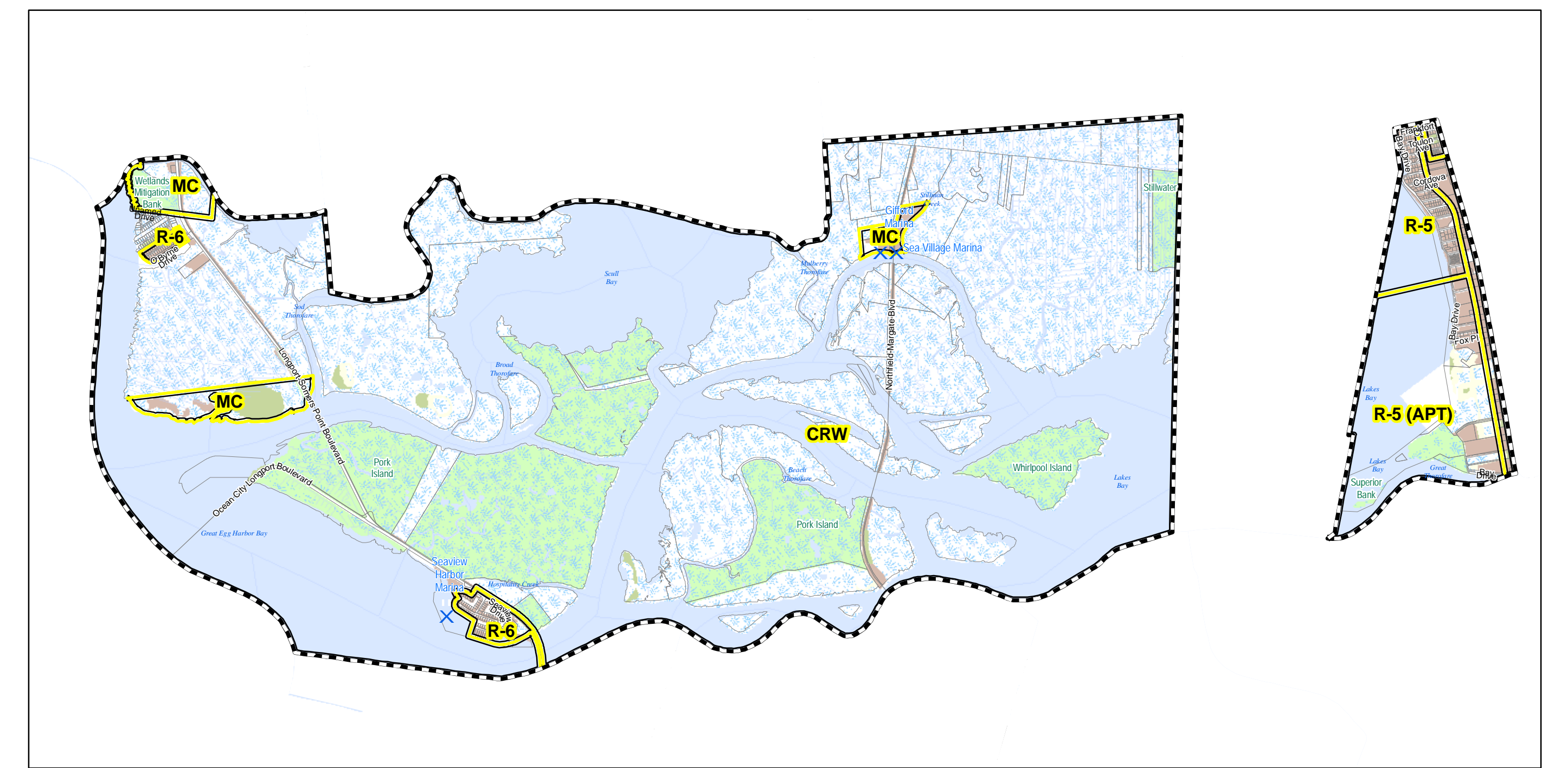


Egg Harbor Township Municipal Zoning Boundaries Atlantic County, NJ

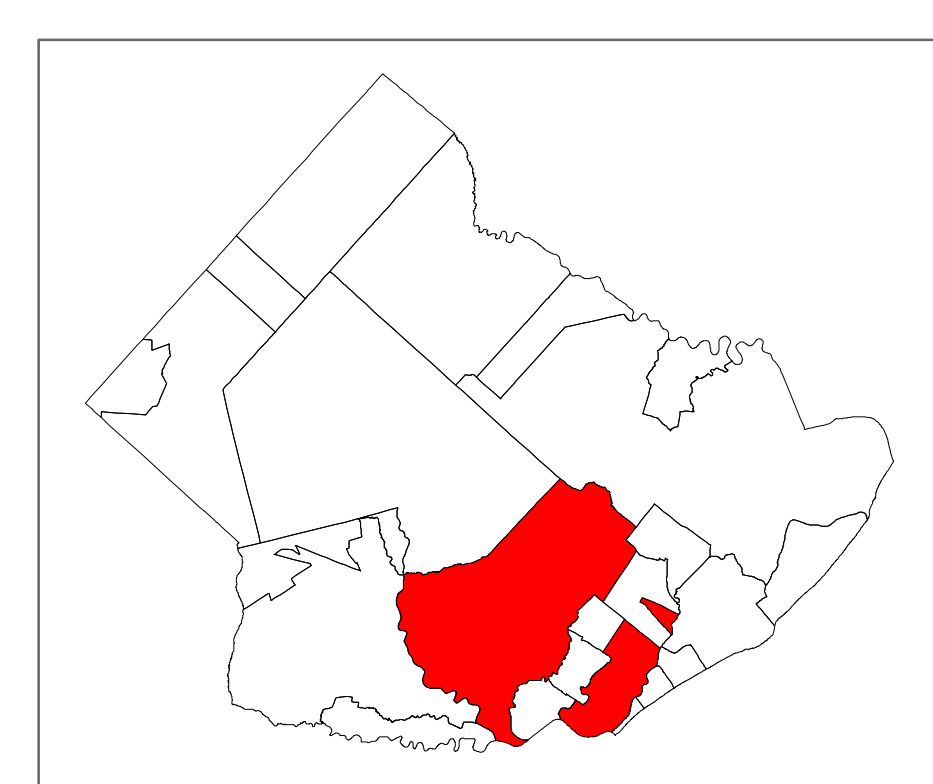


Legend	
	Municipal Boundary
	Tax Parcel Boundary
	Zoning Boundary
	Agriculture
	Developed Land
	Unconstrained Land
	Maximum Wetlands Buffer
	Open Space
	Water
	Wetlands
	Streams
	Airport
	Amusement Park
	Cultural Arts Center
	Golf Course
	Library
	Marina
	Monuments / Memorials
	School
	Shopping Center
	Roadway
	Railroad
	Tax Street
	Right of Way

Zone Description Key

Zone	Zone Description	Base Lot Size	Min Lot Size	Min Density	Max Density
CB	Community Business	50,000 sf	1,000	0.00	0.00
CRW	Conservation Recreation	5 acres	0.20	0.20	0.20
GC	General Commercial	50,000 sf	0.00	0.00	0.00
HB	Highway Business	50,000 sf	0.00	0.00	0.00
LI	Light Industrial	5 acres	0.00	0.00	0.00
MC	Marina Commercial	5 acres	0.00	0.00	0.00
MB	Neighborhood Business	5 acres	0.00	0.00	0.00
PO-1	Professional Offices	5,000 sf	0.00	0.00	0.00
R-1	Residential	10,000 sf	1.11	1.11	1.11
R-2	Low density single family	20,000 sf	1.45	1.45	1.45
R-3	Residential	10,000 sf	4.36	4.36	4.36
R-4	Residential	10,000 sf	1.11	1.11	1.11
R-5	Residential	5,000 sf	1.28	1.28	1.28
R-5 (APT)	Residential	5,000 sf	1.28	1.28	1.28
R-6	Residential	100,000 sf	0.44	0.44	0.44
RP	Residential Professional	5 acres	0.00	0.00	0.00
RCD	Regional Commercial Development	5 acres	0.00	0.00	0.00
RG-1	Residential Growth	10,000 sf	11,200 sf	2.00	3.00
RG-2	Residential Growth	10,000 sf	10,000 sf	2.00	3.00
RG-3	Residential Growth	10,000 sf	8,000 sf	1.11	1.11
RG-4	Residential Growth	10,000 sf	1,500 sf	3.00	6.00
RG-5	Residential Growth	10,000 sf	2,000 sf	3.00	6.00
RP	Residential Professional	5 acres	0.00	0.00	0.00
SBP	Special Business	5 acres	0.00	0.00	0.00
SHP	Special Highway Development	10,000 sf	0.00	0.00	0.00

The 2006 zoning updates reflect zoning changes as per revision date on the source map received from each municipality.
Egg Harbor TWP: 11/01/2002



This map is for demonstration purposes only and was not developed in accordance with National Map Accuracy Standards. Any use of this product with respect to accuracy and precision shall be the sole responsibility of the user. The map was developed, in part, using New Jersey Department of Environmental Protection Geographic Information System (GIS) digital data, in conjunction with the Atlantic County Office of Geographic Information Systems, but this secondary product has not been verified by NJDEP and is not state authorized. The geodetic accuracy and precision of the GIS data contained in this map has not been developed nor verified by a professional licensed land surveyor and shall not be used in matters requiring delineation and location of true ground horizontal and/or vertical controls. File: EHT.mxd 6/5/2006 1:04:44 PM