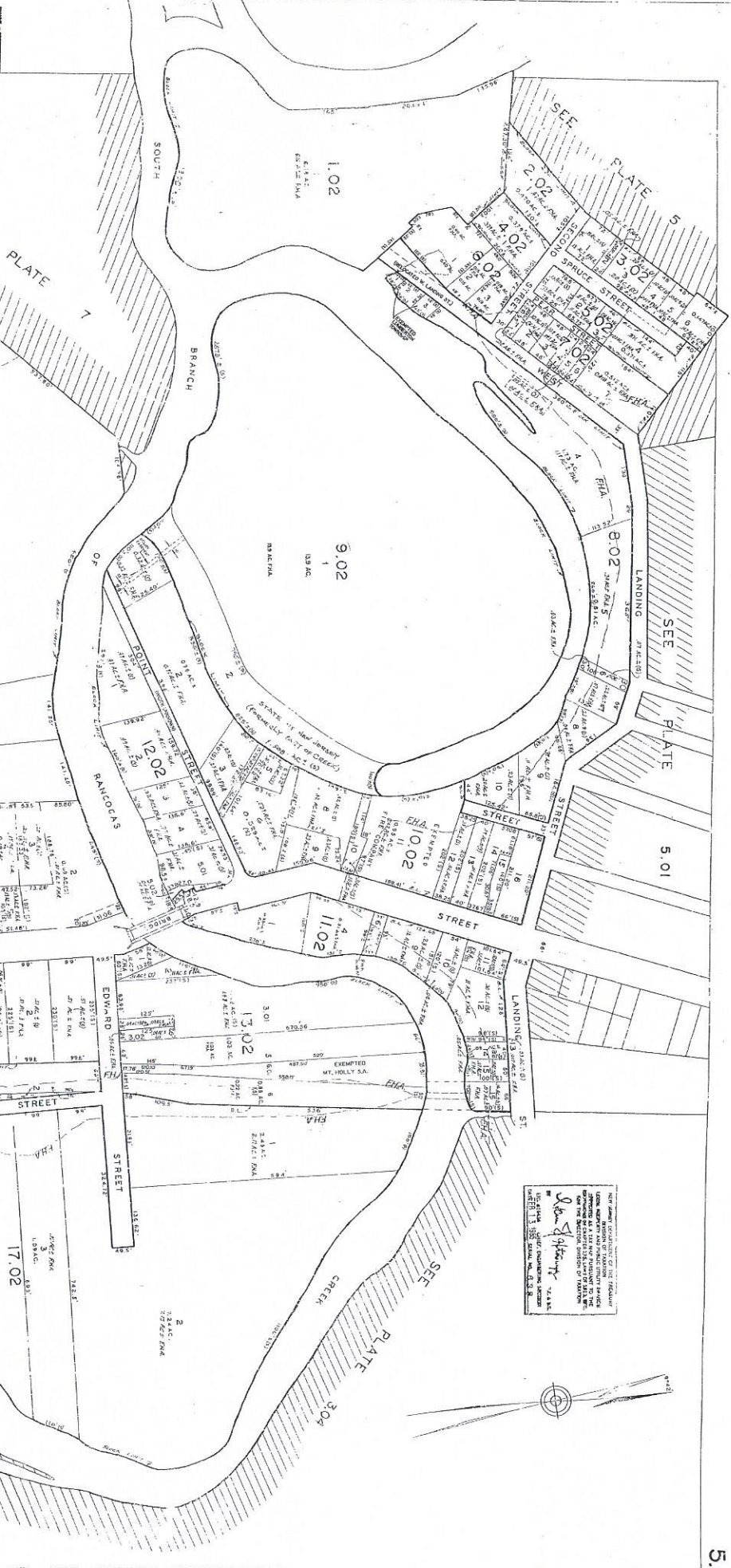


REVISIONS	REVISIONS	REVISIONS
REVISED BY:	DATE	REVISION MADE TO:
EDWARD A. ALAMO ASSOC.	12-02-85	RETRACT LOT 2&3, 6 LOT ADDED CASEMENTS 1989/10/1
RA ALAMO ASSOCIATES	3-1-86	RETRACT LOT 2&3, 6 LOT ADDED CASEMENTS 1989/10/1
RA ALAMO ASSOCIATES	7-28-86	RETRACT LOT 2&3, 6 LOT ADDED CASEMENTS 1989/10/1
RA ALAMO ASSOCIATES	7-28-86	RETRACT LOT 2&3, 6 LOT ADDED CASEMENTS 1989/10/1

REVISIONS	REVISIONS	REVISIONS
REVISED BY:	DATE	REVISION MADE TO:
EDWARD A. ALAMO ASSOC.	12-02-85	RETRACT LOT 2&3, 6 LOT ADDED CASEMENTS 1989/10/1
RA ALAMO ASSOCIATES	3-1-86	RETRACT LOT 2&3, 6 LOT ADDED CASEMENTS 1989/10/1
RA ALAMO ASSOCIATES	7-28-86	RETRACT LOT 2&3, 6 LOT ADDED CASEMENTS 1989/10/1
RA ALAMO ASSOCIATES	7-28-86	RETRACT LOT 2&3, 6 LOT ADDED CASEMENTS 1989/10/1

REVISIONS	REVISIONS	REVISIONS
REVISED BY:	DATE	REVISION MADE TO:
EDWARD A. ALAMO ASSOC.	12-02-85	RETRACT LOT 2&3, 6 LOT ADDED CASEMENTS 1989/10/1
RA ALAMO ASSOCIATES	3-1-86	RETRACT LOT 2&3, 6 LOT ADDED CASEMENTS 1989/10/1
RA ALAMO ASSOCIATES	7-28-86	RETRACT LOT 2&3, 6 LOT ADDED CASEMENTS 1989/10/1
RA ALAMO ASSOCIATES	7-28-86	RETRACT LOT 2&3, 6 LOT ADDED CASEMENTS 1989/10/1

LUMBERTON TOWNSHIP  
BURLINGTON COUNTY, N. J.  
PLOTTED FROM SURVEYS & RECORDS  
BY  
GAIL GUNDEL  
SCALE 1" = 100'  
REVISED APR 28 1986  
REVISED OCT 10 1985  
REVISED DEC 28 1985



NOT TO BE REPRODUCED OR TRANSMITTED IN ANY FORM OR BY ANY MEANS, ELECTRONIC OR MECHANICAL, INCLUDING PHOTOCOPYING, RECORDING, OR BY ANY INFORMATION STORAGE AND RETRIEVAL SYSTEM, WITHOUT THE WRITTEN PERMISSION OF THE PLOTTING ENGINEER.  
GAIL GUNDEL  
SCALE 1" = 100'  
REVISED APR 28 1986  
REVISED OCT 10 1985  
REVISED DEC 28 1985