

Property Photos with Notes

7805 Floydsburg Rd., Crestwood, KY 40014



Located in the heart of Crestwood, in highly sought-after Oldham County, this home sits on 2+ acres, complete with many mature trees, a large pond, and backs up to Waldeck Farm & Mansion.



Originally built in 1973, two massive additions to the home - an oversized kitchen and a 1,020 sq. ft. Great Room - bring the square footage of this slice of paradise to nearly 4,000 square feet!

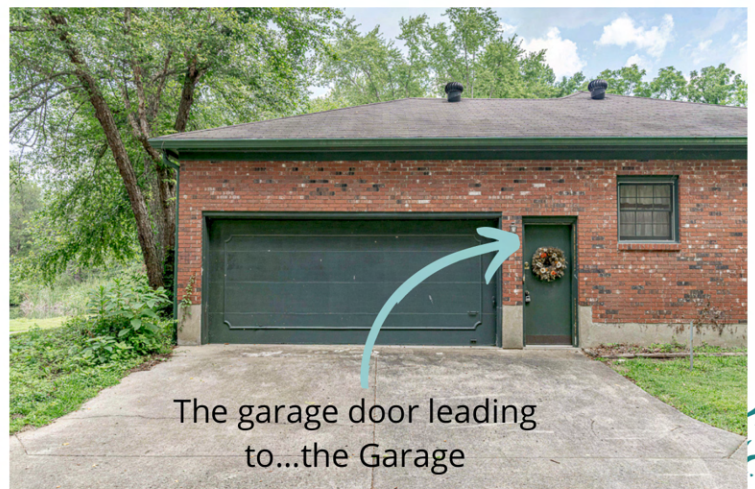
The property has quite the wildlife variety! We've seen fish jump in the pond, deer wander the yard, and even a turtle lay eggs during our time here!





Welcome Home!

There are a total of six points of entry to the home: the original front door (leading to the living room), the side deck door (leading to the Great Room), the garage door (leading to the garage), the back door (leading to the newer kitchen addition), the patio sliding glass doors (leading to the den), and the side back door (leading to the rear of the Great Room).



Kitchen (Addition)

The added kitchen sits at the rear of the house and is located just off the Primary Bedroom and original kitchen. This space is huge; nearly 600 square feet of cooking luxury!



There is plenty of space for tables and seating, lots of cabinet storage, and even a bumped out window seat with extra storage below.



There are two large closets/pantries with double French doors and stained glass work in several areas.





**Over 1,000
square feet!**

Great Room (Addition)

The expansive Great Room was also an addition to the original house. With a vision for entertaining, the owner constructed a wood floor stage that steps up from the carpeted area.

The side wall is outfitted with a beautiful stone fireplace and flanked by wrap-around built-in shelving, closets with French doors, and corner shelving for display!



30'2" x 35'1"





The amount of closets, storage, shelving, and display areas in this room alone are incredible!



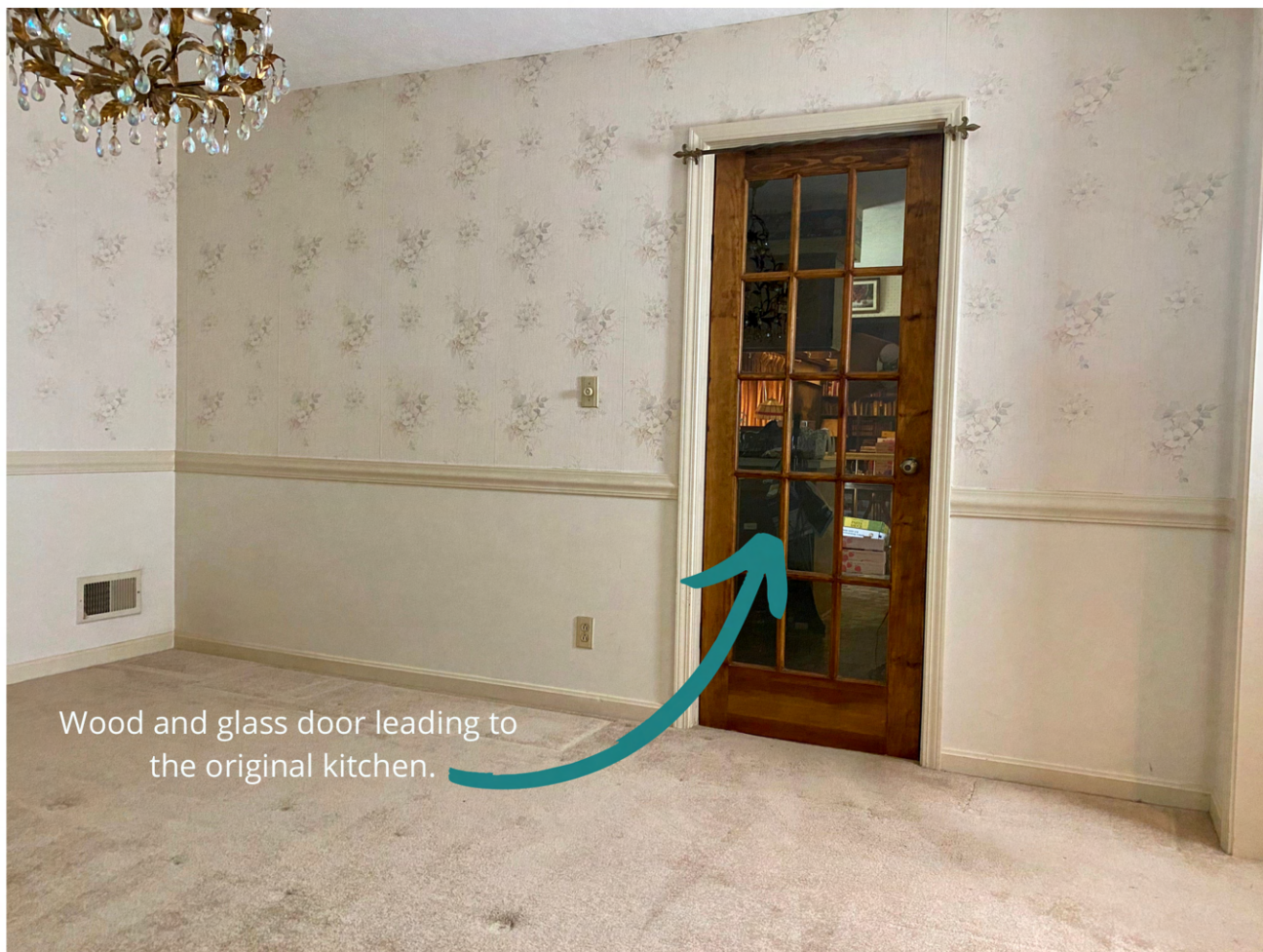
The stage is highlighted with posts in the center, with hooks on the sides and the opposite walls which was adorned with velvet ropes or garland during the holidays.

The stage leads into another room, which was previously a bedroom before the addition. This room also has a window and two large closets.

Dining Room

Off the original kitchen and living room is the formal Dining Room which features wall-to-wall carpet and a chair rail.

The window was originally an exterior window but now looks into the added kitchen.



Wood and glass door leading to the original kitchen.

Kitchen (Original)

The original kitchen is nestled between the Family Room and Dining Room and behind the Living Room. It has plenty of cabinet space and the cabinets above the peninsula help to create an open feel to the space.



You enter the kitchen addition through the original kitchen.

Off the kitchen there's an eating area, followed by a bannister and a couple steps down into the den/family room.

The family room has exposed beams, uplighting, and an exposed brick fireplace flanked by built-in bookshelves.





Primary Bedroom
Two large windows allow for great natural light in this room.

What used to be an exterior sliding glass door now opens up to the kitchen addition.



Double doors reveal a large dressing room with 3 closets and vanity set up with large mirrors. A bathroom with full shower is at the back of the dressing room.



One of the full bathrooms is located in the hallway across from a large linen closet.

A second bedroom with a large walk-in closet that leads to the hallway across from the Dining Room.



This is what used to be the third bedroom before the Great Room was added to the home. The wood and glass French Doors lead to the Great Room and the single door leads to the hallway by the second bedroom, linen closet, and full bathroom (all pictured above).



The back door of the Kitchen Addition opens to a covered porch with steps leading down to the backyard.

The sliding glass doors off the Family Room lead to an aggregate patio with lots of privacy.





View of the bay window in the Kitchen Addition.

The back of the Great Room has a small deck attached.

The backyard offers lots of shade thanks to the mature trees throughout the property.

There are 3 outbuildings in the backyard, and the property line backs up to land owned by Waldeck Farms.

