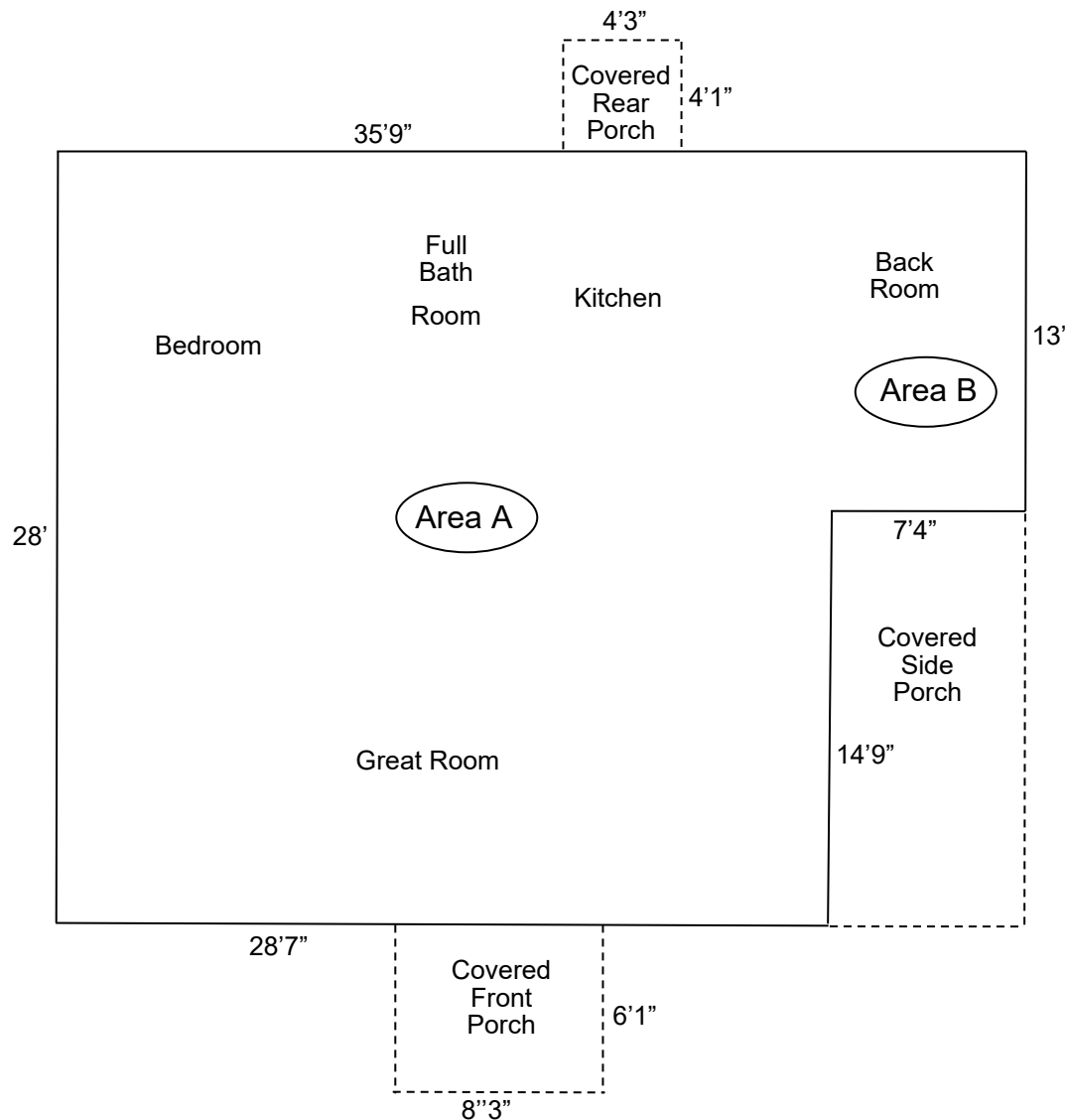


Approximate Square Footage - 3220 Wessel Rd.



The house has a full basement.

The four car garage is 30' x 40' for 1,200 sq. ft.
with an open workshop area and an unfinished sunroom.

Approx. Square Footage

Area A
28.583'
X 28'
800.324 sq. ft.

Area B
7.333'
X 13'
95.329 sq. ft.

Area A	800 sq. ft.
Area B	95 sq. ft.

Total 895 sq. ft.
Approximate

PVA Lists 875 sq. ft.

NOT TO SCALE

**ALL MEASUREMENTS
ARE APPROXIMATE.**

**MAY HAVE BEEN
ROUNDED, AND ARE**