

1424 Garvey Dr.



Large Back Yard!



Rear Deck is approx. 13'2" x 9'11"



Covered Concrete Patio is approx. 12' x 21'10"

All measurements shown are approximate and may have been rounded.

Living Room approx. 16'2" x 13'2" with triple front windows and a 5' brick fireplace.

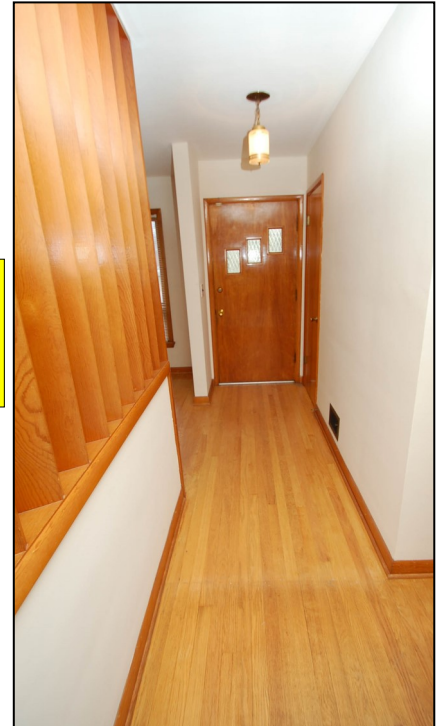


Beautiful Oak Hardwood Flooring and Natural Finished Trim!



5' Brick fireplace with Bedford stone mantle and large beveled mirror. Fireplace screen and tools will remain with the home.

Front door hallway, approx. 3'7" x 8'6", with coat closet.

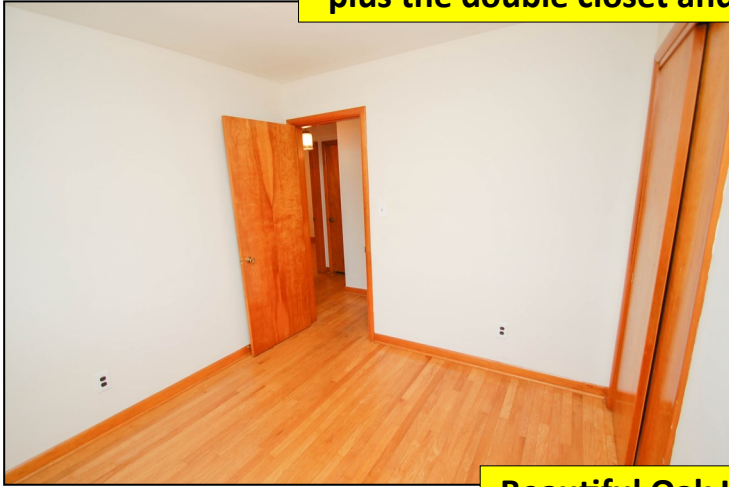


Formal Dining Room approx. 11' x 13'2" with double front windows, single side window, and a chandler with crystal tear drops. There are 2 stain spots on the floor.



All room measurements shown are approximate and may have been rounded.

**Front Middle Bedroom approx. 9'1" x 9'10"
plus the double closet and with double front windows.**



**Beautiful Oak Hardwood Flooring
and Natural Finished Trim!**



**Front Corner Bedroom approx. 13'7" x 9'11" plus 2 double
closets and with double front windows and a single side window.**

**Back Corner Bedroom approx. 10'1" x 10'7" plus
the double closet with 1 side and 1 rear window.
There is a stain spot on the floor.**



**All room measurements shown are
approximate and may have been rounded.**



Full Bathroom approx. 7' x 9'3"
including the linen closet, tub with
shower has ceramic tile enclosure,
ceramic tile floor, and 6' vanity with
updated sink.



**The main hallway is "L" shaped and is approx.
18'7" x 3' & 3' x 29" with a closet, oak hard-
wood flooring, and natural finished trim.**

**All room measurements shown are
approximate and may have been rounded.**



Large Eat-In Kitchen approx. 28'7" x 9'3".
New linoleum flooring. Natural finished kitchen cabinets and a painted recessed pantry cabinet (shown below). A natural finished Pella accordion door separates the kitchen dining area and the main hallway. Painted double folding doors cover the glass walk-out doors leading onto the deck (see below) . The GE dishwasher will remain with the home.



Painted recessed pantry cabinet.

Glass doors leading onto deck.



All room measurements shown are approximate and may have been rounded.



The rear "Mud Room" area is approx. 7'10" x 5' and is just inside the back door, next to the half bath and the kitchen. It has new linoleum flooring and 2 wall mounted pine shelves.



Half Bathroom is approx. 4' x 3'11" with new linoleum flooring and is directly off of the "Mud Room" area.

All room measurements shown are approximate and may have been rounded.



The full basement has approx. 1,442 total sq. ft. with approx. 1,142 finished sq. ft. and approx. 300 unfinished sq. ft.



The finished area of the basement has wood paneling, concrete floor, and large ceiling tiles. NOTE: Some of the ceiling tiles were recently removed to allow for plumbing repairs. These tiles have not been replaced, some are damaged. The Hisence dehumidifier, Whirlpool washer & Whirlpool electric dryer plus the older Philco refrigerator will remain with the house. The large older train board and the HO gauge trains and related accessories will also remain with the house (see next page for more photos). The basement does have a sump pump.



All room measurements shown are approximate and may have been rounded.

Recently, after 3 days of rain, some water was observed in the basement. The basement does leak. Please ask the Auctioneer for more details at the open house.



The large older train board, the HO gauge trains, and related accessories will remain with the house.



The unfinished area of the basement has built-in wood shelving and a 10' wood workbench with a 3" Wilton vise that will remain with the house.





Lennox gas furnace and central air were installed by Prudential Heating and Air Conditioning Co. in 1996.



40 gallon, gas Lochinvar water heater with an inspection sticker dated 11-2-11.



Sump Pump with inspection sticker dated 3-25-03.



The Hisense dehumidifier remains with the house.



Electrical breaker box is located in the basement and may be original to the house.

A new roof was installed on the house by Merrill Construction on October 30, 2009.



House Attic





The 2 car concrete block garage has a brick front and is approximately 26' x 22'5". The 2 overhead doors each have an approx. 8'6" wide opening and an approx. 6'1" height. The garage also has a walk-in side door off of the covered patio. The covered patio overhead does need some repair.



All measurements shown are approximate and may have been rounded.

There are termite shelter tubes visible in the garage. Please see the Termite Inspection Report for more details.