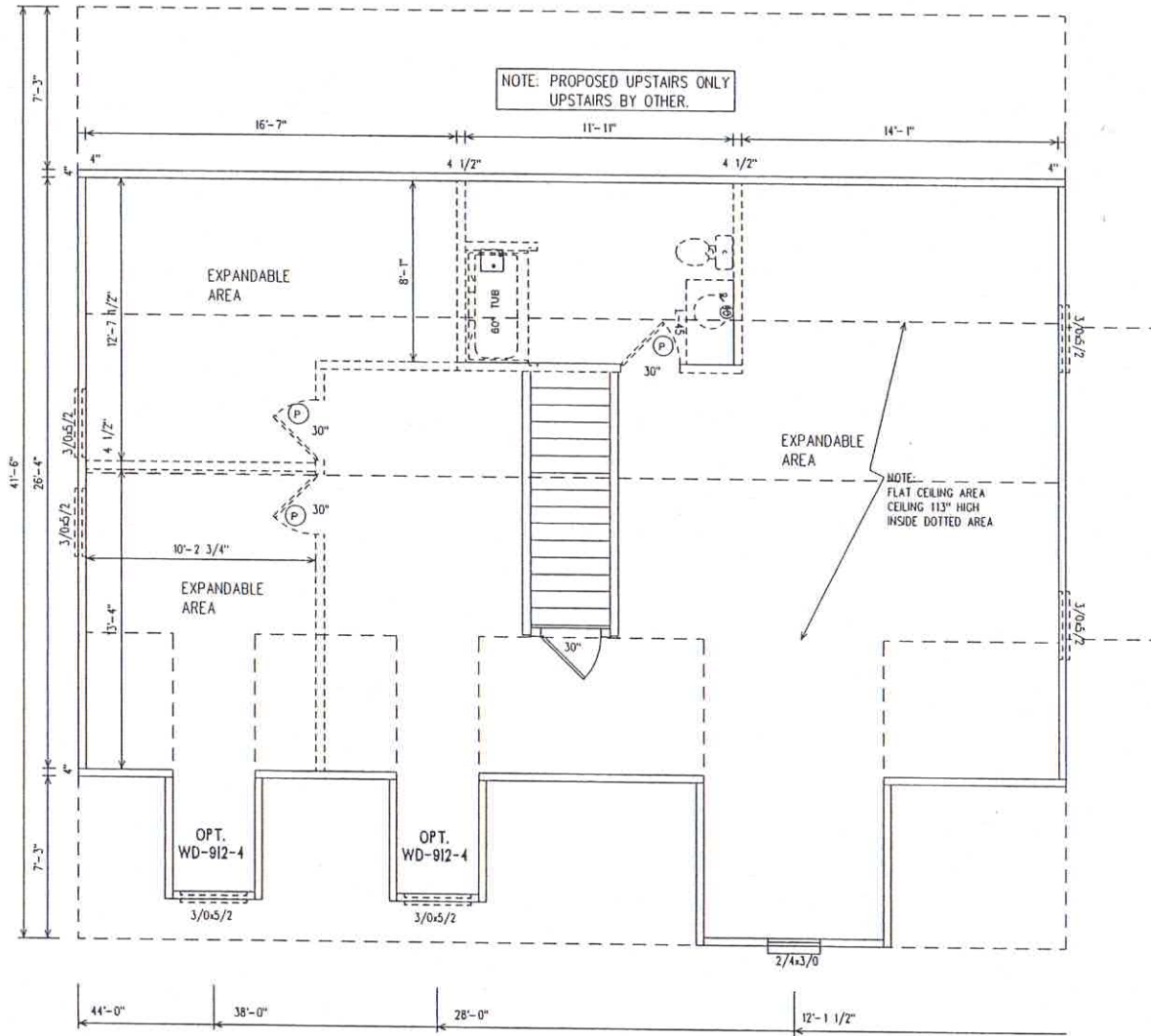


EGRESS NOTE :

EGRESS WINDOWS MUST HAVE A MINIMUM NET CLEAR OPENING OF 5.7 SQ. FT. (5.0 SQ. FT. AT GRADE LEVEL). THE MINIMUM CLEAR WIDTH SHALL BE 20 INCHES, THE MINIMUM CLEAR HEIGHT SHALL BE 24 INCHES. THE SILL HEIGHT SHALL NOT EXCEED 44 INCHES ABOVE THE FLOOR. ALL MUST BE OPERABLE FROM THE INSIDE WITHOUT THE USE OF SEPERATE TOOLS.

FLAMESPREAD NOTE :

ALL WALL AND CEILING FINISHES MUST HAVE A FLAMESPREAD CLASSIFICATION OF LESS THAN 200. THE SMOKE DENSITY DEVELOPMENT RATING SHALL NOT BE GREATER THAN 450. ALL SMOKE DETECTORS ARE PROVIDED WITH A BATTERY BACKUP.



(S) = SHELF & ROD W/SHOE RACK UNDERNEATH	(2) = 2 SHELVES
(1) = 1 SHELF	(SW) = SWEATER SHELVES
(4) = 4 SHELVES	
(DC) = DUCT CONNECTOR	
(6) = 20"X25" RAG/DOOR	(7) = 20"X25" RAG/WALL
(8) = 2"X10" OVER DOOR	(24) = 24X42 MIRROR
(40) = 40X42 MIRROR	(50) = 50X42 MIRROR
(72) = 72X42 MIRROR	

FLOOR PLAN LEGEND

E	EGRESS WINDOW	T	THERMOSTAT
EP	ELECTRICAL PANEL	S	SMOKE DETECTOR
A	22" X 30" ATRC ACCESS	P	PRIVACY LOCK
R	STEREO	SG	SAFETY GLAZED

SERIAL # 5359
MODULAR
JOB NUMBER 16094
EXPANDING NUMBER

DATE 03/01/12
DRAWN BY RR
SCALE 3/16"=1'-0"

TITLE SECOND FLOOR
DESCRIPTION / PRODUCT 810

R-ANELL HOUSING GROUP, LLC
235 ANTHONY GROVE RD. CROUSE, N.C. 28033



R-ANELL