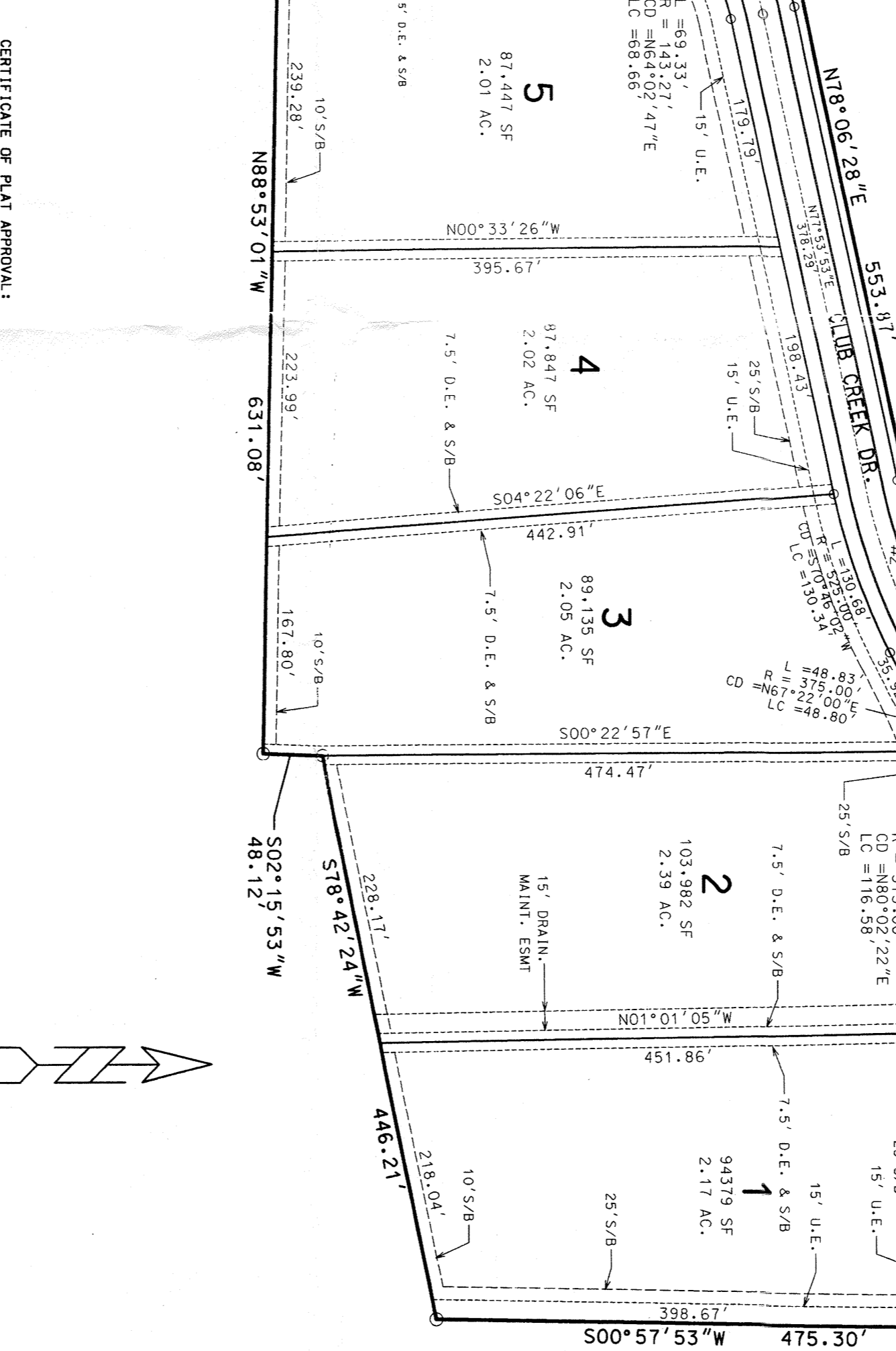
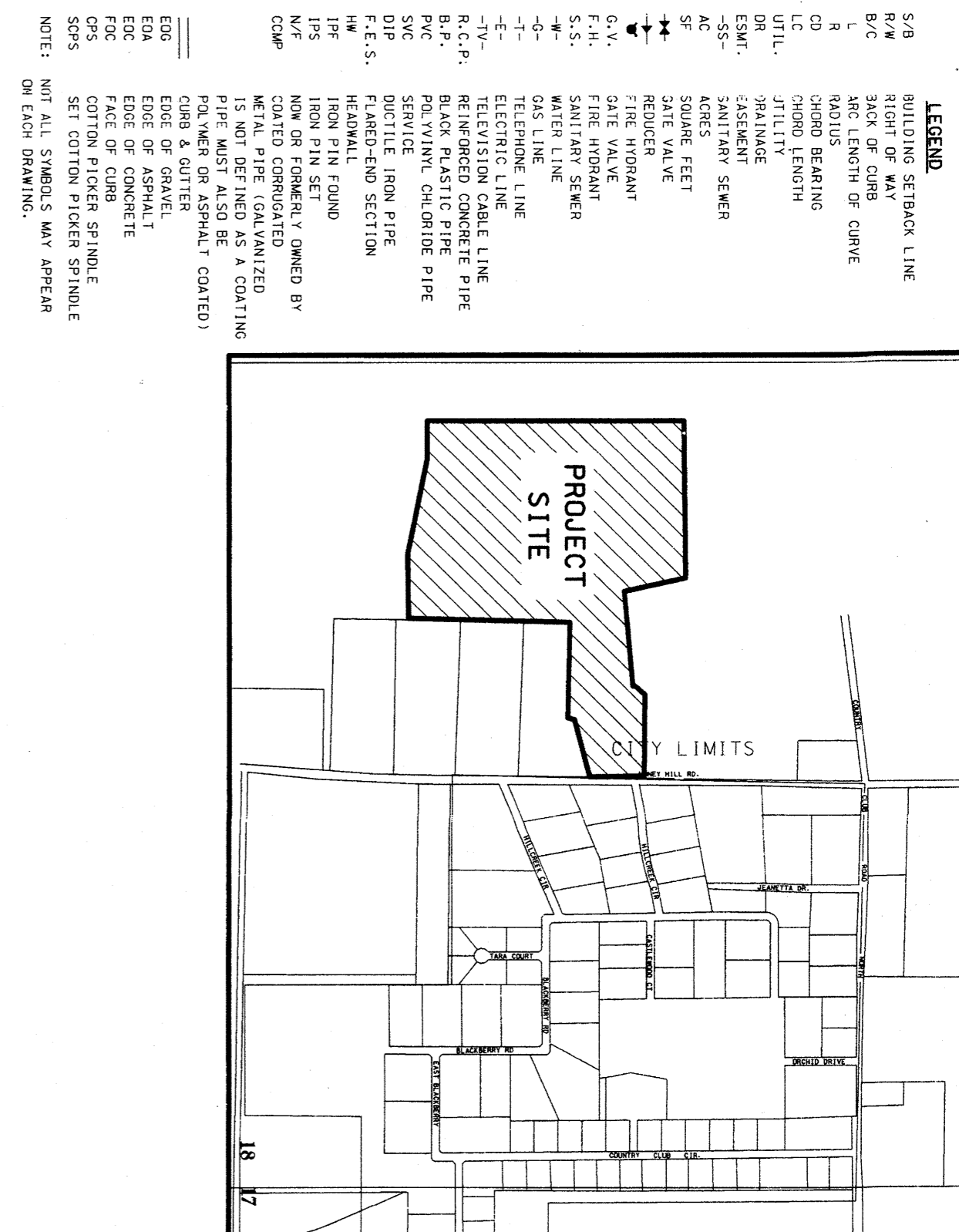


CENTRALLINE CURVE DATA

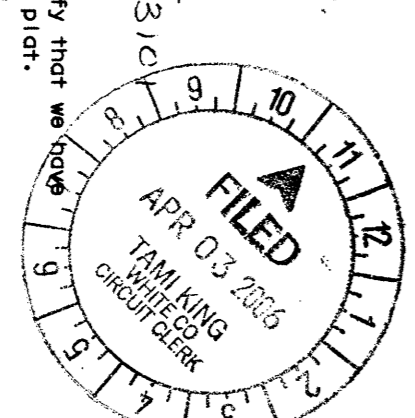
| STATION | CHORD BEARING | CHORD LENGTH | CHORD CURVATURE | CHORD AREA |
|---------|---------------|--------------|-----------------|------------|
| 1 | N 172.95° E | 400.00' | 172.95' | 172.95' |
| 2 | N 124.43° E | 500.00' | 124.43' | 124.43' |
| 3 | N 82.53° E | 168.27' | 82.53' | 82.53' |
| 4 | N 82.57° E | 172.04' | 82.57' | 82.57' |
| 5 | N 51.14° E | 172.04' | 51.14' | 51.14' |
| 6 | N 37.36° E | 286.04' | 37.36' | 37.36' |
| 7 | N 488.50° E | 286.04' | 488.50' | 488.50' |
| 8 | N 95.22° E | 200.00' | 95.22' | 95.22' |



CERTIFICATE OF PLAT APPROVAL:
 Pursuant to the Survey Subdivision Rules & Regulations, this document was approved by the Survey Planning Commission of a meeting held on the 11th day of April, 2006, at 10:45 o'clock A.M. of the Records on White County, Arkansas. In Plat Cabinet C.L., Slaves 29 of the Records of White County, Arkansas.

CERTIFICATE OF RECORDING:
 This plat is filed for record on this 3rd day of April, 2006, at 10:45 o'clock A.M. of the Records on White County, Arkansas. In Plat Cabinet C.L., Slaves 29 of the Records of White County, Arkansas.

FEES:
 RECORD FEE: \$309.00
 PLAT FEE: \$100.00
 TOTAL: \$409.00

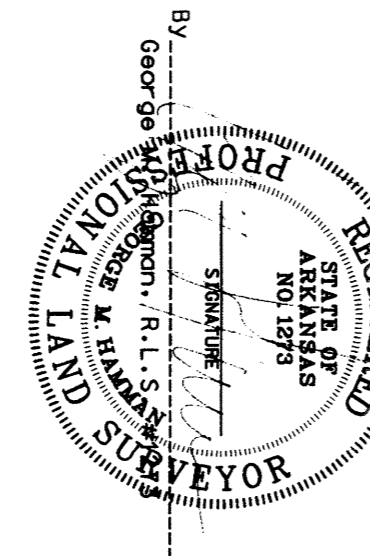


CLUB CREEK ESTATES

REVISIONS:
 REVISED 09-13-05: PER CITY COMMENTS
 REVISED 04-29-05: PER OWNERS REQUEST

ENGINEERS SURVEYORS PLANNERS
 PHIL HODGARD
 2311 East Nettleton Jonesboro, Arkansas 72401
 Telephone: (870) 932-7880

| Date | Scale | Job No. | Sheet No. |
|----------|---------|---------|-----------|
| 06-11-05 | 1"=100' | 103194 | 1 of 6 |
| 7 N | 7 W | 7 W | 1 of 6 |



CERTIFICATE OF SURVEY:
 To all parties interested in title to these premises, I hereby certify that I have prior to this day made a survey of the above described property, to the best of my knowledge and ability, and correctly established: Encroachments, if any, as disclosed by Survey, and are shown hereon as indicated.

LEGAL DESCRIPTION:
 A part of Section 18, Township 7 North, Range 7 West, White County, Arkansas
 The Northwest corner of the Southwest Quarter of the Northwest Quarter of said section 18, run S 00°04'07" W a distance of 1105.85 ft. to the POINT OF BEGINNING
 Thence N 08°24'14" E a distance of 81.66 ft. to a point;
 Thence S 08°40'22" E a distance of 474.72 ft. to a point;
 Thence N 78°06'28" E a distance of 553.87 ft. to a point;
 Thence N 43°13'08" E a distance of 70.71 ft. to a point;
 Thence S 88°11'28" W a distance of 337.78 ft. to a point;
 Thence S 86°52'58" W a distance of 220.68 ft. to a point;
 Thence N 00°05'17" E a distance of 577.36 ft. to a point;
 Thence N 00°04'46" E a distance of 308.83 ft. to a point;
 Thence N 00°04'55" E a distance of 435.13 ft. to a point;
 Thence N 00°00'13" E a distance of 342.40 ft. to a point;
 said point being the POINT OF BEGINNING, containing 60.33 acres.