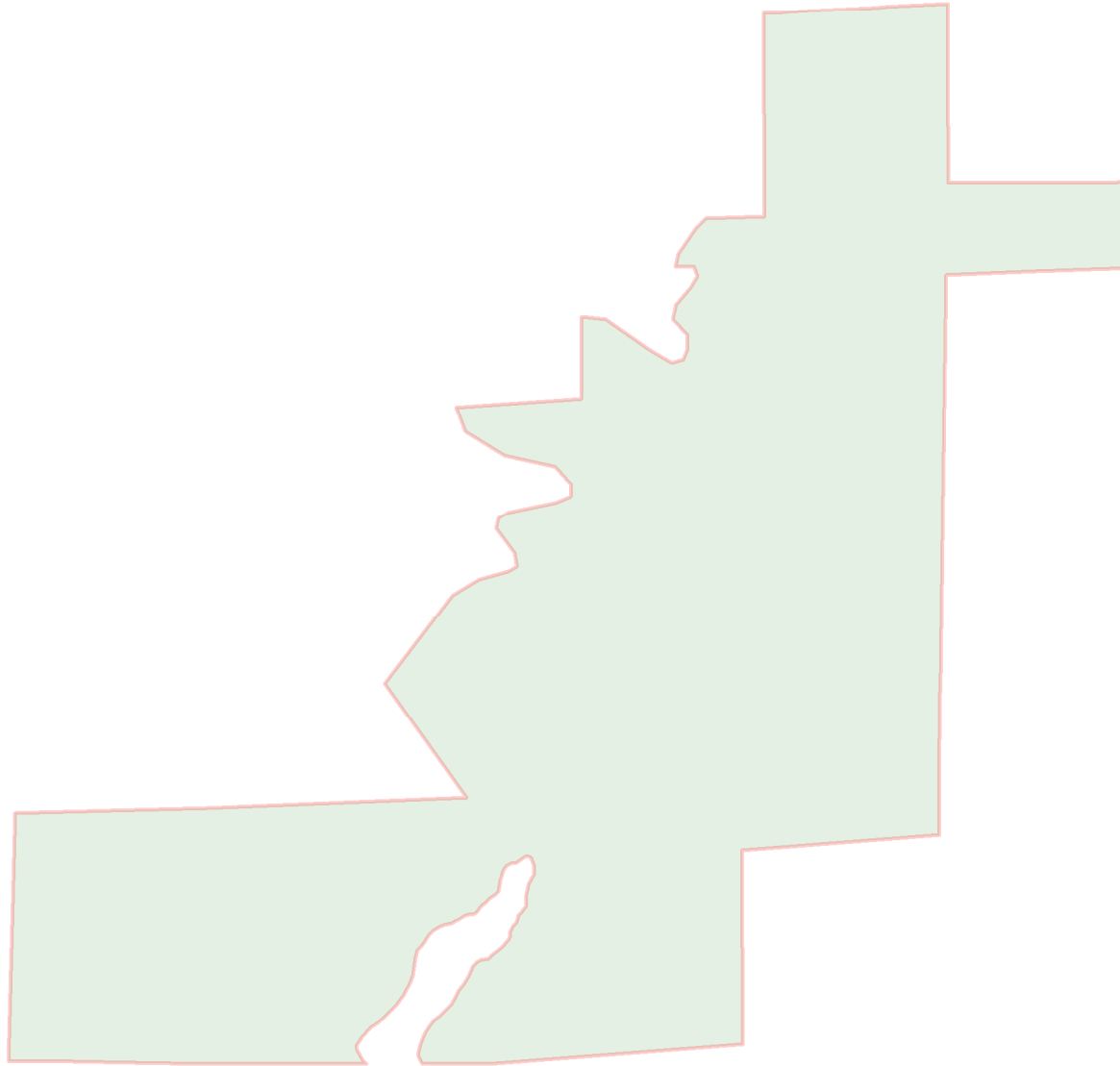
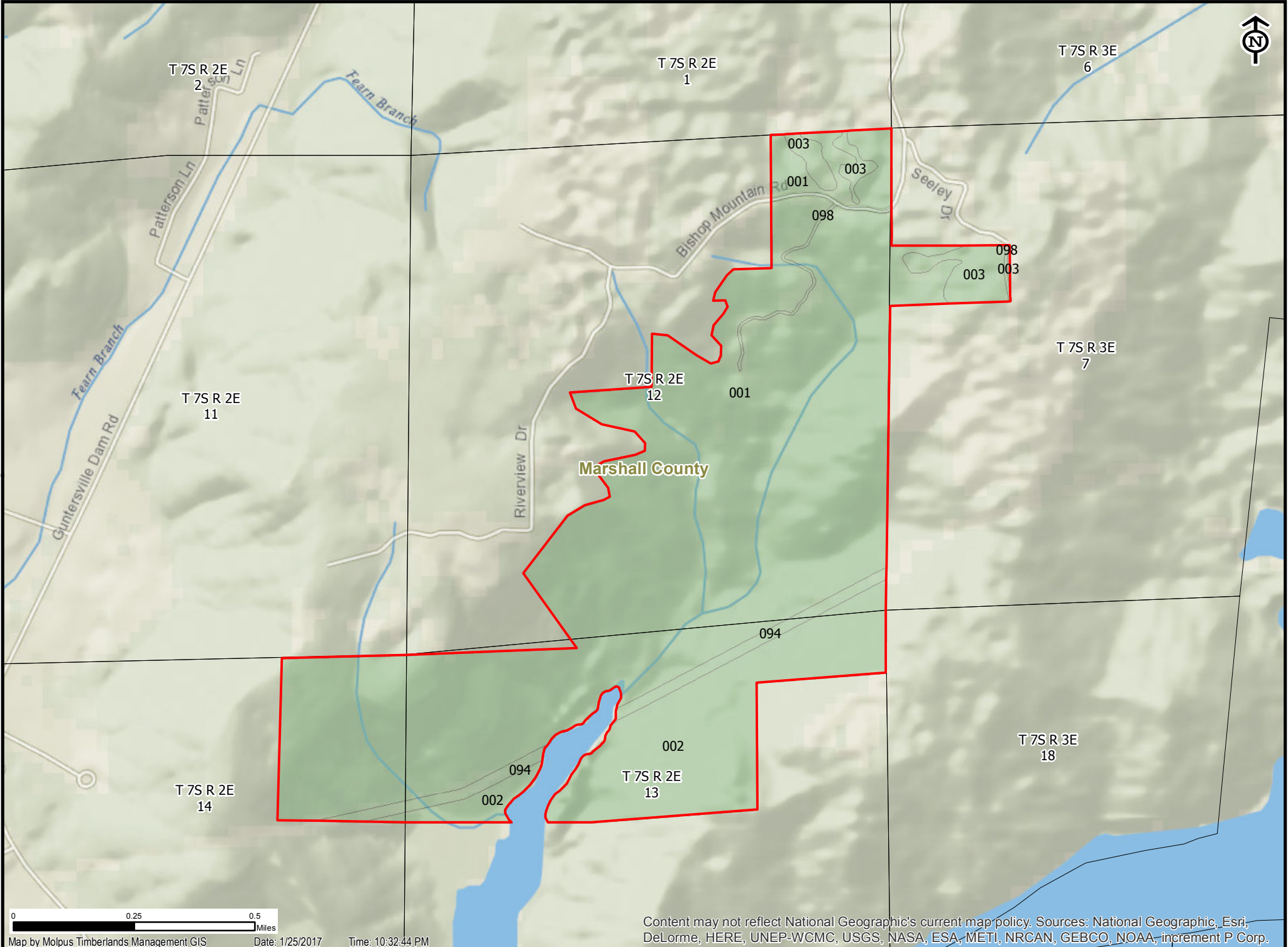


Stand	Acres	Timber Type	Species	Status	Year	Thin Pine		PST		PCNS	PPW	PTW	OSST	OSPW	OSTW	HST	HPW	BA	BA	BA	TPA	TPA	TPA
						Year	Poles	Large	PST									Pine	HWD	OS	Pine	HWD	OS
0180034001	437.5	Hardwood Upland	Other White Oak	NIH	1943	-	0.0	0.0	6.9	0.6	1.0	2.1	0.0	1.7	0.0	38.9	65.3	9.0	92.8	3.0	9.4	122.8	3.5
0180034002	94.3	Hardwood Upland	Southern Red Oak	NIH	1942	-	0.0	0.0	8.5	1.6	4.9	2.4	0.0	0.0	0.0	19.9	47.0	17.3	69.9	0.0	21.9	118.8	0.0
0180034003	16.9	Conifer Plantation	Loblolly Pine (Planted)	NIH	1999	-	0.0	0.0	5.9	47.1	48.7	4.7	0.0	0.0	0.0	0.2	1.7	147.0	3.3	0.0	381.6	13.6	0.0
0180034094	15.8	Power Line ROW	-	NIH	-	-	-	-	-	-	-	-	-	-	-	-	-	-	-	-	-	-	-
0180034098	3.4	Company Roads	-	NIH	-	-	-	-	-	-	-	-	-	-	-	-	-	-	-	-	-	-	-





Map by Molpus Timberlands Management GIS Date: 1/25/2017 Time: 10:32:44 PM

Content may not reflect National Geographic's current map policy. Sources: National Geographic, Esri, DeLorme, HERE, UNEP-WCMC, USGS, NASA, ESA, METI, NRCAN, GEBCO, NOAA, increment P Corp.

The management boundaries on this map do not necessarily represent the legal description of this property. Due to continuous land management activities, the stand boundary lines represented on this map may not reflect the actual conditions on the ground.

