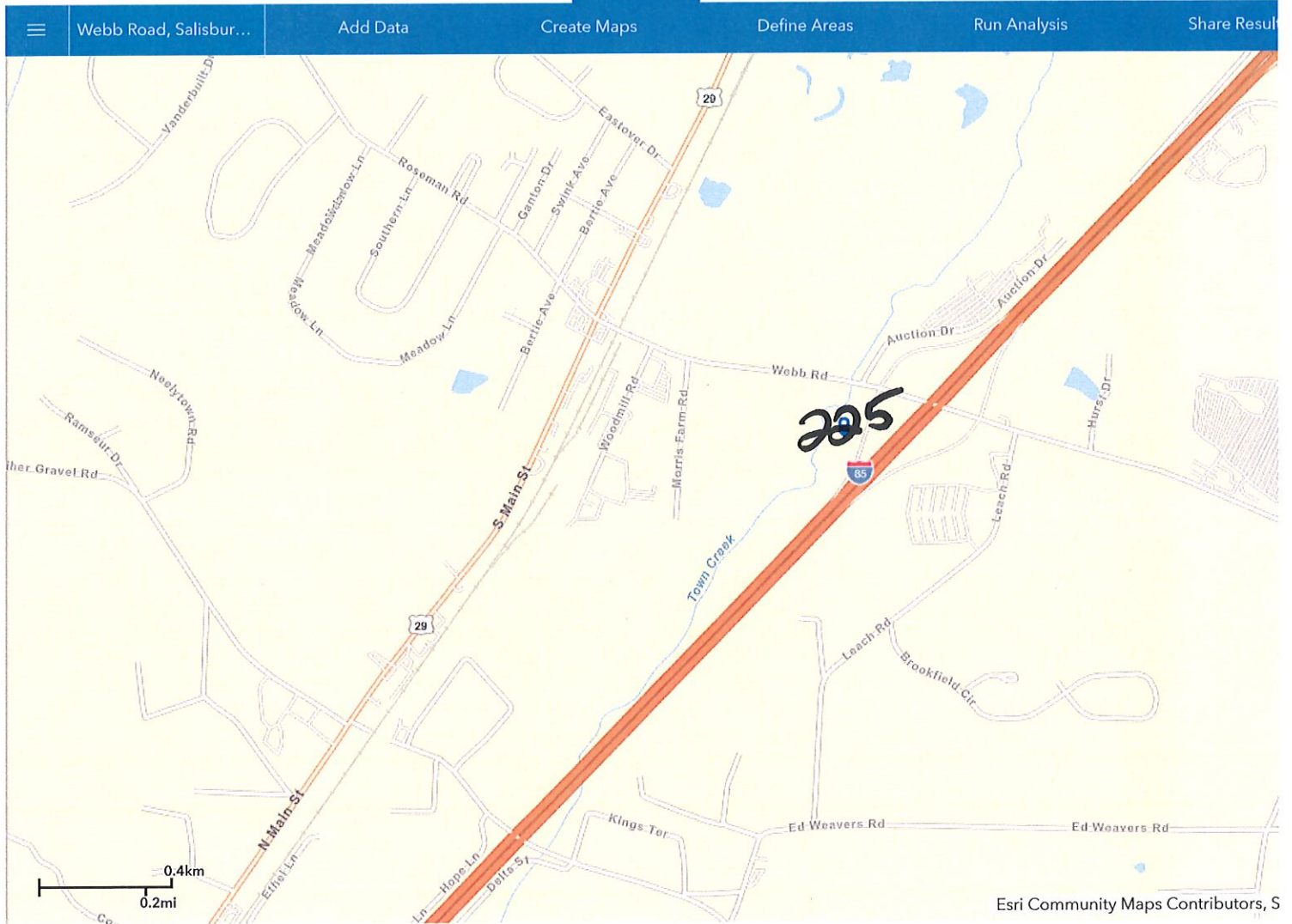


My Map



NCDOT Lot 225

300ft
NC CGIA, USDA FSA



- Traffic Count on Surface Streets
- Traffic Count on Highways



Home ▾ 2018 USA Traffic Counts

Details

Add

Basemap

Analysis

Save

Share

Print

Directions

Measure

Bc

About

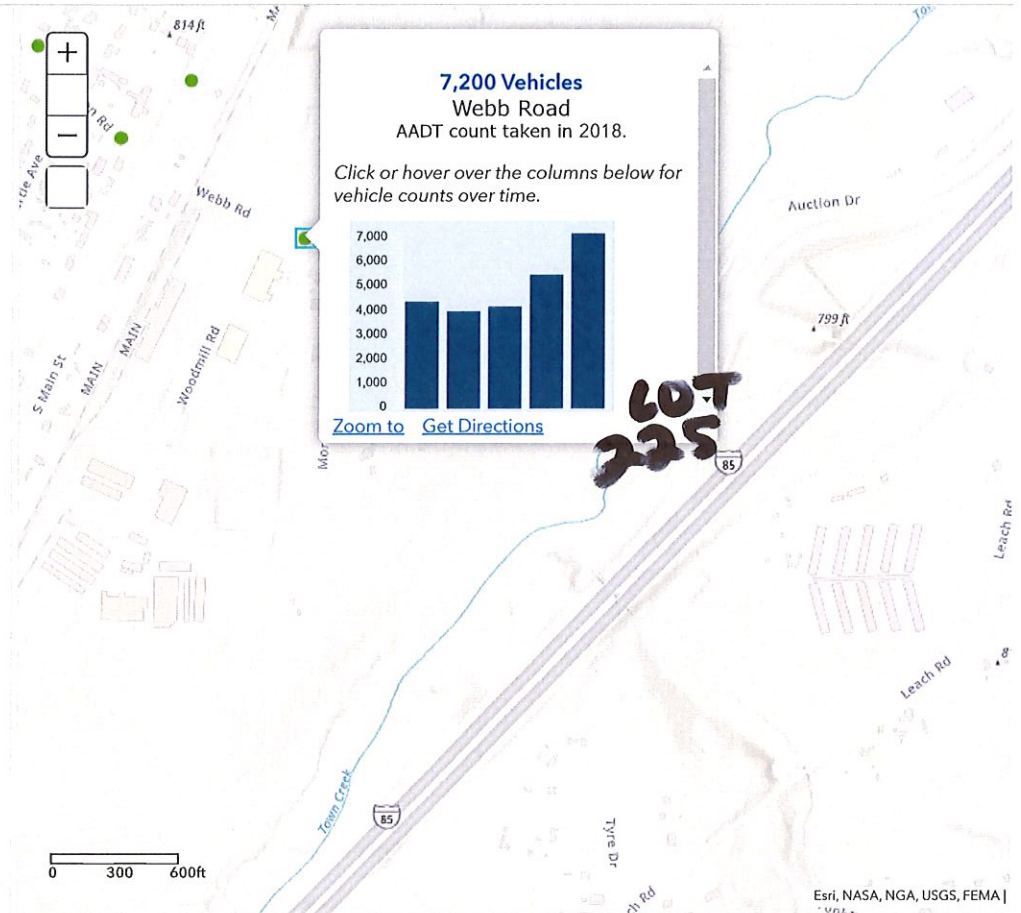
Content

Legend

Legend

2018 USA Traffic Counts

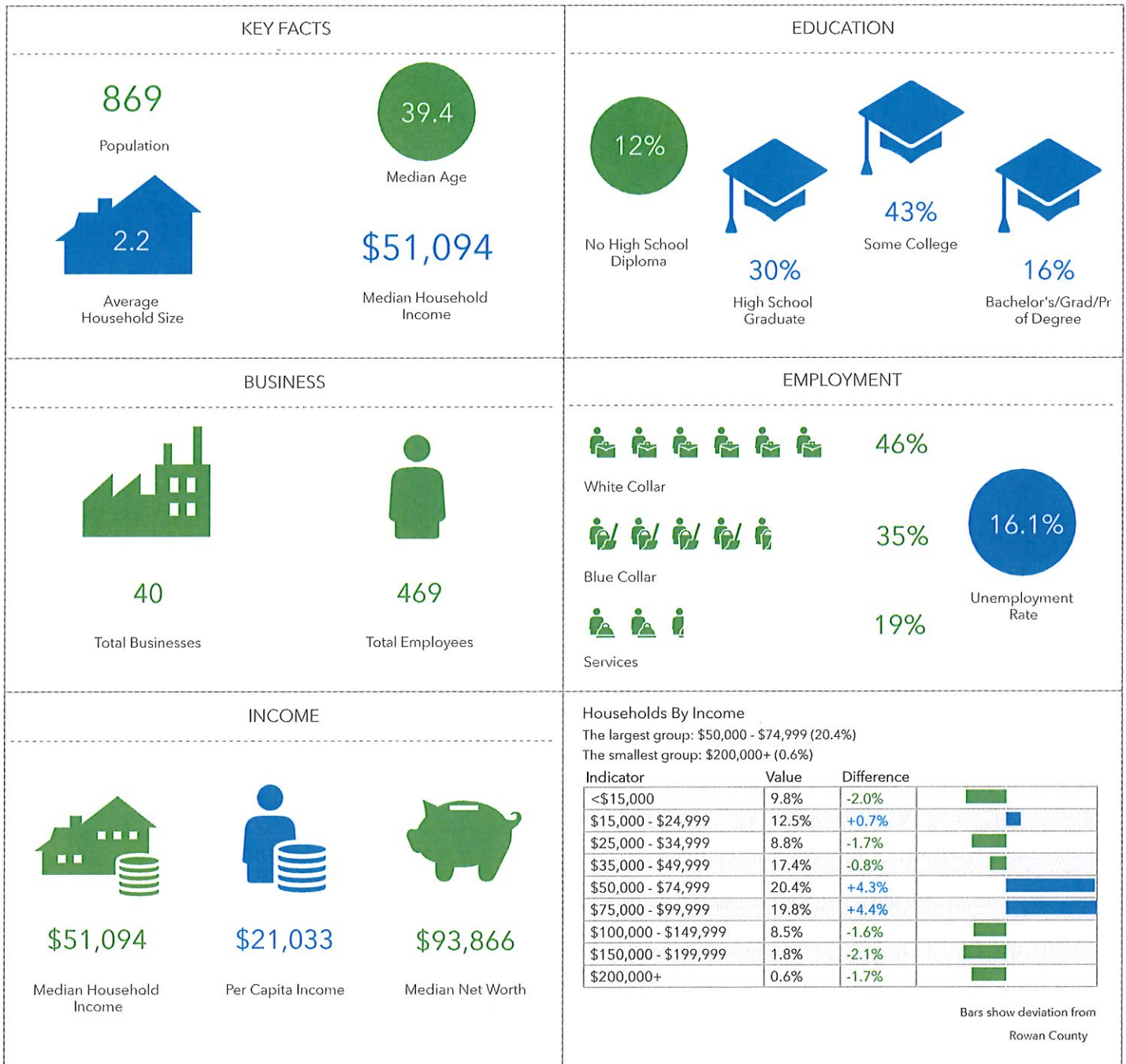
- Traffic Count on Surface Streets
- Traffic Count on Highways



Key Facts Webb Rd I-85

28147, Salisbury, North Carolina (1 mile)
28147, Salisbury, North Carolina
Ring of 1 mile

Prepared by Esri
Latitude: 35.59900
Longitude: -80.53426



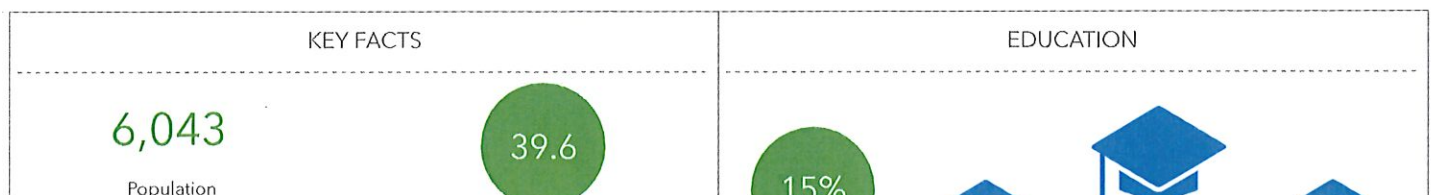
This infographic contains data provided by Esri, Esri and Infogroup. The vintage of the data is 2020, 2025.

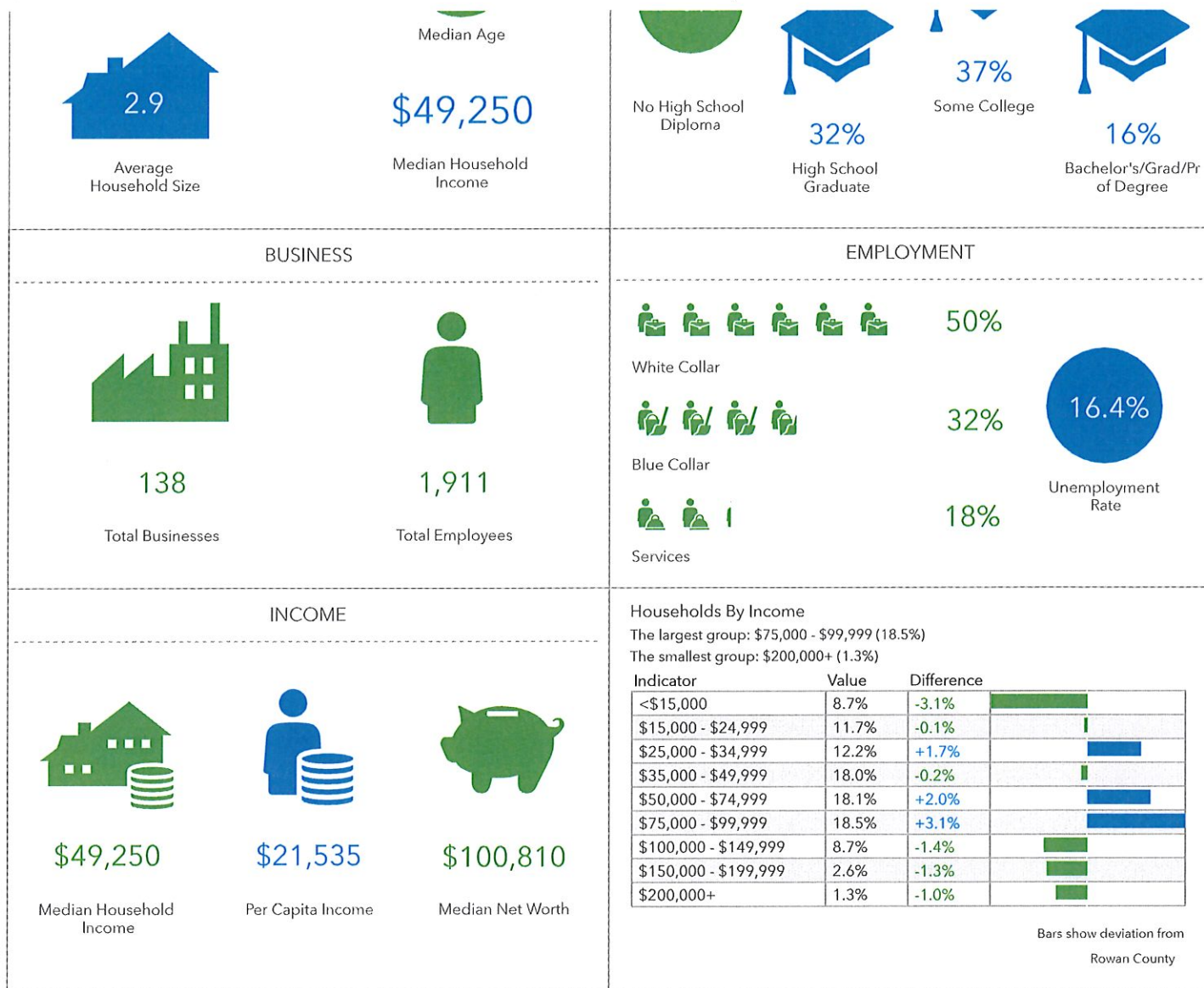
© 2020 Esri

Key Facts Webb Rd I-85

28147, Salisbury, North Carolina (2 miles)
28147, Salisbury, North Carolina
Ring of 2 miles

Prepared by Esri
Latitude: 35.59900
Longitude: -80.53426





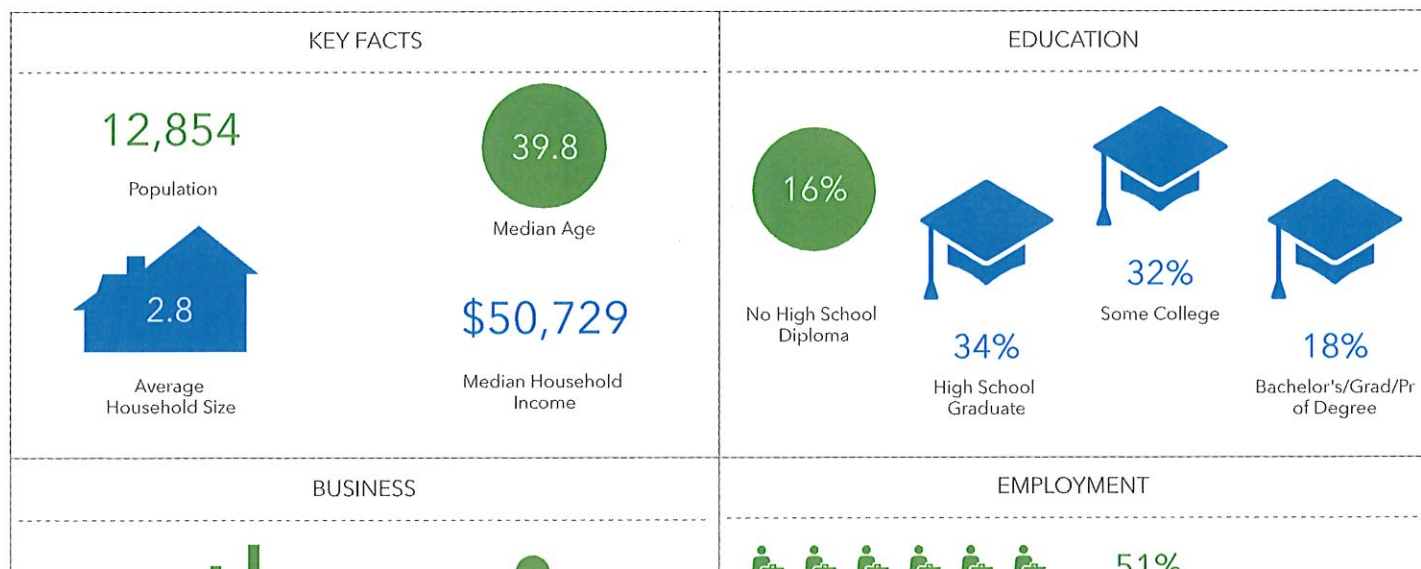
This infographic contains data provided by Esri, Esri and Infogroup. The vintage of the data is 2020, 2025.

© 2020 Esri

Key Facts Webb Rd I-85

28147, Salisbury, North Carolina (3 miles)
28147, Salisbury, North Carolina
Ring of 3 miles

Prepared by Esri
Latitude: 35.59900
Longitude: -80.53426





306

Total Businesses



4,040

Total Employees

Business Analyst

White Collar



35%

Blue Collar



14%

Services

Unemployment
Rate

INCOME



\$50,729

Median Household
Income

\$24,076

Per Capita Income



\$110,383

Median Net Worth

Households By Income

The largest group: \$35,000 - \$49,999 (17.8%)

The smallest group: \$200,000+ (2.9%)

Indicator	Value	Difference	
<\$15,000	7.9%	-3.9%	
\$15,000 - \$24,999	12.0%	+0.2%	
\$25,000 - \$34,999	11.6%	+1.1%	
\$35,000 - \$49,999	17.8%	-0.4%	
\$50,000 - \$74,999	16.3%	+0.2%	
\$75,000 - \$99,999	17.6%	+2.2%	
\$100,000 - \$149,999	10.4%	+0.3%	
\$150,000 - \$199,999	3.5%	-0.4%	
\$200,000+	2.9%	+0.6%	

Bars show deviation from
Rowan County

This infographic contains data provided by Esri, Esri and Infogroup. The vintage of the data is 2020, 2025.

© 2020 Esri