

LXINGTON MANOR

510 LEXINGTON MANOR LANE EADS, TENNESSEE 38028



OPEN HOUSE FOR QUALIFIED BUYERS
SUNDAY, JUNE 23RD, 2PM - 4PM



PRESENTED BY

WWW.JOHNROEBUCKAUCTIONS.COM

901 . 763 . 2825

&

WWW.HARBUR.COM

901 . 878 . 3308

LEXINGTON MANOR

510 LEXINGTON MANOR LANE EADS, TENNESSEE



510 Lexington Manor Lane

This luxurious estate in Eads, Tennessee built by Hank Hill Custom Building includes a swimming pool professionally designed and landscaped by Brewer's Pools, private clubhouse all on 6± acres of beautiful flowing landscapes that will definitely catch your attention.



[Scan the code to come in and take a look around the Lexington Manor Estate with this 360 Matterport Tour!](#)

<http://bit.ly/510LexingtonManor>

WWW.JOHNROEBUCKAUCTIONS.COM
WWW.HARBUR.COM

LEXINGTON MANOR

Main House Downstairs:

- **Master bedroom suite**
2 large closets - one is a "dressing room/closet"
His & Hers bathrooms with double shower, large bath tub and vanity areas
Electric shades, a really cool fan, sitting area, coffee bar area with sink
- **Guest Room** with full bath and separate front entrance near guest room
- **Dining Room** beautiful natural light and wood floors
- **Formal Living Room** with fireplace and built-in book shelves
- **Bar/Butler's pantry** with warming drawers, wet bar, storage for glassware
- **Front Office** with fireplace and built-in shelving
- **Large Entryway** with beautiful staircase with wrought-iron rails
- **Kitchen** with large pantry, Viking stove top, refrigerator and microwave, double ovens, pot filler faucet,
- **Den** with wet bar and fireplace - ceiling beams
- **Laundry Room** and separate "Gift wrap" room
- **2 Powder rooms**

Over main house garage:

- **Media Room** with full bathroom (or use as a exercise/workout room)
- **Main house has a 3 car garage** with keypad entry and workshop area

Other upstairs:

- **4 bedrooms with 4 full bathrooms** (2 on each side of media room)
- **Media Room** in between (or use for an office)
- **2nd Laundry Room** conveniently situated for upstairs bedrooms & baths

Perfectly situated in a fantastic location close to the big city and still far enough out to enjoy the quiet peaceful Enclave of Sparkle Creek community in Eads, Tennessee. Only five minutes away from Briarcrest Christian School and St. George's Schools.



LEXINGTON MANOR

Master Bedroom Suite:

2 large closets – one is a “dressing room/closet”
His & Hers bathrooms with double shower, large bath tub and vanity areas
Electric shades, a really cool fan, sitting area, coffee bar area with sink



WWW.JOHNROEBUCKAUCTIONS.COM
WWW.HARBUR.COM

LEXINGTON MANOR

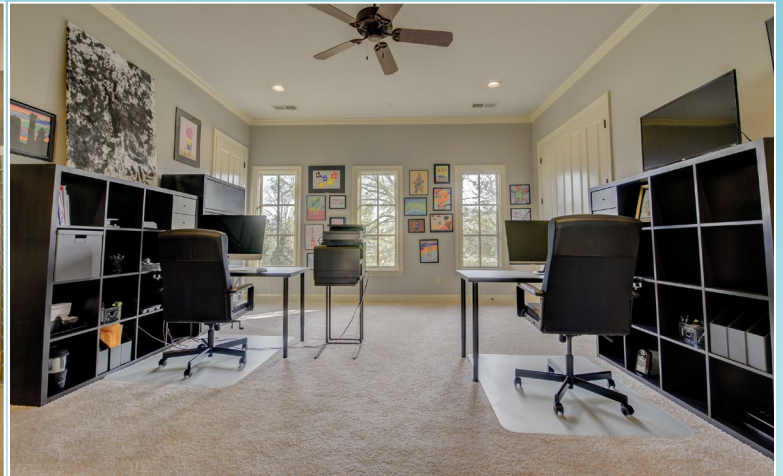
Main House Upstairs:

Over main house garage:

- **Media Room** with full bathroom (or use as a exercise/workout room)
- **Main house** has a 3 car garage with keypad entry and workshop area

Other upstairs:

- **4 bedrooms** with **4 full bathrooms** (2 on each side of media room) great for families large or small with room to grow.
- **Media Room** in between (or use for an office)
- **Laundry Room** conveniently situated for upstairs bed rooms & baths



LEXINGTON MANOR

510 LEXINGTON MANOR LANE EADS, TENNESSEE

Pool/Clubhouse:

- Large entertaining room with sliding glass doors with screens
- Full kitchen with large pantry
- 2 separate bathrooms
- Bathroom #1 has 2 toilets, a sink a shower and separate steam shower, washer & dryer connections and 3 closets
- Bathroom #2 has a toilet, a urinal, a shower and separate steam shower, washer & dryer connections and 3 closets
- Attached, climate controlled garage with room for multiple vehicles and 2 large utility rooms
- Separate room for pool equipment



WWW.JOHNROEBUCKAUCTIONS.COM
WWW.HARBUR.COM

LEXINGTON MANOR

Pool House Apartment:

- Full kitchen
- Living room area
- Office
- Media room or bedroom
- Dining area
- Laundry room
- 2 bedrooms
- Full bathroom



LEXINGTON MANOR

Outside

- The estate sits nestled on 6± acres lined by trees for extra privacy by the pool
- Pool professionally designed and maintained by **Brewer's Pools** with lighting, stone waterfall, ledges for lounging with built-in umbrella holders
- Sprinkler system
- Exterior decorative lighting
- Circular driveway

Perfectly situated in a fantastic location close to shopping, churches, hospitals and schools, also secluded enough to enjoy the quiet peaceful Enclave of Sparkle Creek community in Eads, Tennessee. Only five minutes away from Briarcrest Christian School and St. George's Schools.



WWW.JOHNROEBUCKAUCTIONS.COM

WWW.HARBUR.COM

PRESENTED BY

JDR Auction Services of FL, LLC (dba)

JOHN ROEBUCK AUCTIONS

5118 PARK AVE, SUITE 209 MEMPHIS, TN 38117
901 . 763 . 2825

HARBUR REALTY
Navigating Real Estate Success

135 LAKE MIST DRIVE, PIPERTON, TN 38017
901 . 878 . 3308



SCAN THE CODE FOR
MORE PHOTOS & INFORMATION AND TO
VIEW THE 360 VIDEO ON OUR WEBSITE!

<http://bit.ly/510LexingtonManor>

Real Estate Terms & Conditions:

Information provided is derived from sources believed to be correct, but is not guaranteed. Graphics are approximate. All property sold "as is." The Seller will provide a valid clear marketable title to the property.

Get our Mobile App
for iPhone or Android
device and
Bid from anywhere!



Roebuck
Auctions

JDR Auction Services of FL, LLC (dba) **JOHN ROEBUCK AUCTIONS**

AL #823 • FL #CQ1042959 • GA #166853 KY #RP811 • LA #AB-292 • MS #276F • SC #73182 • TN #5896

WWW.JOHNROEBUCKAUCTIONS.COM
901-LANDMAN(526.3626) • 901-486-0839



@901Landman