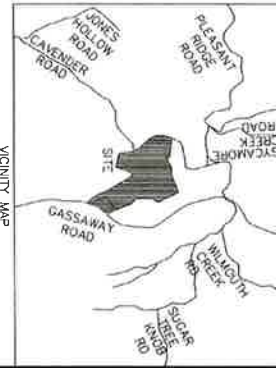
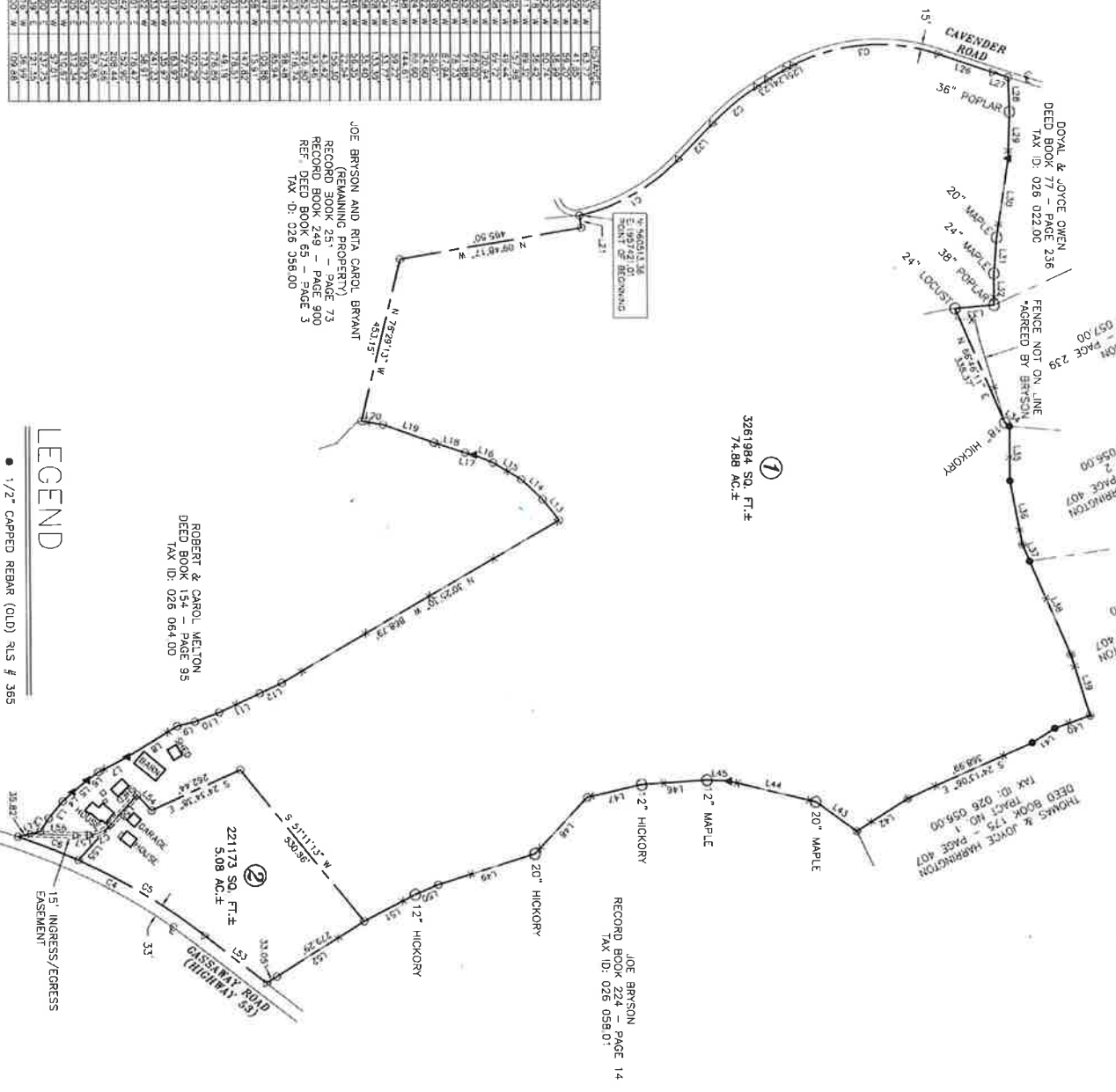


TN GRID NORTH



VICINITY MAP
NOT TO SCALE



STATION	BEARING	DISTANCE	REMARKS
1	N 88°48'17\"	485.50	MONUMENT
2	N 78°21'12\"	434.15	MONUMENT
3	N 78°21'12\"	434.15	MONUMENT
4	N 78°21'12\"	434.15	MONUMENT
5	N 78°21'12\"	434.15	MONUMENT
6	N 78°21'12\"	434.15	MONUMENT
7	N 78°21'12\"	434.15	MONUMENT
8	N 78°21'12\"	434.15	MONUMENT
9	N 78°21'12\"	434.15	MONUMENT
10	N 78°21'12\"	434.15	MONUMENT
11	N 78°21'12\"	434.15	MONUMENT
12	N 78°21'12\"	434.15	MONUMENT
13	N 78°21'12\"	434.15	MONUMENT
14	N 78°21'12\"	434.15	MONUMENT
15	N 78°21'12\"	434.15	MONUMENT
16	N 78°21'12\"	434.15	MONUMENT
17	N 78°21'12\"	434.15	MONUMENT
18	N 78°21'12\"	434.15	MONUMENT
19	N 78°21'12\"	434.15	MONUMENT
20	N 78°21'12\"	434.15	MONUMENT
21	N 78°21'12\"	434.15	MONUMENT
22	N 78°21'12\"	434.15	MONUMENT
23	N 78°21'12\"	434.15	MONUMENT
24	N 78°21'12\"	434.15	MONUMENT
25	N 78°21'12\"	434.15	MONUMENT
26	N 78°21'12\"	434.15	MONUMENT
27	N 78°21'12\"	434.15	MONUMENT
28	N 78°21'12\"	434.15	MONUMENT
29	N 78°21'12\"	434.15	MONUMENT
30	N 78°21'12\"	434.15	MONUMENT
31	N 78°21'12\"	434.15	MONUMENT
32	N 78°21'12\"	434.15	MONUMENT
33	N 78°21'12\"	434.15	MONUMENT
34	N 78°21'12\"	434.15	MONUMENT
35	N 78°21'12\"	434.15	MONUMENT
36	N 78°21'12\"	434.15	MONUMENT
37	N 78°21'12\"	434.15	MONUMENT
38	N 78°21'12\"	434.15	MONUMENT
39	N 78°21'12\"	434.15	MONUMENT
40	N 78°21'12\"	434.15	MONUMENT
41	N 78°21'12\"	434.15	MONUMENT
42	N 78°21'12\"	434.15	MONUMENT
43	N 78°21'12\"	434.15	MONUMENT
44	N 78°21'12\"	434.15	MONUMENT
45	N 78°21'12\"	434.15	MONUMENT
46	N 78°21'12\"	434.15	MONUMENT
47	N 78°21'12\"	434.15	MONUMENT
48	N 78°21'12\"	434.15	MONUMENT
49	N 78°21'12\"	434.15	MONUMENT
50	N 78°21'12\"	434.15	MONUMENT
51	N 78°21'12\"	434.15	MONUMENT
52	N 78°21'12\"	434.15	MONUMENT
53	N 78°21'12\"	434.15	MONUMENT
54	N 78°21'12\"	434.15	MONUMENT
55	N 78°21'12\"	434.15	MONUMENT
56	N 78°21'12\"	434.15	MONUMENT
57	N 78°21'12\"	434.15	MONUMENT
58	N 78°21'12\"	434.15	MONUMENT
59	N 78°21'12\"	434.15	MONUMENT
60	N 78°21'12\"	434.15	MONUMENT
61	N 78°21'12\"	434.15	MONUMENT
62	N 78°21'12\"	434.15	MONUMENT
63	N 78°21'12\"	434.15	MONUMENT
64	N 78°21'12\"	434.15	MONUMENT
65	N 78°21'12\"	434.15	MONUMENT
66	N 78°21'12\"	434.15	MONUMENT
67	N 78°21'12\"	434.15	MONUMENT
68	N 78°21'12\"	434.15	MONUMENT
69	N 78°21'12\"	434.15	MONUMENT
70	N 78°21'12\"	434.15	MONUMENT
71	N 78°21'12\"	434.15	MONUMENT
72	N 78°21'12\"	434.15	MONUMENT
73	N 78°21'12\"	434.15	MONUMENT
74	N 78°21'12\"	434.15	MONUMENT
75	N 78°21'12\"	434.15	MONUMENT
76	N 78°21'12\"	434.15	MONUMENT
77	N 78°21'12\"	434.15	MONUMENT
78	N 78°21'12\"	434.15	MONUMENT
79	N 78°21'12\"	434.15	MONUMENT
80	N 78°21'12\"	434.15	MONUMENT

STATION	BEARING	DISTANCE	REMARKS
1	N 78°21'12\"	434.15	MONUMENT
2	N 78°21'12\"	434.15	MONUMENT
3	N 78°21'12\"	434.15	MONUMENT
4	N 78°21'12\"	434.15	MONUMENT
5	N 78°21'12\"	434.15	MONUMENT
6	N 78°21'12\"	434.15	MONUMENT
7	N 78°21'12\"	434.15	MONUMENT
8	N 78°21'12\"	434.15	MONUMENT
9	N 78°21'12\"	434.15	MONUMENT
10	N 78°21'12\"	434.15	MONUMENT
11	N 78°21'12\"	434.15	MONUMENT
12	N 78°21'12\"	434.15	MONUMENT
13	N 78°21'12\"	434.15	MONUMENT
14	N 78°21'12\"	434.15	MONUMENT
15	N 78°21'12\"	434.15	MONUMENT
16	N 78°21'12\"	434.15	MONUMENT
17	N 78°21'12\"	434.15	MONUMENT
18	N 78°21'12\"	434.15	MONUMENT
19	N 78°21'12\"	434.15	MONUMENT
20	N 78°21'12\"	434.15	MONUMENT
21	N 78°21'12\"	434.15	MONUMENT
22	N 78°21'12\"	434.15	MONUMENT
23	N 78°21'12\"	434.15	MONUMENT
24	N 78°21'12\"	434.15	MONUMENT
25	N 78°21'12\"	434.15	MONUMENT
26	N 78°21'12\"	434.15	MONUMENT
27	N 78°21'12\"	434.15	MONUMENT
28	N 78°21'12\"	434.15	MONUMENT
29	N 78°21'12\"	434.15	MONUMENT
30	N 78°21'12\"	434.15	MONUMENT
31	N 78°21'12\"	434.15	MONUMENT
32	N 78°21'12\"	434.15	MONUMENT
33	N 78°21'12\"	434.15	MONUMENT
34	N 78°21'12\"	434.15	MONUMENT
35	N 78°21'12\"	434.15	MONUMENT
36	N 78°21'12\"	434.15	MONUMENT
37	N 78°21'12\"	434.15	MONUMENT
38	N 78°21'12\"	434.15	MONUMENT
39	N 78°21'12\"	434.15	MONUMENT
40	N 78°21'12\"	434.15	MONUMENT
41	N 78°21'12\"	434.15	MONUMENT
42	N 78°21'12\"	434.15	MONUMENT
43	N 78°21'12\"	434.15	MONUMENT
44	N 78°21'12\"	434.15	MONUMENT
45	N 78°21'12\"	434.15	MONUMENT
46	N 78°21'12\"	434.15	MONUMENT
47	N 78°21'12\"	434.15	MONUMENT
48	N 78°21'12\"	434.15	MONUMENT
49	N 78°21'12\"	434.15	MONUMENT
50	N 78°21'12\"	434.15	MONUMENT
51	N 78°21'12\"	434.15	MONUMENT
52	N 78°21'12\"	434.15	MONUMENT
53	N 78°21'12\"	434.15	MONUMENT
54	N 78°21'12\"	434.15	MONUMENT
55	N 78°21'12\"	434.15	MONUMENT
56	N 78°21'12\"	434.15	MONUMENT
57	N 78°21'12\"	434.15	MONUMENT
58	N 78°21'12\"	434.15	MONUMENT
59	N 78°21'12\"	434.15	MONUMENT
60	N 78°21'12\"	434.15	MONUMENT
61	N 78°21'12\"	434.15	MONUMENT
62	N 78°21'12\"	434.15	MONUMENT
63	N 78°21'12\"	434.15	MONUMENT
64	N 78°21'12\"	434.15	MONUMENT
65	N 78°21'12\"	434.15	MONUMENT
66	N 78°21'12\"	434.15	MONUMENT
67	N 78°21'12\"	434.15	MONUMENT
68	N 78°21'12\"	434.15	MONUMENT
69	N 78°21'12\"	434.15	MONUMENT
70	N 78°21'12\"	434.15	MONUMENT
71	N 78°21'12\"	434.15	MONUMENT
72	N 78°21'12\"	434.15	MONUMENT
73	N 78°21'12\"	434.15	MONUMENT
74	N 78°21'12\"	434.15	MONUMENT
75	N 78°21'12\"	434.15	MONUMENT
76	N 78°21'12\"	434.15	MONUMENT
77	N 78°21'12\"	434.15	MONUMENT
78	N 78°21'12\"	434.15	MONUMENT
79	N 78°21'12\"	434.15	MONUMENT
80	N 78°21'12\"	434.15	MONUMENT

- ### LEGEND
- 1/2" CAPPED REBAR (OLD) R.I.S # 365
 - 1/2" UNCAPPED REBAR (OLD)
 - ▲ MONUMENT NEITHER SET NOR FOUND
 - ▼ STEEL T-POST (OLD)
 - 5/8" CAPPED REBAR (NEW) R.I.S # 2712
 - TREE (TYPE AND SIZE AS NOTED)
 - ▲ CONTROL POINT
 - - - FENCE
 - - - PROPERTY BOUNDARY



SURVEYOR'S CERTIFICATE

I hereby certify, to the best of my knowledge and belief, that the survey shown hereon is representative with the current Tennessee Minimum Standards of Practice.

Date: 3/4/24

Registering Land Surveyor

JOE BRYSON AND RITA CAROL BRYANT		
DRAWN BY	DATE	4841/4869 Gassaway Rd, Woodbury, TN 37190
MRM	3/4/24	
RFI DB 65-3	248-900	Common County
RFI DB 65-3	43-513	15th Civil District
028 088.00	P/O 028 088.00	
SCALE	ACR/PAGE	PROJECT NO.
1" = 100'	79.98 AC.±	24034

MOORE

208 N. CHANCERY ST.
MCMINNVILLE, TN
931.473.1088
MICHAEL@MOORELANDSURVEYS.COM

NOTE: This survey was performed with RTK GPS positional data observed between the dates of 2-8-24 and 3-4-24 utilizing a Topcon HiPer HR dual frequency receiver, the grid coordinates of the control point (N:539897.12, E:1957426.52, hub north with plastic disc) were derived using a VMS network of CORS stations projected to TN SFC83 datum. NAD 83. Geoid: Gcnhdn03s_202501B not essential. H: 5 centim + 0.5 ppm. The combined grid factor used for this survey is 0.99989574 centered upon the control point, listed herein.