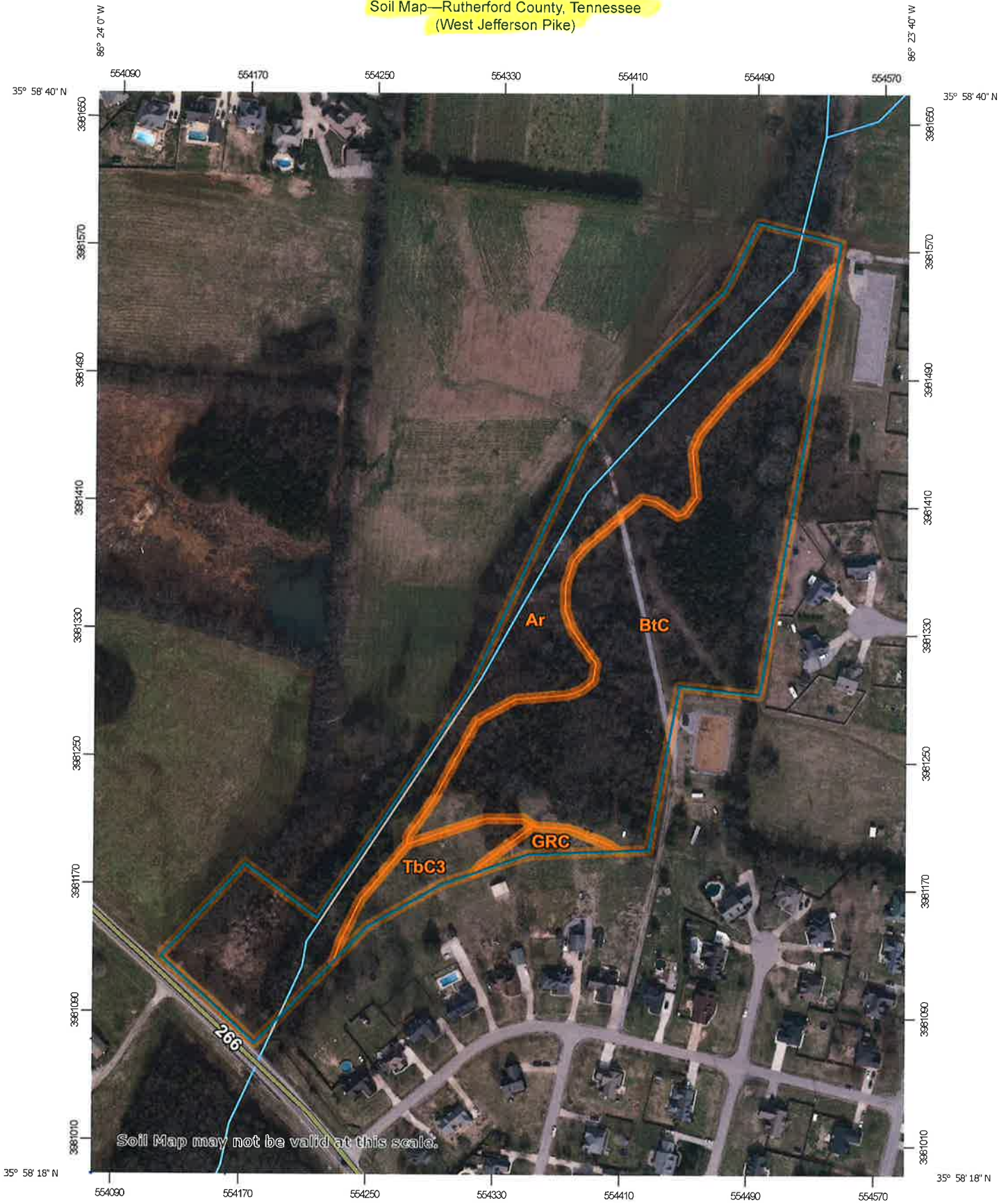
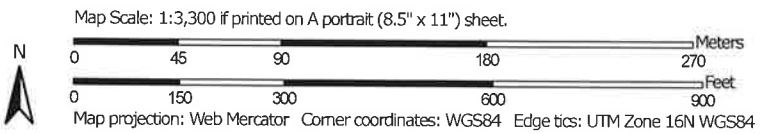


Soil Map—Rutherford County, Tennessee
(West Jefferson Pike)



Soil Map may not be valid at this scale.



Map Unit Legend

Map Unit Symbol	Map Unit Name	Acres in AOI	Percent of AOI
Ar	Arrington silt loam, 0 to 2 percent slopes, occasionally flooded	6.8	43.1%
BtC	Bradyville-Rock outcrop complex, 2 to 12 percent slopes	7.9	50.4%
GRC	Gladeville-Rock outcrop complex, 2 to 15 percent slopes, extremely stony	0.2	1.6%
TbC3	Talbott silty clay loam, 5 to 12 percent slopes, severely eroded	0.8	4.9%
Totals for Area of Interest		15.7	100.0%