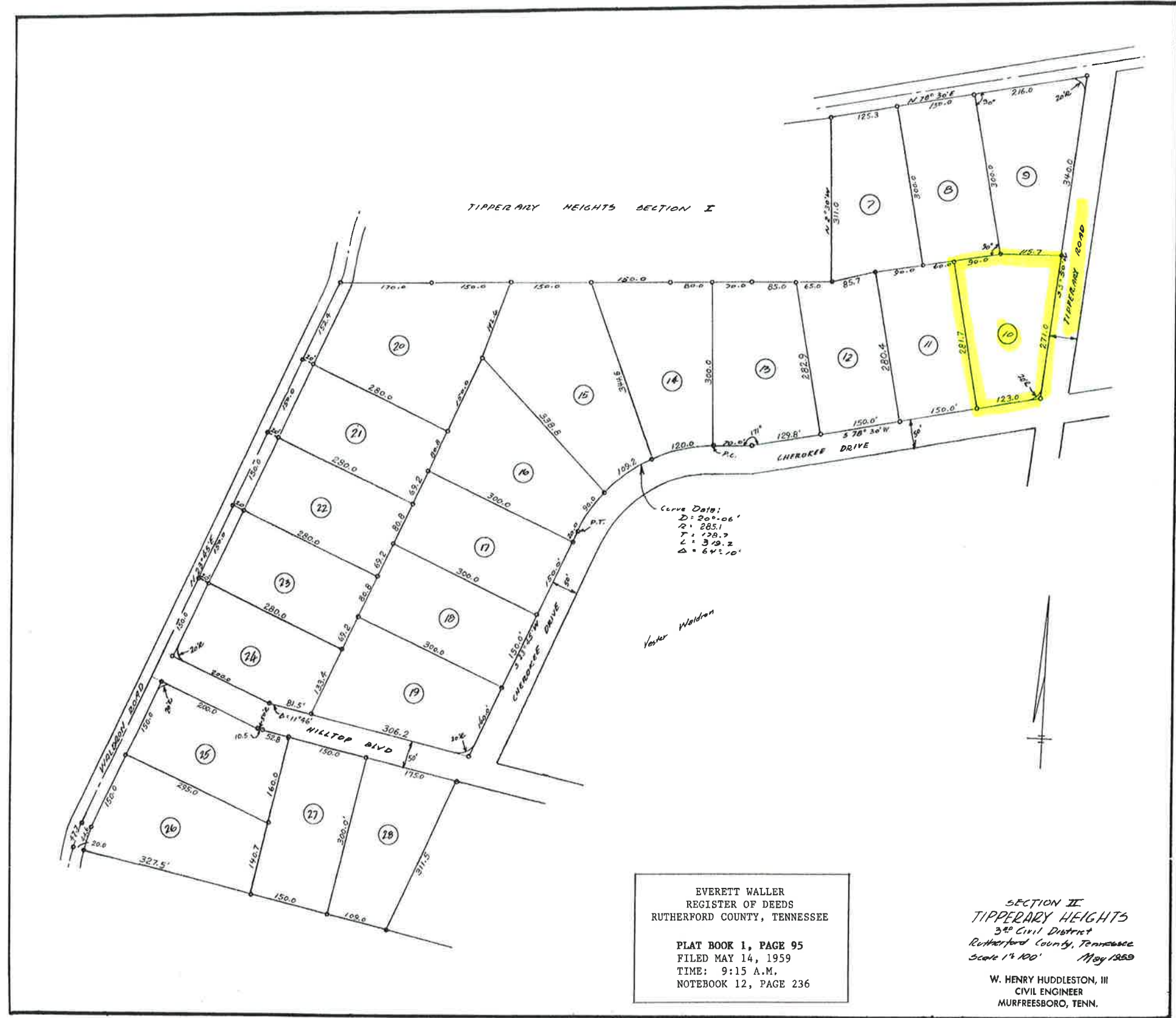


1-95

TIPPERARY HEIGHTS, SECTION II
PLAT BOOK 1 PAGE 95



EVERETT WALLER
REGISTER OF DEEDS
RUTHERFORD COUNTY, TENNESSEE

PLAT BOOK 1, PAGE 95
FILED MAY 14, 1959
TIME: 9:15 A.M.
NOTEBOOK 12, PAGE 236

SECTION II
TIPPERARY HEIGHTS
3RD Civil District
Rutherford County, Tennessee
Scale 1" = 100' May 1959

W. HENRY HUDDLESTON, III
CIVIL ENGINEER
MURFREESBORO, TENN.

Filed May 14, 1959, at 9:15 A.M.