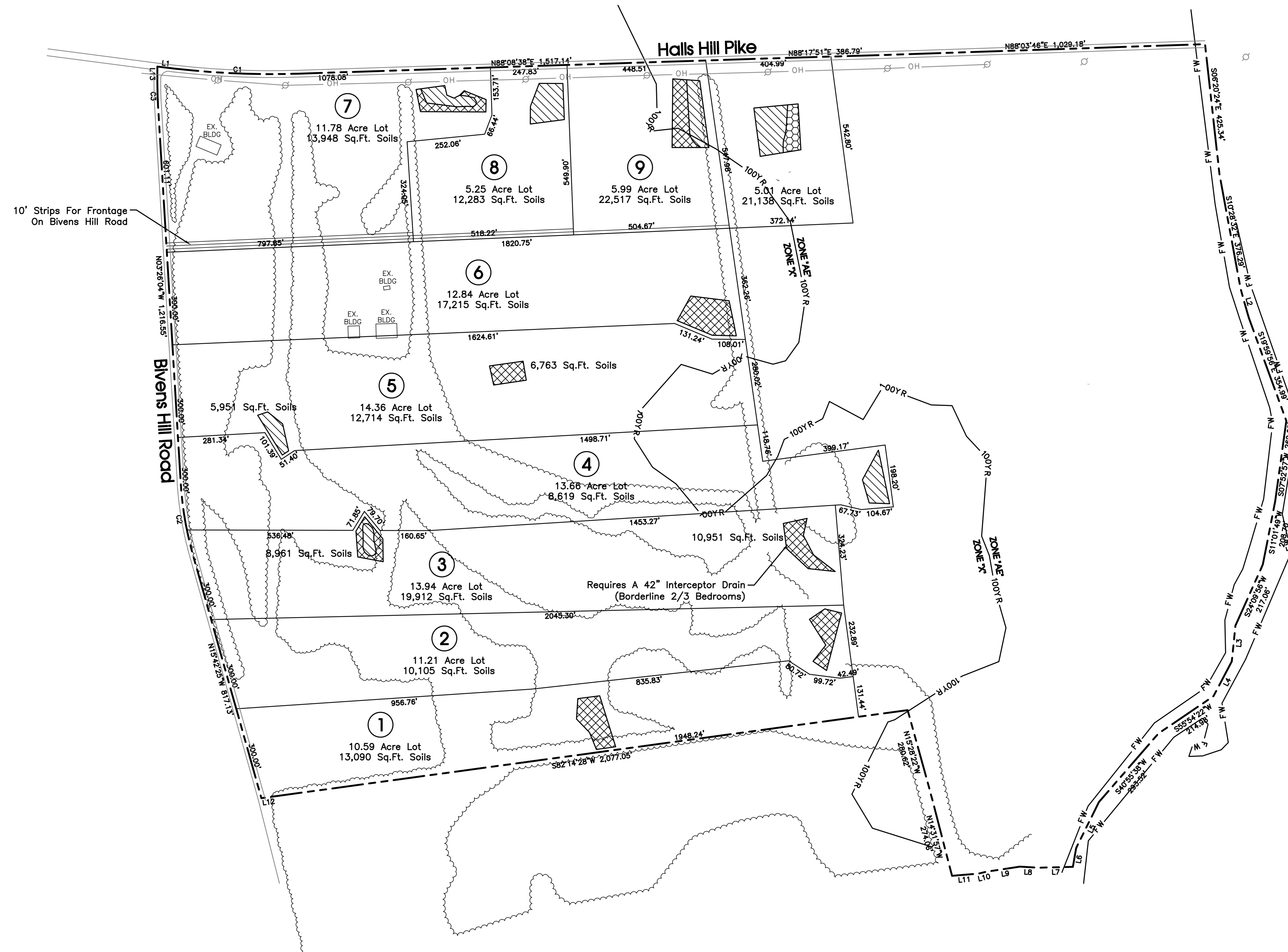


LINE	BEARING	DISTANCE
L1	S83°27'19"E	57.03'
L2	S15°50'15"E	95.39'
L3	S09°45'21"W	115.67'
L4	S27°44'12"W	127.23'
L5	S26°21'08"W	165.78'
L6	S09°43'56"W	61.86'
L7	S88°37'48"W	111.69'
L8	N86°46'16"W	59.73'
L9	S81°31'27"W	106.13'
L10	S76°26'45"W	29.00'
L11	S85°17'49"W	66.57'
L12	S82°14'28"W	31.27'
L13	N00°02'25"W	49.22'

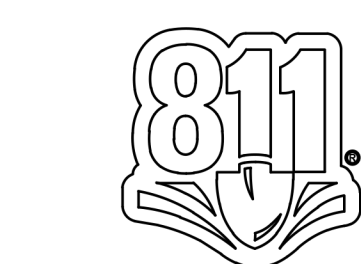
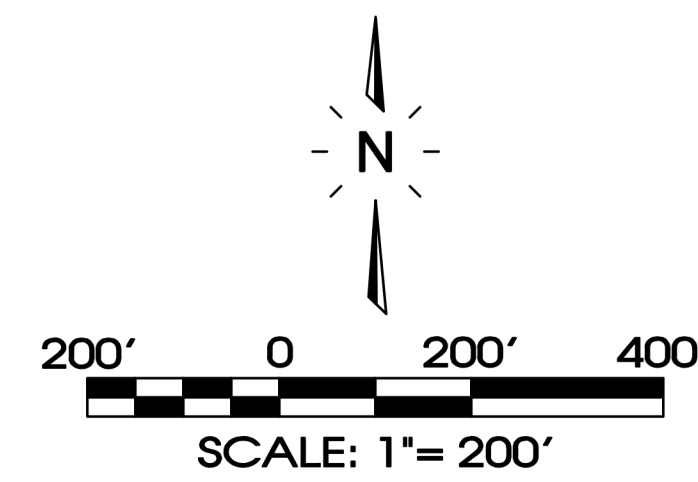
CURVE	RADIUS	ARC LENGTH	CHORD LENGTH	CHORD BEARING	DELTA ANGLE
C1	2,723.19'	399.29'	398.93'	S87°39'20"E	8°24'04"
C2	1,111.43'	239.07'	238.61'	N09°35'48"W	12°19'28"
C3	1,350.05'	79.97'	79.96'	N01°44'14"W	3°23'38"



Legend:	
	EXIST. CONCRETE MONUMENT
	IRON PIN SET (I.P.S.)
	IRON PIN FOUND (I.P.F.)
	EXIST. SIGN POST
	EXIST. SEWER CLEANOUT
	EXIST. MANHOLE (SEWER & PHONE)
	EXIST. CATCH BASIN (STORM SEWER)
	EXIST. WATER/GAS VALVE
	EXIST. TELEPHONE RISER
	EXIST. GAS RISER
	ELECTRICAL ENCLOSURE
	EXIST. WATER METER
	EXIST. UTILITY POLE
	EXIST. FIRE HYDRANT
	POST INDICATOR VALVE
	BLOW OFF VALVE
	REDUCER
	REMOTE FIRE DEPT. CONNECTION
	CONCRETE THRUST BLOCK
	DOUBLE DETECTOR CHECK VALVE
	FIRE DEPT. CONNECTION
	FIRE HYDRANT
	GATE VALVE & BOX
	WATER METER
	GAS METER
	GREASE TRAP
	EXTERIOR CLEANOUT EOC
	MANHOLE
	EXISTING PHONE
	EXISTING ELECTRIC
	PROPERTY LINE
	EASEMENTS
	RIGHT OF WAY
	EROSION CONTROL SILT FENCE
	EROSION EEL
	EXISTING TREELINE
	EXISTING FENCELINE
	MINIMUM BUILDING SETBACK LINE
	PHASE BOUNDARY
	EXISTING GAS LINE
	PROPOSED GAS LINE
	EXISTING STORM
	PROPOSED STORM
	EXISTING CONTOUR LINES
	PROPOSED CONTOUR LINES
	EXISTING SANITARY SEWER
	PROPOSED SANITARY SEWER
	EXISTING WATER
	PROPOSED WATER

**Soils Legend**

	- 45 MPI
	- 60 MPI
	- 75 MPI



Know what's below.  
Call before you dig.

**SITE ENGINEERING CONSULTANTS**  
ENGINEERING • SURVEYING • LAND PLANNING  
LANDSCAPE ARCHITECTURE  
850 MIDDLE TENNESSEE BOULEVARD MURFREESBORO, TENNESSEE 37129  
PHONE: (615) 890-7901 E-MAIL: MTAYLOR@SEC-CIVIL.COM FAX: (615) 895-2567  
NO PORTION OF THIS DRAWING MAY BE REPRODUCED WITHOUT THE EXPRESSED WRITTEN CONSENT OF S.E.C. INC.  
COPYRIGHT S.E.C. INC. 2023

**SEC, Inc.**

**Bivens Hill Road**  
Rutherford County, Tennessee

REVISIONS:  
DRAWN: PRN  
DATE: 2-16-2023  
CHECKED:  
MAT  
FILE NAME:  
BivenHillExhibit-02  
SCALE:  
1"=200'  
JOB NO.  
21464  
SHEET:  
**C1.0**