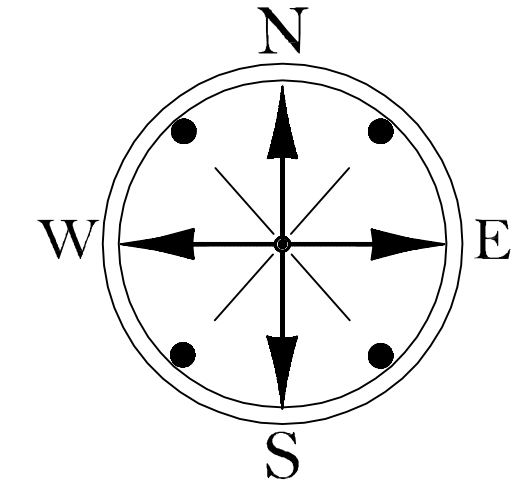


LOCATION SKETCH n.t.s.



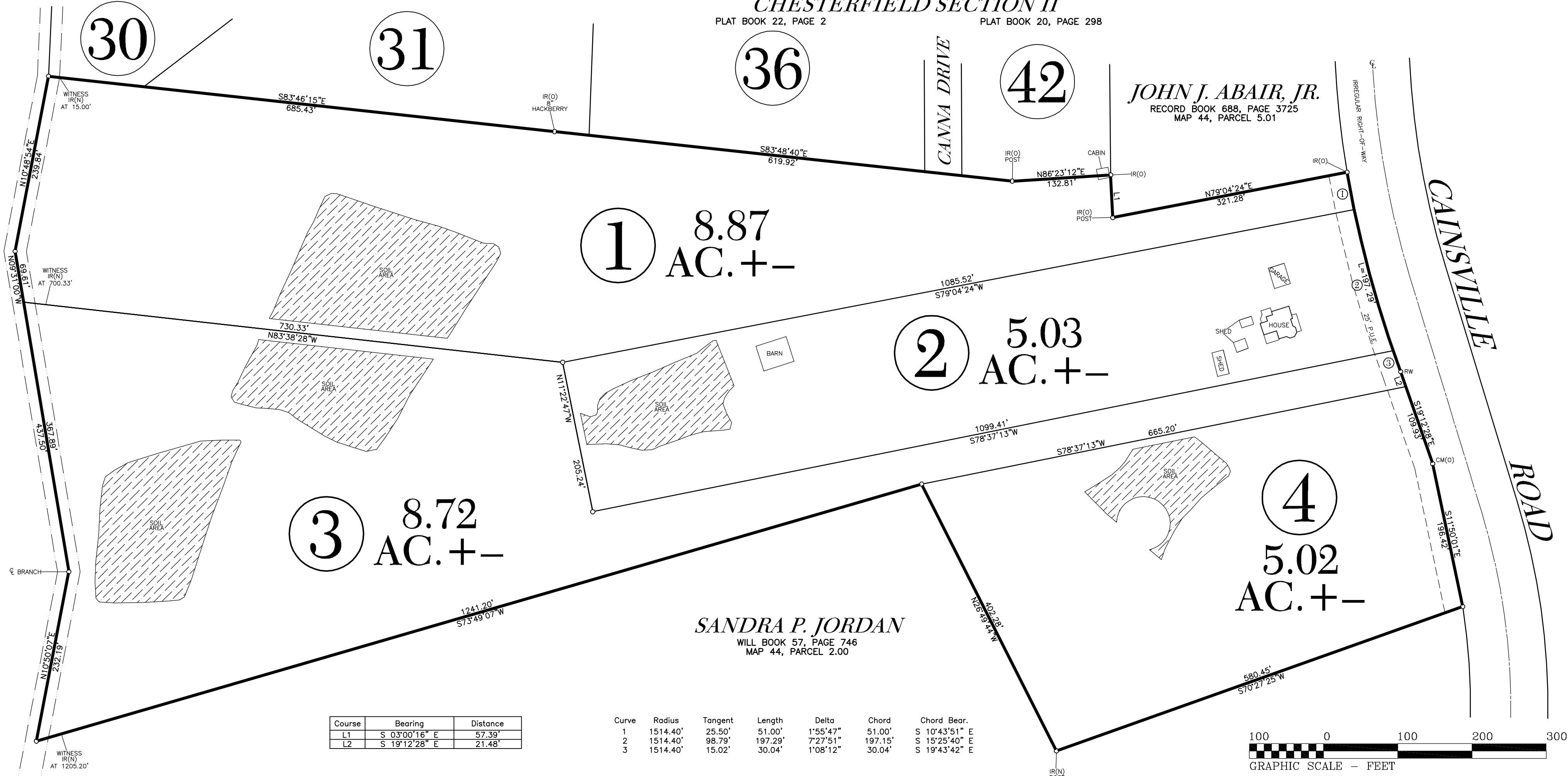
SALE EXHIBIT FOR
AUBREY ARNOLD
 AND WIFE
CHRISTENE ARNOLD
 LOCATED IN THE 22ND CIVIL DISTRICT OF RUTHERFORD COUNTY, TENNESSEE

SCALE : 1" = 100'
 DATE : JUNE 22, 2022
 SIZE : 27.64 AC.+
 DEED : D. B. 232, PG. 424, R.O.R.C.T.
 MAP : MAP 44, PAR. 3.00, T.A.O.R.C.T.



CHESTERFIELD SECTION II

PLAT BOOK 22, PAGE 2 PLAT BOOK 20, PAGE 298



Course	Bearing	Distance
L1	S 03°00'16" E	57.39'
L2	S 19°12'28" E	21.48'

Curve	Radius	Tangent	Length	Delta	Chord	Chord Bear.
1	1514.40'	25.50'	51.00'	1°55'47"	51.00'	S 10°43'51" E
2	1514.40'	98.79'	197.29'	7°27'51"	197.15'	S 15°25'40" E
3	1514.40'	15.02'	30.04'	1°08'12"	30.04'	S 19°43'42" E

