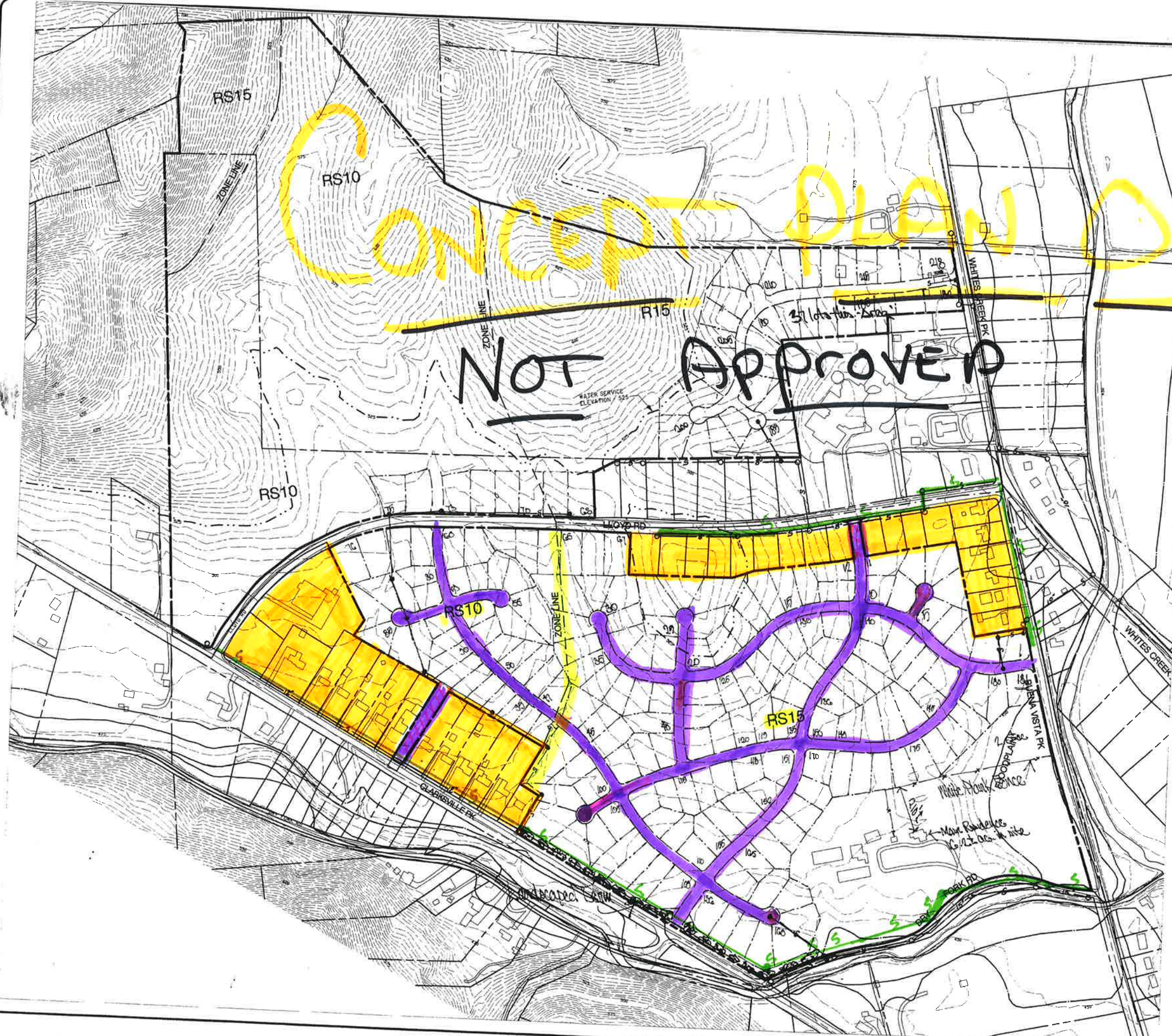


CONCEPT PLAN ONLY

NOT APPROVED

Site Data

- 1. PROPERTY MAP 49, PARCELS 42, 52, ETC.; MAP 48, PARCEL 34.01, ETC.
- 2. PRESENTLY ZONED - NORTH SIDE LLOYD ROAD - R15 & RS10 - 111 ACRES APPROX. SOUTH SIDE LLOYD ROAD - RS15 & RS10 - 101 ACRES APPROX.
- 3. -s-o-s- INDICATES EXISTING SEWER
- 4. ALL PROPOSED ROADWAYS WILL BE 46' WIDE
- 5. WATER SERVICE ELEVATION AS PER METRO WATER SERVICES - 525
- 6. TYPICAL LOTS SIZES RS15 - 80' X 190'
85' X 176'
90' X 167'
- 7. TYPICAL LOT SIZES RS10 - 75' X 133'
80' X 125'
- 8. ALL FRONTAGE LOTS ALONG LLOYD ROAD ARE A MINIMUM OF 100' WIDE.
- 9. ALL INFORMATION SHOWN HEREON TAKEN FROM METRO PROPERTY MAPPING, METRO PLANNING COMMISSION, METRO WATER & SEWER SERVICES, ETC.



A" Sketch Plan
Ole Orchard

1st COUNCILMANIC DISTRICT
 NASHVILLE, DAVIDSON COUNTY, TENNESSEE

OWNER/DEVELOPER
Country Maid Farms, Inc.
 3832 DRY FORK ROAD
 WHITES CREEK, TENNESSEE, 37155

3-10-03 1"=200'

Anderson-Delk & Associates, Inc.
 618 Grassmere Park Drive, Suite 4
 Nashville, Tennessee 37211
 (615) 331-0809