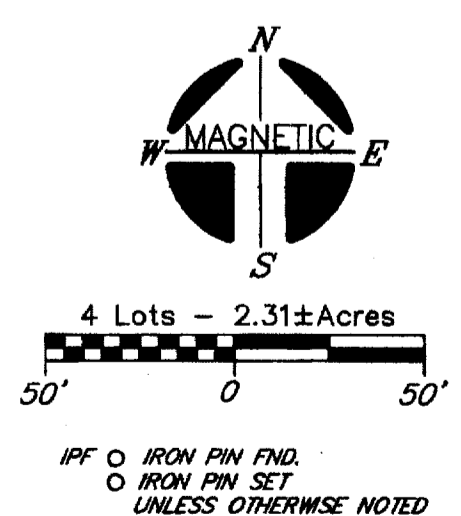
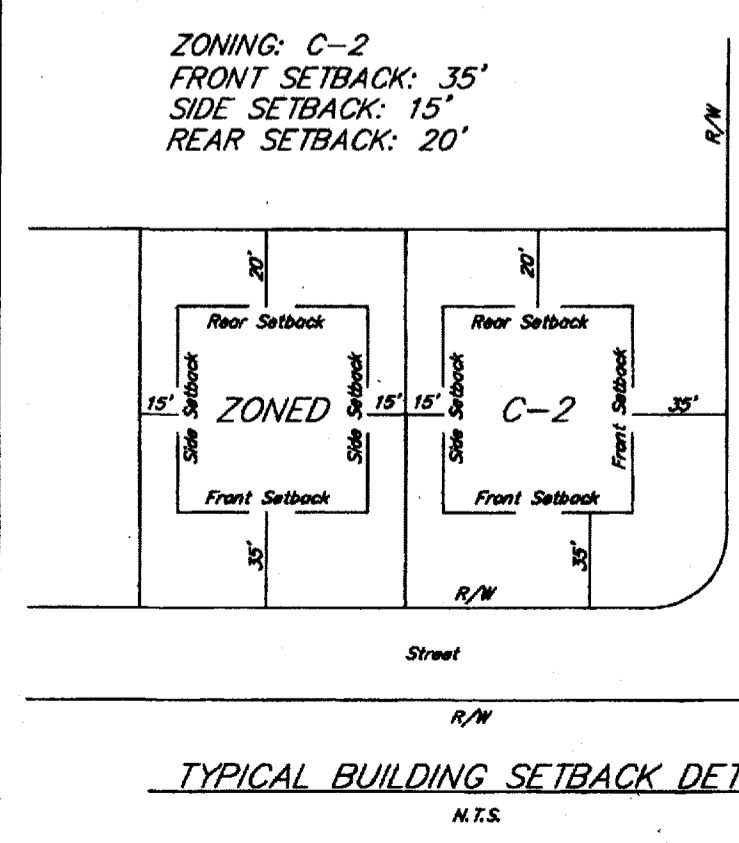
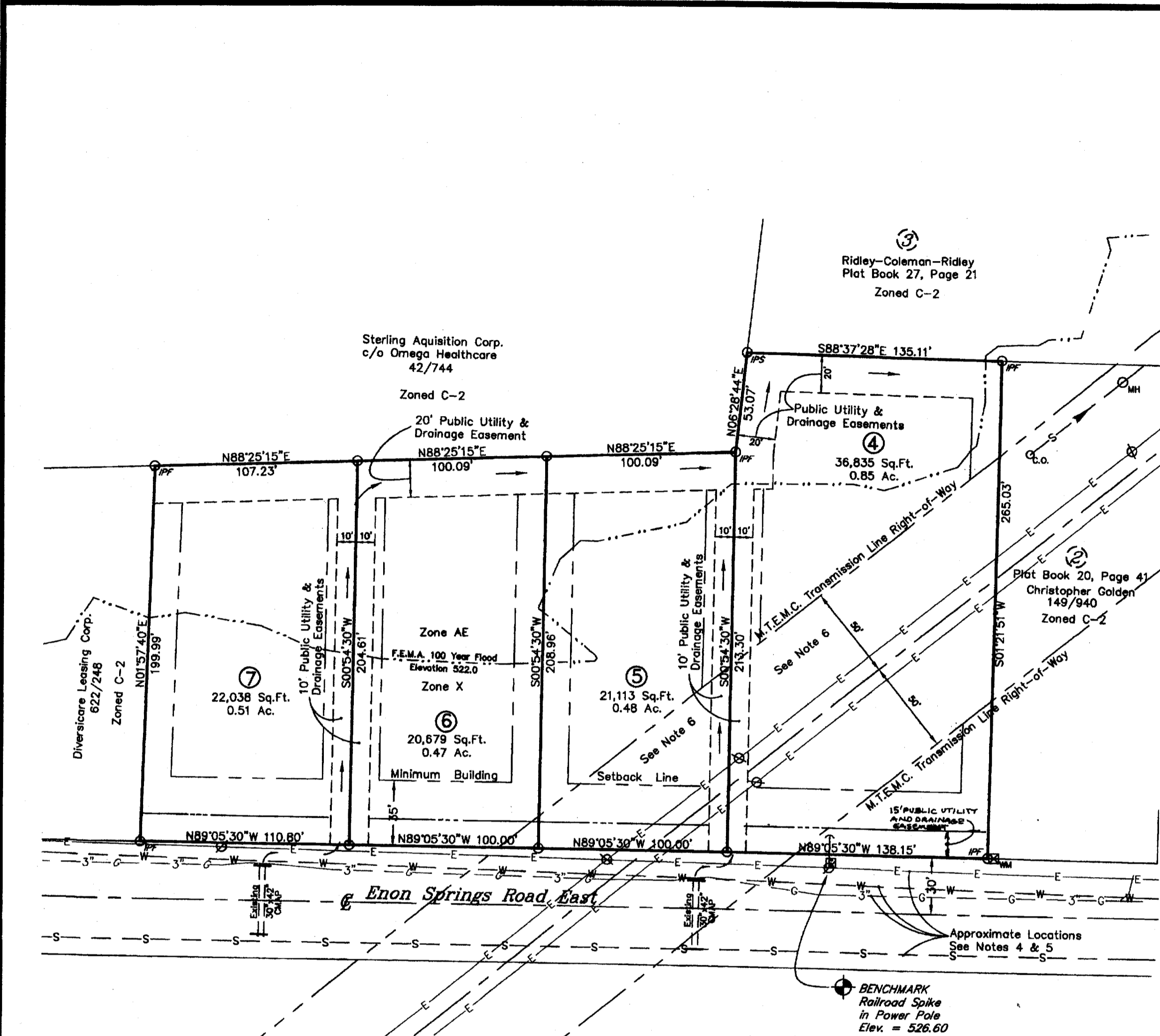


D:\Land Projects 3\Ridley on Mayfield\dwg\RidleyLot4+.dwg, Final, 1/21/2004 8:01:54 AM, ACAD009.DWG



I hereby certify that this plat has been reviewed for the Rutherford County Development Tax. No Development Tax Required. 1-26-04
 RUTHERFORD COUNTY REGIONAL PLANNING COMMISSION

OWNER: Knox Ridley et al, Kent Coleman et al
 ADDRESS: 14 Public Square Murfreesboro, TN 37130

Tax Map 27-0, Group D, Part of Parcel 8.00
 Part of Will Book 38, Page 174
 Part of Will Book 27, Page 389
 Part of Deed Book 197, Page 331

FEDERAL FLOOD NOTE
 A portion of these Lots are located in an area designated as a Special Flood Area on Community Map 470169 Panel No. 0107 E, Zones: AE & X, Dated 05-18-98.

PLAT NOTES

- It is the responsibility of each builder to design and construct a suitable grading and drainage scheme which will convey surface water, without ponding in the lot or under the house, from his structure to the drainage system constructed by the subdivision developer.
- Parcels may be subject to additional easements, and/or restrictions, by record or prescription, that a complete title search may reveal.
- Public utility and drainage easements where shown hereon are intended to indicate an easement for construction, operation, and maintenance of public utilities and drainageways; including, but not limited to, sanitary sewers, forcemains, water lines, telephone signal conduits, electric conductors, drainage pipes, and natural gas lines.
- In Tennessee, it is a requirement per "The Underground Utility Damage Prevention Act" that anyone who engages in excavation must notify all known underground utility owners, no less than three nor more than ten working days of their intent to excavate. A list of these utilities may be obtained from the County Register of Deeds. Those utilities that participate in the Tennessee One Call system can be notified by calling toll free 1-800-351-1111.
- Underground utilities shown were located using available above-ground evidence, and also from information obtained from the respective utility companies. The existence or non-existence of the utilities shown and any other utilities which may be present on this site or adjacent sites should be confirmed with the utility owner prior to commencing any work.
- No work within the Right-of-Way of Middle Tennessee Electric Membership Corporation (M.T.E.M.C.) without the prior written approval of M.T.E.M.C.

NOTE: UTILITIES SHOWN ARE AS PLANNED AND NOT NECESSARILY INSTALLED.

LEGEND

- ⊗ Power Pole
- Existing Fire Hydrant
- △ Proposed Fire Hydrant
- ◇ Reducer
- ⊕ Proposed Gate Valve
- ▲ Concrete Thrust Block
- W Existing Water Line
- Proposed Water Line
- S Existing Sanitary Sewer Line
- - - Proposed Sanitary Sewer Line
- Existing Manhole
- Proposed Manhole
- Proposed Blowoff Hydrant

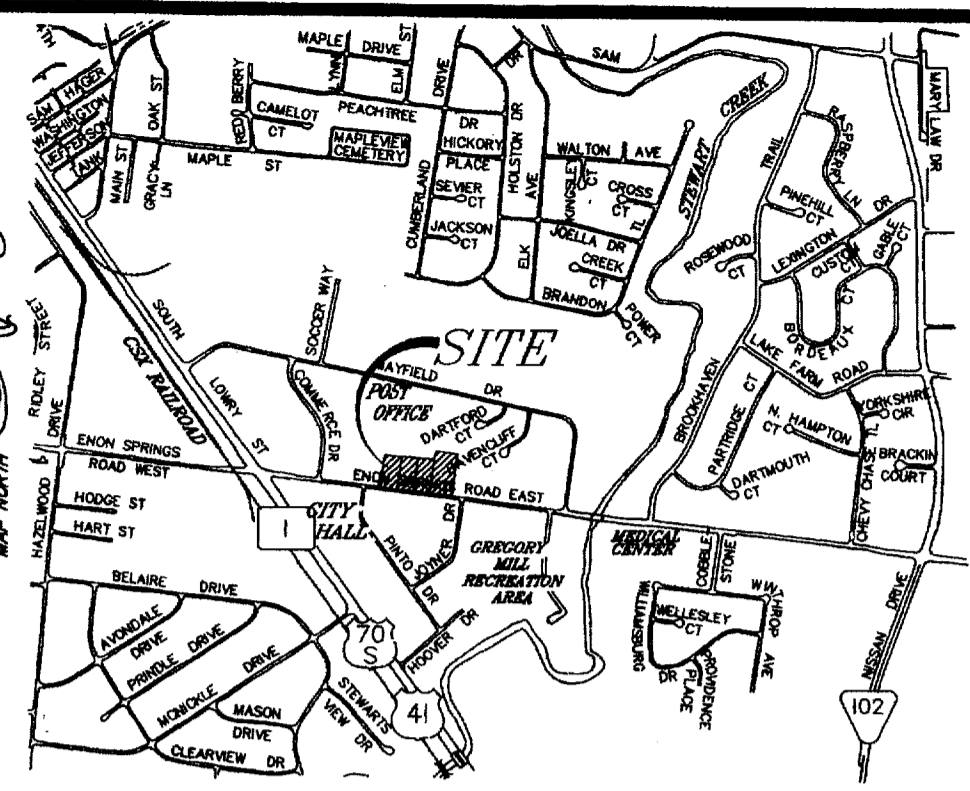
Lot No.	F.E.M.A. 100 Year Flood Elevation	Minimum Building Pod Elevation	Minimum Finish Floor Elevation
4, 5, 6, 7	522.00	523.00	525.00

Jennifer M Gerhart, Register
 Rutherford County Tennessee
 Rec #: 375699 Instrument 1250924
 Rec'd: 15.00 NBk: 73 Pg 439
 State: 0.00 Recorded
 Clerk: 0.00 1/28/2004 at 8:21 am
 EDP: 2.00 in Plat Cabinet
 Total: 17.00 27 Pages 105-105

CERTIFICATE OF THE APPROVAL OR BONDING OF ROADS

I hereby certify, (1) that all designated roads on this final plat have been installed in an acceptable manner and according to the specifications of the Smyrna Municipal Subdivision Regulations, or (2) that a surety bond has been posted with the Planning Commission to assure completion of all required improvements in case of default.

1-23 2004 V.W. Bayett
 Date CITY ENGINEER



CERTIFICATE OF OWNERSHIP AND DEDICATION

I (we) hereby certify that I am (we are) the owner(s) of the property shown and described hereon and that I (we) hereby adopt this plan of subdivision with my (our) free consent, establish the minimum building restriction lines, and that offers of irrevocable dedication for all public roads, utilities, and other facilities have been filed as required by the Smyrna Municipal Subdivision Regulations.

January 27, 2004
 Date
 W. Kent Coleman, Page 167
 Deed Book 197, Page 331
 Will Book 27, Page 389
 Will Book 38, Page 174
 W. Kent Coleman Executor of John Sam Ridley Estate
 W. Kent Coleman is Power of Attorney for Knox Ridley in Trust Book 4518, Page 248
 W. Kent Coleman and Kara Griffin are heirs to Mildred H. Spivey and Earl R. Coleman
 W. Kent Coleman is Power of Attorney for Kara Griffin in Trust Book 8233, Page 205

Richard H. Stern, Jr., RLS No. 1937
 Richard H. Stern, Jr., RLS No. 1937

CERTIFICATE OF ACCURACY

I hereby certify that the plan shown and described hereon is a true and correct survey to the accuracy required by the Smyrna Tennessee, Municipal Planning Commission and that the monuments have been or will be placed, as shown hereon to the specifications of the city engineer or his authorized representative.

1-21 2004 Richard H. Stern, Jr.
 Date Richard H. Stern, Jr., RLS No. 1937

CERTIFICATE OF APPROVAL FOR RECORDING

I hereby certify that the subdivision plat shown hereon has been found to comply with the Smyrna, Tennessee, Municipal Subdivision Regulations with the exception of such variances, if any, as are noted in the minutes of the planning commission and that it has been approved for recording in the office of the County Register.

1-23 2004 V.W. Bayett
 Date SECRETARY, PLANNING COMMISSION

CERTIFICATE OF APPROVAL OF UTILITY SYSTEMS

I hereby certify that the utility systems outlined or indicated on the final subdivision plat entitled Lots 4 thru 7, Ridley-Coleman-Ridley have been installed in accordance with current local and state government requirements, or bonds posted.

Water System & Sewer
 1-23 2004 V.W. Bayett
 Date DIRECTOR OF UTILITIES

DATE OF RECORDING: January 28, 2004
 TIME OF RECORDING: 8:21 A.M.
 PLAT BOOK: 27, PAGE: 105

RICHARD H. STEELE
 REGISTERED PROFESSIONAL ENGINEER
 AGRICULTURE
 TENNESSEE NO. 1637-4

SHUDDLESTON-STEELE
 ENGINEERING, INC.
 2115 N.W. BROAD STREET, MURFREESBORO, TN 37129
 SURVEYING: 893 - 4084, FAX: 893 - 0080

Final Plat - Lots 4 thru 7
Ridley-Coleman-Ridley
 Subdivision
 3rd Civil District of Rutherford County, Tennessee

Date: November, 2003 Scale: 1"=50' Sheet 1 of 1