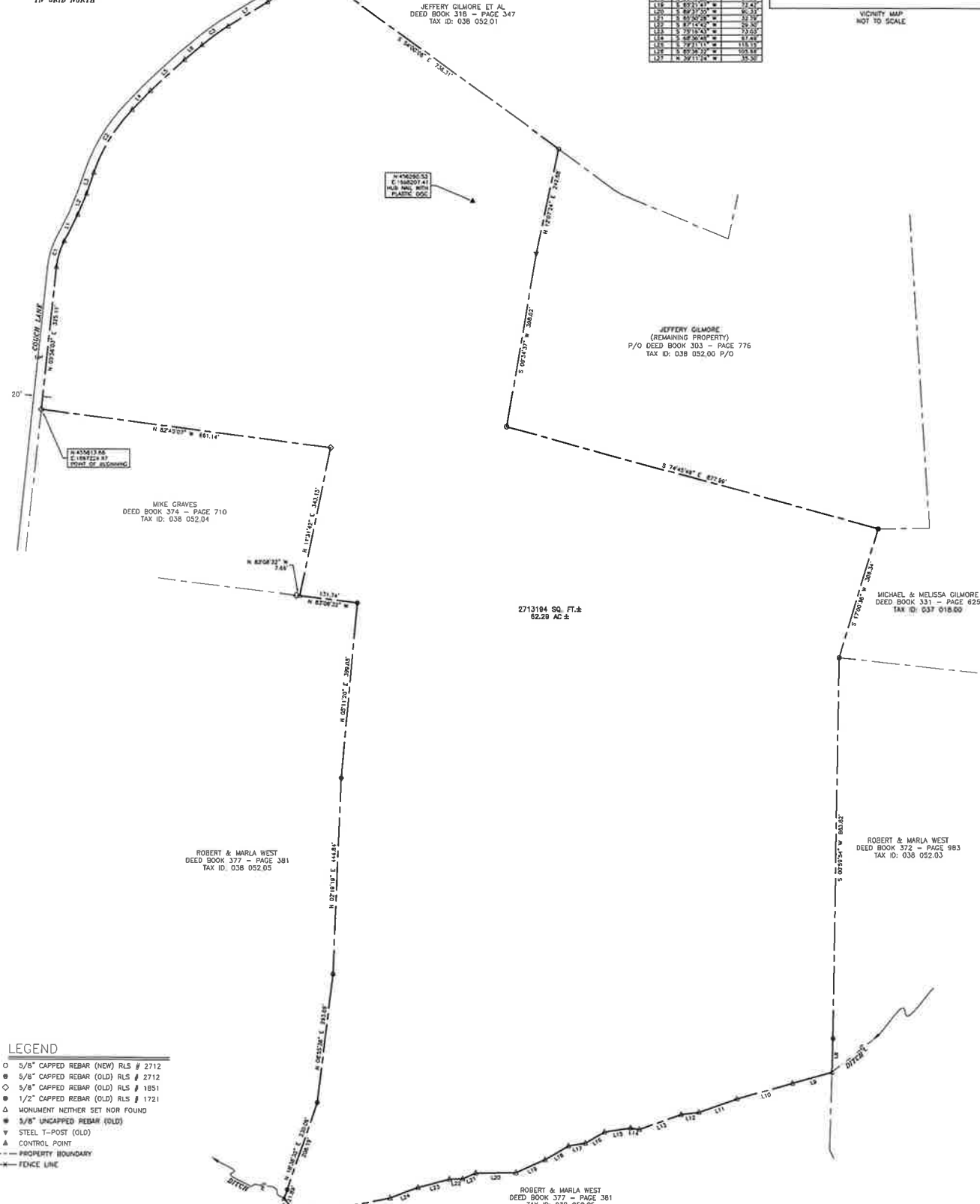
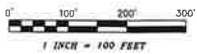


CURV	START	ARC LENGTH	CHORD LENGTH	CHORD BEARING	BEARING ANGLE
C1	132.21	132.14	132.14	N 15°17'11" E	233°17'11"
C2	201.43	188.82	187.72	N 33°06'24" E	124°40'24"
C3	132.21	132.14	132.02	N 84°37'42" E	100°00'00"
C4	132.21	132.14	132.02	N 33°10'11" E	48°27'21"

LINE	BEARING	DISTANCE
L1	N 24°10'00" W	27.40
L2	N 74°42'00" E	17.14
L3	N 18°42'00" E	52.80
L4	N 47°14'45" E	39.80
L5	N 47°14'45" E	103.00
L6	N 20°12'00" E	115.40
L7	N 30°12'00" E	125.40
L8	N 30°12'00" E	125.40
L9	N 30°12'00" E	125.40
L10	N 30°12'00" E	125.40
L11	N 30°12'00" E	125.40
L12	N 30°12'00" E	125.40
L13	N 30°12'00" E	125.40
L14	N 30°12'00" E	125.40
L15	N 30°12'00" E	125.40
L16	N 30°12'00" E	125.40
L17	N 30°12'00" E	125.40
L18	N 30°12'00" E	125.40
L19	N 30°12'00" E	125.40
L20	N 30°12'00" E	125.40
L21	N 30°12'00" E	125.40
L22	N 30°12'00" E	125.40
L23	N 30°12'00" E	125.40
L24	N 30°12'00" E	125.40
L25	N 30°12'00" E	125.40
L26	N 30°12'00" E	125.40
L27	N 30°12'00" E	125.40
L28	N 30°12'00" E	125.40
L29	N 30°12'00" E	125.40
L30	N 30°12'00" E	125.40
L31	N 30°12'00" E	125.40
L32	N 30°12'00" E	125.40
L33	N 30°12'00" E	125.40
L34	N 30°12'00" E	125.40
L35	N 30°12'00" E	125.40
L36	N 30°12'00" E	125.40
L37	N 30°12'00" E	125.40
L38	N 30°12'00" E	125.40
L39	N 30°12'00" E	125.40
L40	N 30°12'00" E	125.40
L41	N 30°12'00" E	125.40
L42	N 30°12'00" E	125.40
L43	N 30°12'00" E	125.40
L44	N 30°12'00" E	125.40
L45	N 30°12'00" E	125.40
L46	N 30°12'00" E	125.40
L47	N 30°12'00" E	125.40
L48	N 30°12'00" E	125.40
L49	N 30°12'00" E	125.40
L50	N 30°12'00" E	125.40
L51	N 30°12'00" E	125.40
L52	N 30°12'00" E	125.40
L53	N 30°12'00" E	125.40
L54	N 30°12'00" E	125.40
L55	N 30°12'00" E	125.40
L56	N 30°12'00" E	125.40
L57	N 30°12'00" E	125.40
L58	N 30°12'00" E	125.40
L59	N 30°12'00" E	125.40
L60	N 30°12'00" E	125.40
L61	N 30°12'00" E	125.40
L62	N 30°12'00" E	125.40
L63	N 30°12'00" E	125.40
L64	N 30°12'00" E	125.40
L65	N 30°12'00" E	125.40
L66	N 30°12'00" E	125.40
L67	N 30°12'00" E	125.40
L68	N 30°12'00" E	125.40
L69	N 30°12'00" E	125.40
L70	N 30°12'00" E	125.40
L71	N 30°12'00" E	125.40
L72	N 30°12'00" E	125.40
L73	N 30°12'00" E	125.40
L74	N 30°12'00" E	125.40
L75	N 30°12'00" E	125.40
L76	N 30°12'00" E	125.40
L77	N 30°12'00" E	125.40
L78	N 30°12'00" E	125.40
L79	N 30°12'00" E	125.40
L80	N 30°12'00" E	125.40
L81	N 30°12'00" E	125.40
L82	N 30°12'00" E	125.40
L83	N 30°12'00" E	125.40
L84	N 30°12'00" E	125.40
L85	N 30°12'00" E	125.40
L86	N 30°12'00" E	125.40
L87	N 30°12'00" E	125.40
L88	N 30°12'00" E	125.40
L89	N 30°12'00" E	125.40
L90	N 30°12'00" E	125.40
L91	N 30°12'00" E	125.40
L92	N 30°12'00" E	125.40
L93	N 30°12'00" E	125.40
L94	N 30°12'00" E	125.40
L95	N 30°12'00" E	125.40
L96	N 30°12'00" E	125.40
L97	N 30°12'00" E	125.40
L98	N 30°12'00" E	125.40
L99	N 30°12'00" E	125.40
L100	N 30°12'00" E	125.40



- LEGEND**
- 5/8" CAPPED REBAR (NEW) RLS # 2712
  - 5/8" CAPPED REBAR (OLD) RLS # 2712
  - ◇ 5/8" CAPPED REBAR (OLD) RLS # 1851
  - ◐ 1/2" CAPPED REBAR (OLD) RLS # 1721
  - △ MONUMENT NEITHER SET NOR FOUND
  - 5/8" UNCAPPED REBAR (OLD)
  - ▽ STEEL T-POST (OLD)
  - ▲ CONTROL POINT
  - - - PROPERTY BOUNDARY
  - - - FENCE LINE



NOTE: This survey was performed with RTK GPS positional data observed on the date of 8-14-24 using a Topcon HiPer HR dual frequency receiver. The grid coordinates of the control point shown were derived using a network of CORS stations projected to the SPCS83 datum, NAD 83, Geoid ContinentalUS\_NGSD2018. The positional accuracy of the GPS vectors is stated as ± 5 mm + 0.5 ppm. The design scale factor used for this survey is 1.00002029 centered upon the control point shown herein.



**SURVEYOR'S CERTIFICATE**  
 I hereby certify, to the best of my knowledge and belief, that the survey shown hereon represents a Category IV Survey and is in compliance with the current Tennessee Minimum Standards of Practice.  
 Date: \_\_\_\_\_ Registered Land Surveyor

Jeffrey Gilmore		
DRAWN BY	DATE	County
JAG	8/14/24	Bedford County, TN 37020
DB 303 - PG 376 P/O		Bedford County
038 652.00 P/O		4th Civil District
SCALE	ACRAGE	PROJECT NO.
1" = 100'	82.28 AC.±	24222