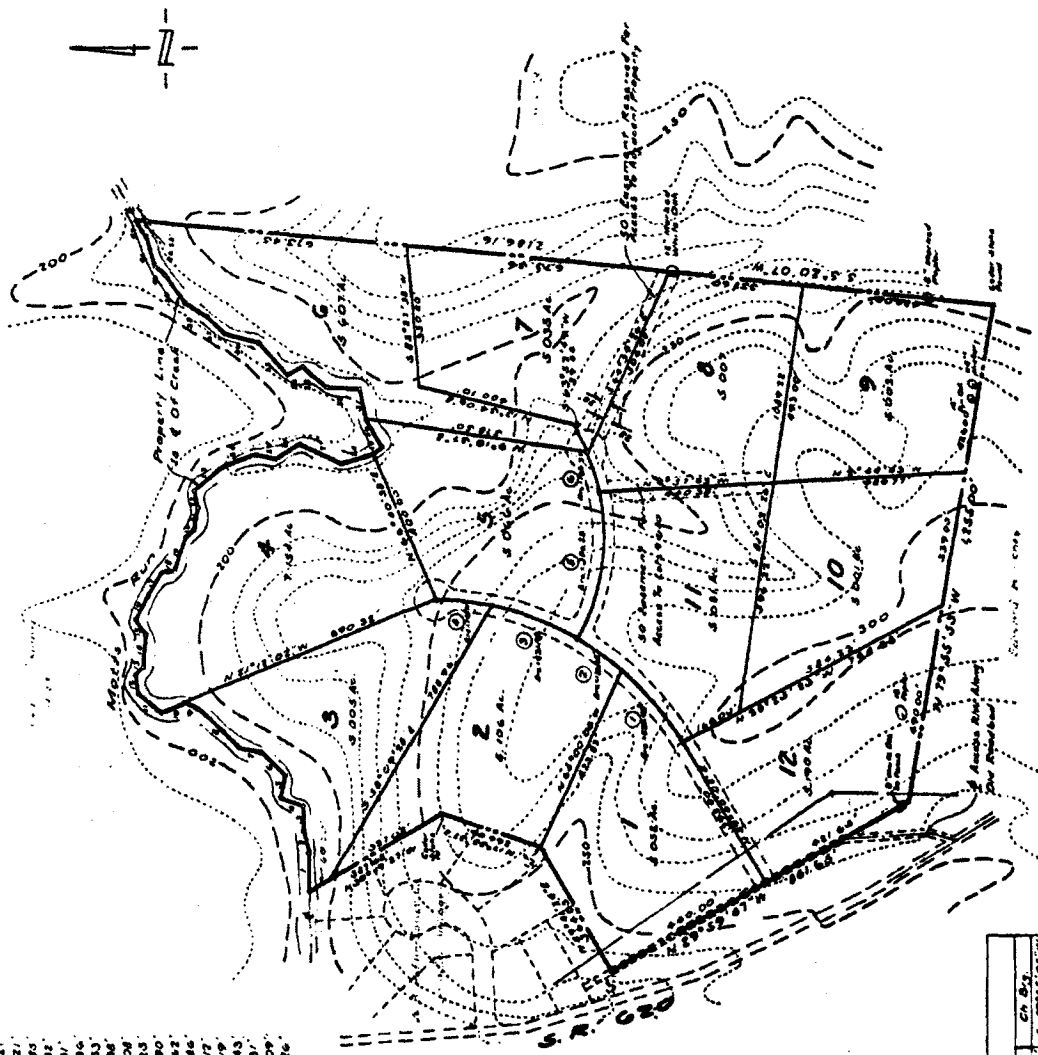


Marks & Boundaries Along & Marks Run

1	N 88°30'36"E	80.99'	22	N 63°04'34"E	48.80'
2	N 78°58'37"E	37.00'	23	S 39°33'19"E	94.86'
3	S 89°07'03"E	48.66'	24	S 15°23'16"E	90.21'
4	N 10°43'54"E	60.08'	25	S 9°53'17"W	47.21'
5	S 83°34'36"E	49.77'	26	S 34°01'09"E	73.65'
6	N 64°38'14"E	64.49'	27	S 23°59'13"W	117.32'
7	N 15°30'09"E	45.77'	28	S 12°39'30"E	68.31'
8	N 47°16'45"E	42.64'	29	S 10°15'34"E	24.96'
9	N 18°57'37"E	36.04'	30	N 68°15'54"E	84.33'
10	N 24°03'40"W	60.73'	31	N 62°19'25"E	79.86'
11	N 50°58'45"E	76.30'	32	N 4°11'07"E	90.08'
12	N 78°39'45"E	47.63'	33	N 39°43'20"E	74.83'
13	S 49°52'49"E	26.75'	34	N 27°29'42"W	43.90'
14	S 80°57'10"E	79.22'	35	N 48°24'17"E	108.82'
15	N 67°43'33"E	47.80'	36	N 14°46'57"E	86.86'
16	S 39°04'20"E	43.30'	37	N 43°03'38"E	67.12'
17	S 67°47'27"E	64.22'	38	N 25°07'40"E	67.79'
18	S 18°11'59"E	30.36'	39	N 53°19'07"E	83.45'
19	S 70°54'30"E	91.41'	40	N 39°08'28"E	27.31'
20	S 38°58'37"E	28.20'	41	N 70°29'54"E	83.09'
21	S 64°07'03"E	52.99'	42	N 67°15'15"E	49.26'



NOTE:  
Iron Pins Marking Lot Corners  
Along Marks Run Set On Lot  
Line 40' From The Center  
Of Stream.

**PLAT OF CHAPEL HEIGHTS  
PROPERTY OF COMBINED INVESTORS**

CHANCELLOR DISTRICT  
SPOTSYLVANIA COUNTY, VIRGINIA  
SCALE 1" = 200'

PREPARED BY  
FRANK R. CORDIN  
4812 COURTHOUSE ROAD  
FREDERICKSBURG, VIRGINIA 22401



CURVE DATA

No.	Radius	Ch. Data	Tan.	Arc	Chord	Ch. Bcs.
1	128.41'	18°30'00"	120.26'	238.45'	231.39'	S 49°45'04"W
2	128.41'	10°35'17"	62.39'	136.34'	136.79'	S 33°12'34"W
3	128.41'	18°00'00"	116.85'	237.94'	231.03'	S 20°55'15"W
4	128.41'	17°00'00"	71.10'	147.77'	147.53'	S 6°25'12"W
5	525.60'	61°30'07"	198.91'	380.28'	378.02'	S 80°49'10"E
6	525.60'	17°15'00"	51.64'	103.37'	103.10'	N 79°20'17"E

359 239