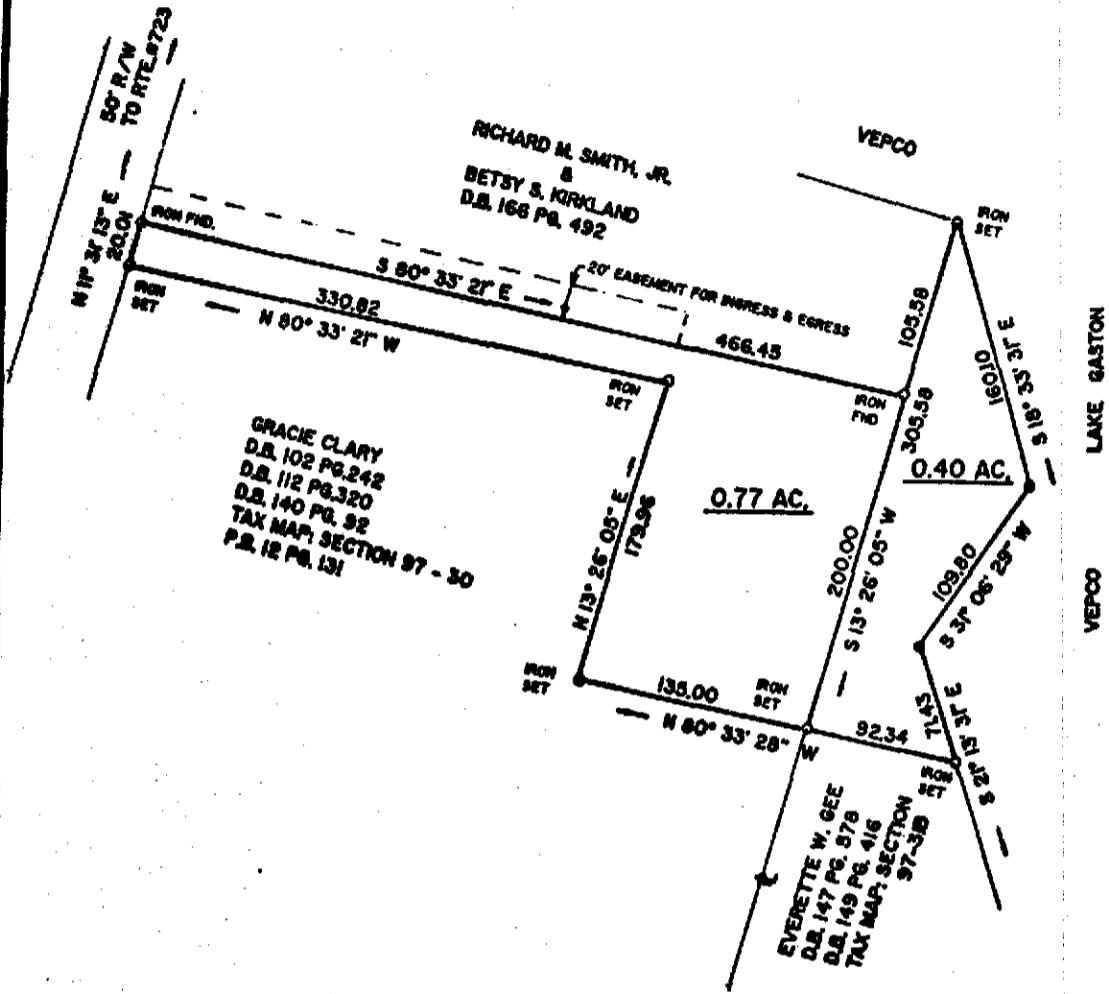


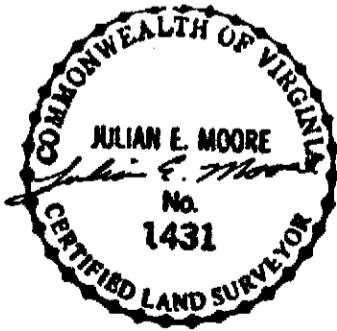
I HEREBY CERTIFY THAT THIS BOUNDARY SURVEY, TO THE BEST OF MY KNOWLEDGE AND BELIEF IS CORRECT AND COMPLIES WITH THE MINIMUM PROCEDURES AND STANDARDS ESTABLISHED BY THE VIRGINIA STATE BOARD OF ARCHITECTS, PROFESSIONAL ENGINEERS, LAND SURVEYORS, AND CERTIFIED LANDSCAPE ARCHITECTS.

Julian E. Moore



**PLAT OF TWO PARCELS OF LAND, SITUATED IN
MEHERRIN MAGISTERIAL DISTRICT
BRUNSWICK COUNTY, VIRGINIA**

0.77 AC. NOW BELONG TO: GRACIE CLARY
0.40 AC. NOW BELONG TO: EVERETTE W. GEE



DATE: FEB: 16, 1994

JULIAN E. MOORE, INC.
LAND SURVEYOR
LAWRENCEVILLE, VIRGINIA 23868

SCALE: 1" = 100'
FILE: S - 999