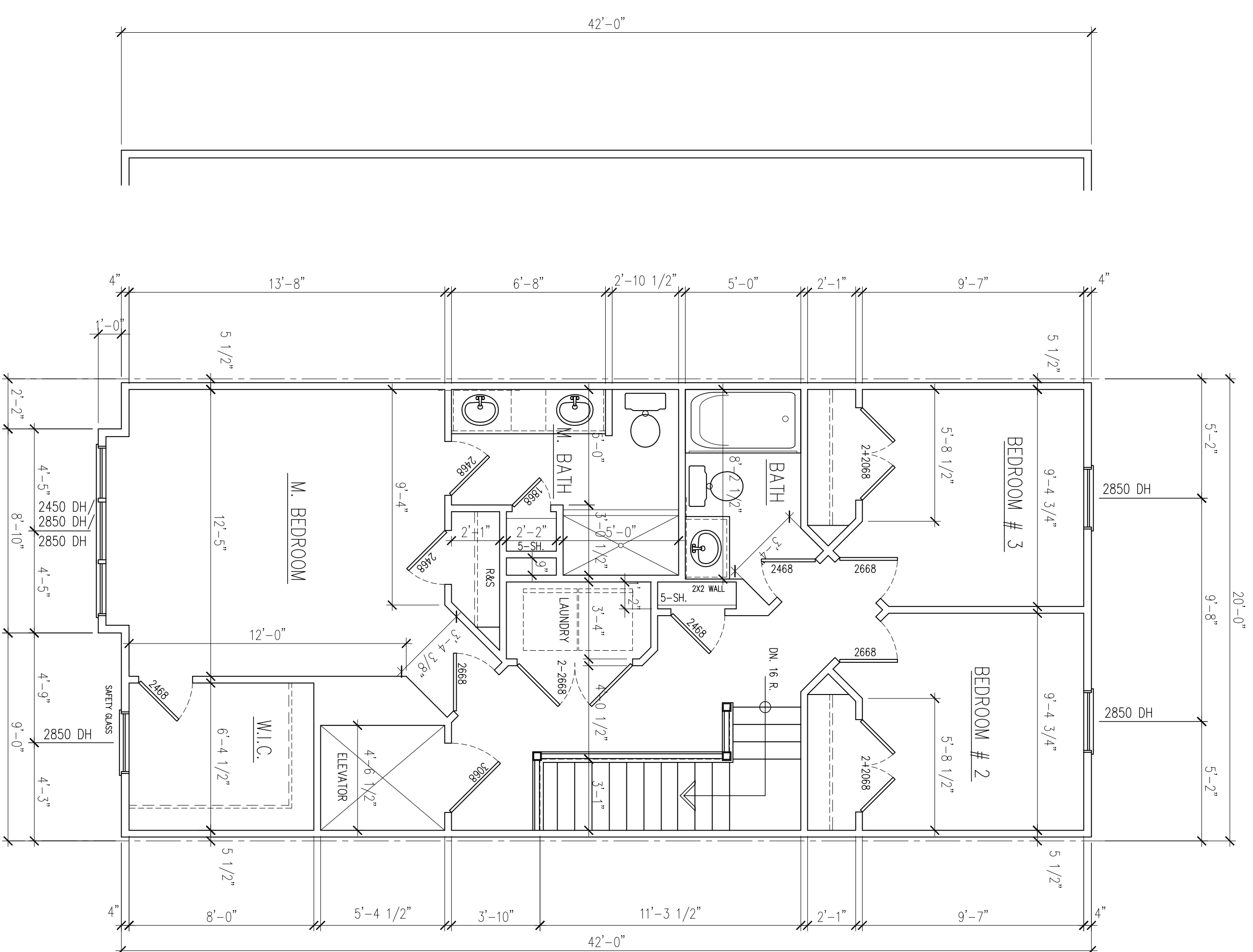


UNIT D - LIVING LEVEL
763 SQ. FT. 1/4" = 1'-0"



UNIT D - SLEEPING LEVEL
763 SQ. FT. 1/4" = 1'-0"

SQUARE FOOTAGE

LOWER LEVEL = 410 SQ. FT.
LIVING LEVEL = 763 SQ. FT.
SLEEPING LEVEL = 763 SQ. FT.
OUTDOOR LEVEL = 166 SQ. FT.
TOTAL FINISH = 2102 SQ. FT.

NOTE :

THE DRAWING IS AN INSTRUMENT OF SERVICE AND SHALL REMAIN THE PROPERTY OF CL STEADY HOMES LLC. IT SHALL NOT BE MODIFIED OR REPRODUCED IN ANY MANNER WITHOUT THE WRITTEN PERMISSION OF CL STEADY LLC

LEFT & RIGHT ELEVATION



DRAWN: []
CHECKED: []
DATE: 09/21/20
SHEET: A-2