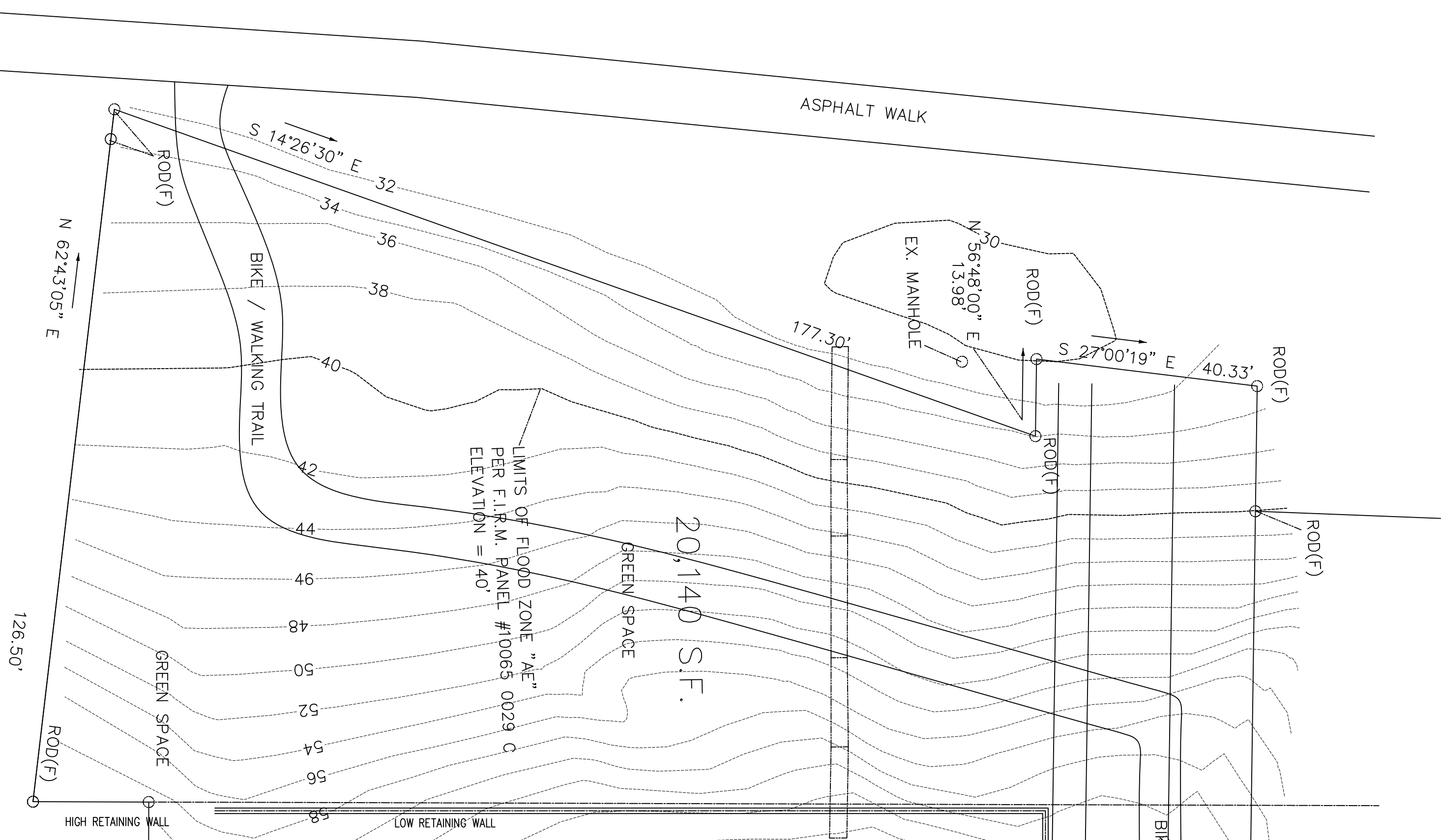


CAROLINE STREET
VARIABLE WIDTH R/W

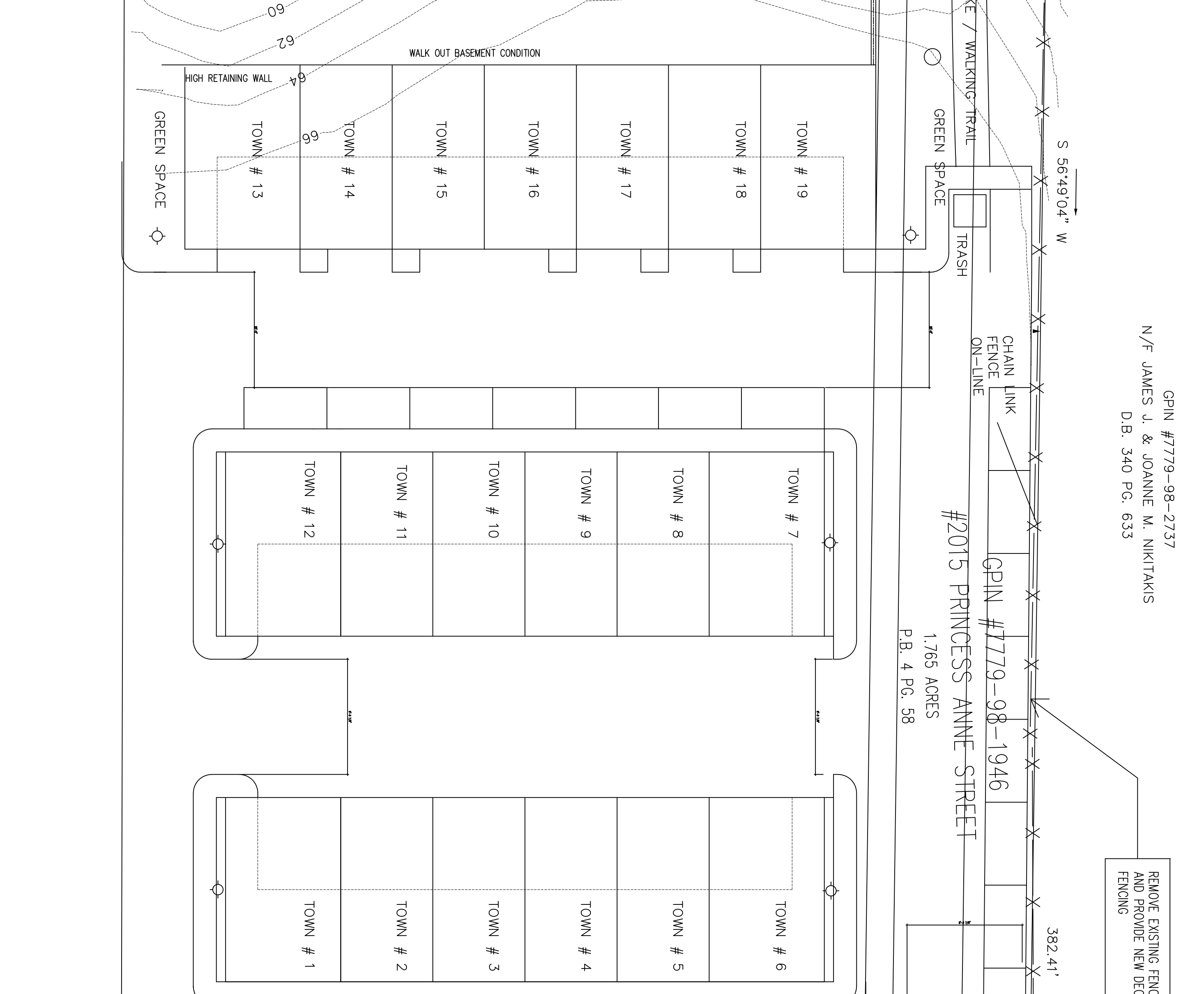
ASPHALT WALK



GPIN #7779-98-2737
N/F JAMES J. & JOANNE M. NIKITAKIS
D.B. 340 PG. 633

REMOVE EXISTING FENCING
AND PROVIDE NEW DECORATIVE FENCING

GPIN #7779-98-1946
#2015 PRINCESS ANNE STREET
1.765 ACRES
P.B. 4 PG. 58



HUNTER STREET

PRELIMINARY SITE PLAN

NO SCALE

PRINCESS ANNE STREET
VARIABLE WIDTH R/W

ADDITIONAL PARKING AREA
(IN NEGOTIATIONS WITH
ANIMAL HOSPITAL) WITH
EASEMENT OR BOUNDARY
LINE ADJUSTMENT

36'-0" BUILDING SET BACK

36'-0" BUILDING SET BACK

