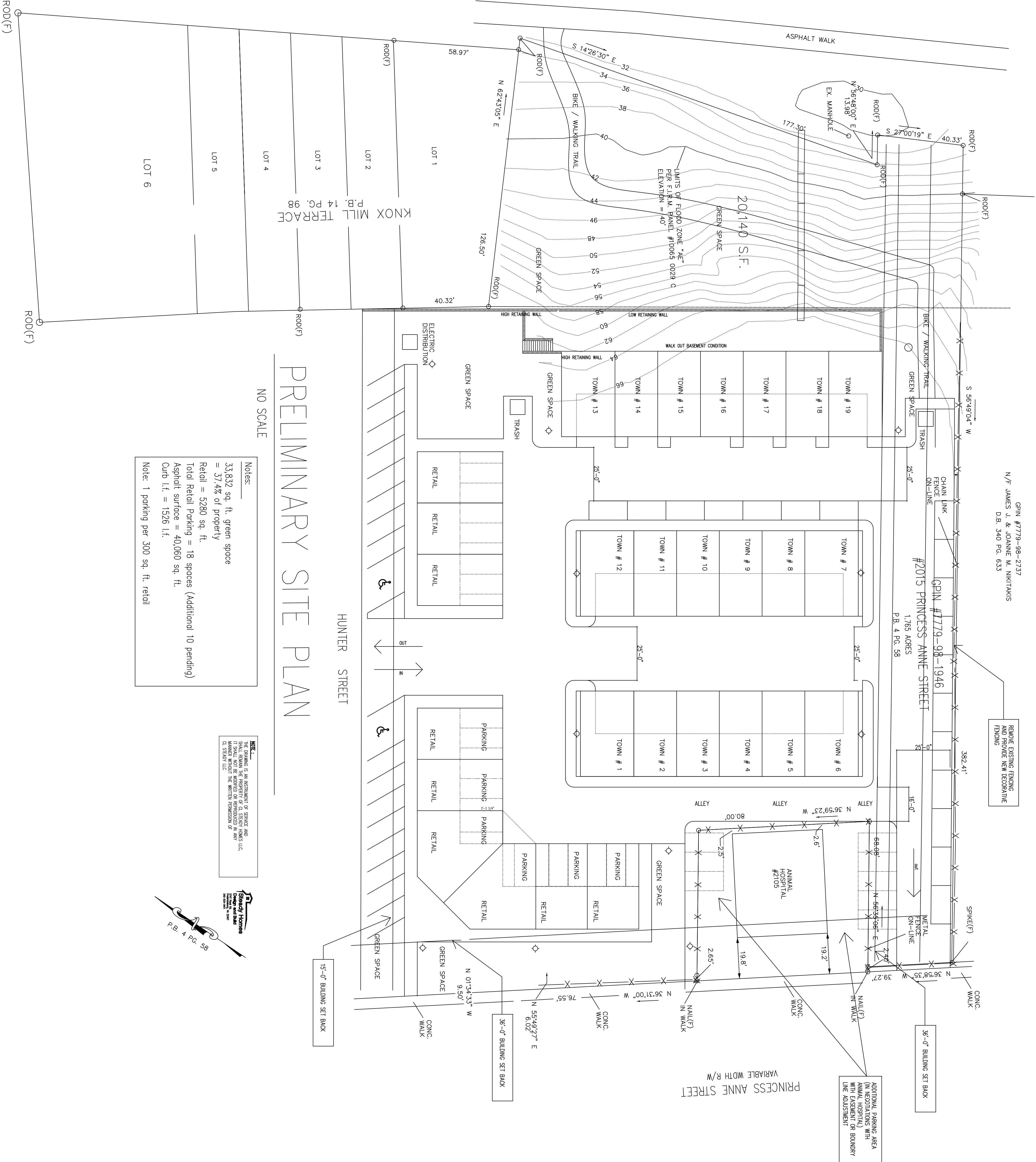


GPIN #779-98-2737
 N/F JAMES J. & JOANNE M. NIKITAKIS
 D.B. 340 PG. 633

REMOVE EXISTING FENCING AND PROVIDE NEW DECORATIVE FENCING

CAROLINE STREET
 VARIABLE WIDTH R/W

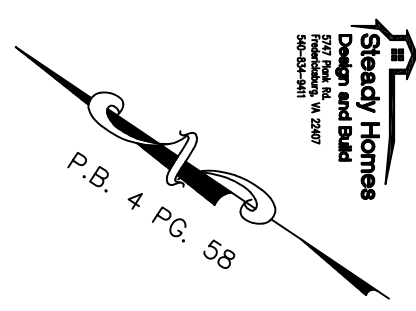


PRELIMINARY SITE PLAN

NO SCALE

Notes: —
 33,832 sq. ft. green space
 = 37.4% of property
 Retail = 5280 sq. ft.
 Total Retail Parking = 18 spaces (Additional 10 pending)
 Asphalt surface = 40,060 sq. ft.
 Curb l.f. = 1526 l.f.
 Note: 1 parking per 300 sq. ft. retail

THE DRAWING IS AN INSTRUMENT OF SERVICE AND IT SHALL NOT BE REPRODUCED OR TRANSMITTED IN ANY FORM OR BY ANY MEANS WITHOUT THE WRITTEN PERMISSION OF THE DESIGNER.



ADDITIONAL PARKING AREA (IN NEGOTIATIONS WITH ANIMAL HOSPITAL) ON BOUNDARY LINE ADJACENT

PRINCESS ANNE STREET
 VARIABLE WIDTH R/W

15'-0" BUILDING SET BACK

35'-0" BUILDING SET BACK

35'-0" BUILDING SET BACK