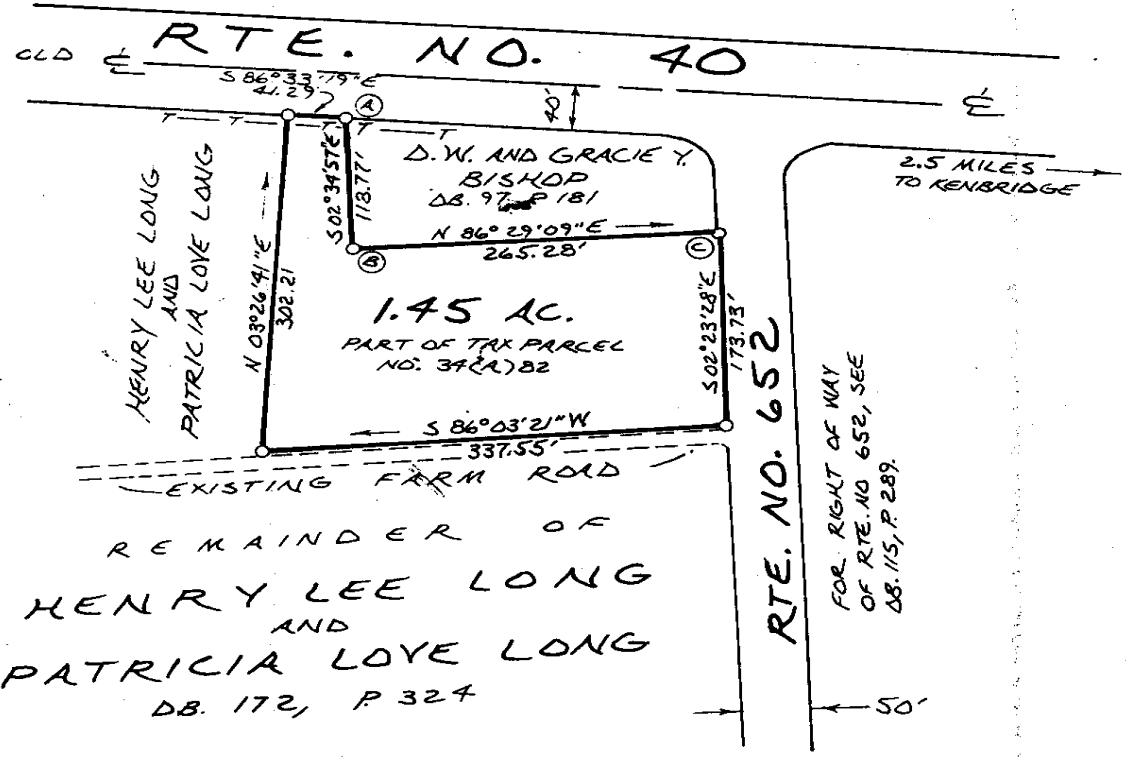


MARSHALL MORTGAGE
JUNE 1989

FOR RIGHT OF WAY OF RTE. NO. 40,
SEE DB. 106, P. 170, AND HWY. PS. 2, P. 161.



REMAINDER OF
HENRY LEE LONG
AND
PATRICIA LOVE LONG
DB. 172, P. 324

THIS PLAT WAS MADE WITHOUT
A TITLE SEARCH AND MAY NOT
SHOW ALL EASEMENTS, RIGHT-
OF-WAYS, OR OTHER ENCUMBRANCES
UPON THE LAND.

NO GROUND EVIDENCE WAS FOUND FOR THE
LINES FROM (A) TO (B) TO (C). THESE LINES
WERE SHOWN TO US BY DARRELL BISHOP.

" O " INDICATES REINFORCING ROD SET.

PLAT SHOWING 1.45 ACRES CUT OFF
THE HENRY LEE LONG AND PATRICA
LOVE LONG PROPERTY (DB. 172, P. 324)
LOCATED 2 1/2 MILES WEST OF KEN-
BRIDGE IN BROWNS STORE MAGISTERIAL
DISTRICT, LUNENBURG COUNTY,
VIRGINIA.
SURVEYED FOR DARRELL AND GRACIE BISHOP

SCALE: 1" = 100'

THIS PLAT IS BASED ON A FIELD SURVEY COMPLETED JUNE 19, 1989.



for deed of Henry Lee Long, et ux
to Darrell W. Bishop, et ux
see Deed Book 184 page 374.

J. RICHARD DUNN
SURVEYING AND FORESTRY
P. O. BOX 783
KENBRIDGE, VA. 23944
(804) 676-3623