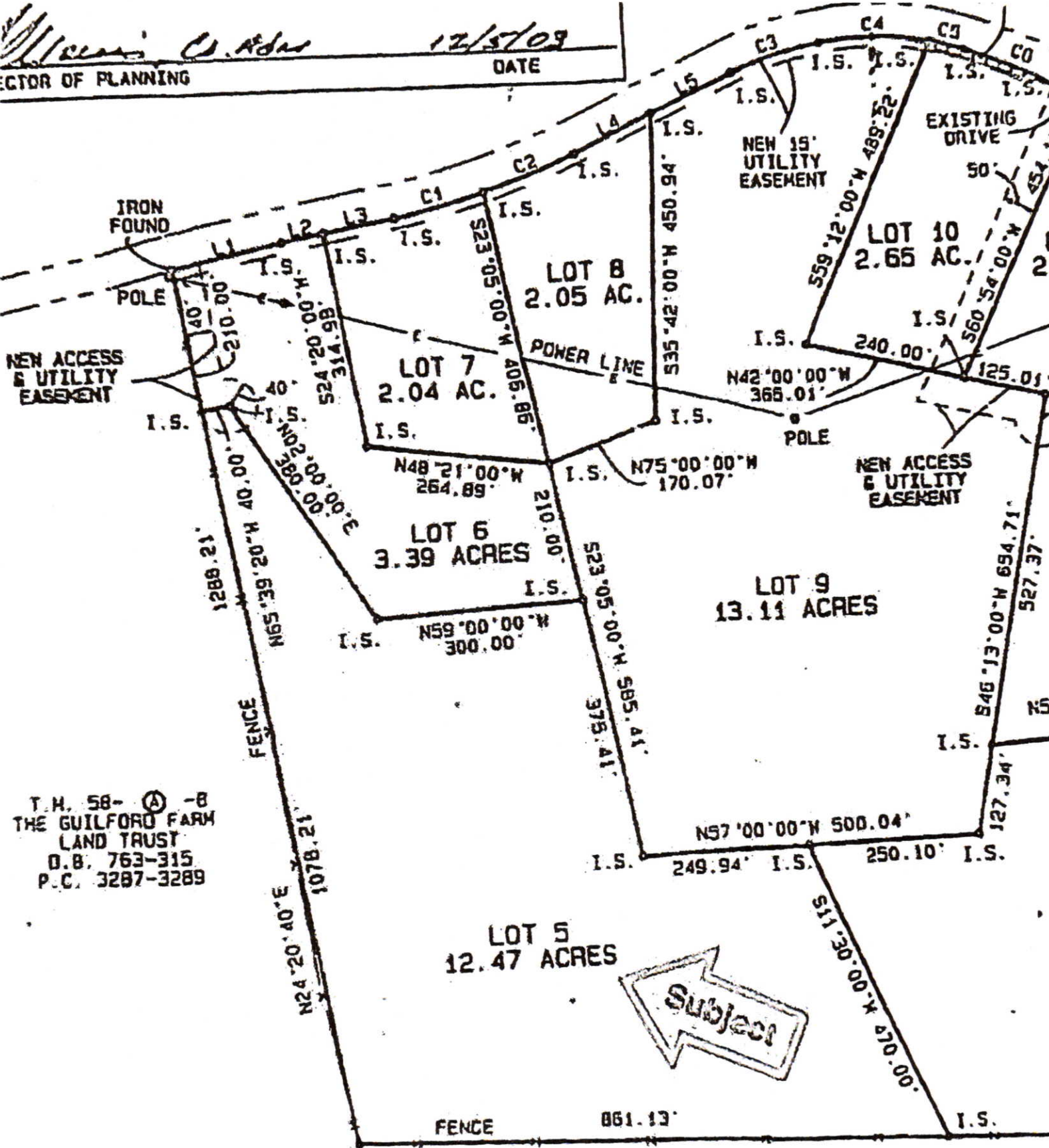


W. C. Adams
DIRECTOR OF PLANNING
DATE 12/5/09



T.H. 58- (A) -B
THE GUILFORD FARM
LAND TRUST
D.B. 763-315
P.C. 3287-3289

COMMONWEALTH OF VIRGINIA
R. W. Ray
ROGER W. RAY
1741

T.H. 64- (A) -3
JAMES H. & HELEN SNOW DICKERSON
D.O. 535-212
D.O. 38-310
D.O. 7-179 DESE.