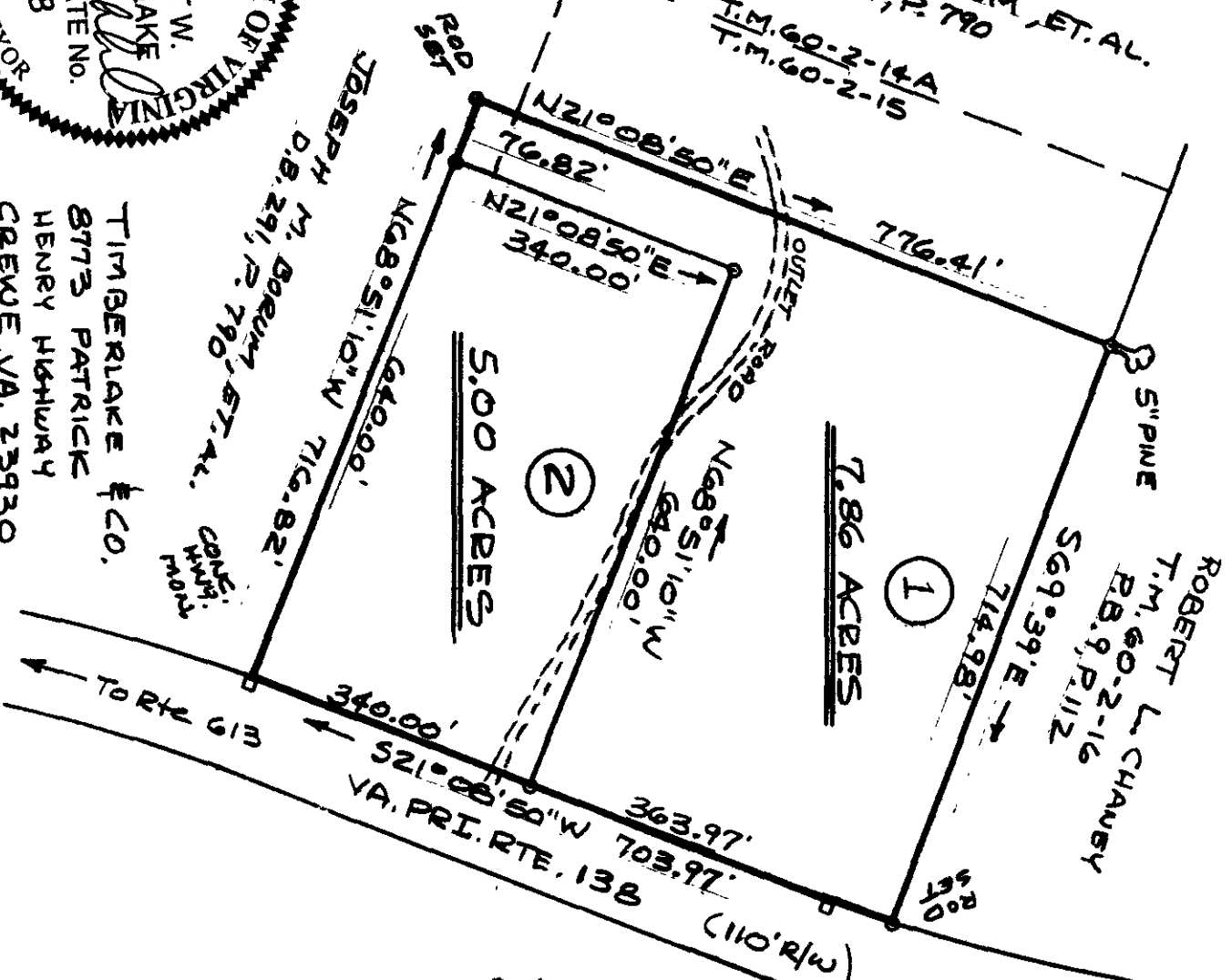


ROBERT W. TIMBERLAKE  
 LAND SURVEYOR  
 COMMONWEALTH OF VIRGINIA  
 CERTIFICATE NO. 1248

T.M. 60-2-12A  
 T.M. 60-2-13

JOSEPH M. BORUM, ET AL.  
 D.B. 291, P. 790  
 T.M. 60-2-14A  
 T.M. 60-2-15



TIMBERLAKE & CO.  
 8773 PATRICK  
 HENRY HIGHWAY  
 CREWE, VA. 23930  
 434-645-7628

CONC.  
 HWY.  
 MON.

TO RTE 613

VA. PRI. RTE. 13B  
 (110' R/W)

NOTE:  
 LINES BETWEEN PARCELS #1 & #2 ARE THE RESULT OF AN OFFICE COMPUTATION AND HAVE NOT BEEN STAKED IN THE FIELD.

R: 1854.86  
 CHD: 519049.05  
 CONC. HWY. MON  
 4° 52' 42"  
 82.41'

- ① - PORTIONS OF T.M. 60-2-13 & 15 - BELONGING TO JOSEPH W. BORUM, ET AL. - TO BE ACQUIRED BY BRICKLAND BREEDER FARM, INC.
- ② - T.M. 60-2-13A - BRICKLAND BREEDER FARM, INC. D.B. 179, P. 801

PLAT SHOWING PROPERTY SURVEYED FOR  
BRICKLAND BREEDER FARM, INC.  
 LOCATED IN  
 LOCHLEVEN MAG. DIST.  
 LUNenburg COUNTY, VA.  
 SCALE: 1" = 200'  
 22 MAR. 2004

PLAN # 03-61C