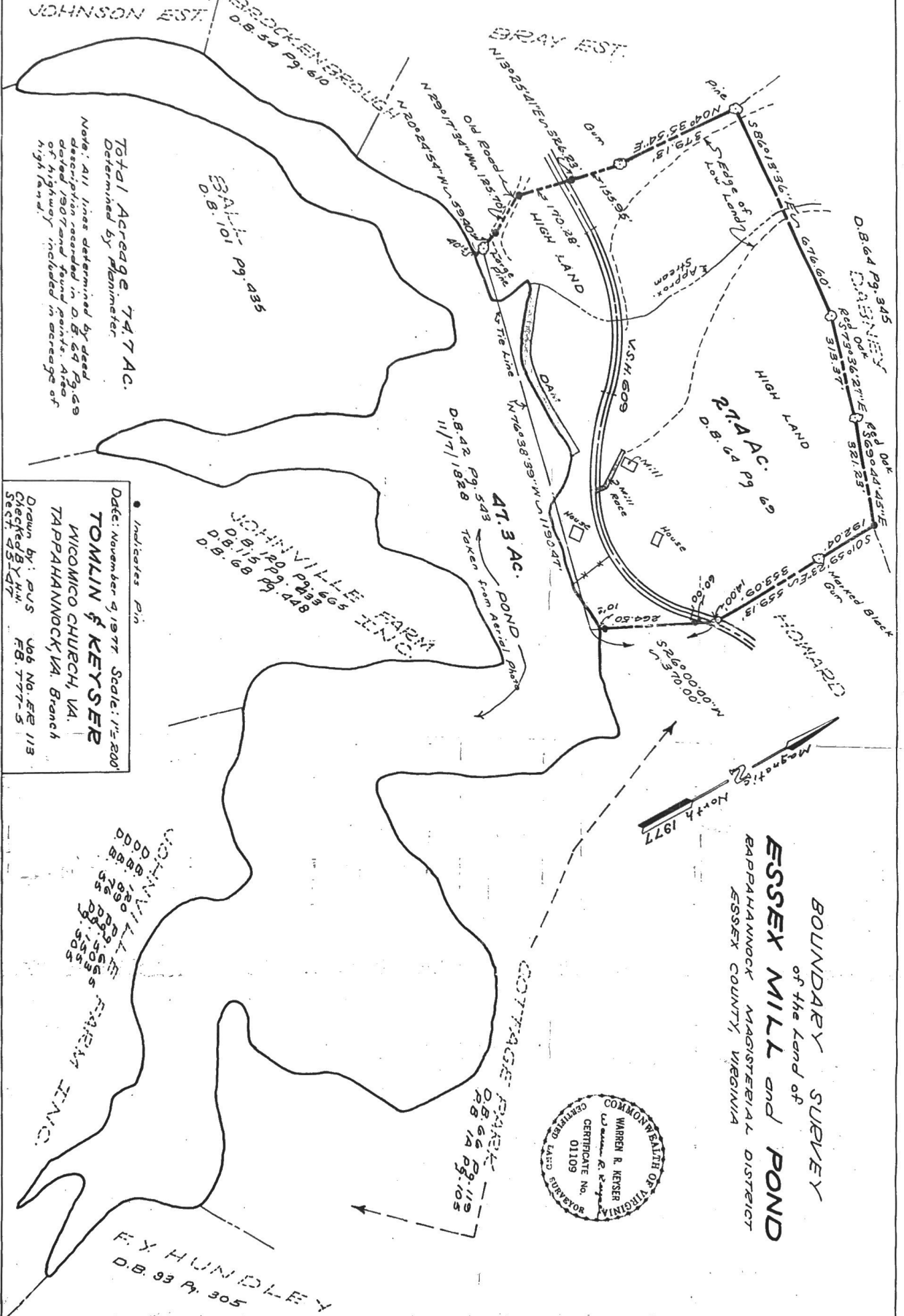
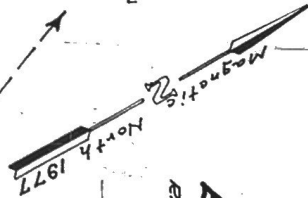


BOUNDARY SURVEY
of the land of
ESSEX MILL and POND
RAPAHANNOCK MAGISTERIAL DISTRICT
ESSEX COUNTY, VIRGINIA



Total Acreage 74.7 AC.
Determined by Planimeter

Note: All lines determined by deed description recorded in D.B. 64 Pg. 435 dated 1/30/74 and found points. Area of highway included in acreage of high land.

• Indicates Pin
Date: November 9, 1977 Scale: 1" = 200'
TOMLIN & KEYSER
WICOMICO CHURCH, VA.
TARPAHANNOCK, VA. Branch
Drawn by: PUS Job No. 512 113
Checked BY HW. FB. 777-5

JOHNSVILLE FARM INC.
D.B. 70 Pg. 665
D.B. 71 Pg. 448
D.B. 75 Pg. 665
D.B. 80 Pg. 505
D.B. 81 Pg. 505
D.B. 82 Pg. 505
D.B. 83 Pg. 505

F.Y. HUNDLEY
D.B. 93 Pg. 305

JOHNSON EST.

BRAY EST.

BRACKENBROUGH
D.B. 54 Pg. 610

ESSEX MILL
D.B. 101 Pg. 435

47.3 AC. POND
D.B. 42 Pg. 543
117.1828 Taken from Aerial Photo

JOHNSVILLE FARM INC.
D.B. 70 Pg. 665
D.B. 71 Pg. 448
D.B. 75 Pg. 665
D.B. 80 Pg. 505
D.B. 81 Pg. 505
D.B. 82 Pg. 505
D.B. 83 Pg. 505

29.71 AC. ESSEX MILL
D.B. 64 Pg. 435

D.B. 64 Pg. 345
D.B. 64 Pg. 345
D.B. 64 Pg. 345

D.B. 64 Pg. 345
D.B. 64 Pg. 345
D.B. 64 Pg. 345

D.B. 64 Pg. 345
D.B. 64 Pg. 345
D.B. 64 Pg. 345

COTTAGE PARK
D.B. 66 Pg. 113
D.B. 14 Pg. 105

JOHNSON EST.

BRADKENER ROAD
D.B. 54 Pg. 610

GRAY EST.
N 32° 25' 41" E - 326.28'

Total Acreage 74.7 AC.
Determined by Planimeter
Note: All lines determined by deed description recorded in D.B. 69 Pg. 69 dated 1907 and found points. Area of highway included in acreage of high land.

3.21 AC. Pg. 435
D.B. 101

Old Road
N 20° 17' 34" W - 59.80'

HIGH LAND
V.S.M. 609

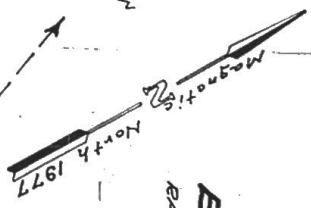
D.B. 64 Pg. 345
D.B. 73 Pg. 362
D.B. 90 Pg. 451
D.B. 91 Pg. 451
D.B. 92 Pg. 451
D.B. 93 Pg. 451
D.B. 94 Pg. 451
D.B. 95 Pg. 451
D.B. 96 Pg. 451
D.B. 97 Pg. 451
D.B. 98 Pg. 451
D.B. 99 Pg. 451
D.B. 100 Pg. 451

2.74 AC. Pg. 69
D.B. 64

47.3 AC. POND
D.B. 42 Pg. 543
D.B. 117 Pg. 1828
D.B. 115 Pg. 448
D.B. 120 Pg. 665
D.B. 115 Pg. 448
D.B. 68

JOHNSVILLE FARM INC.
D.B. 120 Pg. 665
D.B. 115 Pg. 448
D.B. 68

• Indicates Pin
Date: November 4, 1977 Scale: 1" = 200'
TOMLIN & KEYSER
WICOMICO CHURCH, VA.
TAPPAHANNOCK, VA. Branch
Drawn by: PUS J06 No. E12 113
Checked by: H.H. F8. 777-5
SECT. 45147



BOUNDARY SURVEY
of the land of
ESSEX MILL and POND
TAPPAHANNOCK MAGISTERIAL DISTRICT
ESSEX COUNTY, VIRGINIA



JOHNSVILLE FARM INC.
D.B. 120 Pg. 665
D.B. 115 Pg. 448
D.B. 68

COTTAGE FARM
D.B. 66 Pg. 113
D.B. 14 Pg. 105

F. Y. HUNDLEY
D.B. 93 Pg. 305