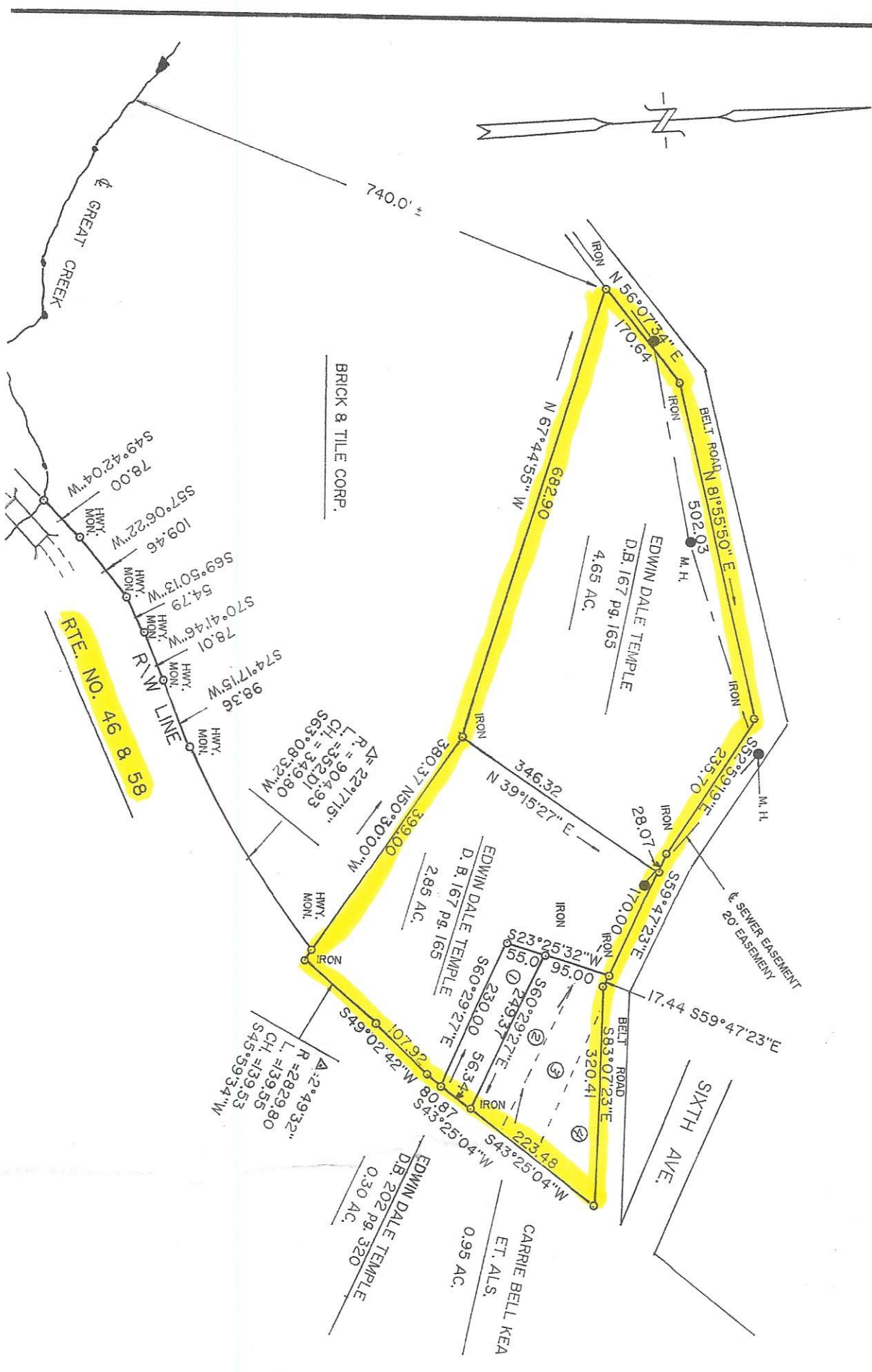


I HEREBY CERTIFY THAT THIS BOUNDARY SURVEY, TO THE BEST OF MY KNOWLEDGE AND BELIEF IS CORRECT AND COMPLIES WITH THE MINIMUM PROCEDURES AND STANDARDS ESTABLISHED BY THE VIRGINIA STATE BOARD OF ARCHITECTS, PROFESSIONAL ENGINEERS, LAND SURVEYORS, AND CERTIFIED LANDSCAPE ARCHITECTS

Julian E. Moore



BRICK & TILE CORP.

RTE. NO. 46 & 58

R.W. LINE

GREAT CREEK

SIXTH AVE.

SEWER EASEMENT
20' EASEMENT

