

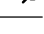

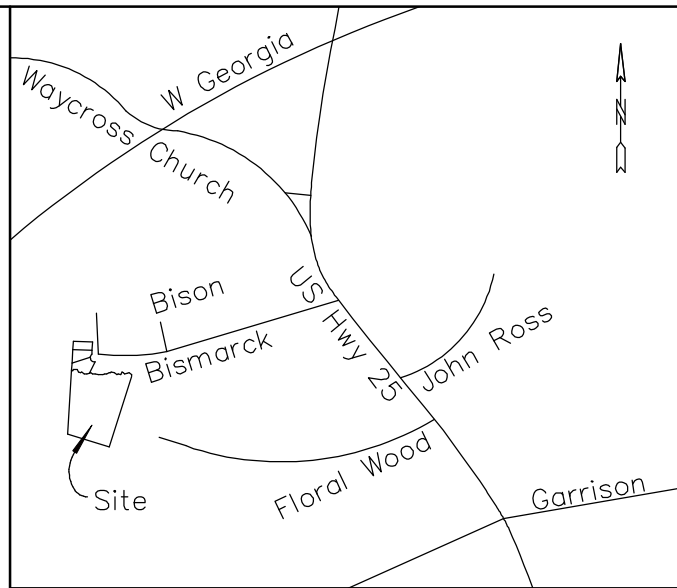


**LEGEND**  
 Iron Pin, New   
 Iron Pin, Old 1/2" RB Unless Noted   
 Power Pole   
 Over Head Power 



TMS#0603010101300  
 McCuen, Julia  
 DB 1541 pg 763

Ref. Plat Book 44-P, pg. 52

TMS#0603010101702  
 Satterfield, Hobart  
 DB 923 pg 399

TMS#0603010101200  
 13.80 Acres ±

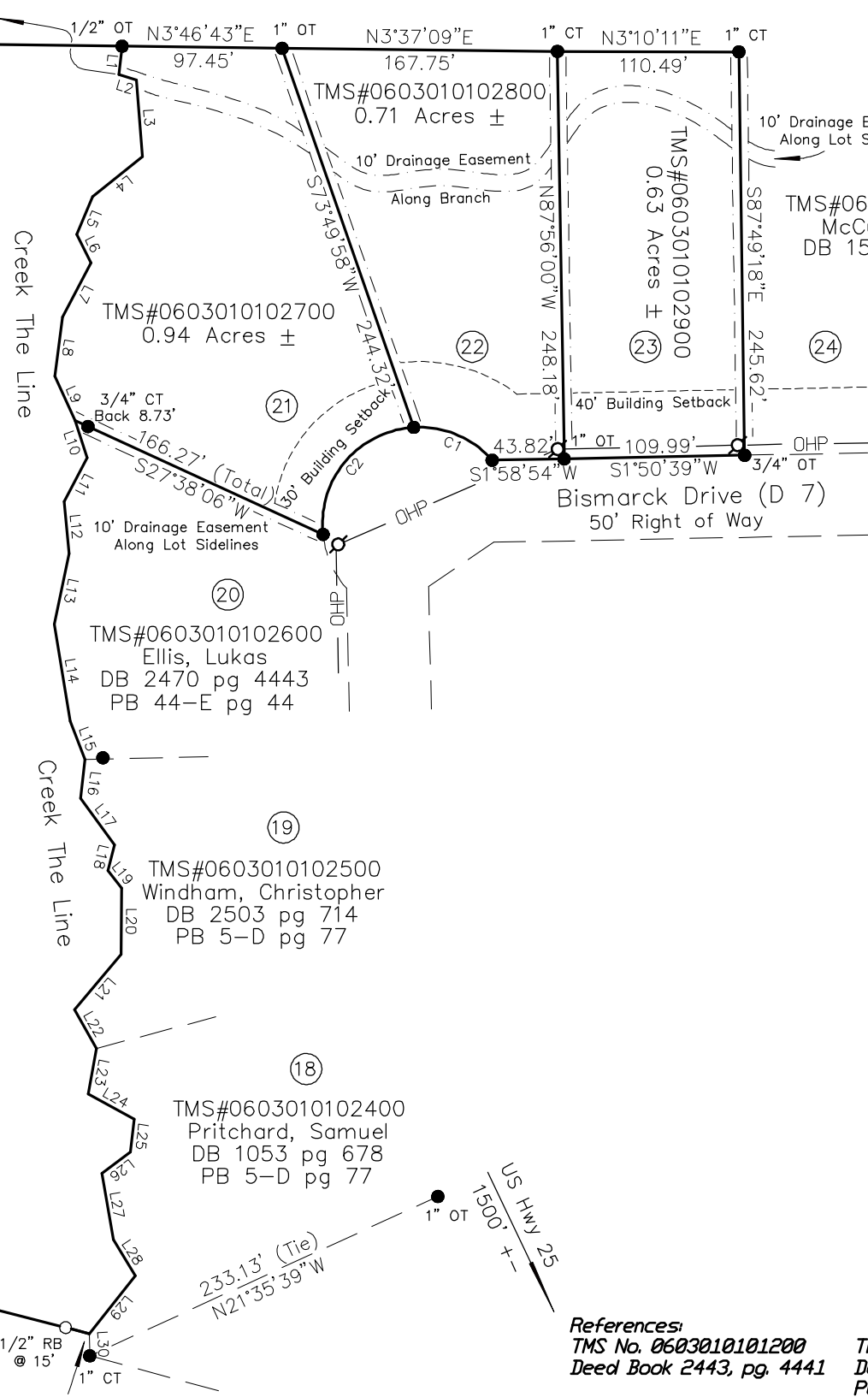
TMS#0603020102800  
 McCleer Properties, LLC  
 DB 2474 pg 958  
 PB M pg 83

TMS#0603040102500  
 Never Give Up Enterprises  
 DB 2508 pg 736  
 PB 43-B pg 82

TMS#0603040102400  
 Parra, Wendy  
 DB 2424 pg 271  
 PB 43-B pg 82

TMS#0603040102100  
 Corbett, Ginger  
 DB 2449 pg 3483  
 PB 43-B pg 82

TMS#0603040102000  
 Phillips, James  
 DB 2342 pg 320  
 PB 43-B pg 82



NUM	RADIUS	BEARING	DISTANCE
C1	58.80'	S25°41'02"W	51.76'
C2	58.80'	S46°40'57"E	85.39'

NUM	BEARING	DISTANCE
L1	S80°55'39"E	17.40'
L2	N21°10'04"E	11.25'
L3	N88°41'42"E	46.69'
L4	S35°45'53"E	38.65'
L5	S64°30'10"E	25.11'
L6	N66°46'00"E	19.18'
L7	S59°22'54"E	37.26'
L8	S79°21'17"E	36.43'
L9	N68°16'28"E	29.59'
L10	N74°37'21"E	23.89'
L11	S59°04'56"E	30.17'
L12	N87°33'27"E	31.95'
L13	S75°01'28"E	43.97'
L14	N83°32'57"E	59.78'
L15	N72°02'00"E	24.81'
L16	S81°10'23"E	23.82'
L17	N57°15'20"E	34.94'
L18	S73°20'41"E	16.09'
L19	N54°44'00"E	13.44'
L20	S86°23'39"E	40.63'
L21	S47°00'31"E	43.96'
L22	N63°22'58"E	26.95'
L23	S76°32'29"E	28.13'
L24	N31°46'17"E	32.18'
L25	S79°50'58"E	19.98'
L26	S34°10'52"E	21.87'
L27	N83°07'05"E	40.92'
L28	N61°15'06"E	25.60'
L29	S48°39'41"E	45.21'
L30	S88°02'30"E	13.47' (Tie)

References  
 TMS No. 0603010101200 Deed Book 2443, pg. 4441  
 TMS No. 0603010102700, 0603010102800, 0603010102900 Deed Book 2443, pg. 4441 Plat Book 44-P, pg. 52

★EXEMPTION FROM REVIEW PROCESS★  
 This plat is a resurvey of existing parcels of record.

I hereby state that to the best of my knowledge, information, and belief, the survey shown hereon was made in accordance with the requirements of the Minimum Standards Manual for the Practice of Land Surveying in South Carolina, and meets or exceeds the requirements for a Class A survey as specified therein; also there are no visible encroachments or projections other than those shown.

Lloyd D. Parnell PLS 25435


This survey is subject to any rights of way and easements of record, and any facts which may be disclosed by a full and accurate title search.

This property does not lie in a designated flood hazard area.



State of South Carolina  
 County of Greenville  
 Dakota Hills Subdivision  
 Boundary Survey of 3 Lots & 1 Tract  
 Surveyed at the request of Meares Land & Auction

**GEOTEK**  
 Land Surveyors  
 310 Grey Road  
 Pelzer, SC 29669  
 864-350-4354

Scale: 1"=100'  April 6, 2017