

Laurens County Dept. of Public Works  
DIRECTORS OFFICE

APPROVED SIGNATURE *Scott Holland*

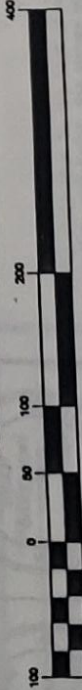
APPROVED BY:  
E 911 OFFICE  
*Scott Holland*

*\* Tract A and tract pending for  
249.95 ft on Hwy 76 are being  
purchased jointly by Timothy Childs.  
Randy E Gline tract is not  
approved due to insufficient road  
frontage.*

LEGEND

- IRON PIN FOUND
- #5 RE-BAR SET W/CAP
- ⊕ UTILITY POLE

GRAPHIC SCALE



( IN FEET )  
1 inch = 100 ft

I HEREBY STATE TO THE BEST OF MY KNOWLEDGE, INFORMATION AND BELIEF, THE SURVEY SHOWN HEREON WAS MADE IN ACCORDANCE WITH THE REQUIREMENTS OF THE MINIMUM STANDARDS MANUAL FOR THE PRACTICE OF LAND SURVEYING IN SOUTH CAROLINA, AND MEETS OR EXCEEDS THE REQUIREMENTS FOR A CLASS B SURVEY AS SPECIFIED THEREIN. ALSO THERE ARE NO APPARENT ENCROACHMENTS, PROJECTIONS, OR SETBACKS AFFECTING THE PROPERTY OTHER THAN THOSE SHOWN. THIS PLAT DOES NOT DESIGNATE ANY WETLANDS OR HAZARDOUS MATERIALS THAT MAY OR MAY NOT EXIST.

*Paul C. Wash*  
PAUL C. WASH SCPLS. # 3012

U. S. HWY. 76  
66' R/W

TIE LINE  
N 58°55'56" E 214.84'

N 53°18'56" E  
841.38' TO THE INTERSECTION OF  
HENDERSON CHURCH ROAD

APPROX. LOCATION OF OLD  
HWY. 76

AMERICAN GENERAL  
FINANCE, INC.  
D. B. 493 PG. 148  
P. B. A84 PG. 4

JANE WALKER  
D. B. 272 PG. 275  
P. B. 60 PG. 57

JUDY D. & RICKY L  
FOWLER  
D. B. 466 PG. 90  
P. B. 63 PG. 618

RANDY E. CLINE  
D. B. 461 PG. 97  
P. B. A120 PG. 2

TRACT A  
2.14 ACRES

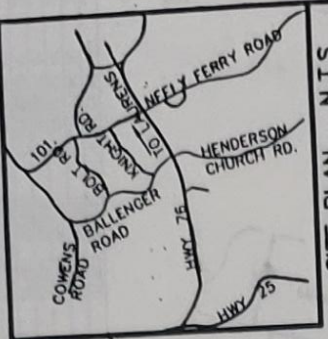
RANDY A. & CINDY L POWELL  
D. B. 305 PG. 132  
P. B. 36 PG. 288

REFERENCES  
TAX MAP # 057-00-00-035  
D. B. 332 PG. 168  
P. B. 60 PG. 57

SURVEY FOR

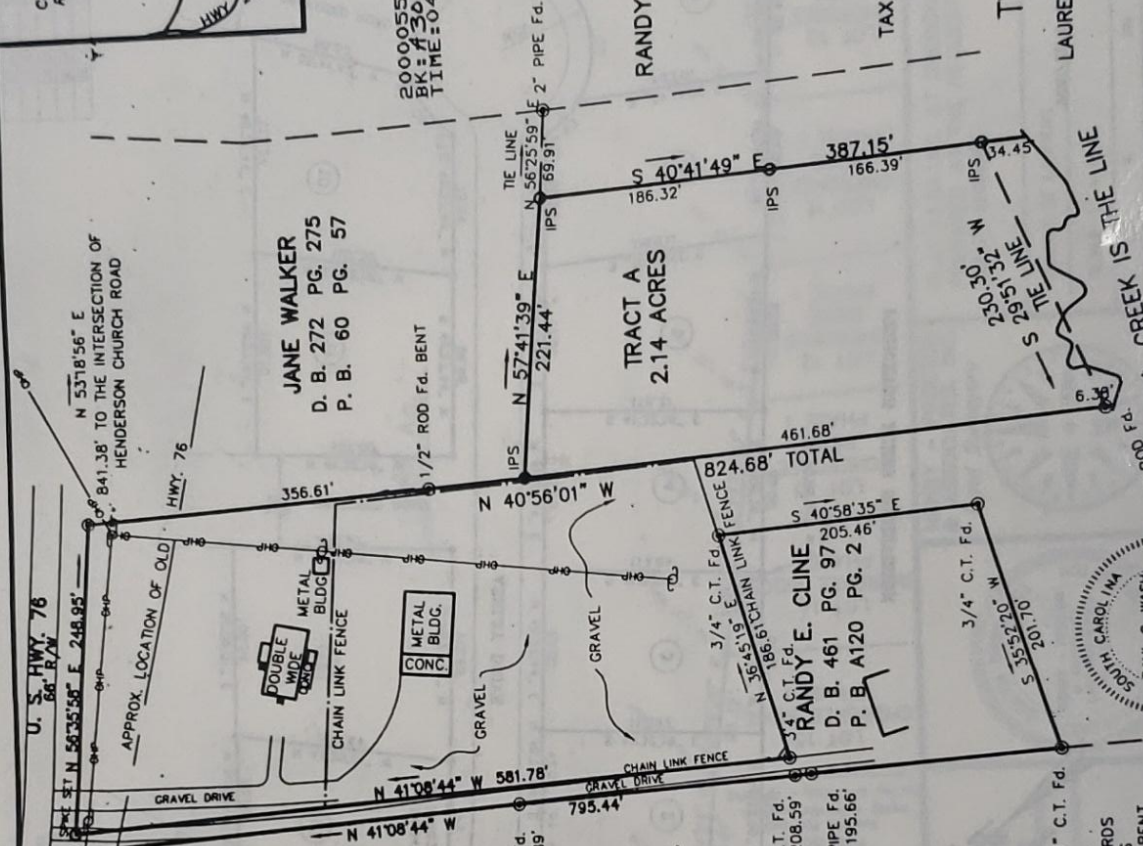
TIMOTHY CHILDS  
LOCATED AS SHOWN IN  
LAURENS COUNTY, SOUTH CAROLINA  
MAY 11, 2000

PAUL C. WASH  
SURVEYING CO., INC.  
419 STANLEY AVE.  
GREENWOOD, S. C. 29649  
PHONE (864) 2238408



SITE PLAN N.T.S.

200005583-06/15/2000  
BK: A304 PG: 10  
TIME: 04:08P LAURENS COUNTY S



3/8" ROD Fd.  
C/N CREEK IS THE LINE