

AUCTION

84^{+/-} ACRES NON-PRESERVED LAND
SPRINGFIELD TWP, BURLINGTON COUNTY, NJ

BY ORDER OF THE ESTATE

JUNE 13TH



Max Spann Real Estate & Auction Co.
P. O. Box 4992
Clinton, New Jersey 08809
A licensed NJ Real Estate Broker



OFFICES: NEW YORK - NEW JERSEY - FLORIDA
888-299-1438 | maxspann.com



Bid On-Line!

Get the Max Spann Smartphone App or go on-line



AUCTION

BY ORDER OF THE ESTATE

84^{+/-} ACRES NON-PRESERVED LAND

SPRINGFIELD TWP, BURLINGTON COUNTY, NJ

JUNE 13TH



BY ORDER OF THE ESTATE

84^{+/-} ACRES NON-PRESERVED LAND

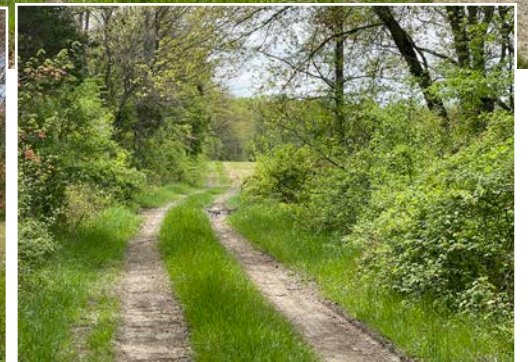
- **Prime Location:** Situated in one of the most renowned farming areas. This property offers convenient access to major highways such as Route 206, I-295 and I-95. It's an ideal location accessing markets in Princeton, Philadelphia, New York City, or other nearby destinations.
- **Abundant Space:** With a sprawling 84 acres, this real estate parcel provides ample room for various possibilities. Whether you envision a private estate, agricultural pursuits, or development, this expansive land offers endless potential.
- **Scenic Beauty:** The property's picturesque surroundings, including open fields and wooded areas, create a serene and captivating environment for your vision to unfold.
- **Residential Subdivision or Family Compound Opportunity:** Non-preserved farm in the AR-10 zone stipulating 10 acre residential zoning.

PROPERTY PREVIEWS 12 to 2 PM:

Wednesday, May 29th & Wednesday, June 5th

ONLINE AUCTION BIDDING CONCLUDES

Thursday, June 13, 2024 at 1 pm



Download the property information package at maxspann.com

PROPERTY ADDRESS:

1562 Jacksonville Road, Springfield Twp
(Burlington), Burlington County, NJ 08016



888-299-1438
MAXSPANN.COM

OVER 50 YEARS OF TRUSTED SERVICE
SERVING THE NATION

OFFICES: NEW YORK - NEW JERSEY - FLORIDA

THE AUCTION ADVANTAGE

Interested in selling a farm or land?

Click the QR code to find out
more about the auction process.

