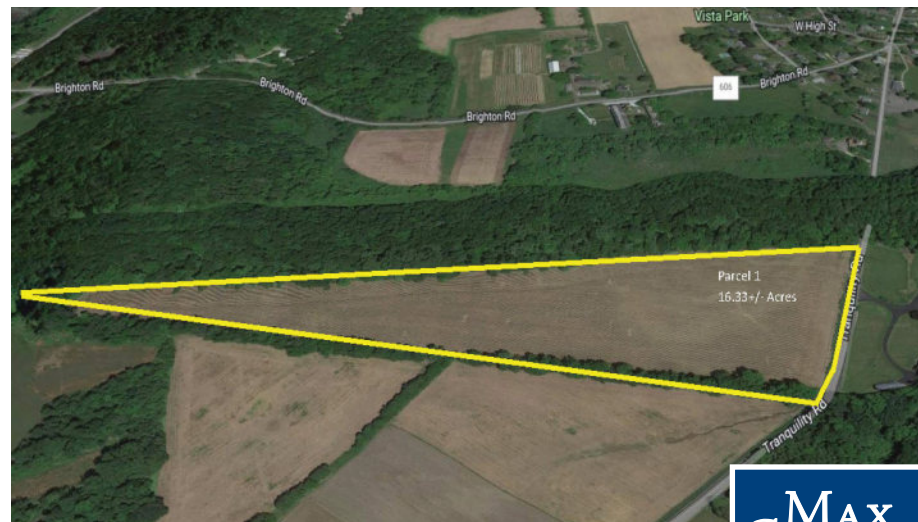
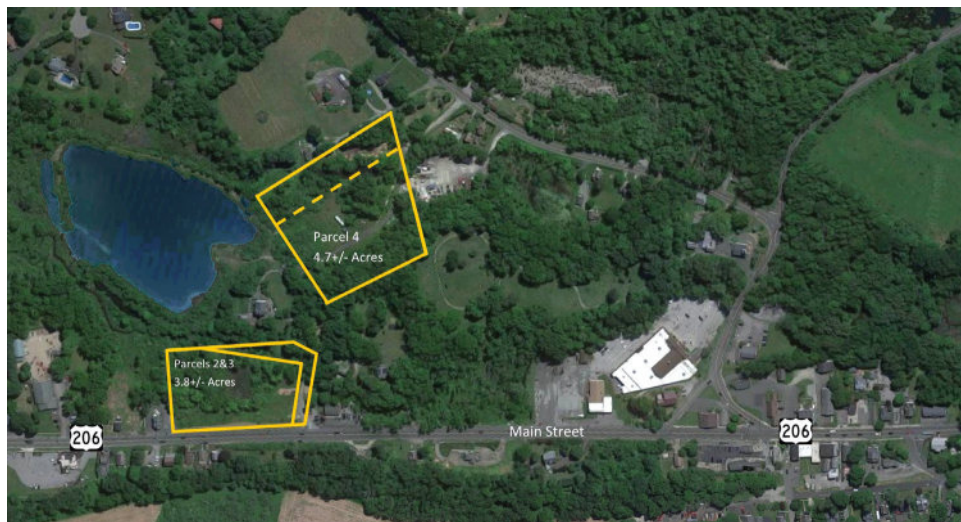


By Order of the Borough of Andover

# AUCTION

## 8 RESIDENTIAL AND COMMERCIAL LOTS



March 9<sup>th</sup>  
Andover, Sussex County, NJ



By Order of the Borough of Andover

# AUCTION



## 8 Residential and Commercial Lots Sold in 6 Parcels



- Ample sized parcels up to 16.33<sup>±</sup> Acres.
- Rank your favorites then bid on One, Two, or Several!
- Quaint Andover Borough is along one of the main arteries of Sussex County with specialty stores, antique shops, and local restaurants.
- Andover Borough is situated along Route 206 and convenient to State Parks, Mountain Creek Ski Center, and Crystal Springs Golf Course.



Andover, Sussex County, NJ

Online Auction Bidding Concludes  
Thursday, March 9, 2023 at 11 am

Download the Property Information  
Package at [maxspann.com](http://maxspann.com) and then  
drive-by the site to preview the property.



Max Spann Real Estate & Auction Co.  
P. O. Box 4992  
Clinton, New Jersey 08809

[auctions@maxspann.com](mailto:auctions@maxspann.com)

A licensed NJ Real Estate Broker



OFFICES: NEW YORK - NEW JERSEY - FLORIDA

**888-299-1438 | [maxspann.com](http://maxspann.com)**



**Bid On-Line!**

Get the Max Spann Smartphone App or go on-line

