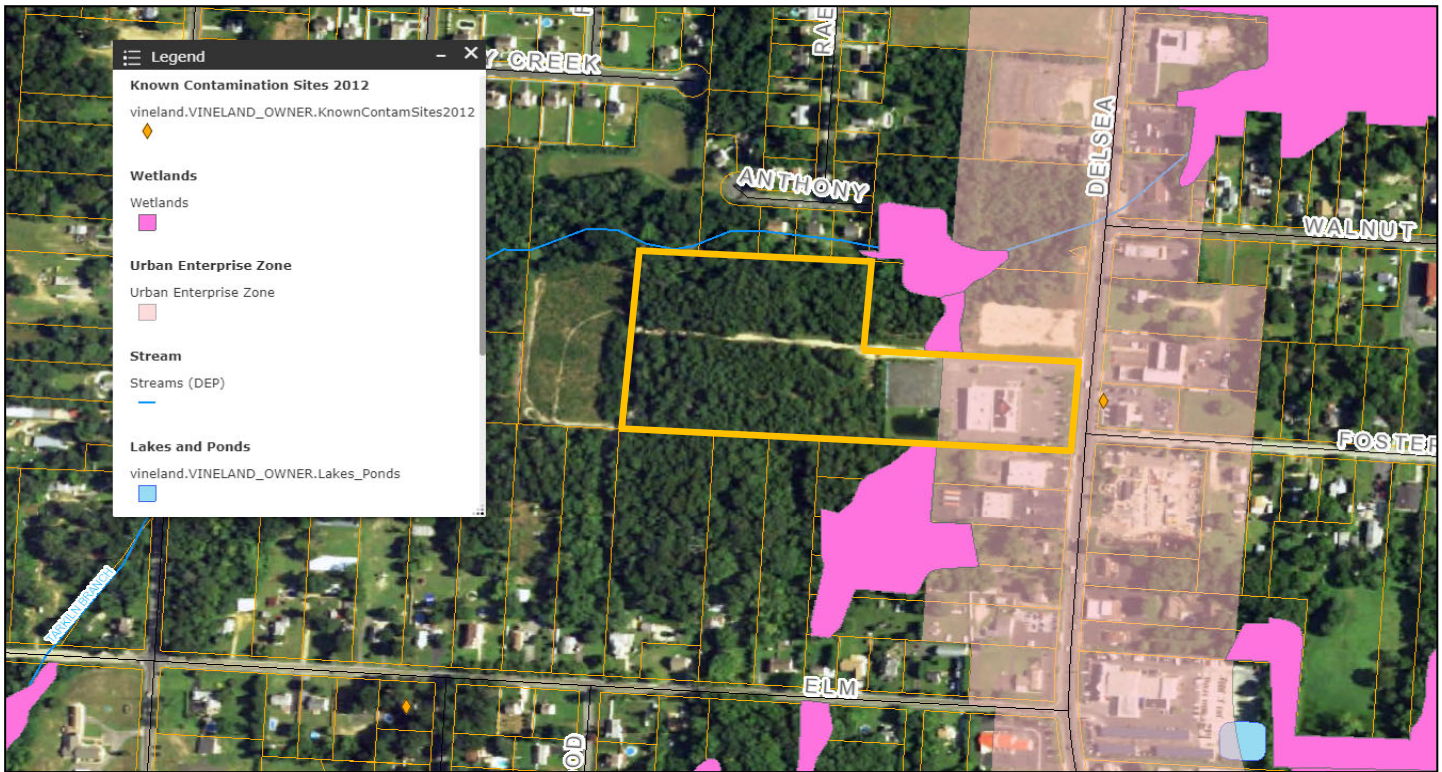


PROPERTY OVERVIEW

1332 S. Delsea Drive, Vineland City, Cumberland County, New Jersey



SHERIFF SALE

13,677+/- SF Masonry & Steel Building on 12.04+/- Acres

Former Off-Track Betting Facility

1332 South Delsea Drive (Route 47), Vineland City, Cumberland County, NJ

- 276+/- Ft Frontage on S Delsea Drive (Route 47), a major Vineland thoroughfare
- Zoning: B-3, Business District (front) in the Urban Enterprise Zone; R-5, Residential District (rear)
- Utilities: Public water, sewer, natural gas, electric
- Approximate 2021 Taxes: \$78,000
- 200+/- Parking
- Close to Route 55, I-295, and the Atlantic City Expressway

Sheriff Sale Location: Cumberland County Sheriff's Office, 220 North Laurel St, Bridgeton, NJ

NOTICE: Regardless of the amount due in the foreclosure judgment, the foreclosing lender will not bid higher than \$10,000.00 at the Sheriff sale. The property is being sold subject to liens for unpaid real estate taxes exceeding \$465,000.00 and unpaid water and sewer charges. Actual figures can be obtained from the Vineland City Tax Collector.

Sheriff #: 22000159

Court Case #: F140921

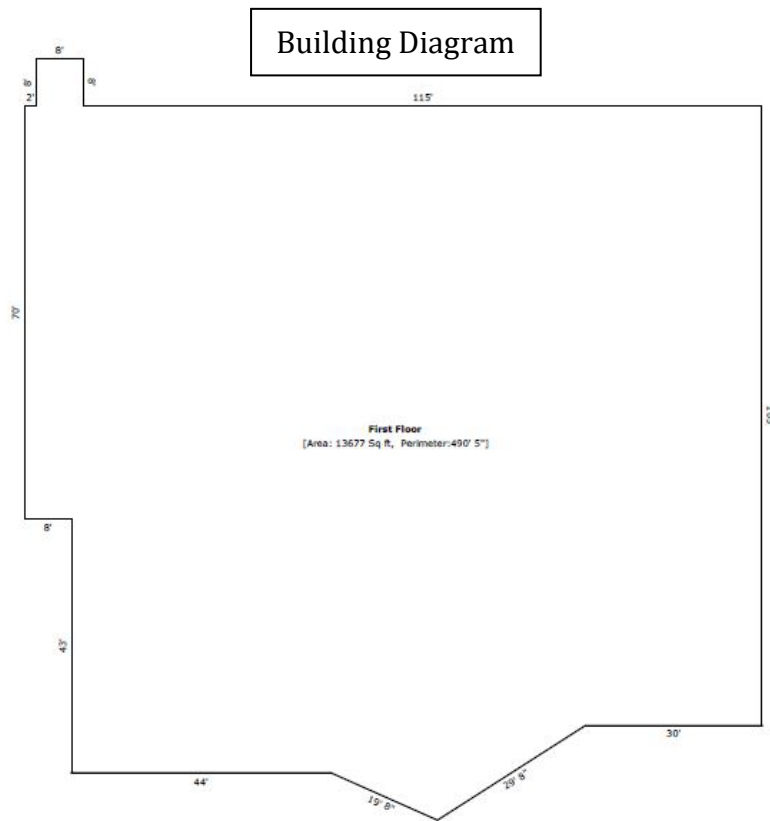
Sales Date: 7/6/2022 at 2 pm

For details click on this link:

[Sheriff Sales - Cumberland County, New Jersey \(NJ\)](#)

PROPERTY OVERVIEW

1332 S. Delsea Drive, Vineland City, Cumberland County, New Jersey



- Flood Zone: Zone "X", outside 100 and 500-year flood plains
- Building Improvements:
 - 13,677+/-SF, 1-story building built in 2002
 - concrete curbing and walkways
 - metal pole site lighting
 - storm drainage system with on-site retention basin
 - front/side/rear macadam parking areas
- 10FT ROW to the Landis Sewerage Authority

Sheriff #: 22000159
Court Case #: F140921
Sales Date: 7/6/2022 at 2 pm

For details click on this link:
[Sheriff Sales - Cumberland County, New Jersey \(NJ\)](#)