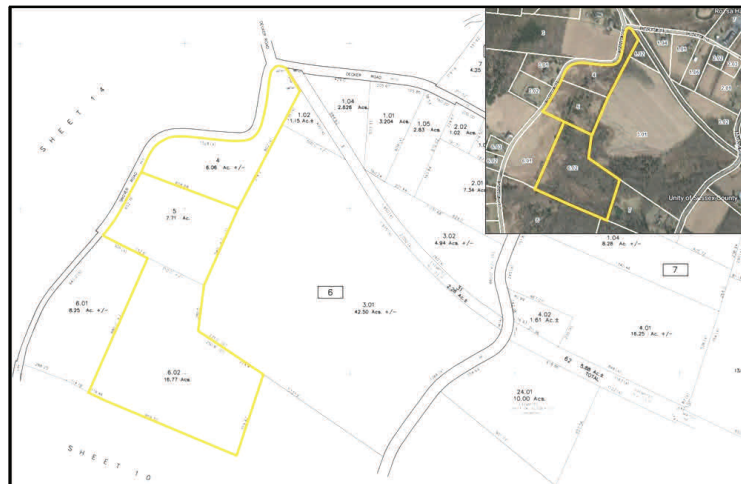
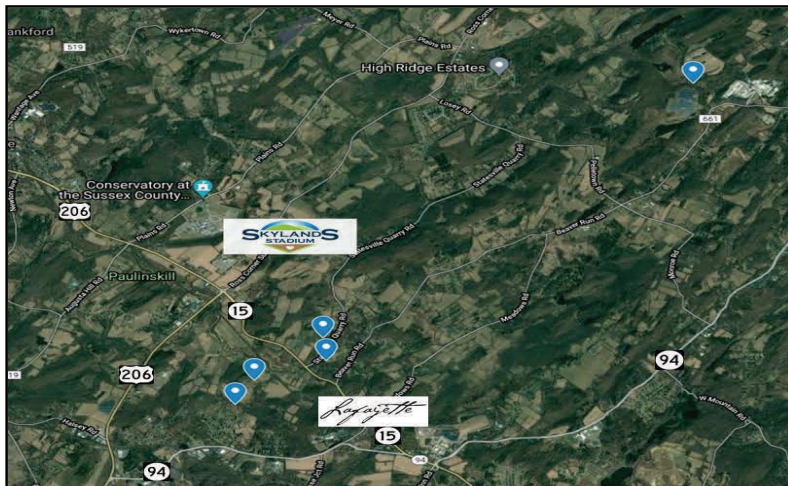




AUCTION

By Order of Lafayette Twp, NJ Seven Lots Throughout the Township



Lafayette Township-Private and Rural Setting in Northwest New Jersey.

- Attention Investors, Builders and Neighbors! Buy One, Two or Several Lots-Your Choice.
- Enjoy nature in Sussex County with convenient access to Stokes State Forest, High Point State Park, the Appalachian Trail, Crystal Springs Golf Course, and Lake Hopatcong.
- Close to Sparta, Newton, Andover, Routes 206, 15 and 94.

Parcel #1—3 Lots—30.54+/- Acres



Parcel #	Street	Block	Lot (s)	Acres +/-	Zoning
1	53-57 Snover Rd	6	4, 5, & 6.02	30.54	R-5.0
2	27 Statesville Quarry Rd	18	14.07	6.3	R-5.0
3	12 Statesville Quarry Rd	19	4.06	3.5	R-2.5
4	39 Snover Rd	5.01	26	2.4	R-5.0
5	21 Lewisburg Rd	30	5	1.06	R-5.0

Online Auction Bidding concludes:
Thursday, July 15, 2021 at 11 am

Broker Participation Invited

For a Property Information Package register at www.maxspann.com or call: 888-299-1438 email: auctions@maxspann.com



Bid Online with the Max Spann App
Get it Now!



MAX SPANN REAL ESTATE & AUCTION CO

PO BOX 4992, CLINTON NJ 08809
A licensed NJ Real Estate Broker

"50 Years Serving the Nation"

Office Locations:

New York, NY | Clinton, NJ | Naples, FL

