

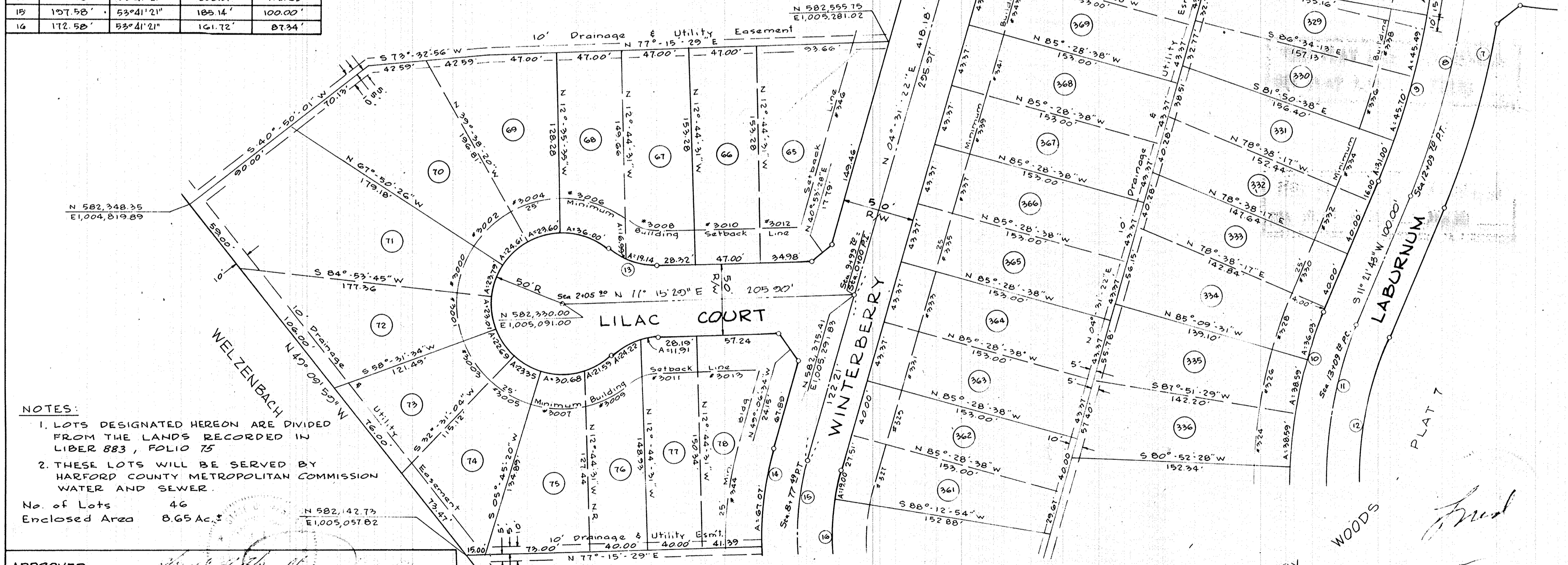
LOCATION MAP  
NO SCALE



CURVE DATA				
N <sup>o</sup>	R	Δ	L	T
1	3263.01'	13°59'56"	802.12'	403.07'
2	3258.01'	13°59'56"	796.01'	400.00'
3	3233.01'	13°59'56"	789.91'	396.93'
4	572.57'	30°38'20"	306.18'	156.85'
5	547.57'	30°38'20"	292.81'	150.00'
6	522.57'	30°38'20"	279.44'	143.15'
7	604.02'	33°33'08"	353.71'	182.09'
8	570.02'	33°33'08"	332.07'	174.55'
9	554.02'	33°33'08"	324.43'	167.01'
10	316.61'	56°33'52"	312.57'	170.35'
11	291.61'	56°33'52"	287.89'	156.50'
12	266.61'	56°33'52"	263.21'	143.45'
13	50.00'			
14	222.58'	53°41'21"	208.57'	112.65'
15	157.58'	53°41'21"	185.14'	100.00'
16	172.58'	53°41'21"	161.72'	87.34'

**THIS PLAT HAS BEEN REVISED  
SEE PLAT BOOK 43 FOLIO 59**

**THIS PLAT HAS BEEN REVISED  
SEE PLAT BOOK 49 FOLIO 65**



**NOTES:**  
 1. LOTS DESIGNATED HEREON ARE DIVIDED FROM THE LANDS RECORDED IN LIBER 883, FOLIO 75  
 2. THESE LOTS WILL BE SERVED BY HARFORD COUNTY METROPOLITAN COMMISSION WATER AND SEWER.  
 No. of Lots 46  
 Enclosed Area 8.65 Ac. ±

APPROVED [Signature] DIRECTOR OF PUBLIC WORKS  
 APPROVED [Signature] CHAIRMAN HARFORD COUNTY PLANNING & ZONING COMMISSION  
 APPROVED [Signature] EXECUTIVE SECRETARY HARFORD COUNTY PLANNING & ZONING COMMISSION  
 APPROVED [Signature] HARFORD COUNTY COMMISSIONERS  
 APPROVED [Signature] COUNTY HEALTH OFFICER

THE OWNERS HEREBY GRANT TO THE COUNTY COMMISSIONERS OF HARFORD COUNTY AN EASEMENT FOR THE CONSTRUCTION, MAINTENANCE, REPAIR AND REPLACEMENT OF WATER, SEWERAGE AND STORM DRAINAGE LINES WITHIN THE DRAINAGE AND UTILITY AND ROAD IMPROVEMENT EASEMENTS AS SHOWN ON THIS PLAT.  
 THE STREETS & ROADS SHOWN HEREON AND THE MENTION THEREOF IN DEEDS, IS FOR THE PURPOSE OF DESCRIPTION ONLY, AND THE SAME ARE NOT INTENDED TO BE DEDICATED TO PUBLIC USE; THE FEE SIMPLE TITLE TO THE BED SHOWN HEREON IS EXPRESSLY RESERVED BY THE PRESENT OWNER, HIS SUCCESSORS, HEIRS, AND ASSIGNS.  
 NOT MORE THAN ONE PRINCIPAL BUILDING WILL BE PERMITTED ON ANY LOT, AND NO LOT WILL BE RESUBDIVIDED TO PRODUCE A BUILDING SITE OF LESS AREA OR WIDTH THAN THE MINIMUM REQUIRED BY SUBDIVISION REGULATIONS OR THE COUNTY HEALTH OFFICER.

DATE \_\_\_\_\_ OWNER \_\_\_\_\_

PLAT 2  
**WILLOUGHBY WOODS**  
 A SUBDIVISION BY  
**ART BUILDERS INC.**  
 FIRST ELECTION DISTRICT  
 HARFORD CO., MD.

*Frederick Ward Associates*  
 LAND SURVEYORS & CIVIL ENGINEERS  
 CENTURY BUILDING  
 BEL AIR, MARYLAND

DATE	SCALE	DR BY	CH BY	PLAT NO	JOB NO.
10-22-71	1" = 50'	J.C. W.A.	A.F.	2	