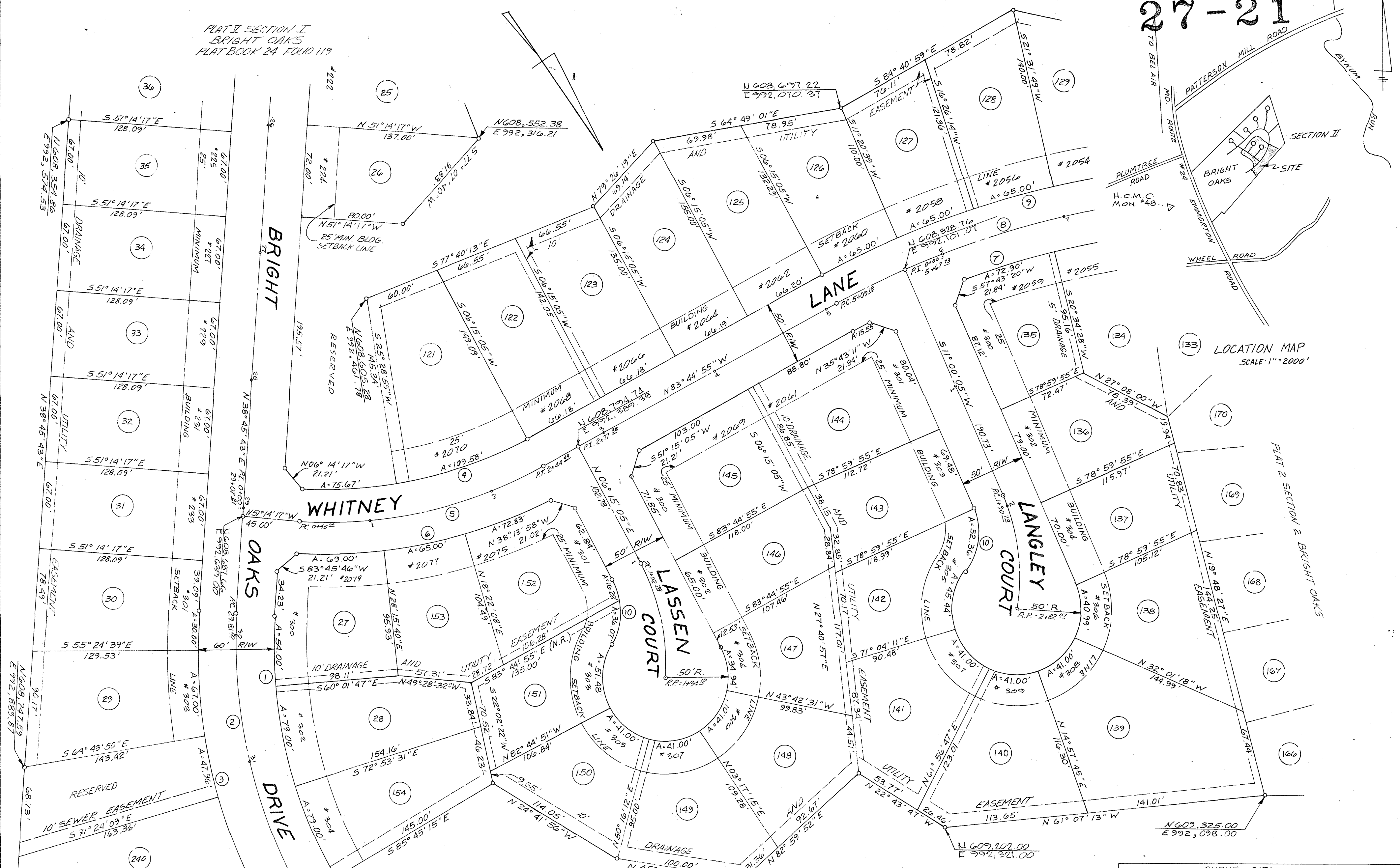


PLAT II SECTION I
BRIGHT OAKS
PLAT BOOK 24 FOLIO 119



LOCATION MAP
SCALE: 1"=2000'

Rec'd for Record **SEP 28 1972**
at _____ o'clock M. Sama
by recorded in Liber HDC
No. 27 Folio 21 one of the
Plat Records of Harford
Co. Md. and examined per
H. DOUGLAS CHILCOAT, Clerk

NOTES:
1. LOTS DESIGNATED HEREON ARE DIVIDED FROM THE LAND RECORDS IN LIBER 789, FOLIO 52.
2. THESE LOTS WILL BE SERVED BY HARFORD COUNTY METRO POLITAN COMMISSION WATER AND SEWER

CURVE DATA				
No.	R	Δ	L	T
1	351.91'	77°26'17"	475.62'	282.12'
2	381.91'	77°26'17"	516.17'	306.18'
3	411.91'	77°26'17"	556.72'	330.23'
4	326.48'	32°30'39"	185.25'	95.19'
5	351.48'	32°30'39"	199.44'	102.48'
6	376.48'	32°30'39"	213.62'	109.77'
7	681.24'	31°56'45"	379.83'	194.99'
8	706.24'	31°56'45"	393.77'	202.15'
9	731.24'	31°56'45"	407.71'	209.30'
10	50.00'	60°00'00"	52.36'	28.87'

⊙ SHOWN HEREON INDICATES LOT NUMBERS
⊙ SHOWN HEREON INDICATES HOUSE NUMBERS.

NO. OF LOTS: 38
ENCLOSED AREA: 10.215 Ac.±

APPROVED _____ 9/12/72
DIRECTOR OF PUBLIC WORKS

APPROVED _____
HARFORD COUNTY PLANNING COMMISSION

APPROVED _____
PLANNING & ZONING

APPROVED _____
HARFORD COUNTY COMMISSIONERS

APPROVED _____
COUNTY HEALTH OFFICER

THE OWNERS HEREBY GRANT TO THE COUNTY COMMISSIONERS OF HARFORD COUNTY AN EASEMENT FOR THE CONSTRUCTION, MAINTENANCE, REPAIR AND REPLACEMENT OF WATER, SEWERAGE AND STORM DRAINAGE LINES WITHIN THE DRAINAGE AND UTILITY AND ROAD IMPROVEMENT EASEMENTS AS SHOWN ON THIS PLAT.

THE STREETS & ROADS SHOWN HEREON AND THE MENTION THEREOF IN DEEDS, IS FOR THE PURPOSE OF DESCRIPTION ONLY, AND THE SAME ARE NOT INTENDED TO BE DEDICATED TO PUBLIC USE; THE FEE SIMPLE TITLE TO THE BED SHOWN HEREON IS EXPRESSLY RESERVED BY THE PRESENT OWNER, HIS SUCCESSORS, HEIRS, AND ASSIGNS.

NOT MORE THAN ONE PRINCIPAL BUILDING WILL BE PERMITTED ON ANY LOT, AND NO LOT WILL BE RESUBDIVIDED TO PRODUCE A BUILDING SITE OF LESS AREA OR WIDTH THAN THE MINIMUM REQUIRED BY SUBDIVISION REGULATIONS OR THE COUNTY HEALTH OFFICER.

PLAT ONE
SECTION II
BRIGHT OAKS
A SUBDIVISION BY
ART BUILDERS INC.
1 BEL AIR SOUTH
3RD DISTRICT HARFORD CO., MD.

Frederick Ward Associates
LAND SURVEYORS & CIVIL ENGINEERS
CENTURY BUILDING
BEL AIR, MARYLAND

DATE	SCALE	DR. BY	CH. BY	PLAT NO.	JOB NO.
2-8-72	1"=50'	S.J.B.	D.S.		

HARFORD COUNTY CIRCUIT COURT (Subdivision Plats, HA) Plat Book HDC 27, pp. 18-19, MSA 55U 1246-2990, Date Available 1974-09-28, Printed 2005/05/20/2025 Maryland State Archives