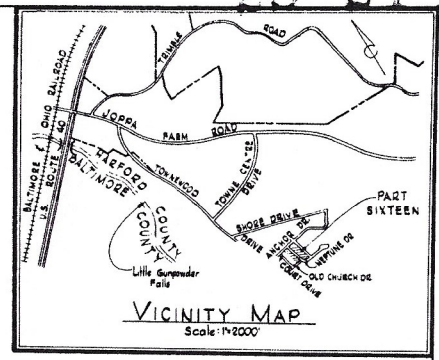
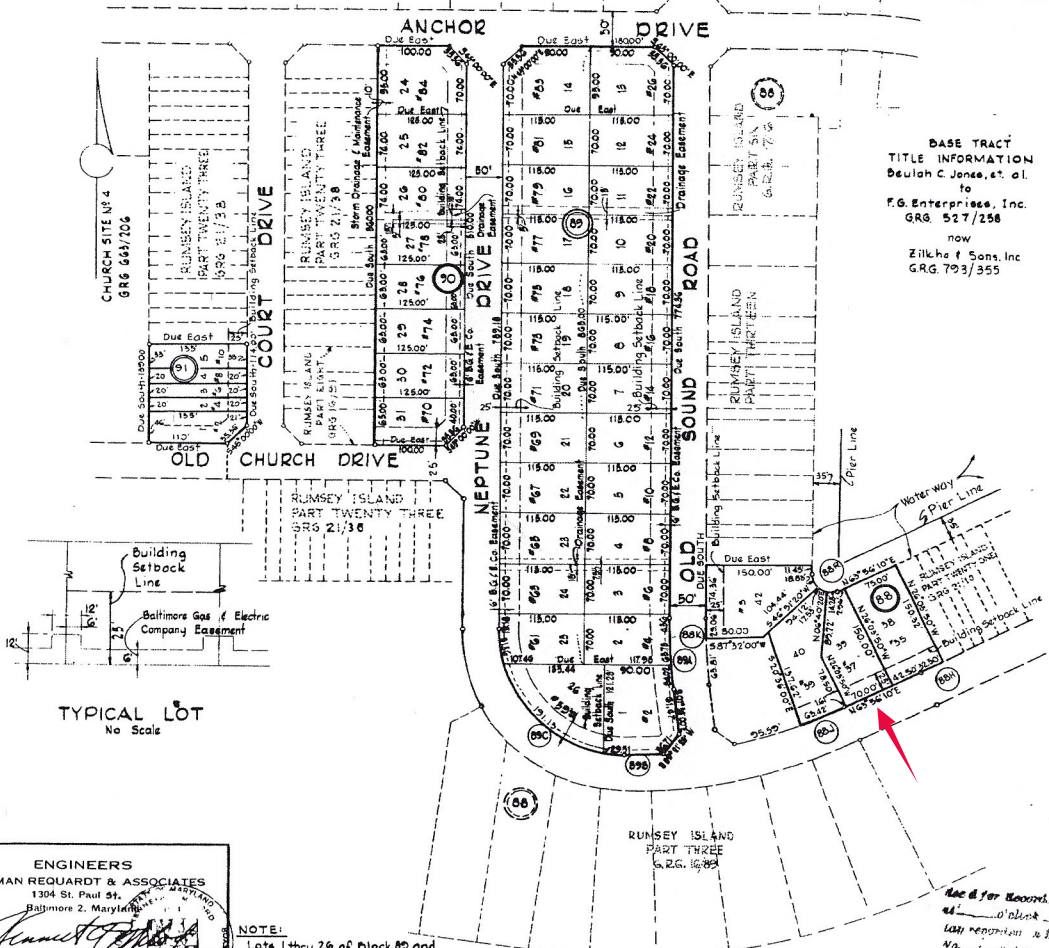


AREA TABULATION

Block 88	: 1.0051 Acres
Block 89	: 5.0403 Acres
Block 90	: 1.5926 Acres
Block 91	: 0.4236 Acres
Total	: 8.1016 Acres



BASE TRACT TITLE INFORMATION
 Deulah C. Jones, et. al.
 to
 F.G. Enterprises, Inc.
 GR. 527/258
 now
 Zilke & Sons, Inc.
 G.R. 793/355



- NOTES:**
1. Area of plat 8.1016 acres (See Area Tabulation)
 2. Number of lots included in plat 43.
 3. Public water supply and public sewage disposal facilities shall be provided by the Joppatowns Utilities Corporation, Inc.
 4. The right to construct, operate & maintain water and sewer systems within the right of way of the streets, roads, and Utility Easements shown on this plat is reserved for Joppatowns Utilities Corporation or its successors or assigns along with the right of ingress, egress and regress thereto.
 5. The right to construct, operate & maintain (1) Primary underground electrical distribution lines within the 6-foot Utility Easements located adjacent to the street right of way lines as shown on this plat, and (2) Secondary underground service lines within the portions of the lots shown on this plat lying between the street right of way lines and the fronts of the buildings as built on the various lots, and (3) 6"x12" Transformer Pads on each lot if needed as shown on Typical Lot Plan shown hereon is reserved for the Baltimore Gas & Electric Co., its successors or assigns.

CURVE DATA

NO	RADIUS	ARC	TAN	LONG CHORD	LONG CHORD BEARING
89A	725.00	07°53'00"	99.75	49.92	5 09°56'00" E
89B	665.00	08°17'00"	49.72	24.87	5 89°44'21" W
89C	175.00	89°07'00"	272.20	245.98	N 47°55'24" W
89D	675.00	07°58'00"	92.87	46.51	52.00 N 00°54'00" W
89E	665.00	13°42'00"	159.01	72.85	158.43 S 70°47'10" W
89F	28.00	118°05'50"	50.64	40.00	42.42 N 58°07'55" W
89H	1695.00	07°08'20"	81.50	16.25	32.50 N 64°30'20" E

- LEGEND**
- 90 Block Number
 - 16 Lot Number
 - 89 House Number
 - 90B Curve Number
 - B.G. & E. Co. Baltimore Gas & Electric Company

ENGINEERS
 WHITMAN REQUARDT & ASSOCIATES
 1304 St. Paul St.
 Baltimore 2, Maryland

KENNETH A. MCCORD
 Registered Land Surveyor
 NO. 1974

NOTE:
 Lots 1 thru 26 of Block 89 and
 Lots 24 thru 31 of Block 90 and
 Lots 38 thru 42 of Block 88 are
 designated as "Detached Dwelling Lots."

APPROVED: *[Signature]* DATE: 4/11/73
 COUNTY HEALTH OFFICER

APPROVED: *[Signature]* DATE: 5/28/73
 DIRECTOR OF PUBLIC WORKS

APPROVED: *[Signature]* DATE: 5/18/73
 DIRECTOR OF PARKS AND RECREATION

APPROVED: *[Signature]* DATE: 5/11/73
 DIRECTOR OF PLANNING

APPROVED: *[Signature]* DATE: 5/21/73
 COUNTY ATTORNEY

APPROVED: HARFORD COUNTY, MARYLAND

RECORDING STAMP

The streets, roads, open spaces and public sites shown hereon, and the mention thereof in deeds or references in deeds to this plat are for the purpose of description only, and such mention or references are neither intended to create a dedication of the same to public use or to constitute a grant of an easement or right of any kind in the same; the fee simple title to the land so shown is expressly reserved in the present owner shown on this plat, their successors and assigns.

Not more than one principal building will be permitted on any lot, and no lot will be subdivided to produce a building site of less area or width than the minimum required by subdivision regulations or the County Health Officer.

By: _____ By: _____

RUMSEY ISLAND PART SIXTEEN

ELECTION DISTRICT NO. 1 HARFORD COUNTY, MARYLAND

A DEVELOPMENT BY
 ORIOLE SPRINGDALE INC.
 749 Equitable Bldg.
 Baltimore, Md. 21202

Date: March 26 1972 Scale: 1"=100'