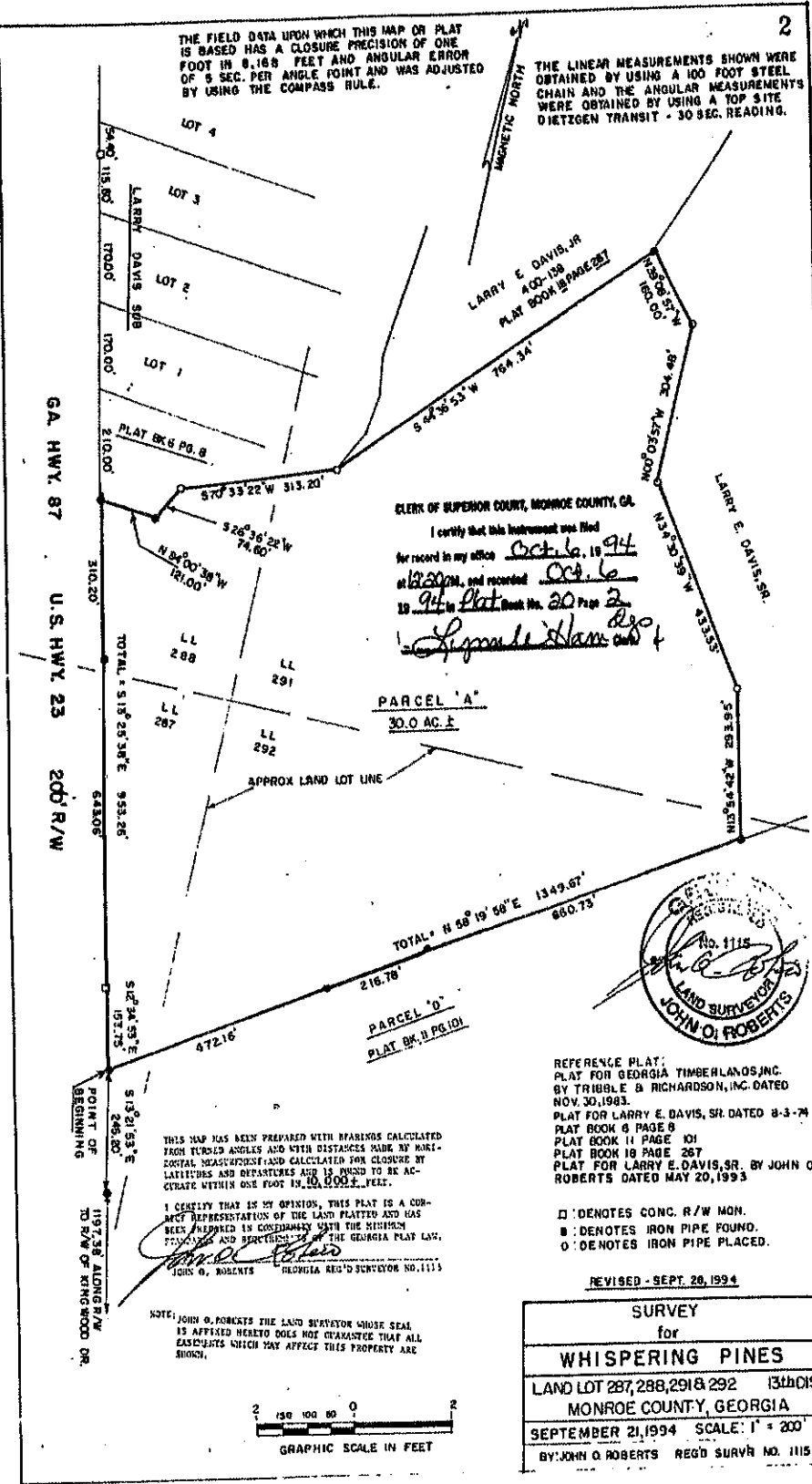
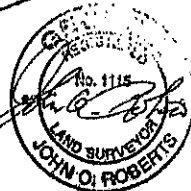


THE FIELD DATA UPON WHICH THIS MAP OR PLAT IS BASED HAS A CLOSURE PRECISION OF ONE FOOT IN 6,168 FEET AND ANGULAR ERROR OF 8 SEC. PER ANGLE POINT AND WAS ADJUSTED BY USING THE COMPASS RULE.

THE LINEAR MEASUREMENTS SHOWN WERE OBTAINED BY USING A 100 FOOT STEEL CHAIN AND THE ANGULAR MEASUREMENTS WERE OBTAINED BY USING A TOP SITE DIETZGEN TRANSIT - 30 SEC. READING.



CLERK OF SUPERIOR COURT, MONROE COUNTY, GA.
I certify that this instrument was filed for record in my office October 19 94 at 12:00 PM, and recorded Oct. 6 94 in Plat Book No. 20 Page 2
Signature



REFERENCE PLAT:
PLAT FOR GEORGIA TIMBERLANDS, INC. BY TRIBBLE & RICHARDSON, INC. DATED NOV. 30, 1983.
PLAT FOR LARRY E. DAVIS, SR. DATED 8-3-74 PLAT BOOK 9 PAGE 8
PLAT BOOK 11 PAGE 101
PLAT BOOK 18 PAGE 267
PLAT FOR LARRY E. DAVIS, SR. BY JOHN O. ROBERTS DATED MAY 20, 1993

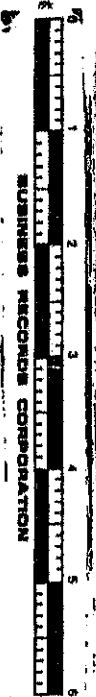
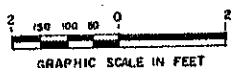
□ DENOTES CONC. R/W MON.
■ DENOTES IRON PIPE FOUND.
○ DENOTES IRON PIPE PLACED.

REVISED - SEPT. 28, 1994

SURVEY	
for	
WHISPERING PINES	
LAND LOT 287, 288, 291 & 292 13th DIST	
MONROE COUNTY, GEORGIA	
SEPTEMBER 21, 1994 SCALE: 1" = 200'	
BY: JOHN O. ROBERTS REG'D SURVR NO. 1115	

THIS MAP HAS BEEN PREPARED WITH BEARINGS CALCULATED FROM TURNED ANGLES AND WITH DISTANCES MADE BY HORIZONTAL MEASUREMENTS AND CALCULATED FOR CLOSURE BY LATITUDES AND DEPARTURES AND IS HELD TO BE ACCURATE WITHIN ONE FOOT IN 10,000 ± FEET.
I CERTIFY THAT IN MY OPINION, THIS PLAT IS A CORRECT REPRESENTATION OF THE LAST PLATTED AND HAS BEEN PREPARED IN CONFORMANCE WITH THE MINIMUM STANDARDS AND REQUIREMENTS OF THE GEORGIA PLAT LAW.
Signature
JOHN O. ROBERTS GEORGIA REG'D SURVEYOR NO. 1115

NOTE: JOHN O. ROBERTS THE LAND SURVEYOR WHOSE SEAL IS AFFIXED HERETO DOES NOT GUARANTEE THAT ALL ENCUMBRANCES WHICH MAY AFFECT THIS PROPERTY ARE SHOWN.



BUSINESS RECOVERY CORPORATION