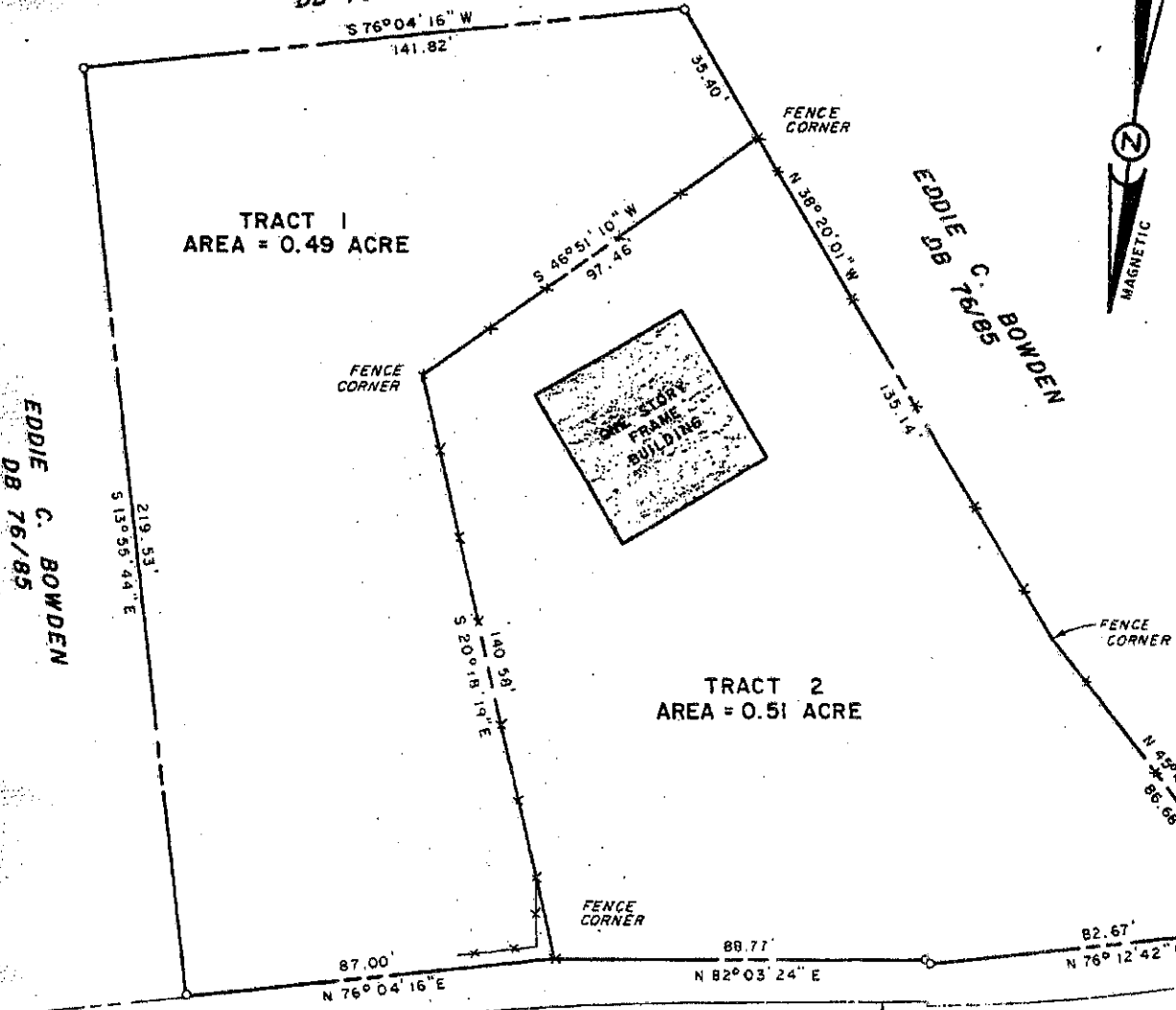


EDDIE C. BOWDEN  
DB 76/85

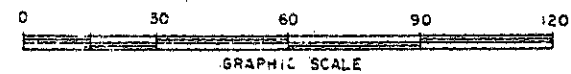
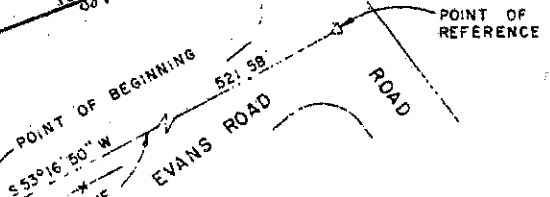


**LEGEND**

PROPERTY LINE	-----
IRON MARKER FOUND	●
IRON MARKER SET	○
CONCRETE MONUMENT FOUND	■
CONCRETE MONUMENT SET	□
LAND LOT LINE	-----
BUILDING SETBACK LINE	-----
EASEMENT LINE	-----
FENCE	×××



MONROE COUNTY, GEORGIA  
CLERK'S OFFICE, SUPERIOR COURT  
I certify that this instrument was filed for record in my  
office July 10 1986 at 2:00  
O'clock P. M. and recorded July 10  
1986 in Plat  
Book No. 13 Page No. 45  
Peggy S. Jackson RUMBLE  
Clk



**NOTES**

- 1) TOTAL ACREAGE IS 1.00 ACRE.
- 2) POINT OF REFERENCE - NAIL & CAP IN THE CENTERLINE OF THE INTERSECTION OF RUMBLE ROAD AND EVANS ROAD.
- 3) TRIBBLE & RICHARDSON, INC. AND THE LAND SURVEYOR

**CERTIFICATION**

The field data upon which this map or plat is based has a closure precision of one foot in 14,057 feet and angular error of 19" per angle point and was adjusted using the CRANDALL rule.  
This plat has been calculated for closure and is found to be accurate within one foot in 63,674 feet.  
The linear and angular measurements shown on this plat were obtained by using a LIETZ

PROPERTY SURVEY  
for  
**MONROE COUNTY, GEORGIA**  
A POLITICAL SUBDIVISION  
OF THE STATE OF GEORGIA  
"SMARR COMMUNITY HOUSE"  
LAND LOT 18 13TH LAND DISTRICT