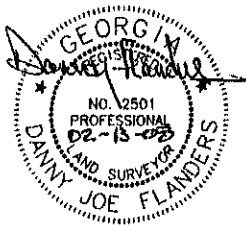


303 Claxton

IN MY OPINION, THIS PLAT IS A CORRECT REPRESENTATION OF THE LAND PLATTED AND HAS BEEN PREPARED IN CONFORMITY WITH THE MINIMUM STANDARDS.

THE FIELD DATA UPON WHICH THIS PLAT IS BASED HAS A CLOSURE PRECISION OF ONE FOOT IN 10,443 FEET AND AN ANGULAR ERROR OF 5.0" PER ANGLE POINT AND WAS ADJUSTED USING THE CRANDALL RULE. THIS PLAT HAS BEEN CALCULATED FOR CLOSURE AND IS FOUND TO BE ACCURATE WITHIN ONE FOOT IN 68,822 FEET. THE LINEAR AND ANGULAR MEASUREMENTS SHOWN ON THIS PLAT WERE OBTAINED BY USING A TOPCON GTS-825A TOTAL STATION AND AN EXPLORER DATA COLLECTOR.

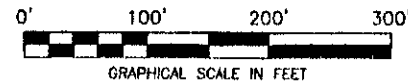
WARNING: OFFICIAL AUTHORIZED DRAWINGS ARE BLUE-LINE PRINTS WHICH CONTAIN A BLACK OR BLUE SEAL WITH A BLACK BALL POINT INK SIGNATURE OF THE ENGINEER OR SURVEYOR. UNAUTHORIZED COPIES MAY CONTAIN FRAUDULENT, INCORRECT, ERRONEOUS, OR MISLEADING INFORMATION OR OMIT IMPORTANT AND RELEVANT INFORMATION. DO NOT USE OR RELY ON UNAUTHORIZED COPIES. THE SEAL, SIGNATURE, AND CERTIFICATION ARE HEREBY REVOKED OR OTHERWISE VOID ON ALL UNAUTHORIZED COPIES. THIS SURVEY HAS BEEN PREPARED WITHOUT THE BENEFIT OF A CURRENT TITLE INSPECTION. EASEMENTS OR OTHER ENCUMBRANCES MAY EXIST ON PUBLIC RECORD BUT NOT SHOWN HERON. FLANDERS & ASSOCIATES, INC. AND THE LAND SURVEYOR OR ENGINEER WHOSE NAME IS AFFIXED HEREON DOES NOT CERTIFY THAT ALL RECORDED AND/OR UNRECORDED EASEMENTS WHICH MAY AFFECT THIS PROPERTY ARE SHOWN.



State of Georgia, Laurens County
CLERK'S OFFICE, SUPERIOR COURT

Filed April 11, 2008
Recorded April 11, 2008
At 9:05 O'clock P.M.
In Book 9 Page 213 B

Allen Adams
Clerk of Superior Court

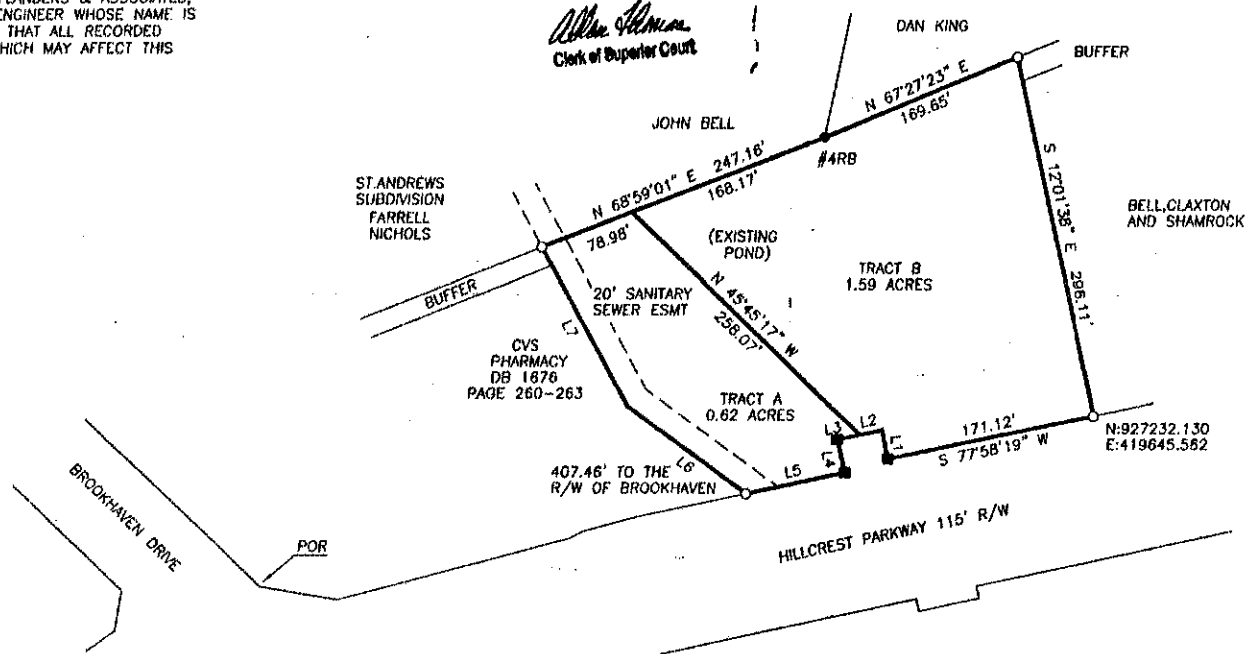


| LINE | BEARING | DISTANCE |
|------|---------------|----------|
| L1 | N 12°01'35" W | 24.24' |
| L2 | S 77°58'19" W | 18.50' |
| L3 | S 77°58'19" W | 18.50' |
| L4 | S 12°01'43" E | 27.86' |
| L5 | S 77°58'19" W | 82.29' |
| L6 | N 53°25'51" W | 120.16' |
| L7 | N 28°22'00" W | 145.91' |



LEGEND

- IRON PIN FOUND
- #5 REBAR WITH YELLOW KAP SET
- 4RB #4 STEEL REBAR
- 5RB #5 STEEL REBAR
- C/L CENTERLINE
- DB DEED BOOK
- FENCE
- GMD GEORGIA MILITIA DISTRICT
- LL LAND LOT
- LLL APPROXIMATE LL LINE
- NOT TO SCALE
- N/F NOW OR FORMERLY
- PI PIPE
- P/L PROPERTY LINE
- RB STEEL REBAR
- R/W RIGHT-OF-WAY
- ROR POINT OF REFERENCE
- DE DRAINAGE EASEMENT



James Flanders, PE RLS



Flanders & Associates, Inc.

ENGINEERS & LAND SURVEYORS
P. O. BOX 1981
DUBLIN, GEORGIA 31040
PHONE 478-274-9298

Patrick Flanders, PE RLS

THIS PLAT AND THE COORDINATES SHOWN ARE BASED UPON THE GEORGIA STATE PLANE COORDINATE SYSTEM NAD-83 EAST ZONE. (1994 HARN ADJUSTMENT) A SCALE FACTOR OF 0.9999600 WAS USED. ALL LENGTHS ARE REDUCED TO SEA LEVEL.

SURVEY FOR
Bell, Claxton, and Shamrock

Joint Venture

342 GMD LAURENS COUNTY GEORGIA
LAND LOT 214 of DISTRICT 1
SCALE: 1"=100' 02-13-2008

FILE: CDBROOK.ZIP FB: JETT DISK: IOMEGA B