

14326 FILED Book 90 PAGE 529 (1 of 4)  
 CLERK'S OFFICE  
 02 MAY - 2 AM '18  
 CLERK OF SUPERIOR COURT OF BIBB COUNTY, GEORGIA

| NUMBER | LL       | Is       | Do       | Do       | Ch            | T      | R       | LC     | E      | M     |       |
|--------|----------|----------|----------|----------|---------------|--------|---------|--------|--------|-------|-------|
| 01     | 0429'16" | 0429'16" | 0933'44" | 0933'44" | S 29°57'24" E | 40.38  | 1039.02 | 80.07  | 60.89  | 0.79  | 0.79  |
| 02     | 0208'47" | 0208'47" | 0934'24" | 0934'24" | S 27°07'52" E | 18.17  | 871.00  | 33.24  | 28.34  | 0.17  | 0.17  |
| 03     | 1148'48" | 1148'48" | 0933'48" | 0933'48" | S 27°49'14" E | 108.37 | 1030.00 | 212.37 | 212.00 | 0.50  | 0.57  |
| 04     | 1408'28" | 1408'28" | 0934'24" | 0934'24" | S 28°29'29" E | 120.31 | 820.00  | 239.38 | 238.79 | 7.43  | 7.38  |
| 05     | 0719'09" | 0719'09" | 1721'44" | 1729'48" | S 29°14'49" E | 219.80 | 330.00  | 307.81 | 305.85 | 66.50 | 35.35 |
| 06     | 0719'09" | 0719'09" | 1713'14" | 1720'36" | S 29°14'49" E | 179.84 | 870.00  | 377.39 | 359.38 | 64.11 | 45.28 |
| 07     | 2831'02" | 2831'02" | 0934'24" | 0934'24" | N 79°09'14" E | 292.57 | 870.00  | 389.07 | 494.42 | 33.13 | 32.03 |
| 08     | 2931'05" | 2931'05" | 0933'44" | 0933'44" | N 79°09'14" E | 271.48 | 1030.00 | 630.89 | 626.04 | 38.18 | 34.02 |

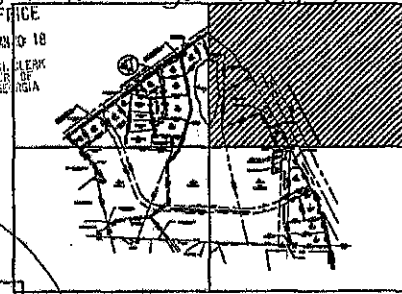
| NUMBER | DISTANCE | NUMBER | DISTANCE |
|--------|----------|--------|----------|
| L1     | 173.63   | L18    | 164.79   |
| L2     | 173.63   | L19    | 164.79   |
| L3     | 49.81    | L20    | 105.67   |
| L4     | 107.39   | L21    | 107.39   |
| L5     | 107.39   | L22    | 107.39   |
| L6     | 118.40   | L23    | 118.40   |
| L7     | 174.27   | L24    | 174.27   |
| L8     | 129.92   | L25    | 129.92   |
| L9     | 79.29    | L26    | 79.29    |
| L10    | 125.81   | L27    | 125.81   |
| L11    | 125.81   | L28    | 125.81   |
| L12    | 125.81   | L29    | 125.81   |
| L13    | 87.28    | L30    | 87.28    |
| L14    | 70.67    | L31    | 70.67    |
| L15    | 128.17   | L32    | 128.17   |
| L16    | 128.17   | L33    | 128.17   |
| L17    | 128.17   | L34    | 128.17   |
| L18    | 128.17   | L35    | 128.17   |
| L19    | 128.17   | L36    | 128.17   |
| L20    | 128.17   | L37    | 128.17   |
| L21    | 128.17   | L38    | 128.17   |
| L22    | 128.17   | L39    | 128.17   |
| L23    | 128.17   | L40    | 128.17   |
| L24    | 128.17   | L41    | 128.17   |
| L25    | 128.17   | L42    | 128.17   |
| L26    | 128.17   | L43    | 128.17   |
| L27    | 128.17   | L44    | 128.17   |
| L28    | 128.17   | L45    | 128.17   |
| L29    | 128.17   | L46    | 128.17   |
| L30    | 128.17   | L47    | 128.17   |
| L31    | 128.17   | L48    | 128.17   |
| L32    | 128.17   | L49    | 128.17   |
| L33    | 128.17   | L50    | 128.17   |

**OWNER'S CERTIFICATION**  
 STATE OF GEORGIA, COUNTY OF BIBB  
 I, THE UNDERSIGNED CERTIFY THAT I AM THE OWNER OF THE LAND SHOWN ON THIS PLAT AND ACKNOWLEDGE THIS PLAT AND ALLOTMENT TO BE HIS FREE ACT AND DEED AND DEDICATES TO PUBLIC USE FOREVER ALL THE AREAS SHOWN OR INDICATED ON THIS PLAT AS STREETS, ALLEYS, EASEMENTS, OR PARKS.

4/25/18 *Joseph P. ...*  
 DATE TOWNERS SIGNATURE

APPROVED BY MACON-BIBB COUNTY FIRE DEPARTMENT  
 DATE FIRE CHIEF

APPROVED BY MACON-BIBB COUNTY HEALTH DEPARTMENT  
 4/24/18 *Conward ...*  
 DATE DIRECTOR



MAP KEY

**COUNTY ENGINEER'S CERTIFICATION**  
 I CERTIFY THAT THE FINAL PLAT LAYOUT MEETS THE PLATTING REQUIREMENTS OF THE BIBB COUNTY ENGINEERING DEPARTMENT. BIBB COUNTY DOES NOT, BY THIS APPROVAL, ACCEPT THE DEDICATION, IF ANY, OF DRAINAGE EASEMENTS AND ASSUMES NO RESPONSIBILITY FOR WEIR MAINTENANCE.

4/25/18 *Joseph P. ...*  
 DATE ENGINEER

APPROVED BY MACON-BIBB COUNTY PLANNING AND ZONING COMMISSION  
 5/1/18 *Conward ...*  
 DATE ZONING ENFORCEMENT OFFICER

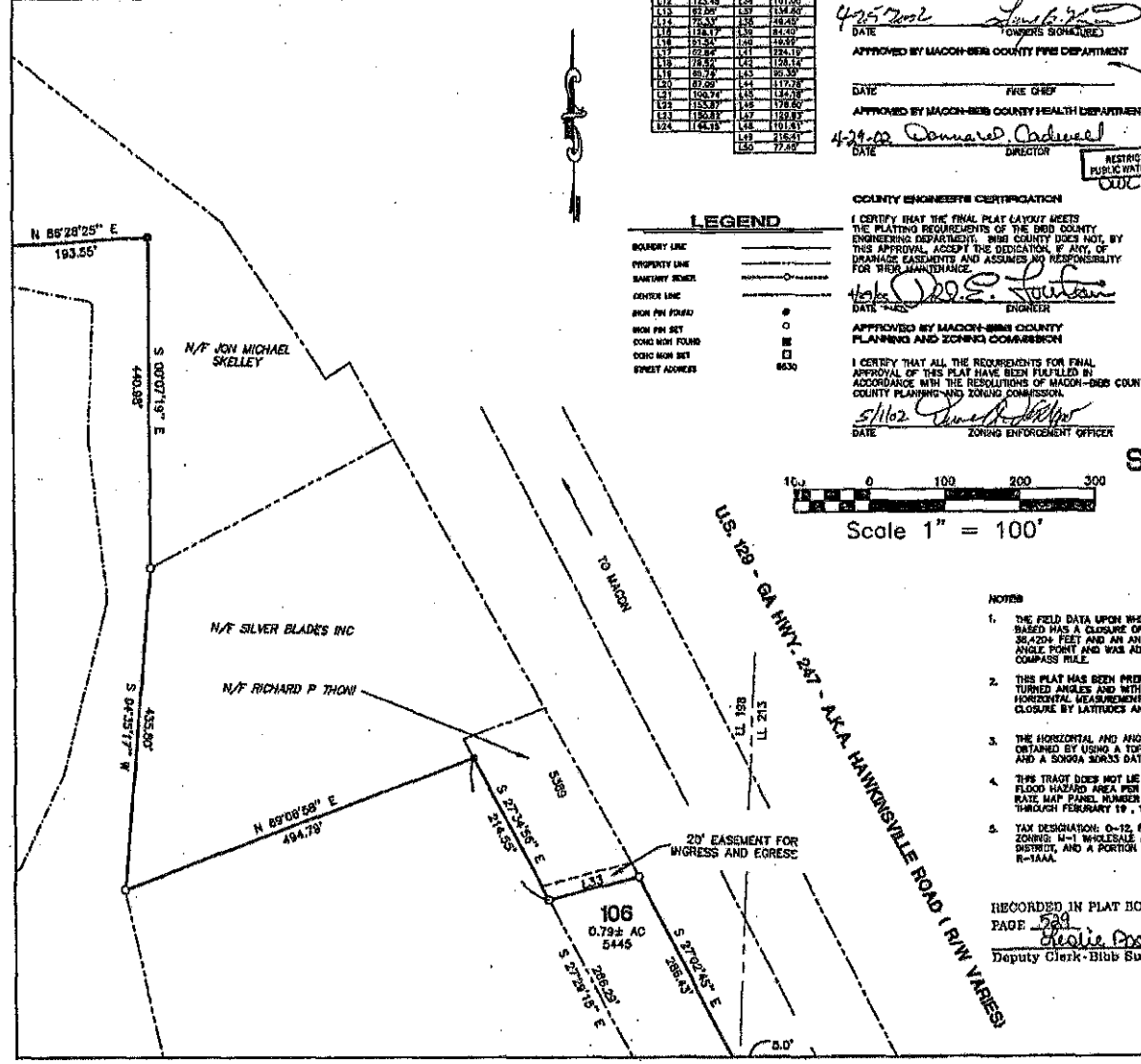
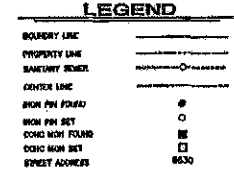
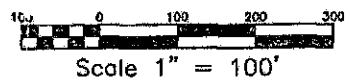
**SURVEYOR'S CERTIFICATION**  
 I CERTIFY THAT IN MY OPINION, THIS PLAT IS A CORRECT REPRESENTATION OF THE LAND PLATED AND HAS BEEN PREPARED IN CONFORMITY WITH THE MINIMUM STANDARDS AND REQUIREMENTS OF THE GEORGIA PLAT LAW.

APRIL 8, 2002 GA. REG. LAND SURVEYOR NO. 1483



APPROVAL SUBJECT TO INSTALLATION OF PROPER WATER MAINS AND FIRE HYDRANT: MACON-BIBB COUNTY FIRE DEPARTMENT  
 DATE 4/24/18 *Conward ...*

**SOUTHLAKE BUSINESS PARK SUBDIVISION**  
 LAND LOT 198 AND 213 4th LAND DISTRICT  
 BIBB COUNTY, GEORGIA



- NOTES**
- THE FIELD DATA UPON WHICH THIS MAP OR PLAT IS BASED WAS A CLOSURE OR PROVISION OF ONE FOOT IN SEASON FEET AND AN ANGULAR ERROR OF 01 SEC PER ANGLE POINT AND WAS ADJUSTED BY USING THE COMPASS RULE.
  - THIS PLAT HAS BEEN PREPARED WITH BEARINGS FROM TURNED ANGLES AND WITH DISTANCES MADE BY HORIZONTAL MEASUREMENTS AND CALCULATED FOR CLOSURE BY LATITUDES AND DEPARTURES.
  - THE HORIZONTAL AND ANGULAR MEASUREMENTS WERE OBTAINED BY USING A TOPCON GTS 3000 TOTAL STATION AND A SONOTA 3000S DATA COLLECTOR.
  - THIS TRACT DOES NOT LIE WITHIN A 100 YEAR SPECIAL FLOOD HAZARD AREA PER COMMUNITY FLOOD INSURANCE RATE MAP PANEL NUMBER 13001 002 E, REVISED THROUGH FEBRUARY 19, 1997.
  - TAX DESIGNATION: 0-12, R-12 ZONING: M-1 WHOLESALE AND LIGHT INDUSTRIAL DISTRICT, AND A PORTION OF LOTS 29 30 AND 31 R-1AAA.
  - BUILDING SETBACKS:  
 FRONT YARD - 50'  
 REAR YARD - 50'  
 SIDE YARD - 50'  
 REAR YARD - 30'

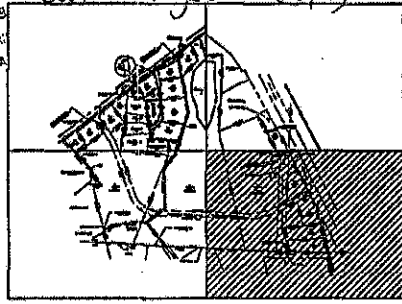
*Walter ...*  
 Surveyor

RECORDED IN PLAT BOOK 90  
 PAGE 529  
*Healie ...*  
 Deputy Clerk-Bibb Supl-Court

- PREVIOUS PLATS**  
 MAP FOR LARRY B. HORNBY BY COLLIS & CO. DATED JANUARY 26, 1994.  
 MAP FOR JAMES ALBERT VANN SR. BY JAMES A. BRIDEN JR. DATED JANUARY 28, 1991.
- PLAT BOOK 18 PAGE 803
  - PLAT BOOK 21 PAGE 124
  - PLAT BOOK 318 PAGE 107
  - PLAT BOOK 32 PAGE 23
  - PLAT BOOK 47 PAGE 119
  - PLAT BOOK 63 PAGE 33
  - PLAT BOOK 88 PAGE 84
  - PLAT BOOK 87 PAGE 62
  - PLAT BOOK 78 PAGE 17
  - PLAT BOOK 89 PAGE 88

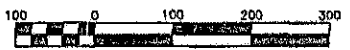
14327 FILED  
CLERK'S OFFICE  
02 MAY -2 AM '93  
CLAUDE HALL, SR., CLERK  
SUPERIOR COURT OF  
DEKALB COUNTY, GEORGIA

BOOK 90 PAGE 530 (204)

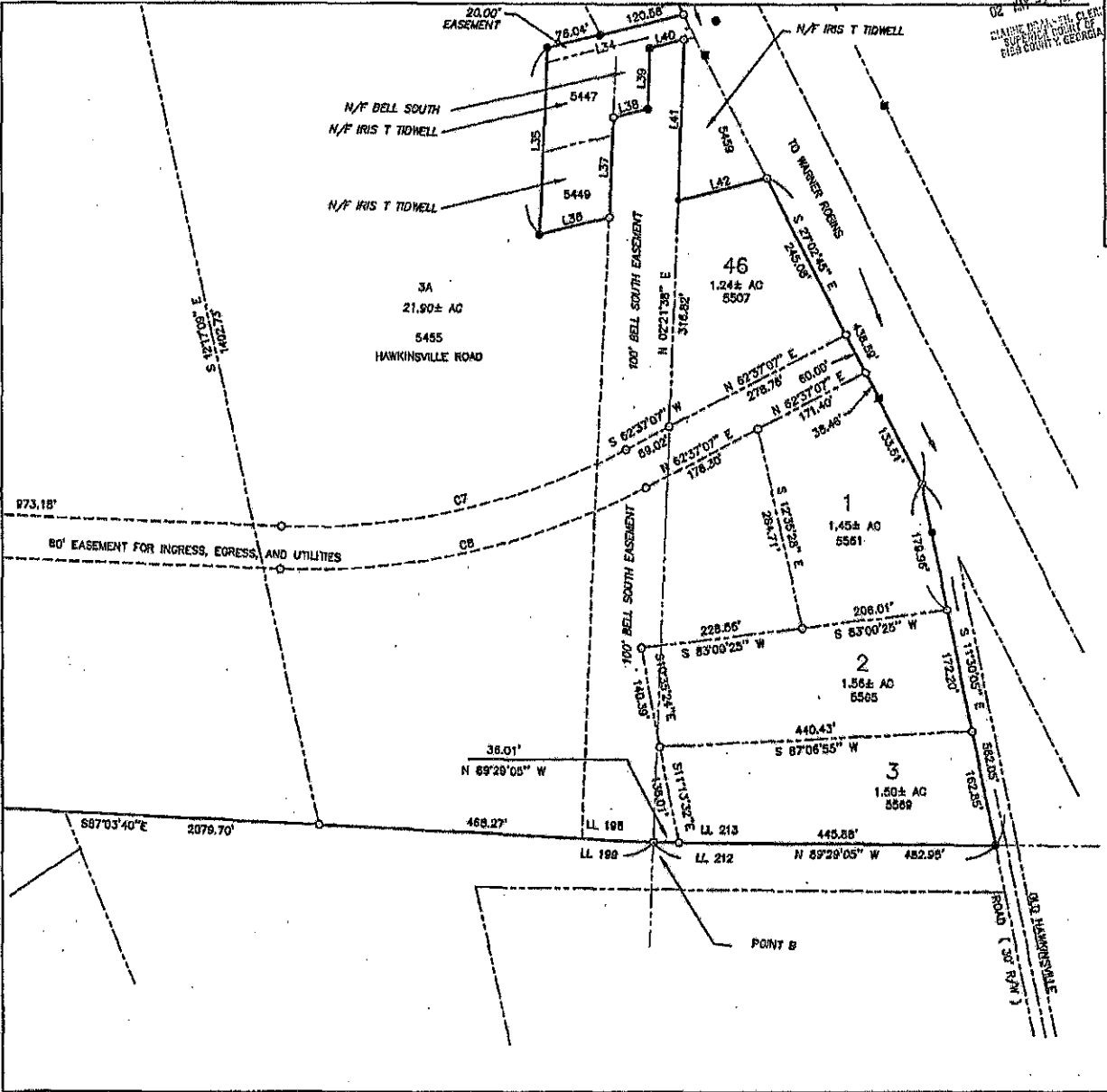


MAP KEY

RECORDED IN PLAT BOOK 90  
PAGE 530  
Cherie Ross  
Deputy Clerk - DeKalb Sup. Court



Scale 1" = 100'



SOUTHLAKE BUSINESS PARK

SUBDIVISION SHEET 2 OF 4

DELOACH ENGINEERING CONSULTANTS MACON, GEORGIA PHONE (478) 746-6725

90/530