

George G., LTD. Farm



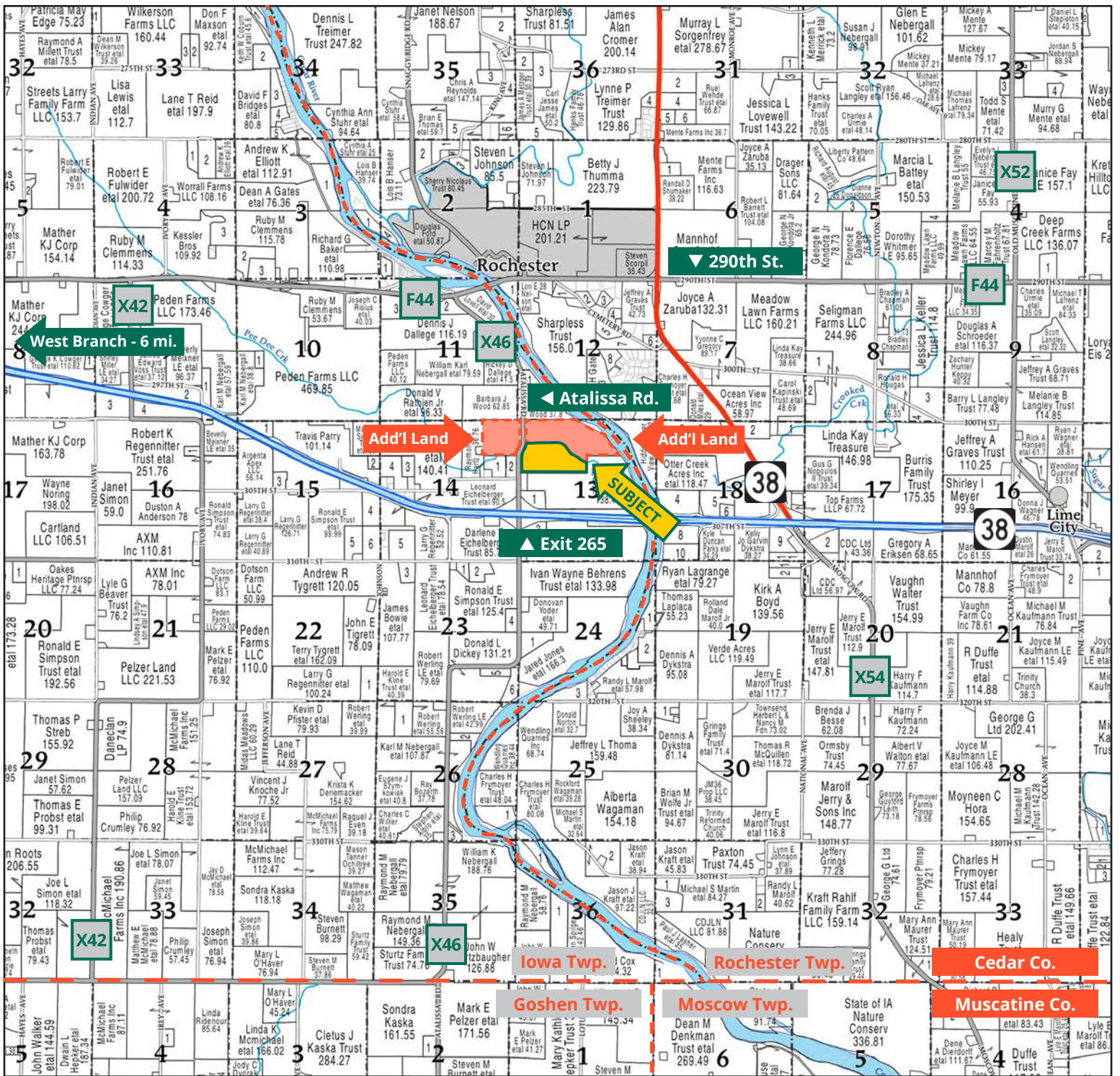
RYAN KAY, AFM, ALC
Licensed Salesperson in IA
319.826.5715
RyanK@Hertz.ag



TROY LOUWAGIE, ALC
Licensed Broker in IA & IL
319.721.4068
TroyL@Hertz.ag

319.895.8858 | 102 Palisades Road
Mount Vernon, IA 52314-0050 | www.Hertz.ag

55.15 Acres, m/I
Cedar County, IA



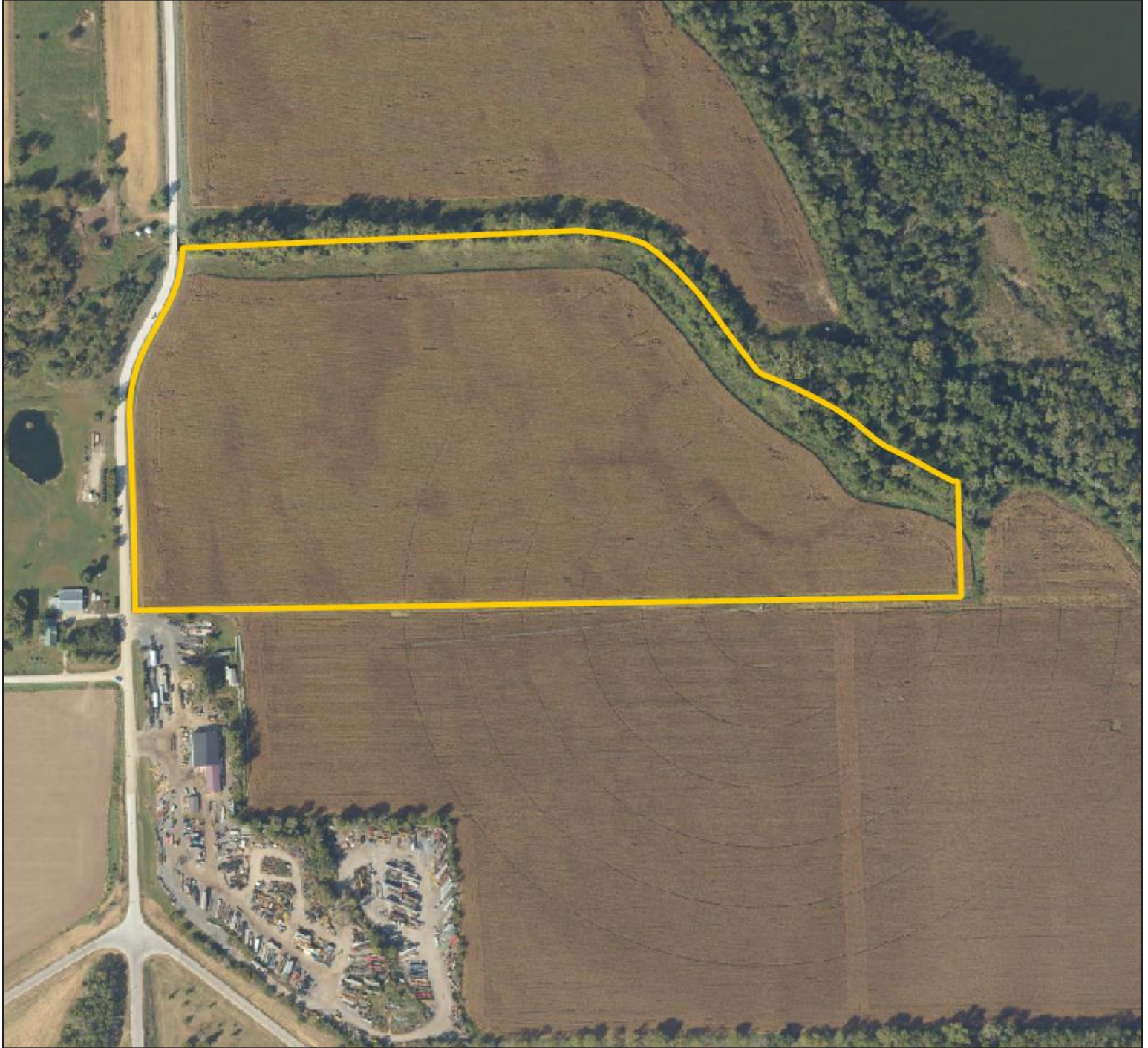
Map reproduced with permission of Farm & Home Publishers, Ltd.

319.895.8858 | 102 Palisades Road | Mount Vernon, IA 52314-0050 | www.Hertz.org

RYAN T. KAY, AFM, ALC
 319.826.5715
 RyanK@Hertz.org

TROY LOUWAGIE, ALC
 319.721.4068
 TroyL@Hertz.org

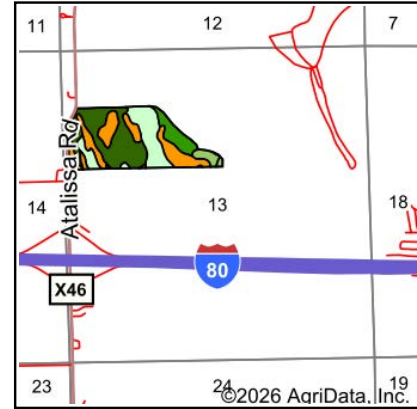
FSA/Eff. Crop Acres: 48.60 | CRP Acres: 4.00 | Soil Productivity: 71.60 CSR2



319.895.8858 | 102 Palisades Road | Mount Vernon, IA 52314-0050 | www.Hertz.ag

RYAN T. KAY, AFM, ALC
319.826.5715
RyanK@Hertz.ag

TROY LOUWAGIE, ALC
319.721.4068
TroyL@Hertz.ag



State: **Iowa**
 County: **Cedar**
 Location: **13-79N-3W**
 Township: **Iowa**
 Acres: **48.6**
 Date: **6/3/2026**



Soils data provided by USDA and NRCS.

Area Symbol: IA031, Soil Area Version: 31

Code	Soil Description	Acres	Percent of field	CSR2 Legend	Non-Irr Class *c	Irr Class *c	CSR2**	
977	Richwood silt loam, 0 to 2 percent slopes	16.87	34.8%		I		99	
177	Saude loam, 0 to 2 percent slopes	11.38	23.4%		IIIs		60	
8041B	Sparta loamy sand, terrace, 2 to 5 percent slopes, rarely flooded	10.75	22.1%		IVs	IIe	43	
220	Nodaway silt loam, 0 to 2 percent slopes, occasionally flooded	4.67	9.6%		IIw	IIw	82	
826	Rowley silt loam, 0 to 2 percent slopes	1.72	3.5%		Is		74	
110C	Lamont fine sandy loam, 2 to 9 percent slopes	1.48	3.0%		IIe		47	
352C2	Whittier silt loam, 5 to 9 percent slopes, moderately eroded	1.25	2.6%		IIe		42	
136	Ankeny fine sandy loam, 0 to 2 percent slopes, rarely flooded	0.30	0.6%		IIs		78	
352B	Whittier silt loam, 2 to 5 percent slopes	0.18	0.4%		IIe		52	
Weighted Average						2.12	*-	71.6

**IA has updated the CSR values for each county to CSR2.

*c: Using Capabilities Class Dominant Condition Aggregation Method

*- Irr Class weighted average cannot be calculated on the current soils data due to missing data.

Location

From West Branch: 10 miles east on I-80. At Exit 265, ½ mile north on Atalissa Rd. The property is east of the road.

Simple Legal

That part of the NW¼ in Section 13, Township 79 North, Range 3 West of the 5th P.M., Cedar County, Iowa. *Final abstract/title documents to govern legal description.*

Price & Terms

- \$579,075.00
- \$10,500/acre
- 10% down upon acceptance of offer, balance due in cash at closing.

Possession

Negotiable.

Real Estate Tax

Taxes Payable 2025-2026: \$1,762.00*

Net Taxable Acres: 55.15*

Tax per Net Taxable Acre: \$31.95*

**Taxes estimated pending tax parcel split. Cedar County Treasurer/Assessor will determine final tax figures.*

Lease Status

Farm is leased for the 2026 crop year.

FSA Data

Farm 1000, Part of Tract 1387

FSA/Eff. Crop Acres: 48.60

CRP Acres: 4.00

Corn Base Acres: 37.84*

Corn PLC Yield: 147 Bu.

Bean Base Acres: 9.75*

Bean PLC Yield: 53 Bu.

**Acres are estimated pending reconstitution of farm by the Cedar County FSA office.*

CRP Contracts

There are 4.00 acres enrolled in a CP-21 contract that pays \$1,253.00 annually and expires September 30, 2031.

Soil Types/Productivity

Primary soils are Richwood, Saude and Sparta. CSR2 on the FSA/Eff. crop acres is 71.60. See soil map for detail.

Mineral Rights

All mineral rights owned by the Seller, if any, will be transferred to the Buyer(s).

Land Description

The land is level.

Drainage

Drainage is natural.

Buildings/Improvements

None.

Water & Well Information

None.

Irrigation Pivot

The irrigation pivot belongs to the neighboring landowner. The pivot and/or rights for use of the pivot are not included with the sale of this property.

Comments

This is a productive Cedar County farm.

Additional Land for Sale

Seller has two additional tracts of land for sale located north and west of this property. See Additional Land Aerial Photo.



The information gathered for this brochure is from sources deemed reliable, but cannot be guaranteed by Hertz Real Estate Services or its staff. All acres are considered more or less, unless otherwise stated. All property boundaries are approximate. Soil productivity ratings are based on the information currently available in the USDA/NRCS soil survey database. Those numbers are subject to change on an annual basis.

319.895.8858 | 102 Palisades Road | Mount Vernon, IA 52314-0050 | www.Hertz.ag

RYAN T. KAY, AFM, ALC

319.826.5715

RyanK@Hertz.ag

TROY LOUWAGIE, ALC

319.721.4068

TroyL@Hertz.ag

West Side Looking East



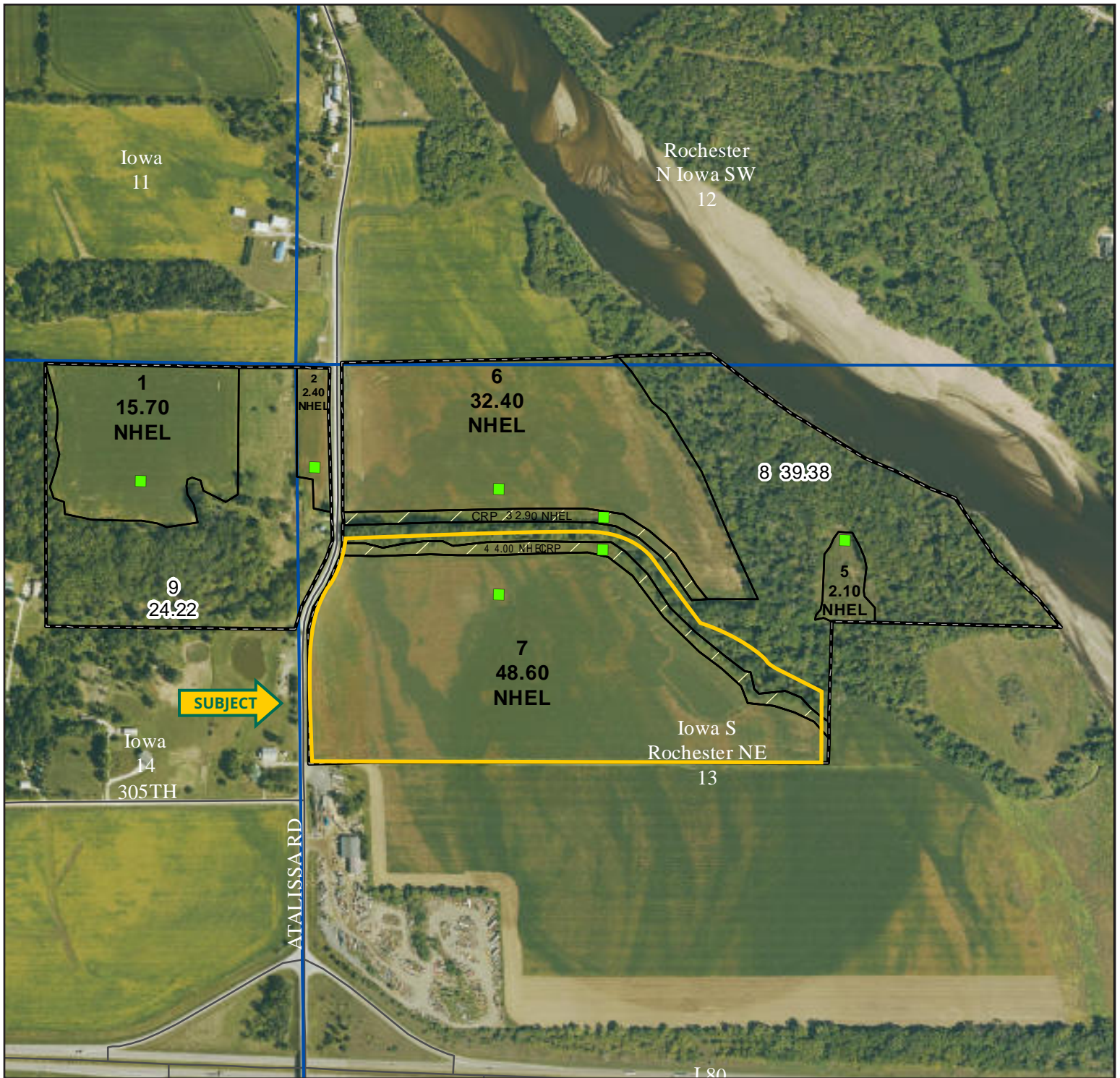
Southeast Corner Looking Northwest



319.895.8858 | 102 Palisades Road | Mount Vernon, IA 52314-0050 | www.Hertz.ag

RYAN T. KAY, AFM, ALC
319.826.5715
RyanK@Hertz.ag

TROY LOUWAGIE, ALC
319.721.4068
TroyL@Hertz.ag



319.895.8858 | 102 Palisades Road | Mount Vernon, IA 52314-0050 | www.Hertz.ag

RYAN T. KAY, AFM, ALC
319.826.5715
RyanK@Hertz.ag

TROY LOUWAGIE, ALC
319.721.4068
TroyL@Hertz.ag

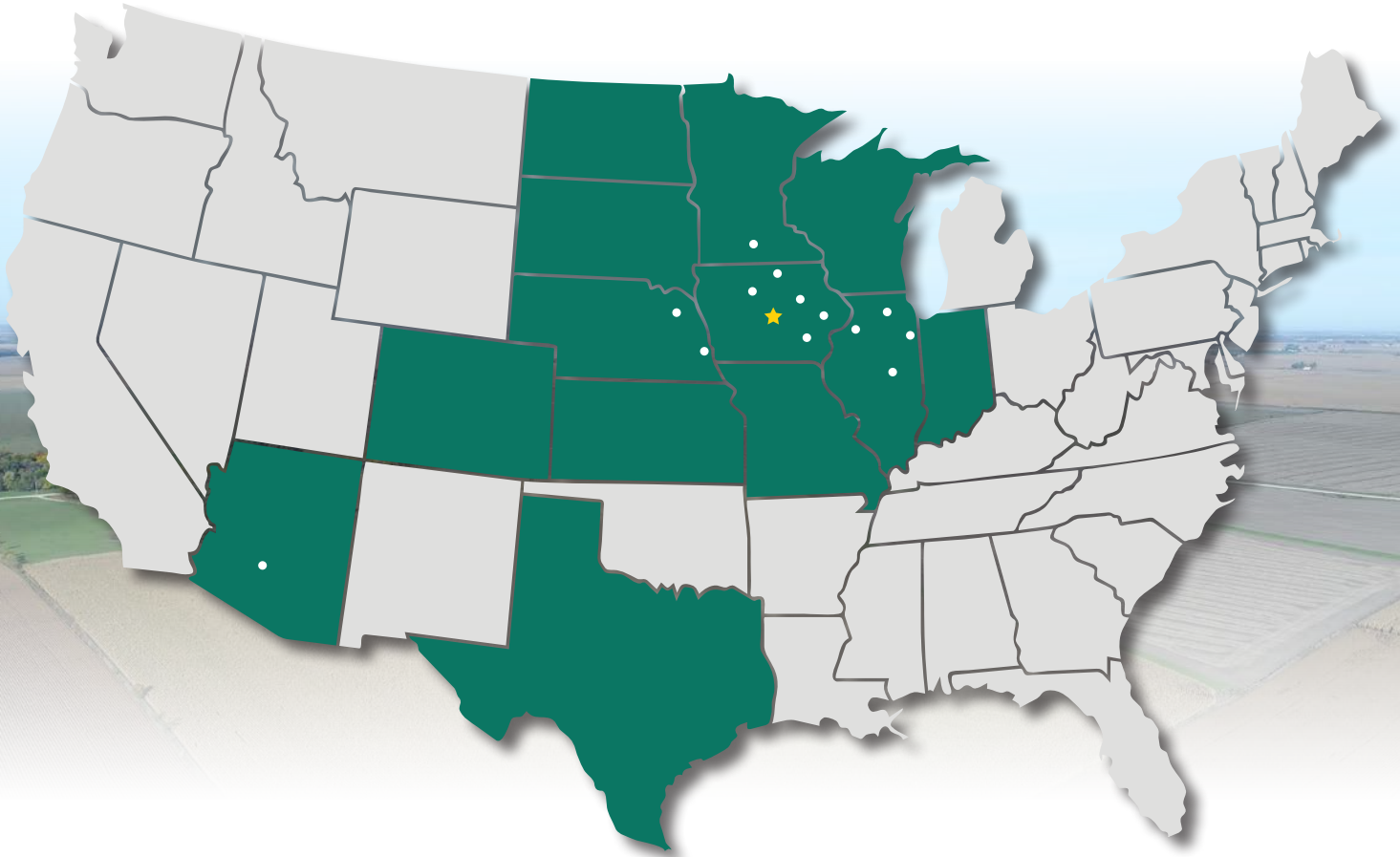


319.895.8858 | 102 Palisades Road | Mount Vernon, IA 52314-0050 | www.Hertz.ag

RYAN T. KAY, AFM, ALC
319.826.5715
RyanK@Hertz.ag

TROY LOUWAGIE, ALC
319.721.4068
TroyL@Hertz.ag

MAKE THE MOST OF YOUR FARMLAND INVESTMENT



Real Estate Sales and Auctions
Professional Buyer Representation
Certified Farm Appraisals
Professional Farm Management

319.895.8858 | 102 Palisades Road | Mount Vernon, IA 52314-0050 | www.Hertz.ag

RYAN T. KAY, AFM, ALC
319.826.5715
RyanK@Hertz.ag

TROY LOUWAGIE, ALC
319.721.4068
TroyL@Hertz.ag