

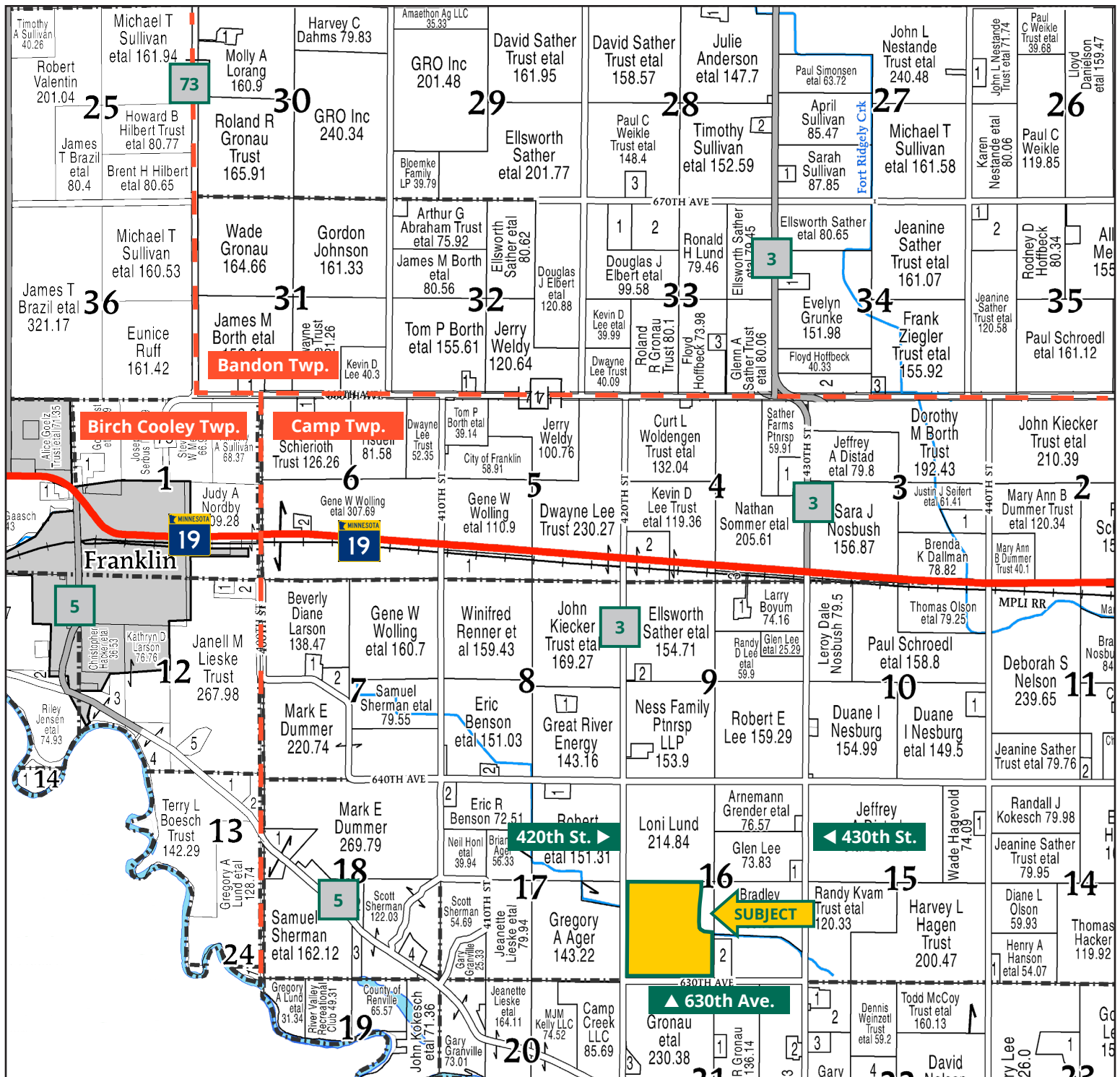
## Quality Renville County Land with Direct Tile Outlet



**JARED AUGUSTINE**  
*Licensed Salesperson  
in MN, IA & ND*  
**507.381.7425**  
JaredA@Hertz.ag

507.345.5263 | 151 Saint Andrews Ct., Ste. 1310  
Mankato, MN 56001 | [www.Hertz.ag](http://www.Hertz.ag)

**146.52 Acres, m/l  
Renville County, MN**



Map reproduced with permission of Farm & Home Publishers, Ltd.

507.345.5263 | 151 Saint Andrews Ct., Ste. 1310 | Mankato, MN 56001 | [www.Hertz.ag](http://www.Hertz.ag)

**JARED AUGUSTINE**  
**507.381.7425**  
 JaredA@Hertz.ag



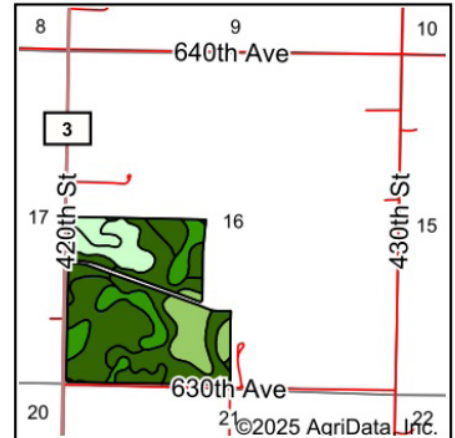
FSA/Eff. Crop Acres: 135.59 | Soil Productivity: 85.50 CPI



©NAIP/Minnesota Imagery: 2015



Soils data provided by USDA and NRCS.



State: **Minnesota**  
 County: **Renville**  
 Location: **16-112N-33W**  
 Township: **Camp**  
 Acres: **135.59**  
 Date: **9/4/2025**



Maps Provided By:  
  
 CUSTOMIZED ONLINE MAPPING  
 © AgriData, Inc. 2023 www.AgriDataInc.com



Area Symbol: MN129, Soil Area Version: 21

Code	Soil Description	Acres	Percent of field	PI Legend	Non-Irr Class *c	Productivity Index
887B	Clarion-Swanlake complex, 2 to 6 percent slopes	40.78	30.0%		Ile	92
336	Delft clay loam, 0 to 2 percent slopes	33.47	24.7%		IIw	94
1376C	Clarion-Storden complex, 6 to 10 percent slopes, moderately eroded	16.28	12.0%		IIIe	87
L13A	Klossner muck, 0 to 1 percent slopes	14.82	10.9%		IIlw	77
247	Linder loam, 0 to 2 percent slopes	12.99	9.6%		IIs	60
L83A	Webster clay loam, 0 to 2 percent slopes	5.40	4.0%		IIlw	93
27B	Dickinson loam, 2 to 6 percent slopes	5.05	3.7%		IIIe	60
978	Cordova-Rolfe complex, 0 to 2 percent slopes	3.74	2.8%		IIlw	86
1373C	Clarion-Storden-Pilot Grove complex, 6 to 10 percent slopes, moderately eroded	2.86	2.1%		IIIe	73
L85A	Nicollet clay loam, 1 to 3 percent slopes	0.10	0.1%		Iw	99
86	Canisteo clay loam, 0 to 2 percent slopes	0.10	0.1%		IIlw	93
Weighted Average					2.29	85.5



## Location

From Franklin: Go east on MN-19 for 2.7 miles and then south on 420th St. / Co. Hwy 3 for 1.8 miles. Property is located on the east side of the road.

## Simple Legal

SW¼, excluding 13.48 acres, m/l, all in Section 16, Township 112 North, Range 33 West of the 5th P.M., Renville Co., MN. *Final abstract/title documents to govern legal description.*

## Price & Terms

- \$1,423,695
- \$9,716.73/acre
- 10% down upon acceptance of offer, balance due in cash at closing.

## Possession

As negotiated.

## Real Estate Tax

Taxes Payable in 2025  
Ag Non-Hmstd Taxes: \$5,928.56  
Special Assessments: \$27.44  
Total Taxes Due: \$5,956.00  
Net Taxable Acres: 146.52  
Tax per Net Taxable Acre: \$40.65

## Lease Status

Leased through the 2025 crop year.

## FSA Data

Farm Number 9416, Tract 15257  
FSA/Eff. Crop Acres: 135.59  
Corn Base Acres: 59.18  
Corn PLC Yield: 167 Bu.  
Bean Base Acres: 53.83  
Bean PLC Yield: 47 Bu.  
Wheat Base Acres: 0.79  
Wheat PLC Yield: 40 Bu.  
*Brown County FSA office is currently the administrator of this farm. Contact agent for details.*

## NRCS Classification

NHEL: Non-Highly Erodible Land.  
PCNW: Prior Converted Non-Wetlands.

## Soil Types/Productivity

Main soil types are Clarion-Swanlake, Delft, and Clarion-Storden. Crop Productivity Index (CPI) on the FSA/Eff. crop acres is 85.50. See soil map for details.

## Land Description

Nearly level to gently sloping.

## Drainage

Natural with some tile. No tile maps available. Property is part of CD140.

## Buildings/Improvements

None.

## Water & Well Information

None.



The information gathered for this brochure is from sources deemed reliable, but cannot be guaranteed by Hertz Farm Management or its staff. All acres are considered more or less, unless otherwise stated. All property boundaries are approximate. Soil productivity ratings are based on the information currently available in the USDA/NRCS soil survey database. Those numbers are subject to change on an annual basis.



Northeast looking Southwest



Southwest looking Northeast







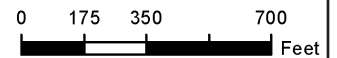
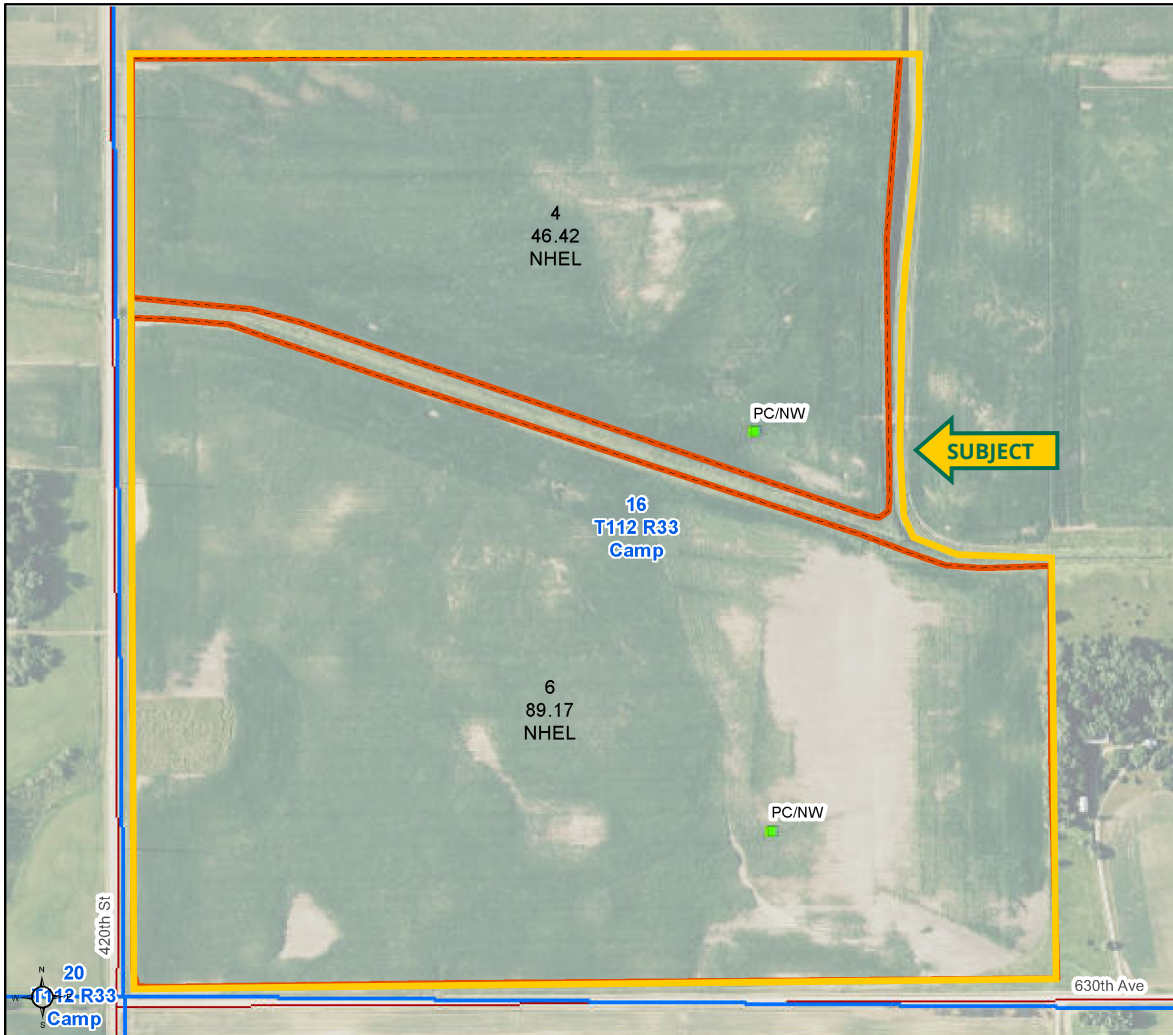
**Brown County, Minnesota**

**Farm 9416**

**Tract 15257**

**2025 Program Year**

Map Created May 06, 2025



Unless otherwise noted:  
 Shares are 100% operator  
 Crops are non-irrigated  
 Corn = yellow for grain  
 Soybeans = common soybeans for grain  
 Wheat = HRS, HRW = Grain  
 Sunflower = Oil, Non-Oil = Grain  
 Oats and Barley = Spring for grain  
 Rye = for grain  
 Peas = process  
 Alfalfa, Mixed Forage AGM, GMA, IGS = for forage  
 Beans = Dry Edible  
 NAG = for GZ  
 Canola = Spring for seed

### Common Land Unit

- Cropland
- Tract Boundary

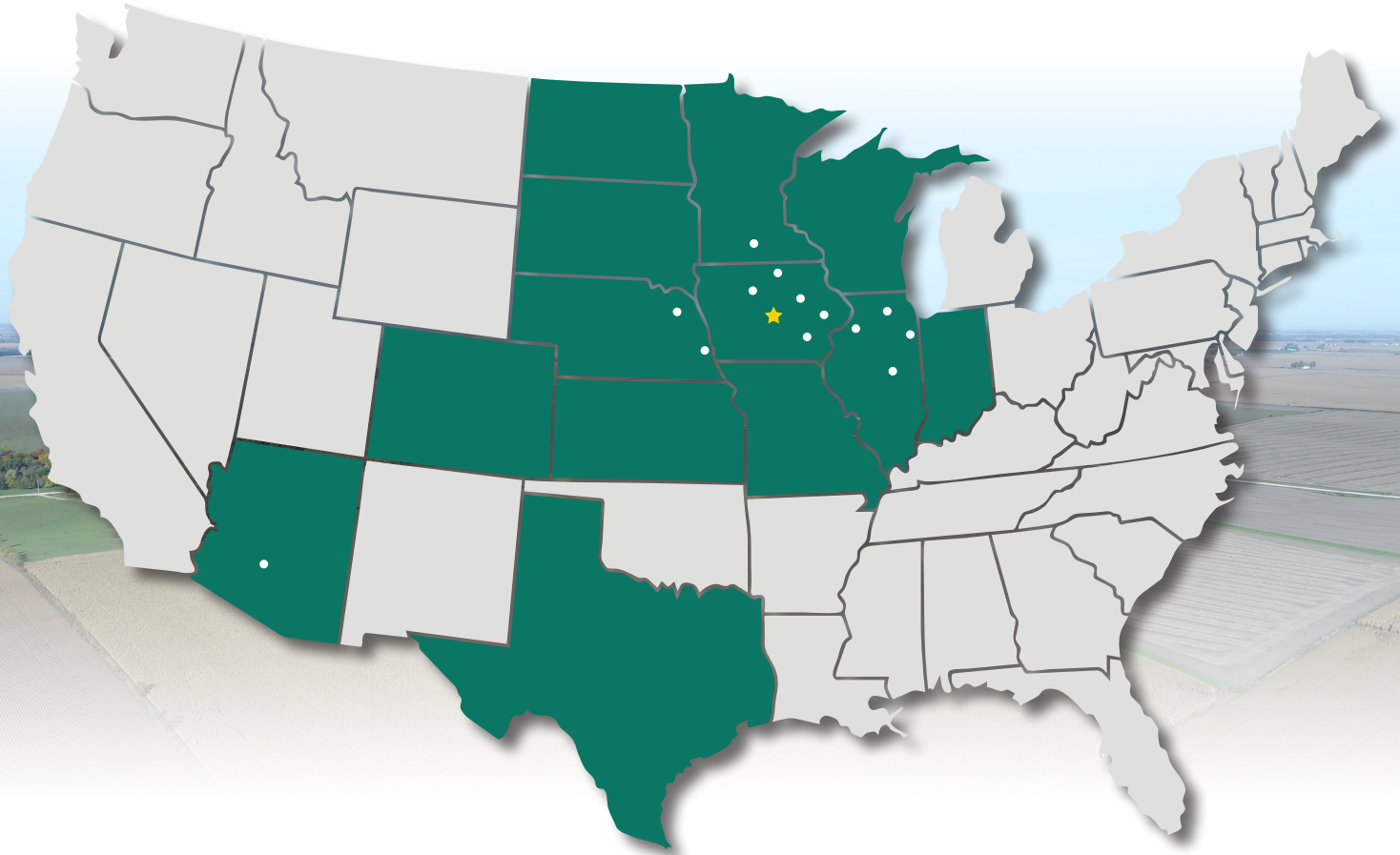
### Wetland Determination Identifiers

- Restricted Use
- ▼ Limited Restrictions
- Exempt from Conservation Compliance Provisions

Tract Cropland Total: 135.59 acres

United States Department of Agriculture (USDA) Farm Service Agency (FSA) maps are for FSA Program administration only. This map does not represent a legal survey or reflect actual ownership; rather it depicts the information provided directly from the producer and/or National Agricultural Imagery Program (NAIP) imagery. The producer accepts the data 'as is' and assumes all risks associated with its use. USDA/FSA assumes no responsibility for actual or consequential damage incurred as a result of any user's reliance on this data outside FSA Programs. Wetland identifiers do not represent the size, shape, or specific determination of the area. Refer to your original determination (CPA-026 and attached maps) for exact boundaries and determinations or contact USDA Natural Resources Conservation Service (NRCS). This map displays the 2023 NAIP imagery.

# MAKE THE MOST OF YOUR FARMLAND INVESTMENT



**Real Estate Sales and Auctions**  
**Professional Buyer Representation**  
**Certified Farm Appraisals**  
**Professional Farm Management**

507.345.5263 | 151 Saint Andrews Ct., Ste. 1310 | Mankato, MN 56001 | [www.Hertz.ag](http://www.Hertz.ag)

**JARED AUGUSTINE**  
**507.381.7425**  
JaredA@Hertz.ag