



Elizabeth A. Bjork Estate

AUCTION

Virtual-Online Only

Wednesday

September 24, 2025

10:00 a.m. CDT

bid.hertz.ag

77.30 Acres, m/l
Single Parcel
Henry County, IL



JOHN RAHN

Licensed Broker in IL

815.535.8399

JohnR@Hertz.ag

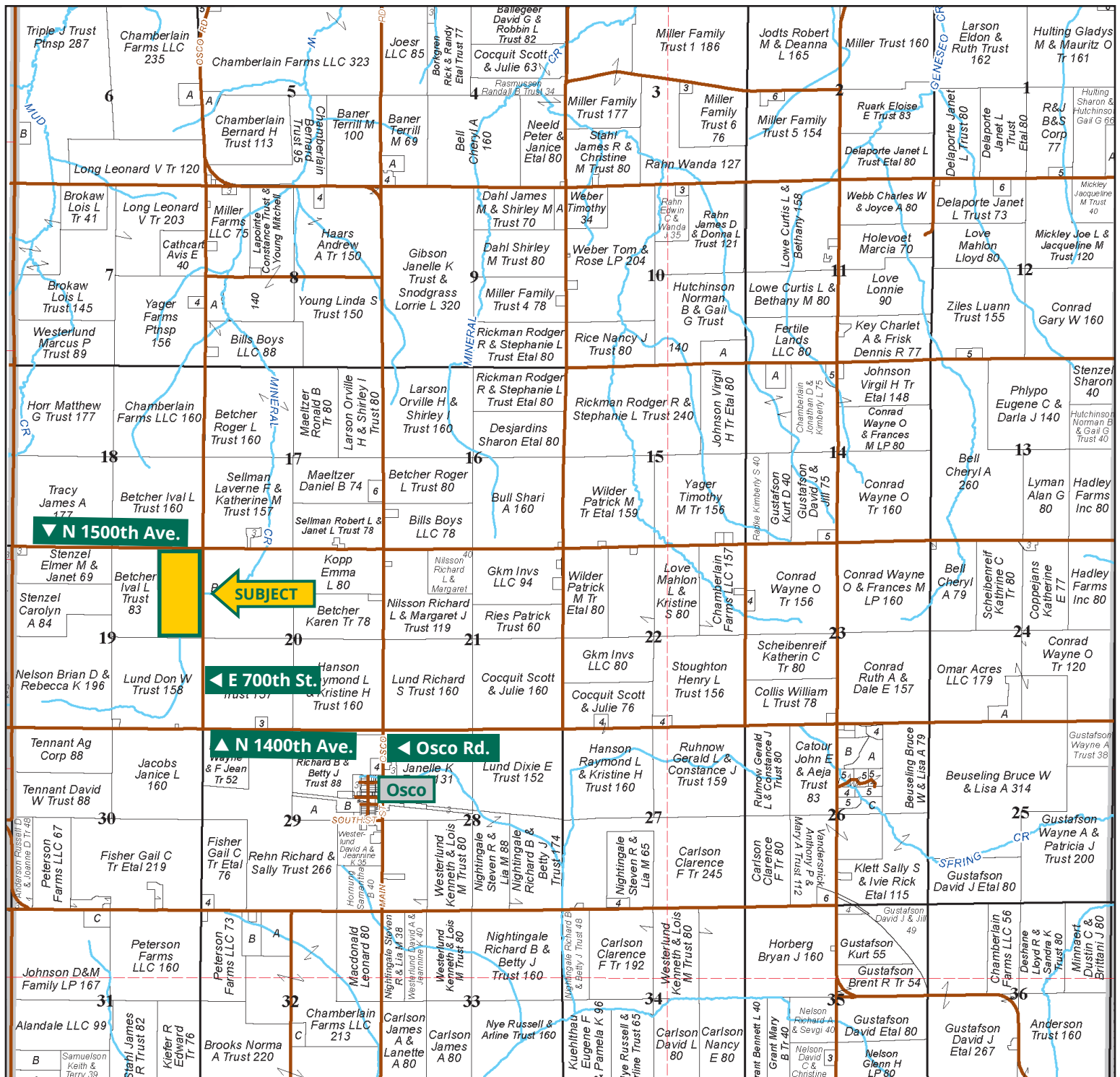


BRANDON YAKLICH, AFM

Licensed Broker in IL

309.883.9490

BrandonY@Hertz.ag



Map reproduced with permission of Rockford Map Publishers, Inc.

309.944.2184 | 613 East Ogden Ave., PO Box 9 | Geneseo, IL 61254-0009 | www.Hertz.ag

JOHN RAHN
815.535.8399
JohnR@Hertz.ag

BRANDON YAKLICH, AFM
309.883.9490
BrandonY@Hertz.ag

FSA/Eff. Crop Acres: 74.13 | Soil Productivity: 123.30 PI



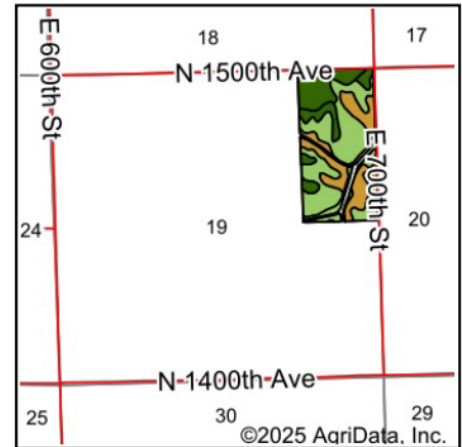
309.944.2184 | 613 East Ogden Ave., PO Box 9 | Geneseo, IL 61254-0009 | www.Hertz.ag

JOHN RAHN
815.535.8399
JohnR@Hertz.ag

BRANDON YAKLICH, AFM
309.883.9490
BrandonY@Hertz.ag



Soils data provided by USDA and NRCS.



State: **Illinois**
 County: **Henry**
 Location: **19-16N-2E**
 Township: **Oscos**
 Acres: **74.13**
 Date: **8/19/2025**



Maps Provided By:



Area Symbol: IL073, Soil Area Version: 22

Code	Soil Description	Acres	Percent of field	Il. State Productivity Index Legend	Crop productivity index for optimum management
**86C2	Oscos silt loam, 5 to 10 percent slopes, eroded	33.18	44.7%		**131
**19D3	Sylvan silty clay loam, 10 to 18 percent slopes, severely eroded	11.52	15.5%		**87
51A	Muscatine silt loam, 0 to 2 percent slopes	11.27	15.2%		147
**86B	Oscos silt loam, 2 to 5 percent slopes	7.25	9.8%		**138
**119D3	Elco silty clay loam, 10 to 18 percent slopes, severely eroded	5.82	7.9%		**88
**3074A	Radford silt loam, 0 to 2 percent slopes, frequently flooded	5.09	6.9%		**122
Weighted Average					123.3

Table: Optimum Crop Productivity Ratings for Illinois Soil EFOTG are sourced from Bulletin 811 calculated Map Unit Base Yield Indices, and adjusted (Adj) for slope, erosion, flooding, and surface texture. Publication Date: 01-28-2025

Crop yields and productivity (B811 EFOTG) are maintained at the following USDA web site: 2023 Illinois Soil Productivity and Yield Indices: <https://efotg.sc.egov.usda.gov/#/state/il/documents/section=2&folder=52809>

Location

From Osco: Go north on Osco Rd. for 0.4 miles, then west on N 1400th Ave. for 1 mile, and then north on E 700th St. for ½ mile. Property is located on the west side of the road.

Simple Legal

Part of the E½ of the NE¼ of Section 19, Township 16 North, Range 2 East of the 4th P.M., Henry Co., IL. *Final abstract/title documents to govern legal description.*

Real Estate Tax

2024 Taxes Payable 2025: \$3,082.40
Taxable Acres: 77.30
Tax per Taxable Acre: \$39.88

Lease Status

Open lease for the 2026 crop year.

FSA Data

Farm Number 5224, Tract 1486
FSA/Eff. Crop Acres: 74.13
Corn Base Acres: 54.90
Corn PLC Yield: 206 Bu.
Bean Base Acres: 14.50
Bean PLC Yield: 50 Bu.

Soil Types/Productivity

Main soil types are Osco, Sylvan, and Muscatune. Productivity Index (PI) on the FSA/Eff. crop acres is 123.30. See soil map for details.

Mineral Rights

All mineral rights owned by the Seller, if any, will be transferred to the Buyer(s).

Land Description

Nearly level to moderately sloping.

Drainage

Some tile. No tile maps available.

Buildings/Improvements

None.

Water & Well Information

None.



The information gathered for this brochure is from sources deemed reliable, but cannot be guaranteed by Hertz Real Estate Services or its staff. All acres are considered more or less, unless otherwise stated. All property boundaries are approximate. Soil productivity ratings are based on the information currently available in the USDA/NRCS soil survey database. Those numbers are subject to change on an annual basis.

309.944.2184 | 613 East Ogden Ave., PO Box 9 | Geneseo, IL 61254-0009 | www.Hertz.ag

JOHN RAHN
815.535.8399

JohnR@Hertz.ag

BRANDON YAKLICH, AFM
309.883.9490

BrandonY@Hertz.ag

Southwest looking Northeast



Southeast looking Northwest



Date: Wed., September 24, 2025

Time: 10:00 a.m.

Site: Virtual Live Auction
Online Only
bid.hertz.ag

Online Bidding Information

- To bid on these properties, you must be registered as an online bidder before the auction starts.
- We will be calling bids for this sale from a remote location and you will be able to view the auctioneer on-screen as they guide the process.
- To register, go to bid.hertz.ag from an internet browser. Do not use "www." when typing the website address. Navigate to auction you wish to register for and click on the VIEW AUCTION button.
- Follow on-screen prompts/buttons.
- Contact Sale Managers, John Rahn at 815-535-8399 or Brandon Yaklich at 309-883-9490 with questions.

Viewing Auction

To View Only on sale day, navigate to the auction via bid.hertz.ag (as above). Click on the "View Live" button. The auction is LIVE when the button is green.

Method of Sale

- Parcel will be offered as a single tract of land.
- Seller reserves the right to refuse any and all bids.

Seller

Elizabeth A. Bjork Estate

Agency

Hertz Real Estate Services and their representatives are Agents of the Seller.

Auctioneer

Eric Wilkinson
License No. 441.002361

Attorney

Steven Balk
Pepping, Balk, Kincaid & Olson Ltd.

Announcements

Information provided herein was obtained from sources deemed reliable, but the Auctioneer makes no guarantees as to its accuracy. Prospective bidders are urged to fully inspect the property and to rely on their own conclusions. Announcements made the day of the auction will take precedence over previously printed material and/or oral statements. Bidding increments are at the discretion of the Auctioneer. Acreage figures are based on information currently available, but are not guaranteed.

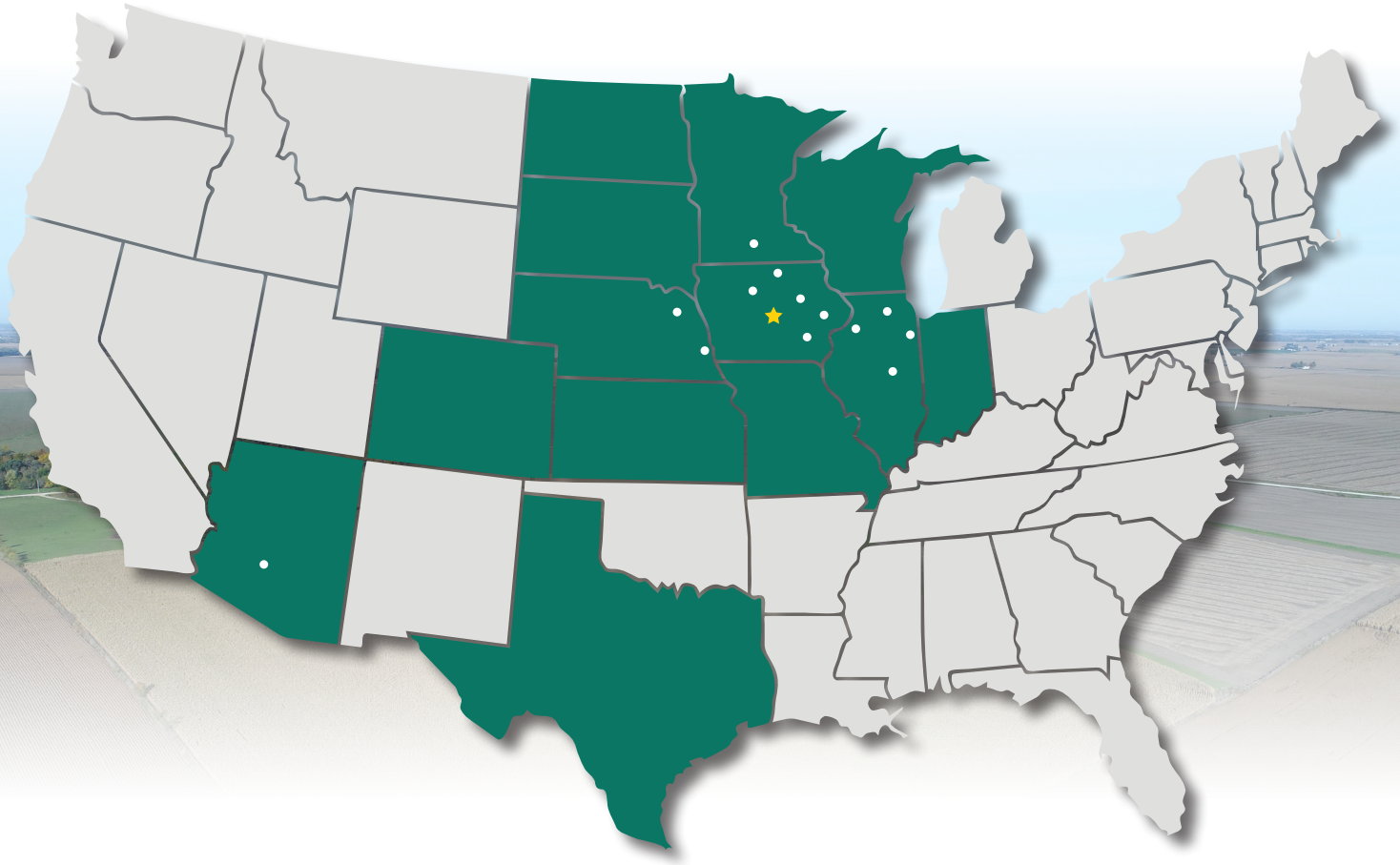
Terms of Possession

10% down payment required the day of sale. Successful bidders are purchasing with no financing contingencies and must be prepared for cash settlement of their purchase on or before October 24, 2025, or after any objections to title have been cleared. Final settlement will require certified check or wire transfer. Possession will be given at settlement subject to the existing lease which expires November 30, 2025. The Seller will credit the successful bidder at closing for the 2025 real estate taxes, payable in 2026.

Contract & Title

Immediately upon conclusion of the auction, the high bidder will enter into a real estate contract and deposit the required earnest money with the designated escrow agent. The Seller will provide an owner's title insurance policy in the amount of the contract price. If there are any escrow closing service fees, they will be shared by the Seller and Buyer.

MAKE THE MOST OF YOUR FARMLAND INVESTMENT



Real Estate Sales and Auctions
Professional Buyer Representation
Certified Farm Appraisals
Professional Farm Management

309.944.2184 | 613 East Ogden Ave., PO Box 9 | Geneseo, IL 61254-0009 | www.Hertz.ag

JOHN RAHN
815.535.8399
JohnR@Hertz.ag

BRANDON YAKLICH, AFM
309.883.9490
BrandonY@Hertz.ag